

UNC Charlotte Esports Lounge Renovation



Perkins&Will

**UNC Charlotte Popp Martin Student Union
Mezzanine Lounge Renovation**

**Pre-Bid Non-Mandatory Meeting
October 8th, 2024**

**Design & Construction
Facilities**



UNIVERSITY OF NORTH CAROLINA
CHARLOTTE

Agenda:

Welcome & Introductions

Project Overview & Scope

General Information & Logistics

Schedule Review

Open Discussion



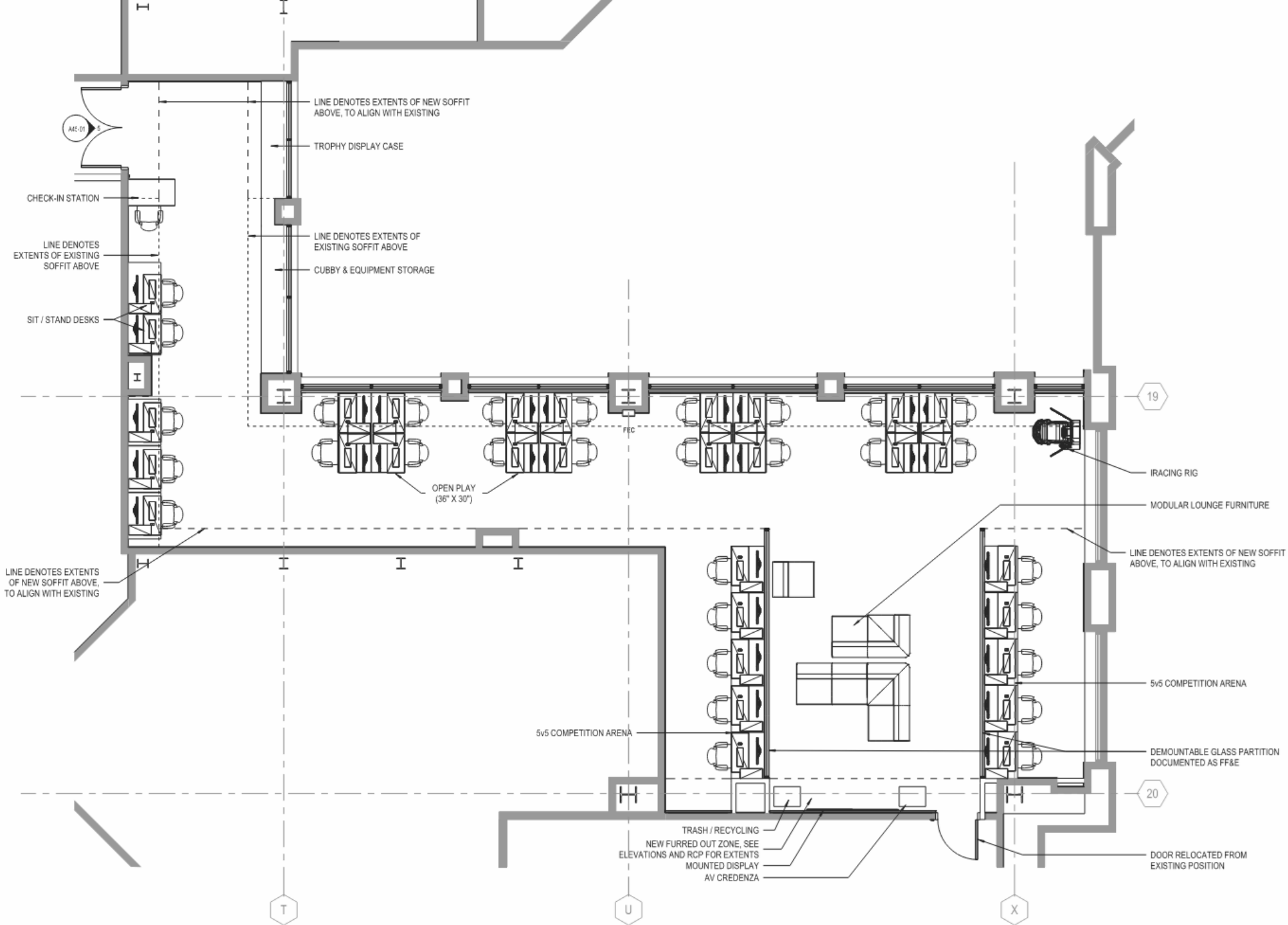
Overview

E-Sports Lounge Renovation, Interior View



Proposed Plan

32 Gaming Stations



Interior View, Entry



Interior View,
Open Play



Interior View, 5 v. 5 Stations



Interior View, Lounge



Interior View, Lounge



Shout Casting & Production



Room 041



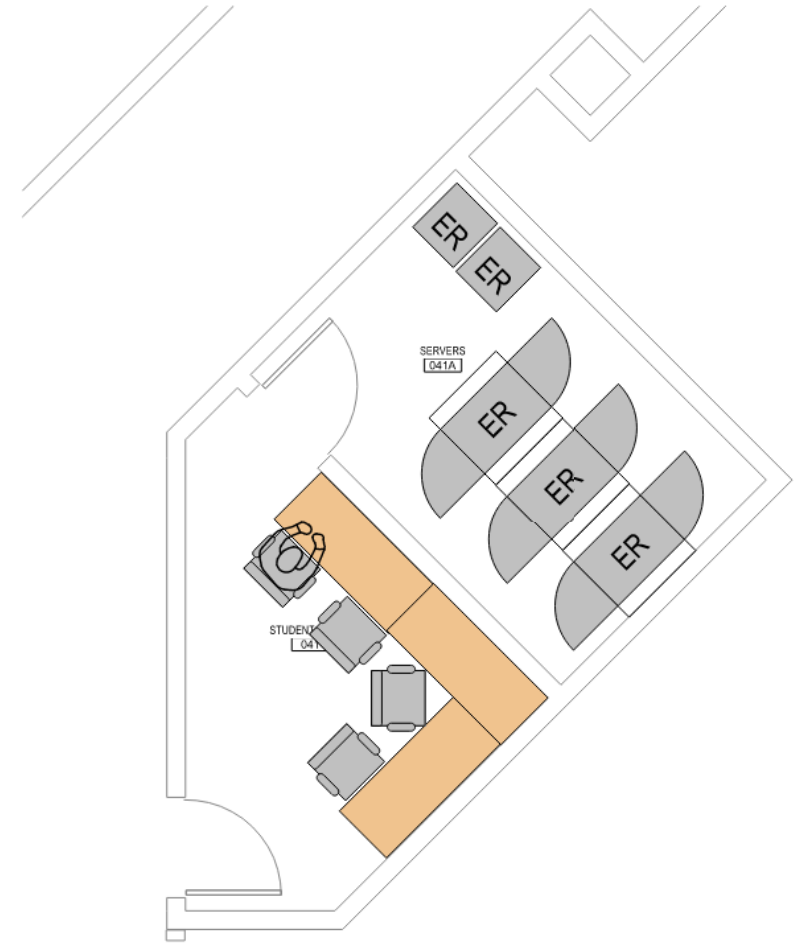
Room 041



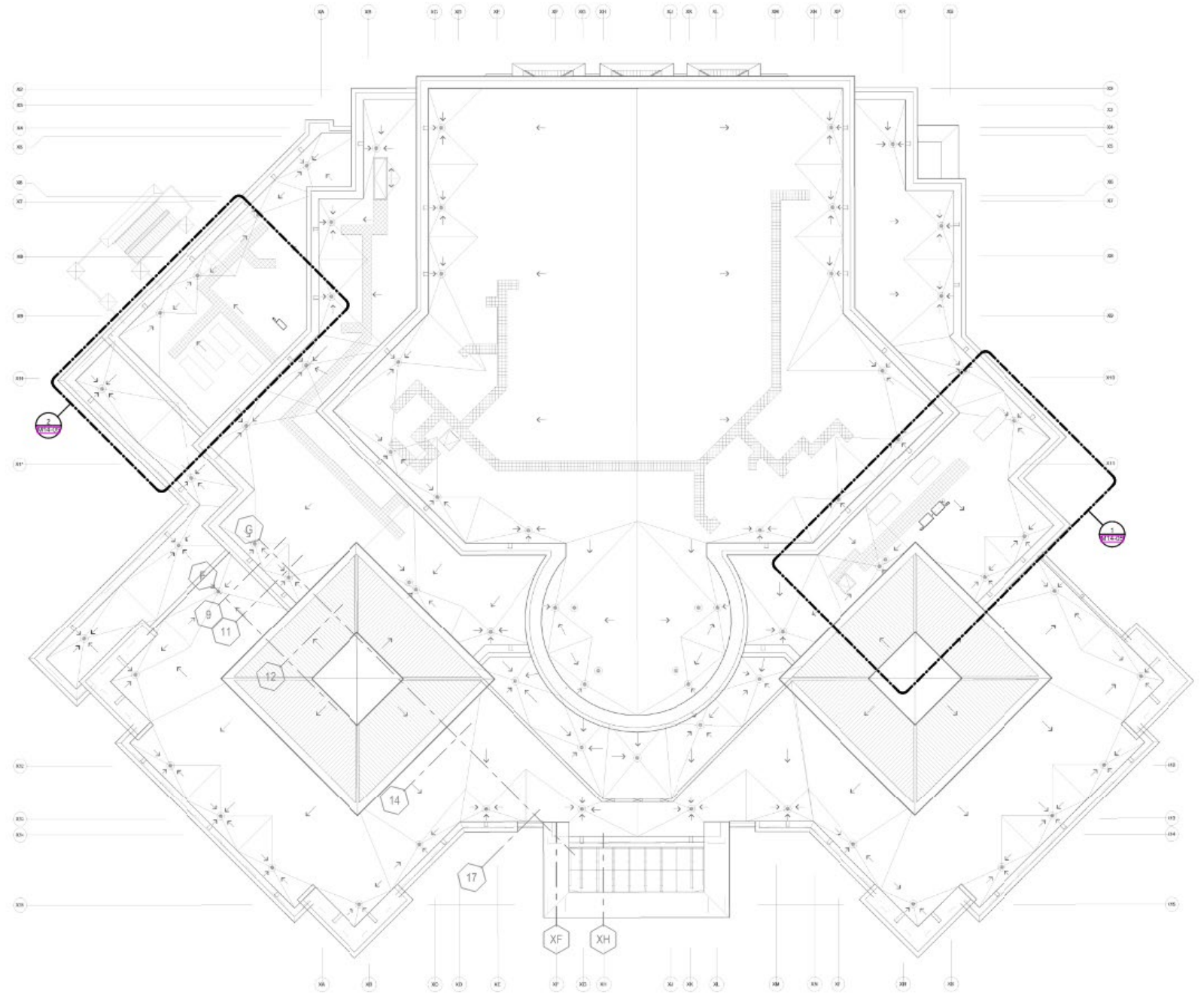
Room 041A



Room 041A



Roof plan

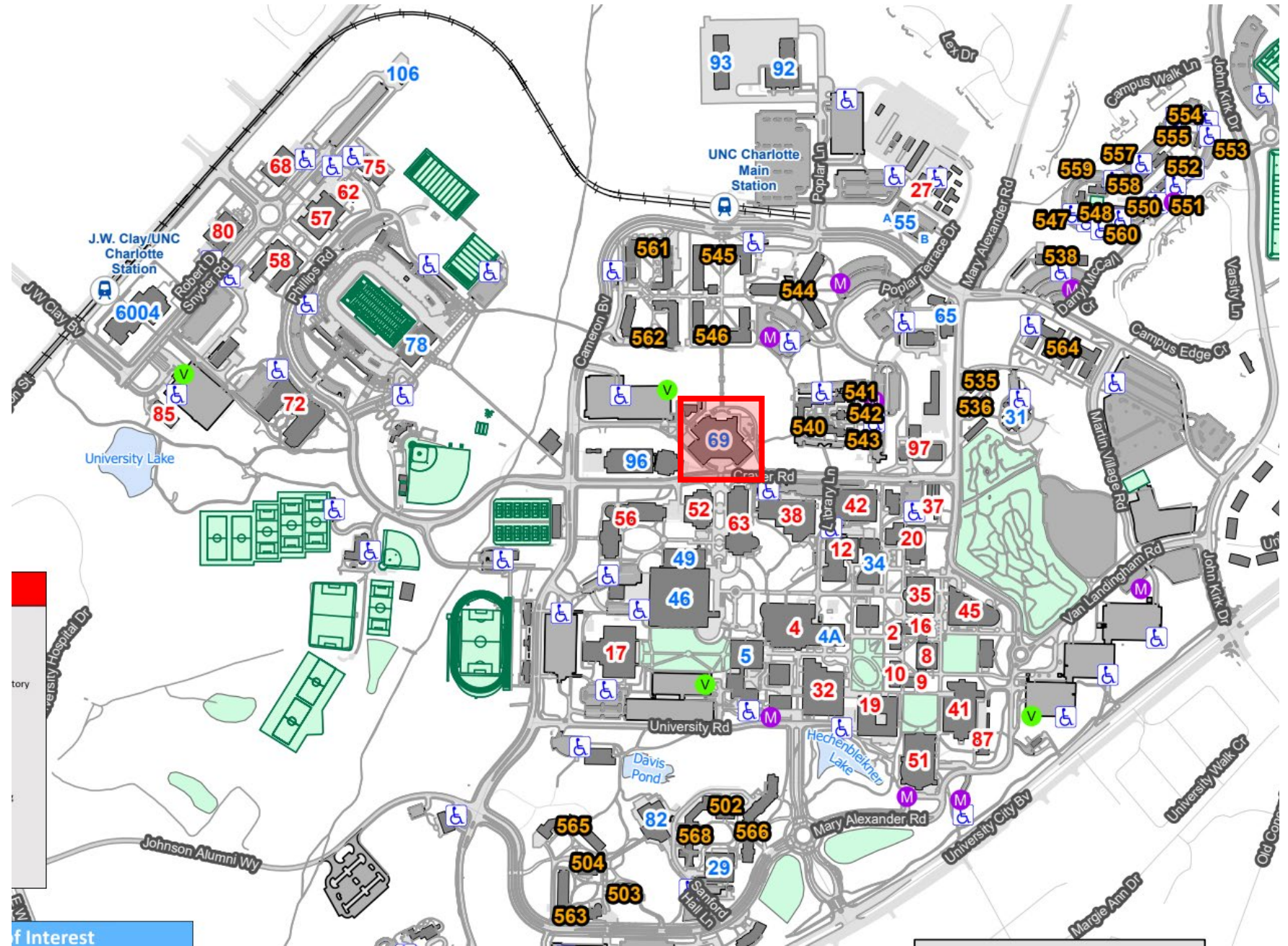


Site Access & Logistics

Project Location

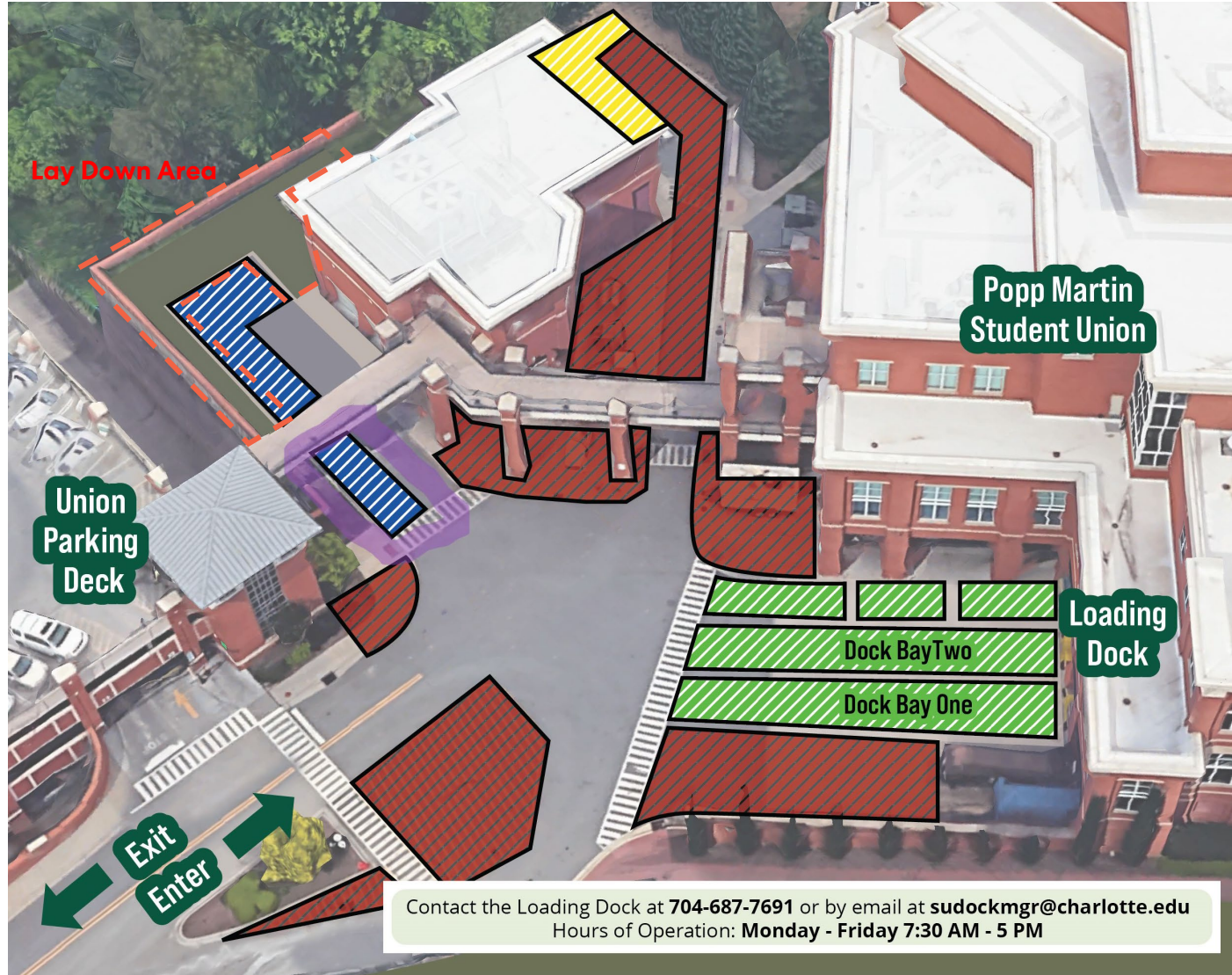


Popp Martin Student Union



Loading Area & Logistics

1. GC will be required to protect walls and floor of Student Union and Loading Zone.



ALL PERSONS must check in and receive a hang tag from Loading Dock staff.



Staff Parking :

- Staff from the Student Union, Cone University Center, or other departments within the Student Affairs Division driving University vehicles (Vans, GEM carts or etc). Vehicles must have University Credentials
- Max parking time: 1-2 hours depending on purpose



Vendor/Contractor Parking :

- Facilities Management and Shops
- Contractors/vendors that are not part of campus Facilities Management or Shops but are doing work in the Student Union
- Staff overflow if staff parking is full
- Max parking time: 4 hours
- If a vendor/contractor is staying longer or for multiple days, they should contact PATS about a campus parking pass or park in the deck. Vendor/contractor parking should be coordinated by the department contracting the work



Loading/Unloading Parking :

- Standard loading/unloading vehicles
- Max parking time: 30 minutes
- Must be loading/unloading within the Student Union for a work related activity. Parking is not permitted for personal visits or activities



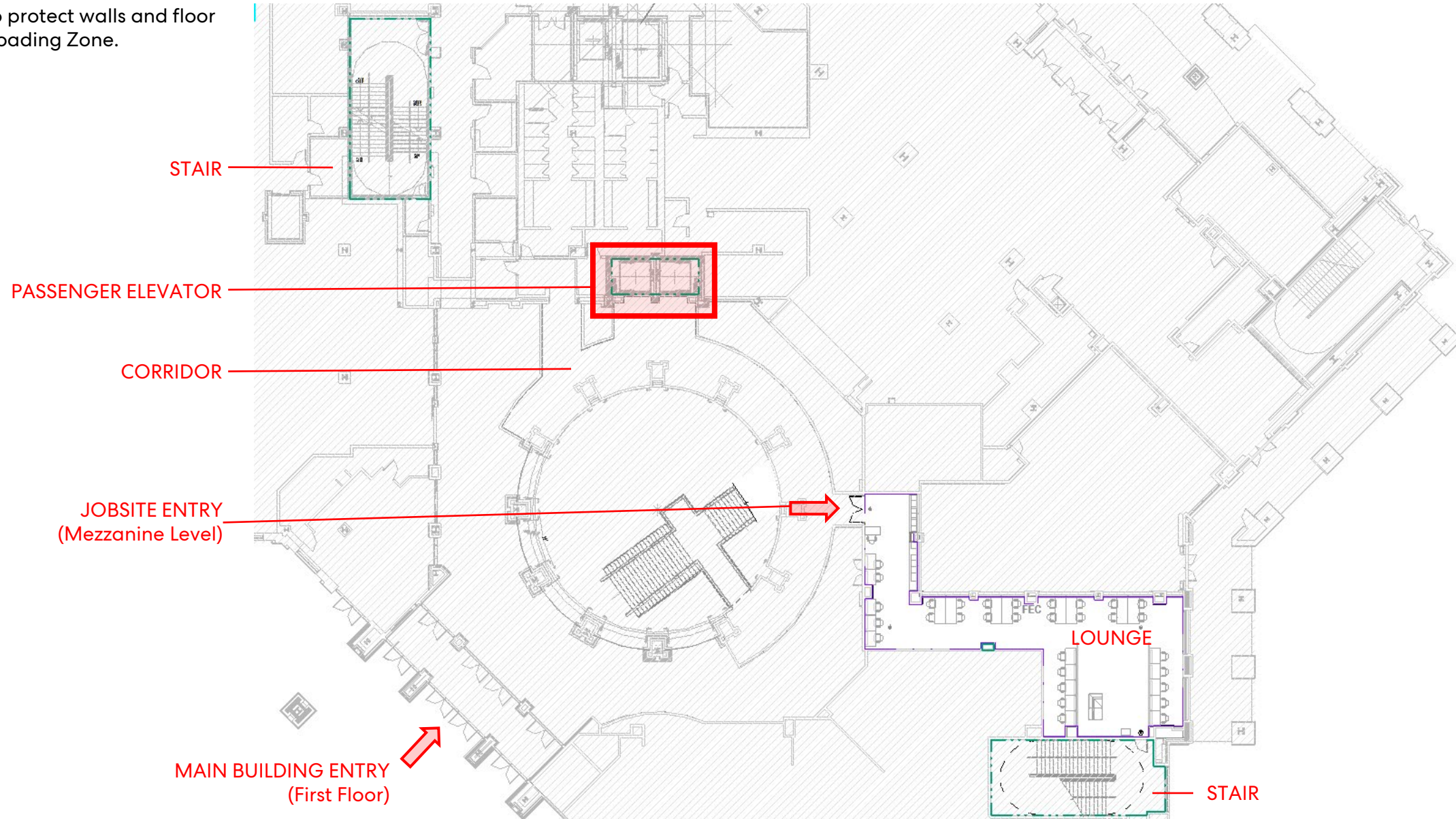
No Parking

NOTE: Unauthorized vehicles are subject to UNC Charlotte Parking fines and tickets.

Contact the Loading Dock at **704-687-7691** or by email at sudockmgr@charlotte.edu
Hours of Operation: **Monday - Friday 7:30 AM - 5 PM**

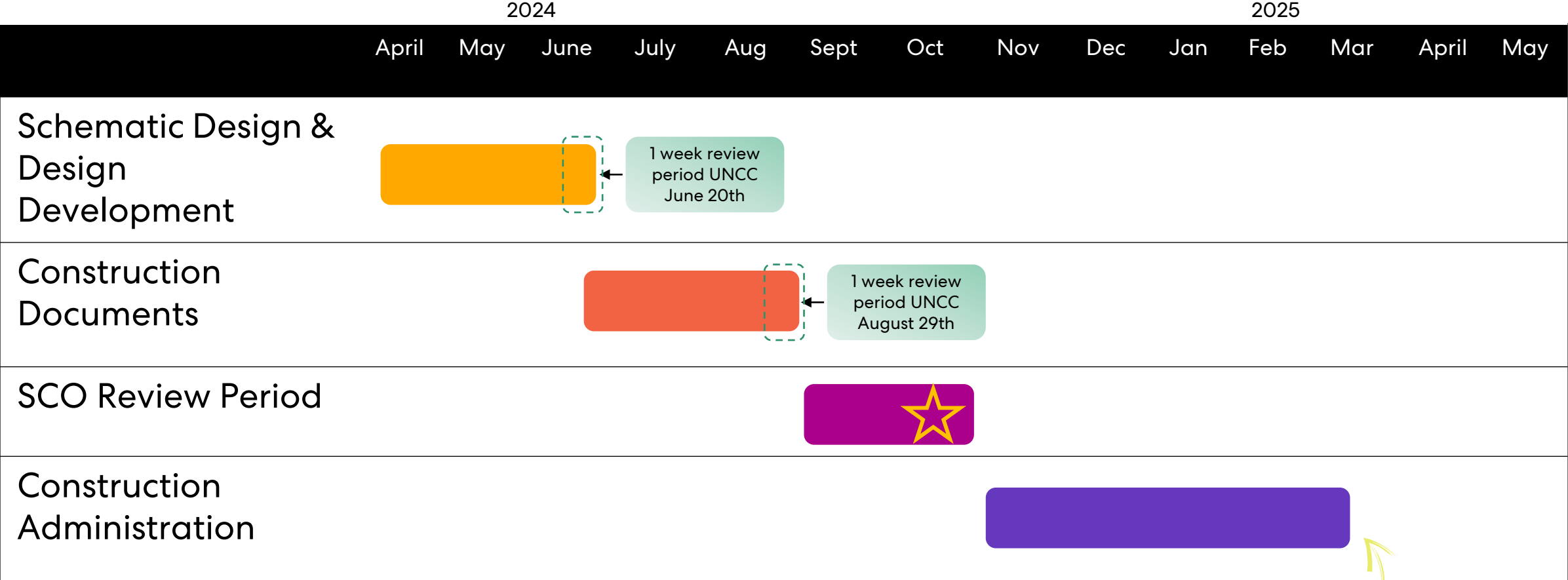
Areas of Access to be confirmed with Owner

1. GC will be required to protect walls and floor of Student Union and Loading Zone.



Schedule

Proposed Project Schedule



Construction Start: Nov 2024
 Construction End: Feb 2025
 Move In: Mar 2025
 Occupancy: April 1 2025

Thank You!