



SMITH COMPREHENSIVE RENOVATION | ADVANCE PLANNING

Request for Qualifications – Preproposal Meeting - September 17, 2024

PRE-SUBMITTAL MEETING

PART I: GENERAL INFORMATION

PART II: PROJECT OVERVIEW

PART III: SUBMITTAL REQUIREMENTS

PART IV: QUESTIONS

GENERAL INFORMATION

WELCOME

SIGN-IN

QUESTIONS

Cheryl Walker

OFFICE PHONE: 704-687-0509

EMAIL: cwalk118@charlotte.edu

UPDATES

<https://facilities.charlotte.edu/vendor-information/advertisements/>

SUBMITTAL

SCHEDULE

- QUESTION PERIOD ENDS: September 27, 2024
- RESPONSES POSTED: October 3, 2024
- SUBMITTAL DUE: **October 9, 2024 - 2:00 PM**
- SHORTLISTING COMPLETE: October 22, 2024
- INTERVIEWS SCHEDULED: Mid-November 2024
- ADVANCE PLANNING NTP: December 2024

* WE HAVE THE OPTION TO RETAIN SELECTED FIRM FOR FULL DESIGN SERVICES AFTER COMPLETION OF ADVANCE PLANNING

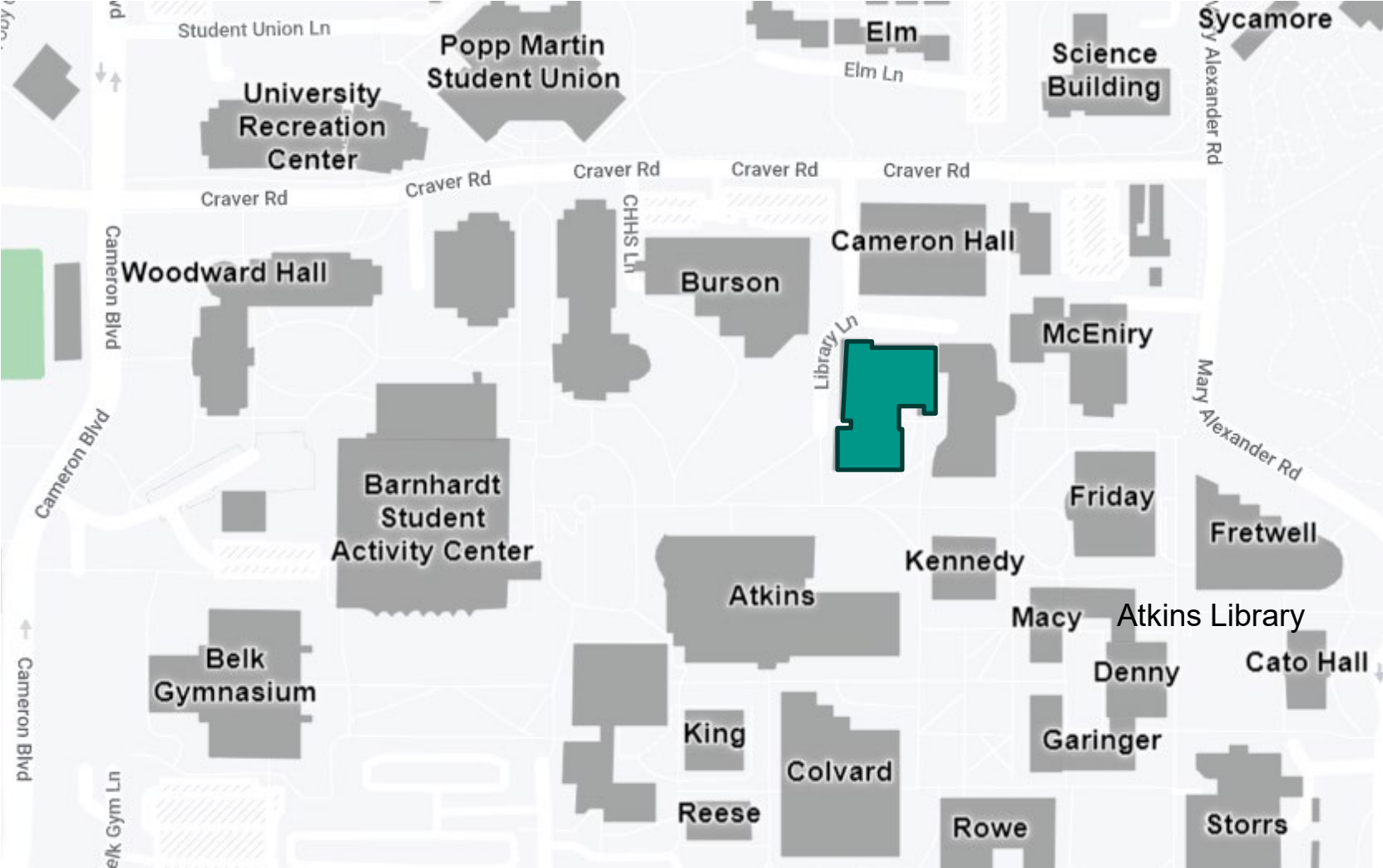
PROJECT OVERVIEW

SCOPE

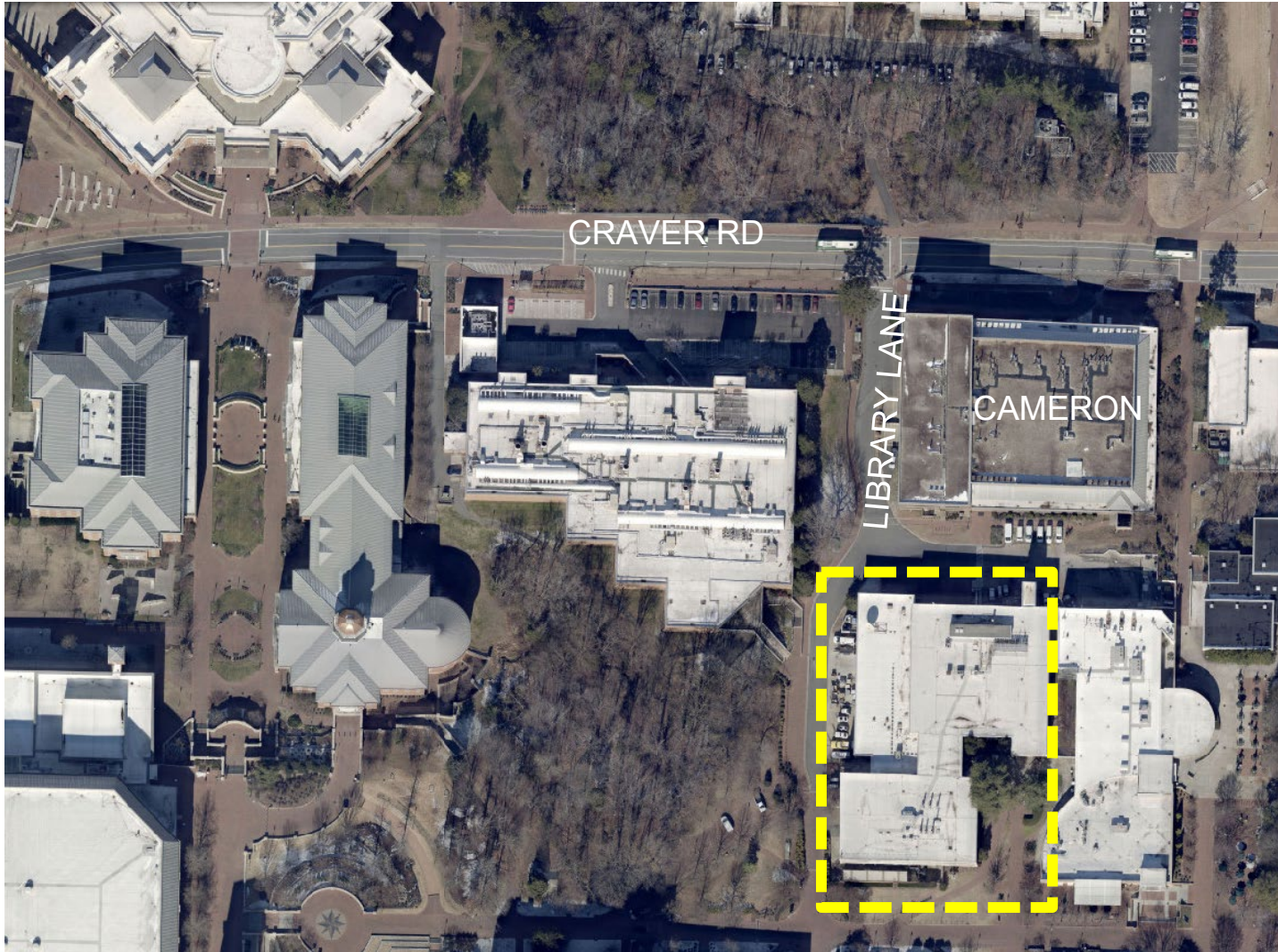
PROJECT: Smith Comprehensive Renovation – Advance Planning

- 1) TO SUPPORT GROWTH OF COLLEGE OF ENGINEERING TECHNOLOGY & CONSTRUCTION MANAGEMENT AND COMMON FIRST YEAR ENGINEERING PROGRAMS
- 2) PROJECT-BASED ENGINEERING LABS, ACTIVE LEARNING CLASSROOMS, COLLABORATION SPACE, RESEARCH LABS, AND FACULTY AND ADMINISTRATIVE OFFICE SPACE
- 3) UPGRADE MEP/FIRE PROTECTION SYSTEMS
- 4) ADDRESS BUILDING CODE AND ADA DEFICIENCIES
- 5) ADDRESS BUILDING ENVELOPE DEFICIENCIES AND ROOF REPLACEMENT

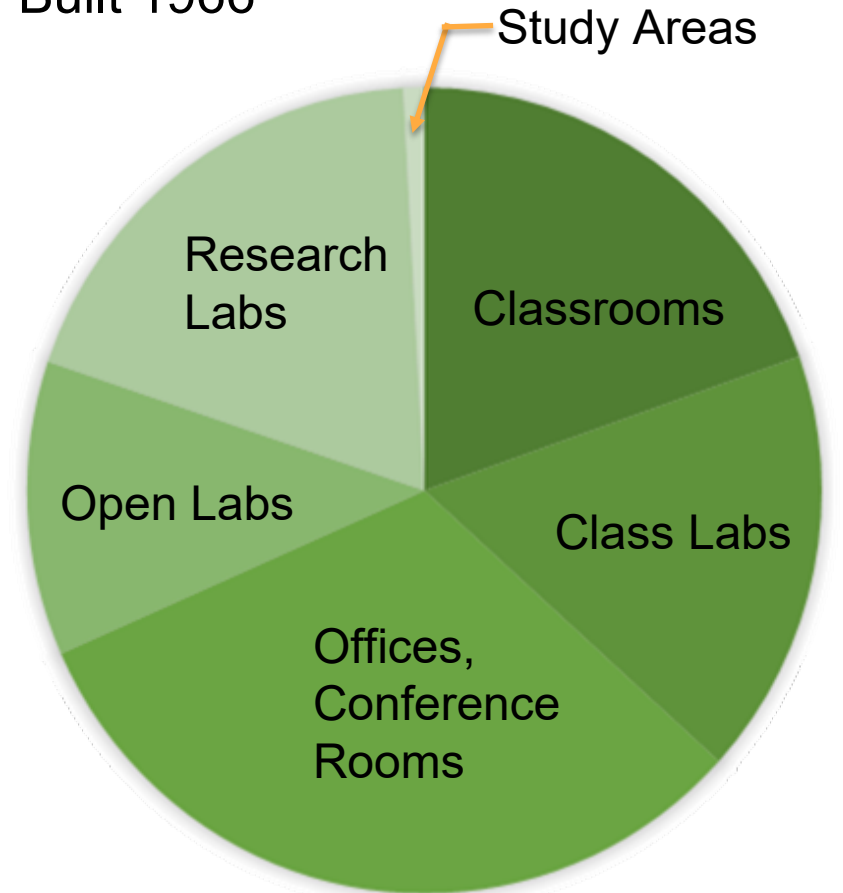
CAMPUS PLAN | SITE PLAN



CAMPUS PLAN | SITE PLAN



92,512 gross square feet
58,267 assignable square feet
Built 1966



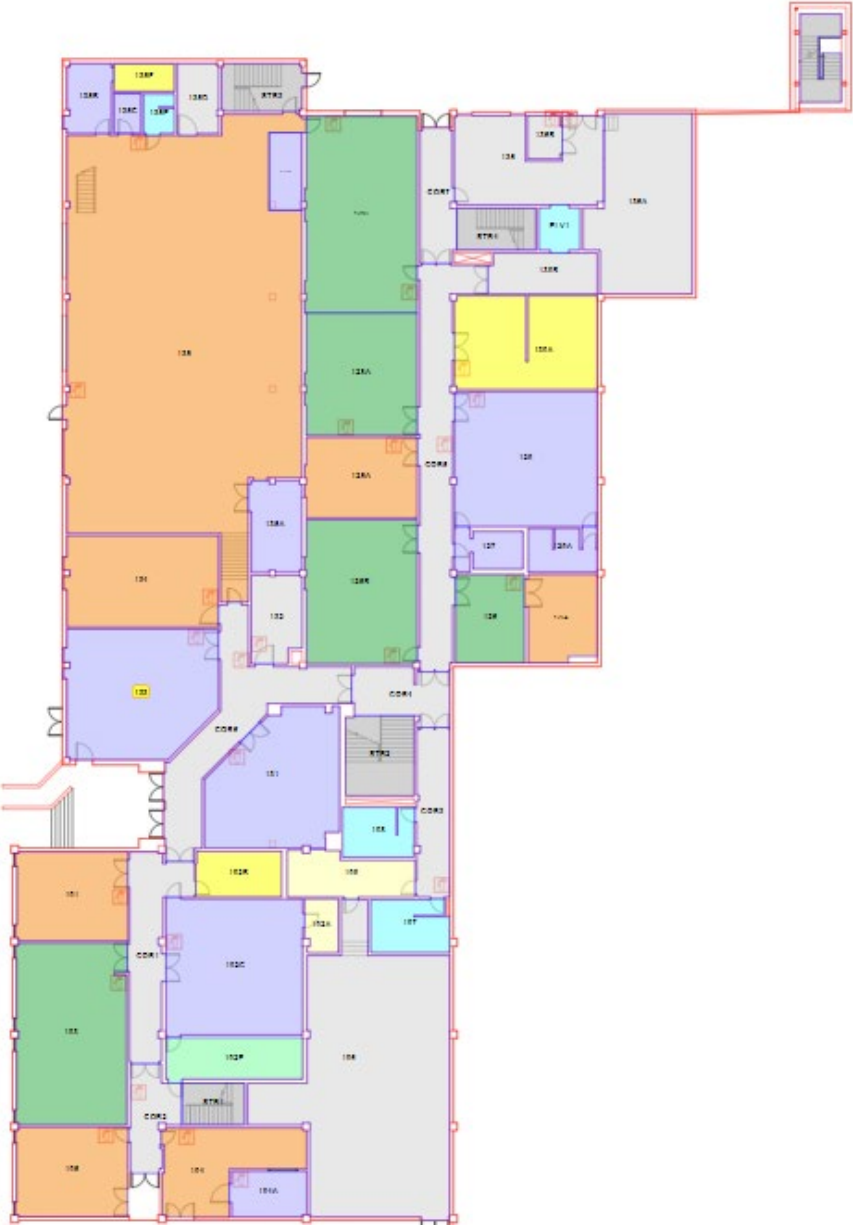
TEACHING SPACES



FLOOR PLAN - 1

- Offices/Admin
- Class Labs
- Open Labs
- Research Labs
- Restrooms/Elevators
- Circulation

92,512 TOTAL SF








FLOOR PLAN - 2

- Offices/Admin
- Class Labs
- Open Labs
- Research Labs
- Restrooms/Elevators
- Circulation

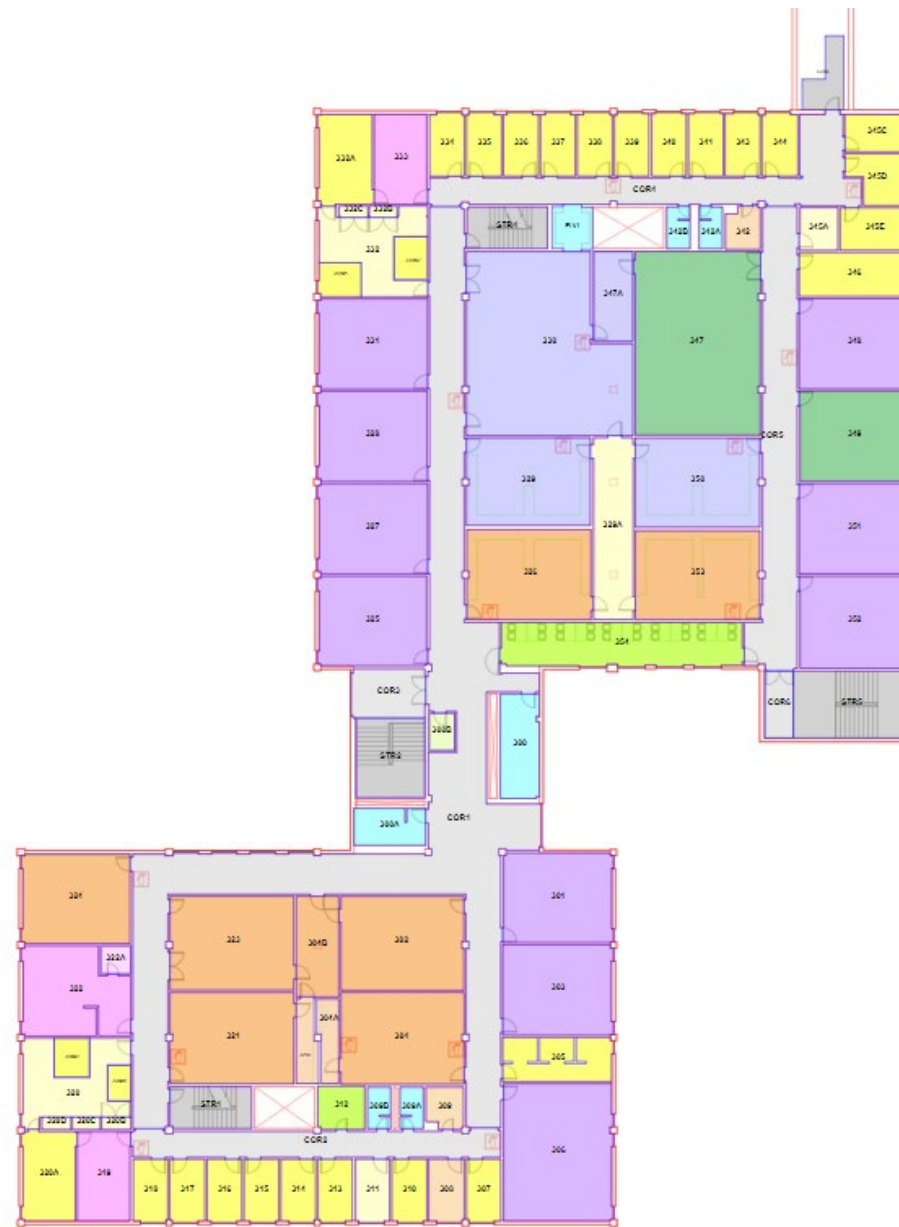
92,512 TOTAL SF



FLOOR PLAN - 3

-  Offices/Admin
-  Class Labs
-  Open Labs
-  Research Labs
-  Restrooms/Elevators
-  Circulation

92,512 TOTAL SF



PROJECT OVERVIEW

BUDGET

TOTAL BUDGET IS **\$41,950,000** WHICH INCLUDES

- (1) DESIGN FEES
- (2) FURNISHINGS (FUNITURE, AV & FIXED EQUIPMENT)
- (3) IT INFRASTRUCTURE
- (4) CONSTRUCTION
- (5) COMMISSIONING
- (6) ANY OFF-SITE UTILITY INFRASTRUCTURE IMPROVEMENTS

SUBMITTAL

SELECTION CRITERIA

NC ADMINISTRATIVE CODE (01 NCAC 30d.0303)

SUBMITTALS MUST CLEARLY PROVIDE INFORMATION FOR TEN CATEGORIES

- (1) SPECIALIZED OR APPROPRIATE EXPERTISE IN THIS TYPE OF PROJECT
- (2) PAST PERFORMANCE ON SIMILAR PROJECTS
- (3) ADEQUATE STAFF AND PROPOSED DESIGN OR CONSULTANT TEAM FOR THE PROJECT
- (4) CURRENT WORKLOAD AND STATE PROJECTS AWARDED
- (5) PROPOSED DESIGN APPROACH FOR THE PROJECT INCLUDING DESIGN TEAMS AND CONSULTANTS
- (6) RECENT EXPERIENCE WITH PROJECT COSTS AND SCHEDULES
- (7) CONSTRUCTION ADMINISTRATION CAPABILITIES
- (8) PROXIMITY TO AND FAMILIARITY WITH THE AREA WHERE PROJECT IS LOCATED
- (9) RECORD OF SUCCESSFULLY COMPLETED PROJECTS WITHOUT MAJOR LEGAL OR TECHNICAL PROBLEMS
- (10) OTHER FACTORS THAT MAY BE APPROPRIATE TO THE PROJECT

*** FIRMS MUST INDICATE STAFF, LEAD PROJECT MANAGER, AND TEAM FOR ADVANCE PLANNING**

SUBMITTAL

FORMAT REQUIREMENTS

PAPER SIZE: 12 ½ INCHES X 9 ½ INCHES MAXIMUM

COPIES: 1 HARDCOPY AND 1 DIGITAL COPY (USB DRIVE)

PAGE LIMIT: 50 PAGES SINGLE SIDED (25 PAGES DOUBLE SIDED)

- INCLUDES ALL PRINTED PAGES (EXCLUDES COVERS, TABS, CLEAR COVERS, BLANK PAGES, CARDSTOCK BACKS)

PAGE COUNT IS DERIVED FROM DIGITAL COPY

- OMIT ALL BLANK PAGES FROM DIGITAL VERSION

SUBMITTAL

ORGANIZATION

UNC CHARLOTTE COVER SHEET

SUPPLEMENTAL STAFFING INFORMATION

OPTIONAL COVER LETTER

SF330 PART I & II

* PLEASE USE **BOLD FONTS** FOR ALL PROJECT COSTS

SUPPLEMENTAL INFORMATION



SMITH COMPREHENSIVE RENOVATION | ADVANCE PLANNING

Request for Qualifications – Preproposal Meeting - September 17, 2024