

# RESIDENCE HALL PHASE XVI

The University of North Carolina at Charlotte

**CMR PRE-SUBMITTAL CONFERENCE 11.29.2017**



UNC CHARLOTTE

# **M E E T I N G   A G E N D A**

**PART I:   GENERAL INFORMATION**

**PART II:   SUBMITTAL REQUIREMENTS**

**PART III:   PROJECT OVERVIEW**

**PART IV:   QUESTIONS**

**CMR PRE-SUBMITTAL CONFERENCE   11.29.2017**

---



**UNC CHARLOTTE**

# GENERAL

- WELCOME
- INTRODUCTIONS
- **QUESTIONS:** ELIZABETH FRERE  
PHONE: 704-687-0558  
EMAIL: [EFRERE@UNCC.EDU](mailto:EFRERE@UNCC.EDU)
- **UPDATES & ADDENDA:**  
[HTTP://FACILITIES.UNCC.EDU/ADVERTISEMENTS](http://FACILITIES.UNCC.EDU/ADVERTISEMENTS)
  - PRESENTATION WILL BE POSTED AT ABOVE LINK
  - LAST DATE TO SUBMIT QUESTIONS DECEMBER 6TH
  - FINAL ADDENDA DECEMBER 8TH



# S U B M I T T A L

## SCHEDULE

- PROPOSAL DUE DATE: 2:00PM DECEMBER 14<sup>TH</sup>
- SHORTLISTING TO BE COMPLETED EARLY JANUARY 2018
- INTERVIEWS WITH SELECTED FIRMS MID-JANUARY 2018
- FINAL SELECTION ANTICIPATED BY LATE JANUARY
- PRE-CRONSSTRUCTION SERVICES TO BEGIN JANUARY 2018



# S U B M I T T A L

## FORMAT

- NO LARGER THAN 12 ½" HEIGHT X 9 ½" WIDTH
  - PROVIDE FIVE (5) PRINTED COPIES & ONE (1) DIGITAL
  - 50 PAGE LIMIT (OR 25 DOUBLE SIDED PAGES)
    - DOES NOT INCLUDE: COVERS, TABS, BLANK PAGES, CARDSTOCK BACKS, ETC.
  - PAGE COUNT DERIVED FROM DIGITAL COPY, SO OMIT ALL BLANK PAGES FROM DIGITAL VERSION
  - SF 330 IS REQUIRED FOR PORTIONS OF THE SUBMITTAL. **DOWNLOAD FORM AT:**  
[HTTP://WWW.GSA.GOV/PORTAL/FORMS/DOWNLOAD/116486](http://www.gsa.gov/portal/forms/download/116486)
-

# **S U B M I T T A L**

## **ORGANIZATION**

### **I. OPTIONAL COVER LETTER**

### **II. TABLE OF CONTENTS**

### **III. QUALIFICATIONS QUESTIONNAIRE**

- ✓ PROJECT TITLE
- ✓ PROPOSER NAME
- ✓ PROFILE OF PROPOSER
- ✓ PROJECT EXPERIENCE
- ✓ ATTACHMENTS



# **S U B M I T T A L**

## **QUALIFICATIONS QUESTIONNAIRE**

- **PROJECT TITLE**
  - **PROPOSER NAME**
  - **PROFILE OF PROPOSER**
  - **PROJECT EXPERIENCE**
    - LIST AT LEAST 3 AND UP TO 10 PROJECTS OF SIMILAR SIZE AND COMPLEXITY
    - USE SF 330 PART I, SECTION F, SUB-SECTIONS 20-24 (OMIT SUB-SECTION 25). SEPARATE SECTION F FOR EACH PROJECT.
    - PROVIDE REQUESTED INFORMATION FOR ITEMS B-D IN SF 330 PART I, SECTION F, SUB-SECTION 24 (INCLUDE AT LEAST ONE PHOTO PER PROJECT)
    - PROVIDE ONE SF 330 PART I, SECTION G FORM, WITH SUB-SECTIONS 26-29
-

# **S U B M I T T A L**

## **QUALIFICATIONS QUESTIONNAIRE**

- **KEY PERSONNEL**

- PROVIDE INFORMATION REQUIRED IN ITEMS A-D
- USE SF 330 PART I, SECTION E TO PROVIDE RESUMES AND REFERENCE INFORMATION. INCLUDE SEPARATE SECTION E FORM FOR EACH RESUME (INCLUDE RESUMES IN ATTACHMENT D OF SUBMITTAL).
- FOR ITEM E PROVIDE ORGANIZATIONAL CHART (INCLUDE IN ATTACHMENT E OF SUBMITTAL)

- **PROJECT PLANNING**

- PROVIDE INFORMATION REQUIRED IN ITEMS A-B

- **ATTEST QUESTIONNAIRE**

- **VERIFICATION FORM**





# **S U B M I T T A L**

## **QUALIFICATIONS QUESTIONNAIRE**

- **PROVIDE ATTACHMENTS IN THIS ORDER:**

- **ATTACHMENT A: COPY OF STATE OF NC CONTRACTOR'S LICENSE**
  - **ATTACHMENT B: LETTER FROM SURETY COMPANY**
  - **ATTACHMENT C: SWORN STATEMENT (LISTED PERSONNEL WILL BE EXCLUSIVELY ASSIGNED TO THIS PROJECT FOR THE DURATION)**
  - **ATTACHMENT D: RESUMES (USE SF 330 PART I, SECTION E)**
  - **ATTACHMENT E: ORGANIZATIONAL CHART**
  - **FINANCIALS (BALANCE SHEET AND INCOME STATEMENT IF AVAILABLE) **TO BE SUBMITTED SEPARATELY IN A SEALED ENVELOPE AS A SINGLE COPY. WILL NOT COUNT TOWARDS THE 50 PAGES!****
-

# C M R

## REQUIREMENTS

### SUB-CONTRACTOR PRE-QUALIFICATION

- NC STATE PRE-QUALIFICATION PROCEDURES AND FORMS CAN BE FOUND AT:  
[HTTPS://NCADMIN.NC.GOV/BUSINESSES/CONSTRUCTION/FORMS-DOCUMENTS](https://ncadmin.nc.gov/businesses/construction/forms-documents)
- APPEALS PROCEDURE REQUIRES PRE-QUALIFICATION TO BE MOVED FARTHER AHEAD IN THE SCHEDULE (TO ALLOW ADEQUATE TIME FOR APPEALS PRIOR TO BIDDING)

### HUB PARTICIPATION

- GOAL FOR THIS PROJECT IS 30%



# PROJECT OVERVIEW

## PROGRAM

### BUDGET

- TOTAL BUDGET IS \$55.4M (INCLUDES DESIGN SUPPORT SERVICES FOR DEMO & ABATEMENT, DESIGN FEES, FURNISHINGS, LANDSCAPING, CONSTRUCTION, AND ANY OFF-SITE UTILITY INFRASTRUCTURE)
- CONSTRUCTION BUDGET IS \$45M – NOT TO EXCEED AT EACH PHASE

### SIZE

- 750-800 TOTAL BEDS
- 5-6 FLOORS (PER BUILDING)
- PROJECT WILL CONNECT TO RUP 4



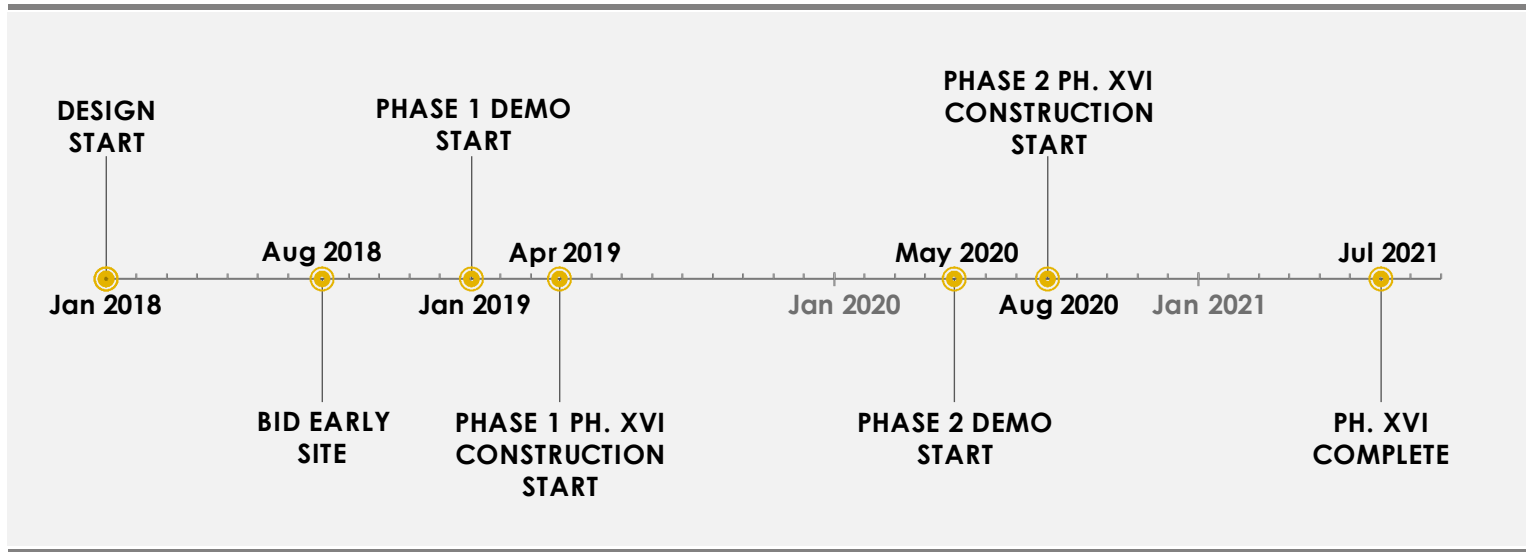
# PROJECT OVERVIEW

## SCHEDULE

- AP & EARLY SITE PACKAGE (DEMO) START JANUARY 2018
  - MOORE & SANFORD HALLS DEMO & ABATEMENT
    - BID AUGUST 2018
    - **PHASE 1 DEMO (SANFORD HALL SITE):  
JANUARY 2019 – APRIL 2019**
    - **PHASE 2 DEMO (MOORE HALL SITE):  
MAY 2020 – AUGUST 2020**
  - RESIDENCE HALL PHASE XVI BUILDING
    - CD'S COMPLETE JANUARY 2019
    - **PHASE 1 CONSTRUCTION (SANFORD HALL SITE):  
APRIL 2019 – JULY 2020**
    - **PHASE 2 CONSTRUCTION (MOORE HALL SITE):  
AUGUST 2020 – JULY 2021**
-

# PROJECT OVERVIEW

## PROJECT TIMELINE

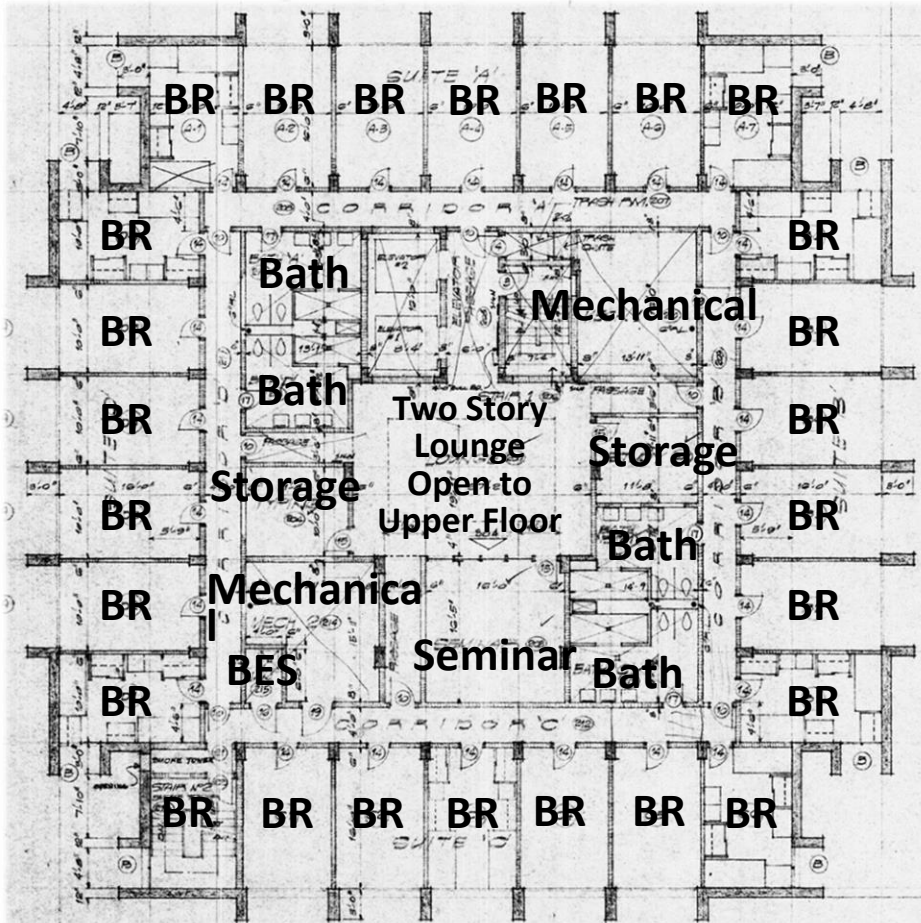


DATE	MILESTONE
January 2018	AP & Early Site Design Start
August 2018	Bid Phase 1 & 2 Early Site Package (Demo & Abatement)
January 2019 - April 2019	Phase 1 Demo (Sanford Hall)
January 2019	Ph. XVI Building CDs Complete
April 2019 - July 2020	Phase 1 Ph. XVI Building Construction (Sanford Hall site)
May 2020 - August 2020	Phase 2 Demo (Moore Hall)
August 2020 - July 2021	Phase 2 Ph. XVI Building Construction (Moore Hall site)
July 2021	Ph. XVI Complete



# PROJECT OVERVIEW

## EXISTING INFORMATION



EXISTING PLAN



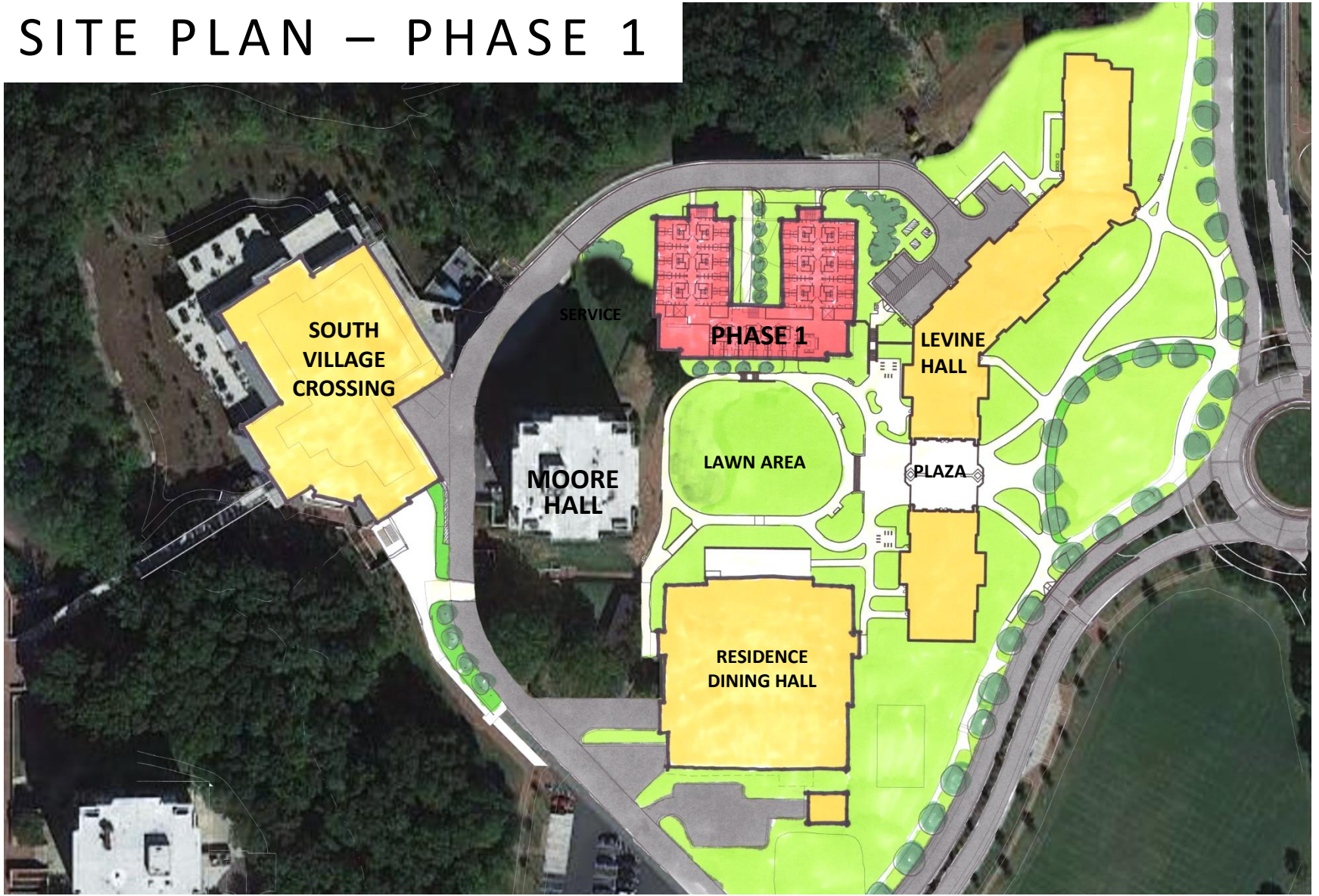
SCOPE OF WORK TO INCLUDE:  
MOORE HALL & SANFORD HALL  
DEMOLITION AND  
ABATEMENT



UNC CHARLOTTE

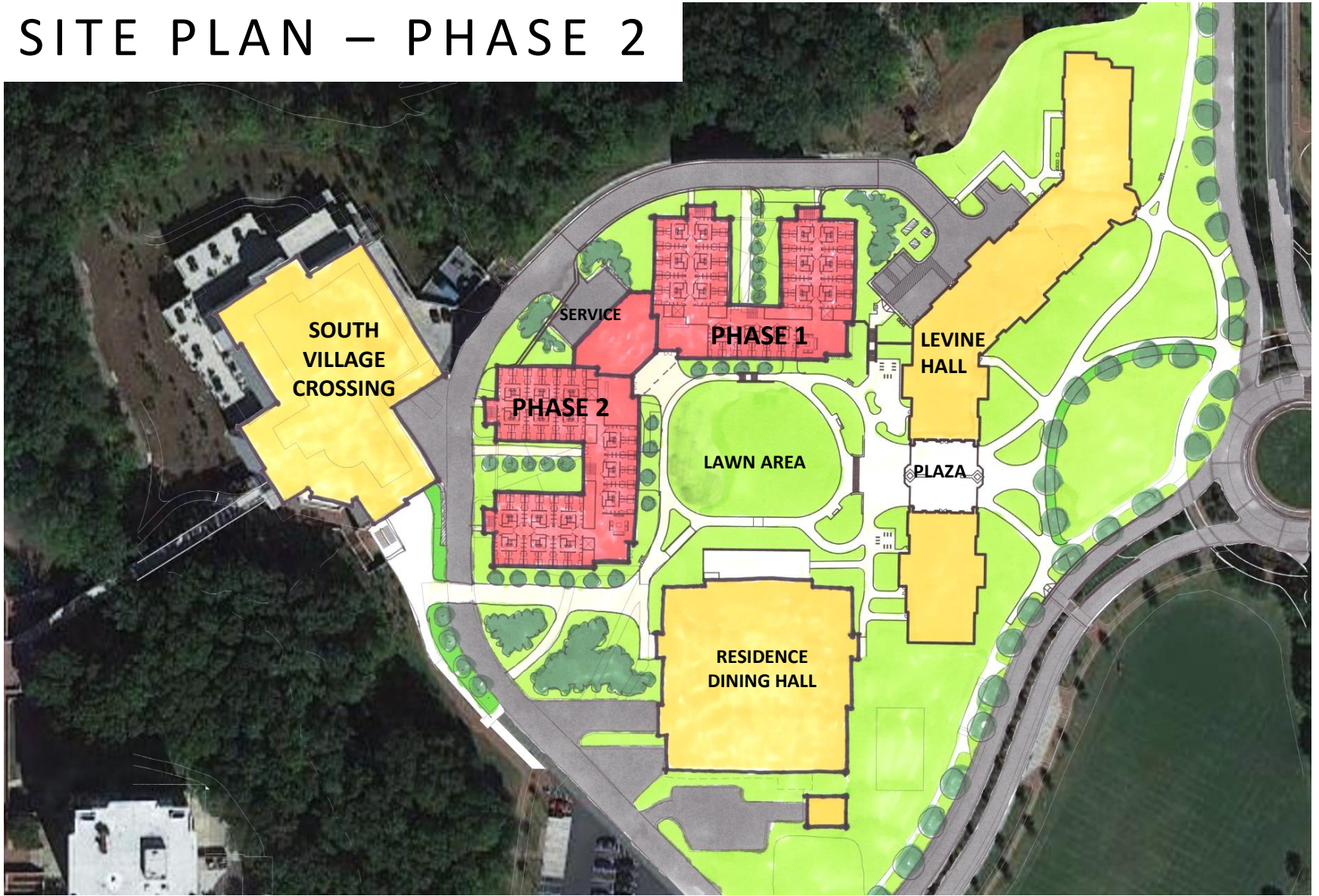
# PROJECT OVERVIEW

## SITE PLAN – PHASE 1



# PROJECT OVERVIEW

## SITE PLAN – PHASE 2



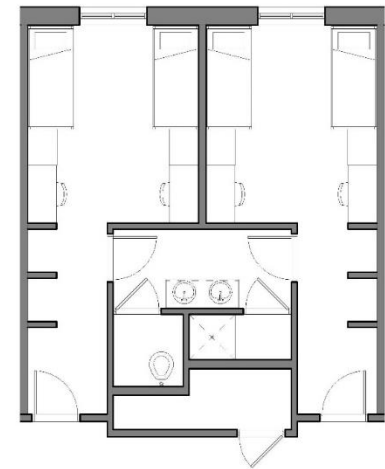


# PROJECT OVERVIEW

## TYPICAL FLOOR PLAN



TYPICAL FLOOR PLAN: FLOORS 2-5

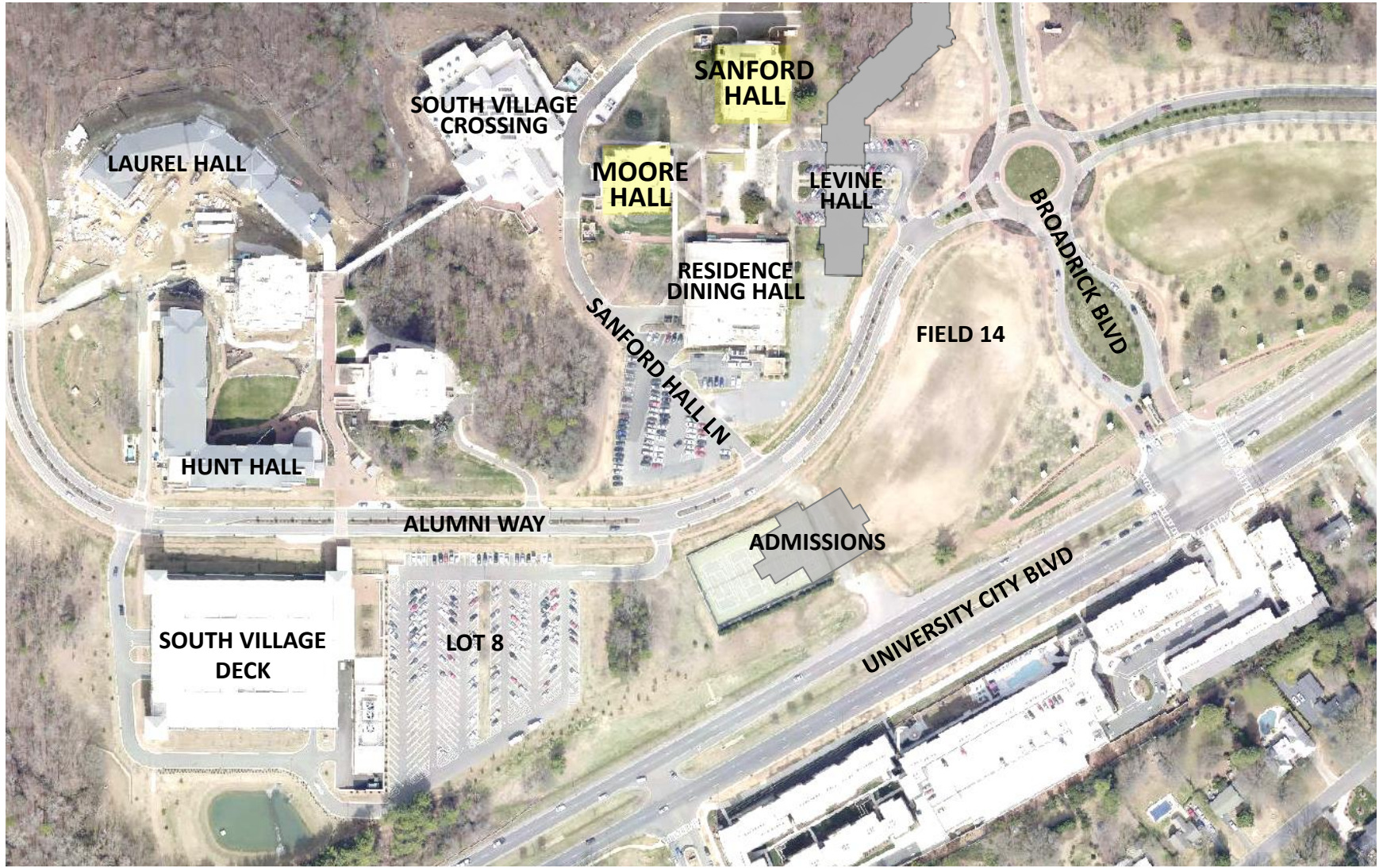


TYPICAL UNIT PLAN



# PROJECT OVERVIEW

## SOUTH VILLAGE



# Q U E S T I O N S ?



UNC CHARLOTTE

# CAMPUS MAP

## OPTIONAL SITE VISIT

