

ADDENDUM No. 2

Date: November 15, 2019

To: All Bidders

From: **Jenkins•Peer Architects**
Charlotte, N.C.

Re: UNC Charlotte – Residence Hall Phase XVI
SCO ID: 18-18333-02A
JPA Project #: 18NCC016

NOTICE to BIDDERS:

Bidder is hereby notified that this Addendum shall hereby become a part of the Construction Documents and the official Contract Documents, and shall be attached to the Project Manual for the Project.

The following items are intended to revise and clarify the Drawings and the Project Manual.

The bidder shall see that their Sub-Bidders are in full receipt of the information contained herein.

General Note:

This Addendum includes the following groups and subsequent “items” referring to various parts of the Contract Documents. Note that some “items” may refer to Bulletin Drawings or new Specification Sections which are attached at the back of the Addendum.

GENERAL REQUIREMENTS

1) **NOT USED**

PROJECT MANUAL & TECHINCAL SPECIFICATIONS DIVISIONS

1) **Section 07 21 00 – Thermal Insulation:** Revise paragraph 2.2 A 2 to read as follows: Insulation shall have an aged R value of not less than 5.0/inch.

DRAWING SHEETS:

A-624 – Updated with clouded revisions for addition of Evacuation Signage
E-200-S – Lower Level Power Plan -South – Updated with clouded revisions for motorized shades
E-803 – Panel Schedules – Lower Level - South – Updated with clouded revisions for motorized shades

RESPONSES TO EMAIL QUESTIONS (NOTE: QUESTIONS AND RESPONSES ARE INCLUDED HERE ONLY IF THEY ARE NOT RESPONDED TO ELSEWHERE IN THIS ADDENDUM):

QUESTION: Is this project Prevailing wage/Davis Bacon?

RESPONSE: No.

QUESTION: In regards to the mailboxes, the 1700 Series part called out in the specs is a Florence part, however, Florence discontinued combination locks a couple years ago. Salsbury makes a comparable. Will Salsbury be an approved substitution? Please advise.

RESPONSE: Salsbury is listed in specification Section 10 55 00 2.1 B and is an acceptable manufacturer. Disregard Florence model numbers and provide mailboxes meeting specified requirements by any of the manufacturers listed in 10 55 00 2.1

QUESTION: I do not see a schedule for manual and motorized shades, nor are shades noted on power plans. Please clarify the type of shade (manual or motorized) required in the following areas:

- 1) Large Lounge 050 / 160
- 2) Classroom 055
- 3) Study rooms
- 4) Smaller lounge rooms floors 1-5
- 5) Offices 155 & 156

RESPONSE: Locations of shades are scheduled in section 12 24 13 2.6. Motorized shades are only required in Classroom 055. All other shades are manual. See revised electrical sheets included in this addendum for power requirements for motorized shades.

MISCELLANEOUS

Civil Cad Files are being made available for earthwork calculations. Bidding GC's shall be required to request CAD files via email from Jenkins Peer Architects. Send request via email to Thom Tonetti at tonetti@jenkinspeer.com. By requesting CAD files the GC and any sub-contractor agree that their use for calculation and bidding is done solely at the bidder's risk. The use of this electronic information is solely the responsibility of the bidder and no change orders will be approved for any discrepancies, calculation errors or any other reason as a result of the use of the information provided.

The following notes are provided for additional clarification of the information contained in the CAD files:

C1.00 shows existing contours as surveyed prior to the demolition of Moore Hall.

The surface shown on C1.01, existing conditions, is the original surveyed surface with the proposed surface for part 1 of the sidewalk connection, and the surveyed as-built surface of Moore Demolition project merged as one surface to represent existing conditions.

C5.00 shows the proposed contours.

End of ADDENDUM No. 2

Attachments:

- Revised drawing sheets A-624, E-200-S and E-803



UNC CHARLOTTE
Charlotte, NC
RESIDENCE HALL
PHASE XVI

SCO ID: 18-18333-02A

TAG	DESCRIPTION	DATE
2	Addendum 2	11/15/19

Project: 18NCC016

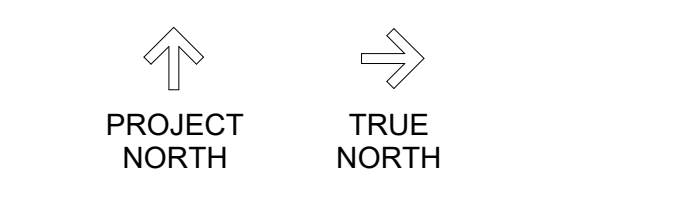
Drawn By: TJ

Checked By: PP

Date: 10/23/19

Jenkins • Peer Architects © copyright 2018

SIGNAGE PLAN & SCHEDULE



HARD BID SET

A-624

SIGN TYPE USAGE											SIGNAGE GENERAL NOTES
TYPE - A	TYPE - B	TYPE - C.1, C.3	TYPE - C.4	TYPE - D	TYPE - E	TYPE - F	TYPE - G	TYPE - H	TYPE - I	TYPE - J	
ATS BEDROOM CLASSROOM ELECTRICAL ROOM HOUSEKEEPING IT LAUNDRY LOUNGE MAIL MDF MECHANICAL PUMP ROOM RECYCLE STORAGE STUDY TELECOM TRASH	RESTROOMS	STAIR STAIR LANDING	ELEVATOR 1 ELEVATOR 2	CORRIDOR	BREAKROOM CONFERENCE LOAN KEY OFFICE STAFF	ELEVATOR 1 ELEVATOR 2	CORRIDOR	FIRE ALARM PANEL	N/A	N/A	

1. ALL ROOMS SHALL RECEIVED SIGNAGE WHETHER SPECIFICALLY INDICATED OR NOT.
2. PROVIDE WORK SIGNS ABOVE FINISHED CEILINGS AT RATED WALLS.
3. ALL FIRE EXTINGUISHER LOCATIONS SHALL RECEIVE SIGNAGE.
4. ALL SIGNAGE IS TO COMPLY WITH THE ACCESSIBILITY REQUIREMENTS SET FORTH IN THE APPROPRIATE SECTIONS OF ICC/ANSI 117-2010 - AMERICAN NATIONAL STANDARD ACCESSIBLE AND USABLE BUILDINGS AND FACILITIES.
5. SIGNAGE AT DOORS SHALL BE LOCATED SO THAT A CLEAR FLOOR AREA 18" X 18" MINIMUM, CENTERED ON THE SIGN, IS PROVIDED BEYOND THE ARC OF ANY DOOR SING BETWEEN THE CLOSED POSITION AND 45 DEGREE OPEN POSITION.
6. SIGNAGE TEXT IS TO BE RAISED TYPE, 5/8" TALL (U.N.O.) CAPITAL LETTERS WITH CORRESPONDING TEXT BELOW IN CONTRACTED (GRADE 2) BRILLE.
7. TYPICAL SIGNAGE TO HAVE A LIGHT IN COLOR BACKGROUND. ALL BORDERS, SYMBOLS AND TEXT IN A DARK CONTRASTING COLOR.
8. SIGNAGE RELATED TO FIRE-EXTINGUISHING EQUIPMENT/SERVICE TO BE SOLID RED WITH REFLECTIVE WHITE SYMBOLS & TEXT. PROVIDE ALL SIGNAGE REQUIRED BY THE FIRE SUPPRESSION AND FIRE ALARM SYSTEMS.
9. PROVIDE SIGNAGE AS DESCRIBED BELOW EACH SIGN TYPE ON THIS SHEET.

MOORE AND SANFORD HALL

- SIGN INSTALLATION NOTES:**
- CONTRACTOR TO FURNISH AND INSTALL TOTAL OF FIFTY-TWO (52) CHARACTERS - FINAL COPY TO BE PROVIDED BY OWNER (UP TO 52 CHARACTERS).
 - CONTRACTOR TO PROVIDE A CAD DRAWING AND DRAWING "PROOF" OF GRAPHICS LAYOUT PRIOR TO FABRICATING FOR REVIEW AND APPROVAL.

- SIGN FABRICATION NOTES:**
- LETTERING STOCK: ALUM 1/4", SINGLE CUT UNIT, CNC OR EQUAL CUT PROCESS. FACE, EDGES, AND BACK TO BE ANODIZED "BRONZE".
 - STUDS AND HARDWARE: STAINLESS STEEL. ALL THREAD TAPPED INTO BACK OF LETTERS AND EPOXY ADDED IN BASE FOR SECURE FASTEN. MOUNT 1" OFF FINISHED EXTERIOR SURFACE WITH SPACER.
 - TYPEFACE: UTOPIA PER UNC CHARLOTTE STANDARDS AND DESIGN & CONSTRUCTION MANUAL.

BUILDING ENTRY NAME SIGNAGE

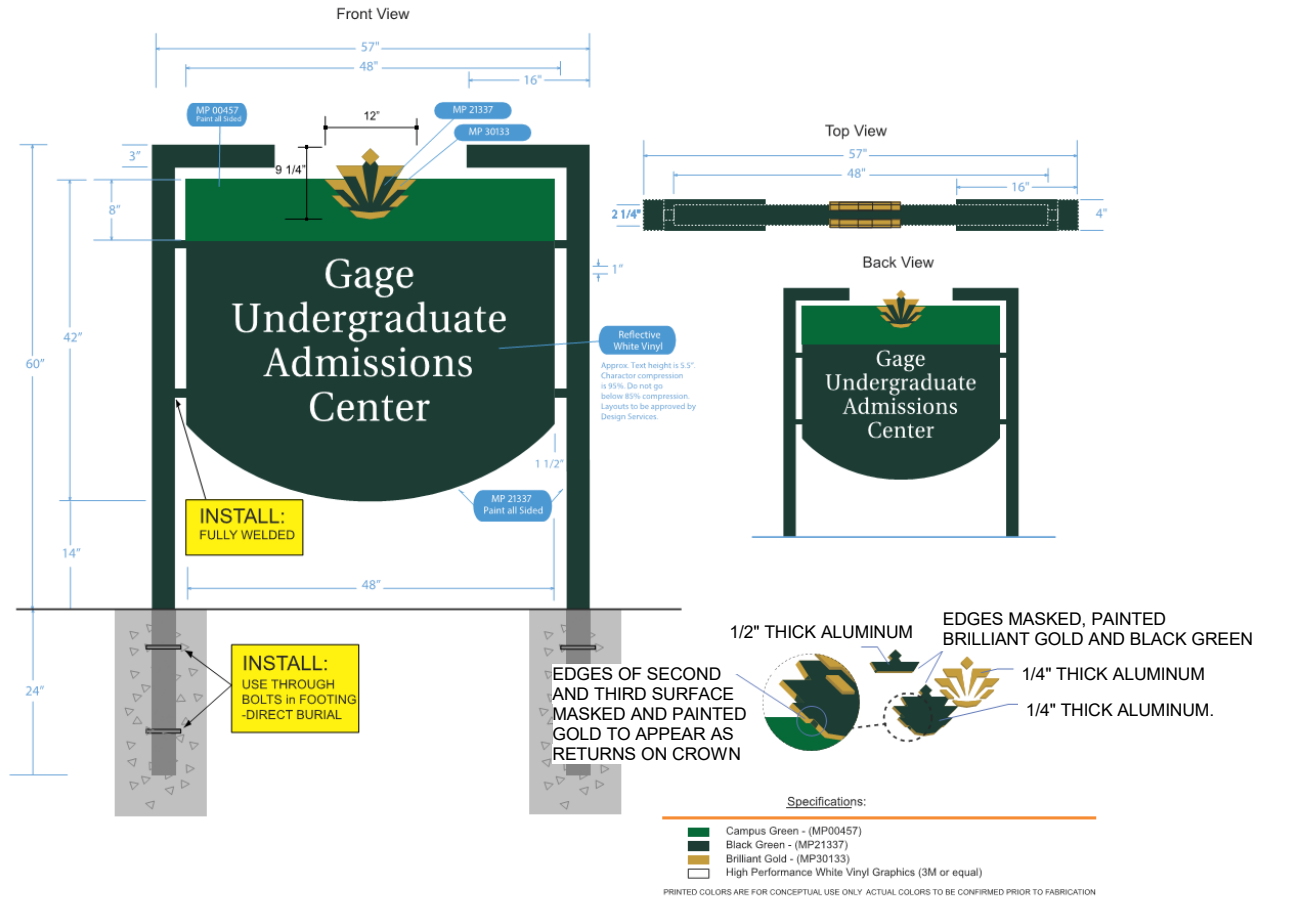
DONOR OPPORTUNITY

- SIGN INSTALLATION NOTES:**
- CONTRACTOR TO FURNISH AND INSTALL TOTAL OF SIXTEEN (16) CHARACTERS - FINAL COPY TO BE PROVIDED BY OWNER (UP TO 16 CHARACTERS).
 - CONTRACTOR TO PROVIDE A CAD DRAWING AND DRAWINGS "PROOF" OF GRAPHICS LAYOUT PRIOR TO MANUFACTURER FOR REVIEW AND APPROVAL.
- SIGN FABRICATION NOTES:**
- LETTERING STOCK: ALUM 1/4", SINGLE CUT UNIT, CNC OR EQUAL CUT PROCESS. FACE, EDGES, AND BACK TO BE ANODIZED "BRUSHED BLACK".
 - STUDS AND HARDWARE: STAINLESS STEEL. ALL THREAD TAPPED INTO BACK OF LETTERS AND EPOXY ADDED IN BASE FOR SECURE FASTEN. MOUNT 1" OFF FINISHED EXTERIOR SURFACE WITH SPACER.
 - TYPEFACE: UTOPIA PER UNC CHARLOTTE STANDARDS AND DESIGN & CONSTRUCTION MANUAL.

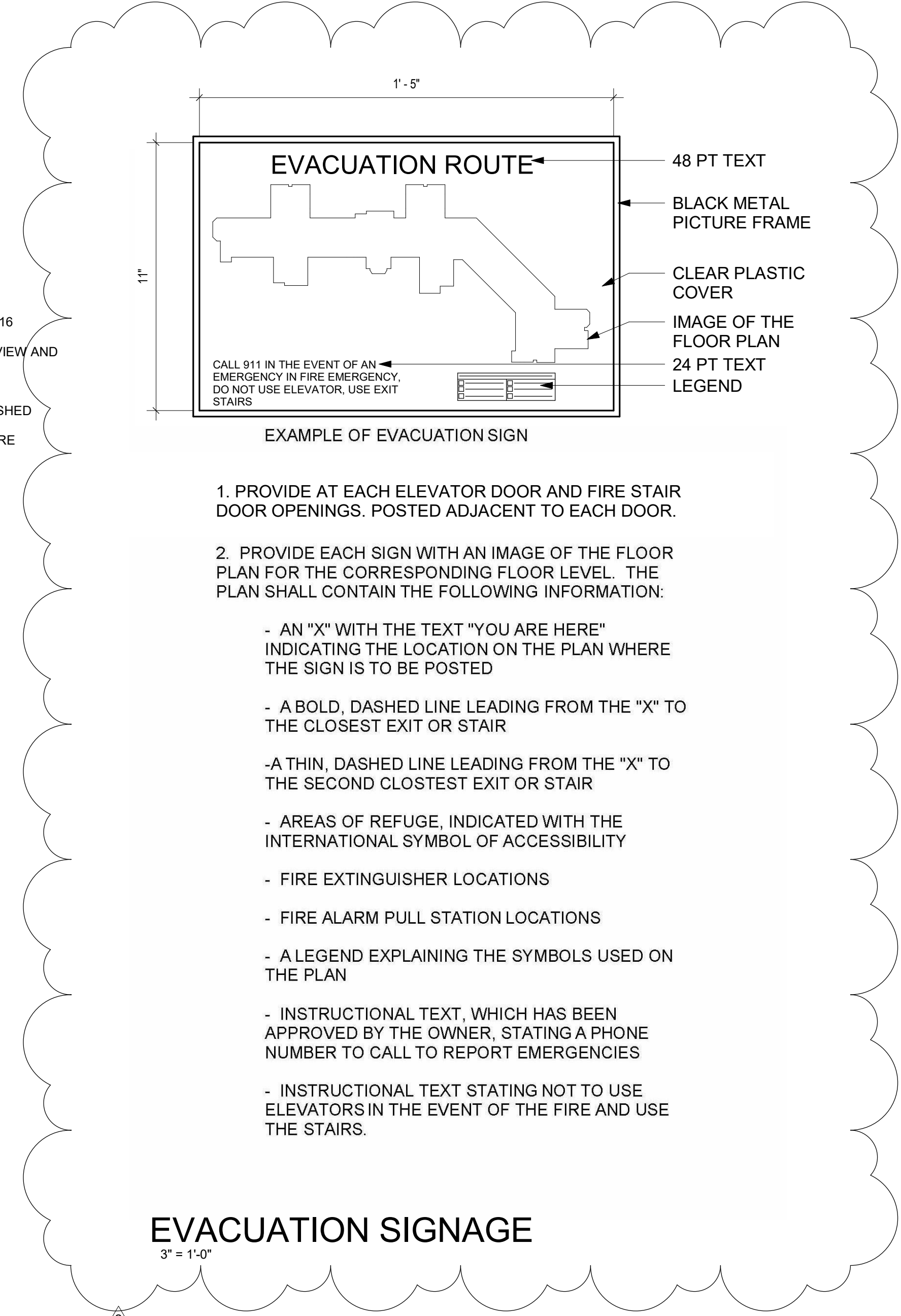
BUILDING CLASSROOM NAME SIGNAGE

NOTES:

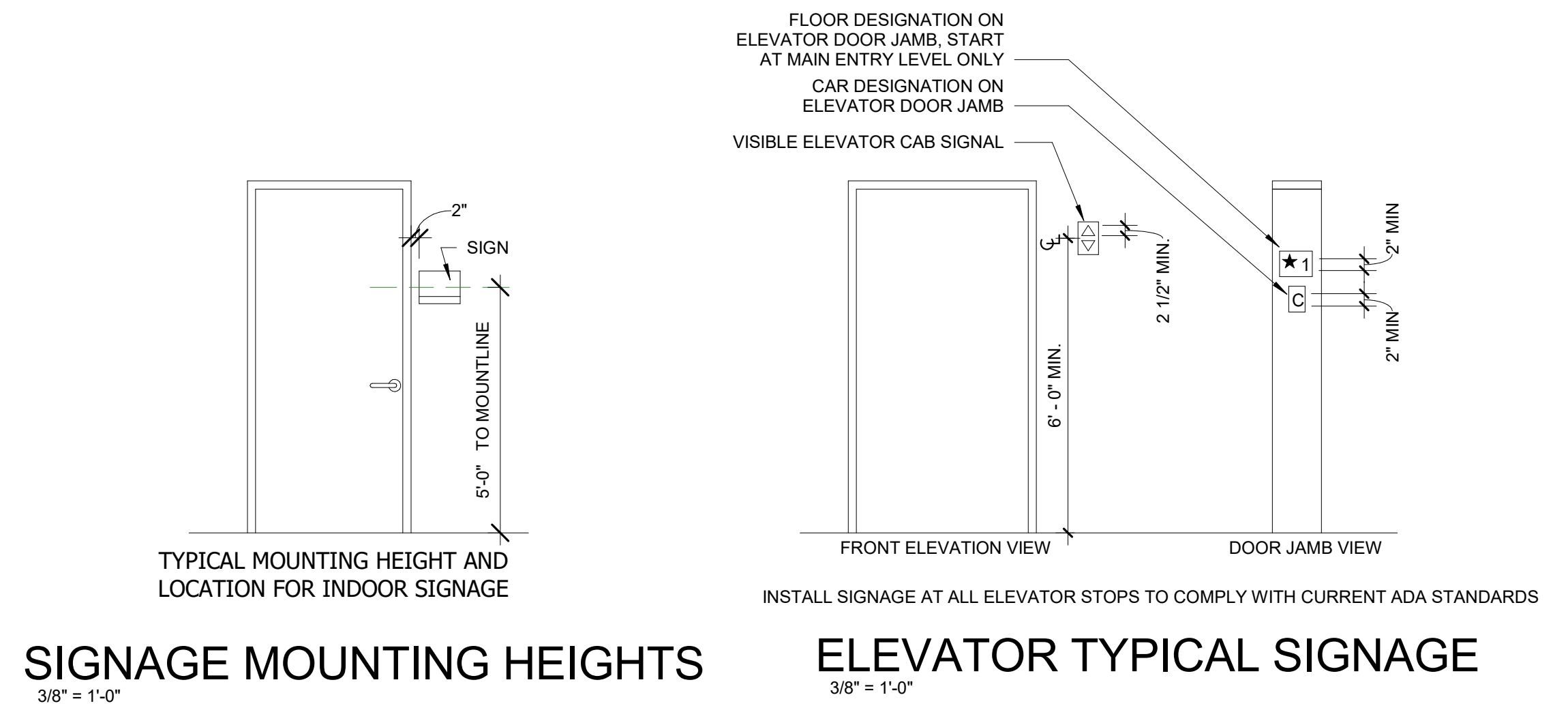
- SEE SHEET A0.01 FOR LOCATION OF SIGN
- POST AND SIGN BODY TO BE BLACK GREEN
- HEADER TO BE CAMPUS GREEN
- TEXT/GRAPHICS TO BE 3M DIAMOND GRADE PRISMATIC OR EQUAL - WHITE HIGH PERFORMANCE VINYL
- TYPEFACE: UTOPIA
- APPROX. TEXT HEIGHT IS 5.5" CHARACTER
- COMPRESSION IS 85%
- LAYOUT TO BE APPROVED BY DESIGN SERVICES



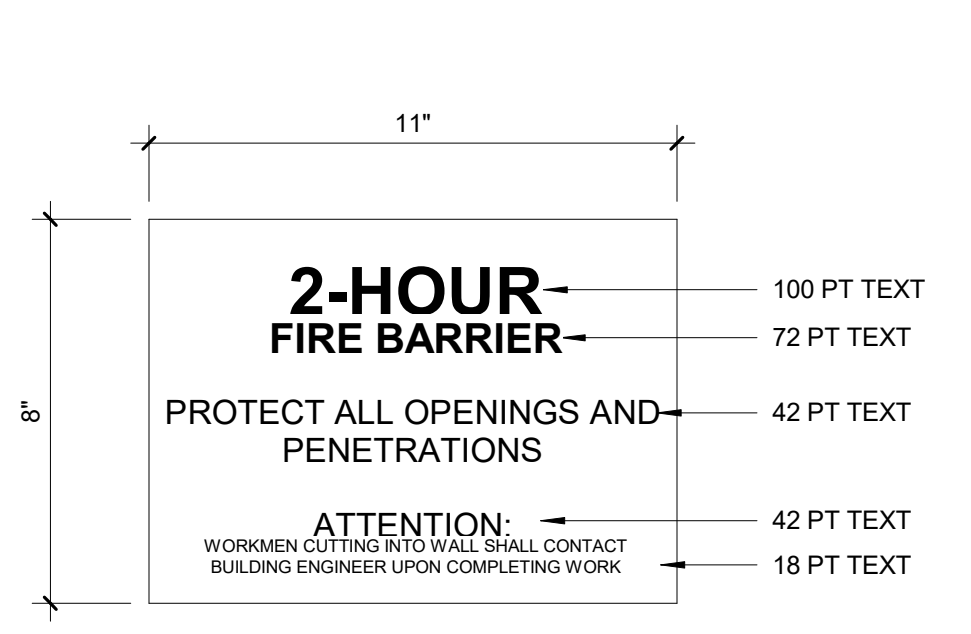
REFER TO CIVIL DRAWINGS FOR LOCATION AND QUANTITY



EVACUATION SIGNAGE



DETACHED BUILDING SIGN



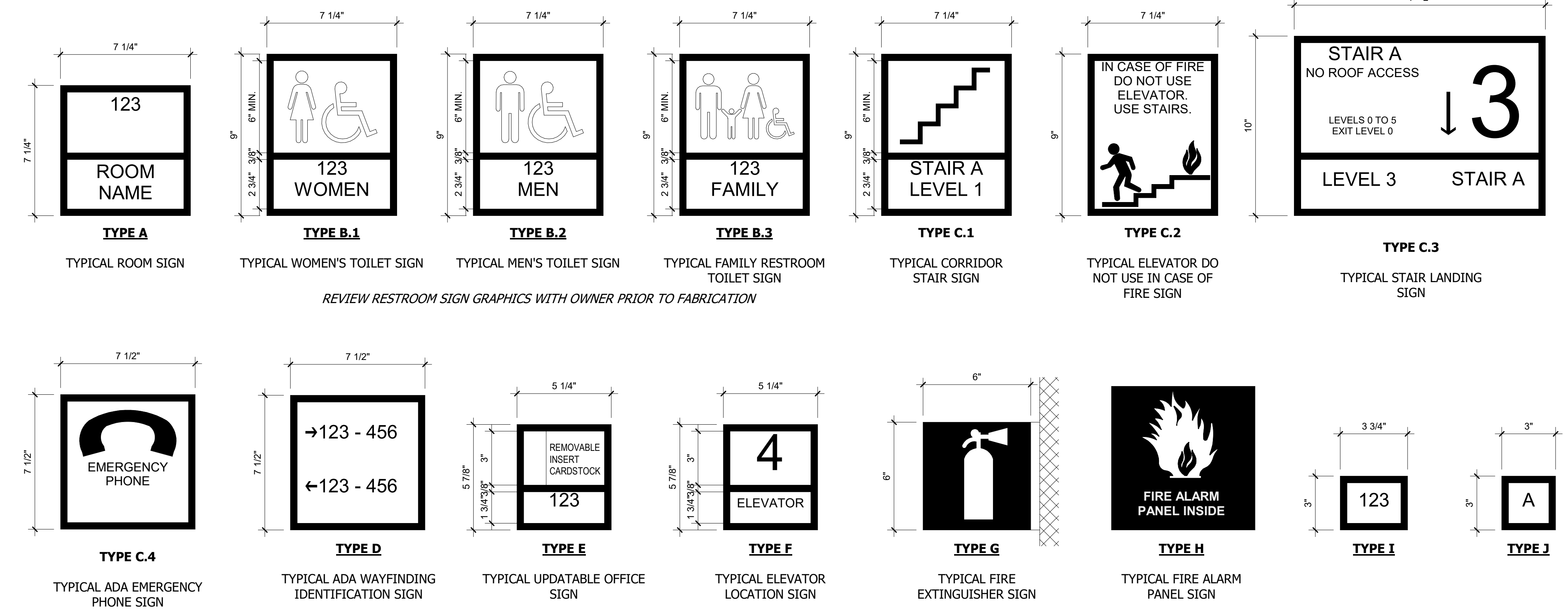
EXAMPLE OF RATED WALL IDENTIFICATION

ALL WALLS WHICH CARRY A FIRE RATING SHALL BE EFFECTIVELY & PERMANENTLY IDENTIFIED W/ SIGNAGE OR STENCILING IN A MANNER ACCEPTABLE TO THE AUTHORITY HAVING JURISDICTION.

IDENTIFICATION SHALL BE REQUIRED IN ALL CONCEALED SPACES (ABOVE CEILINGS, BELOW ACCESS FLOORING, CRAWLSPACES, ATTICS, ETC).

IDENTIFICATION SHALL BE STENCILED OR PERMANENTLY AFFIXED ON BOTH SIDES OF THE WALL EVERY 12 LINEAR FEET O.C. WITH A MINIMUM OF ONE PER WALL IF SHORTER THAN 12 FEET.

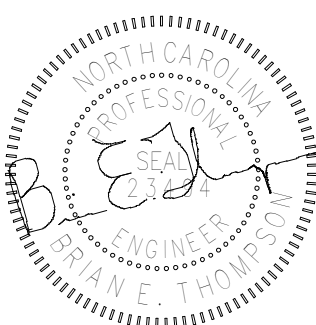
WORDING OF THE IDENTIFICATION WALL WILL INCLUDE THE WALL'S DESIGNATED RATING DURATION (1-HOUR, 2-HOUR, ETC.) & THE TYPE OF WALL CONSTRUCTION (FIRE WALL, FIRE BARRIER, FIRE PARTITION, SMOKE BARRIER, ETC.)



A

A1 BUILDING SIGNAGE

3" = 1'-0"



11/12/2019

UNC CHARLOTTE
 Charlotte, NC
 RESIDENCE HALL
 PHASE XVI

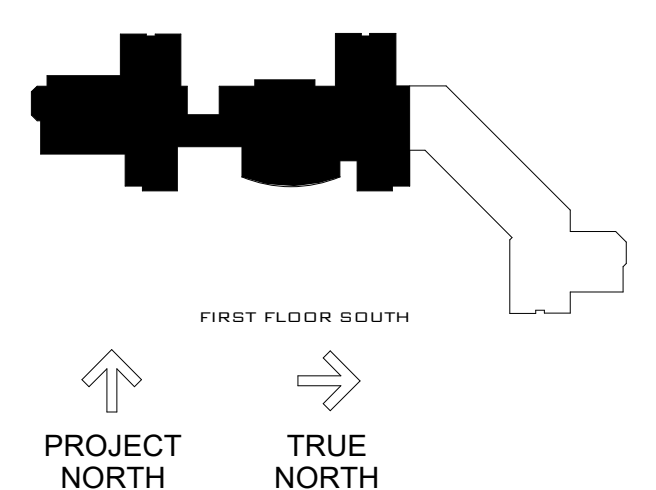
SCO ID: 18-18333-02A

TAG	DESCRIPTION	DATE
1	no revision	2019
2	Addendum 2	11/12/2019

Project: 18NCC016
 Drawn By: MH
 Designed By: JR
 Checked By: MM
 Date: 10/23/19

Jenkins • Peer Architects © copyright 2018

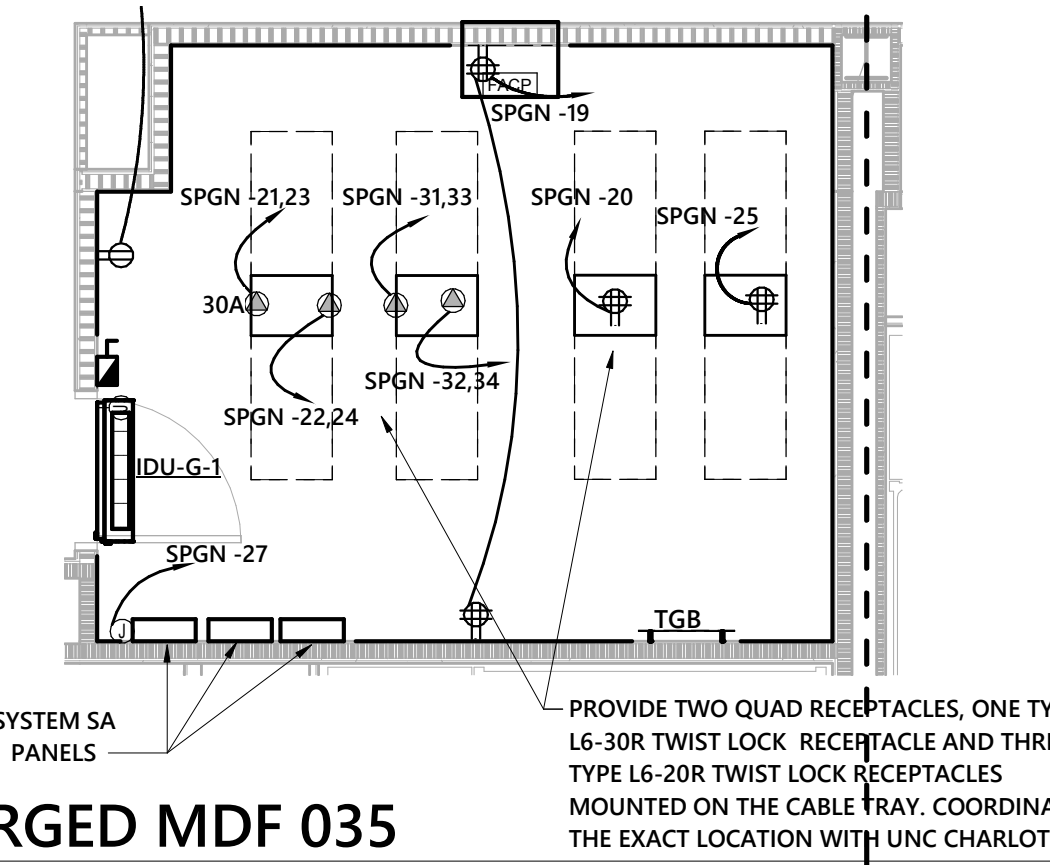
LOWER LEVEL POWER PLAN - SOUTH



HARD BID SET

E-200-S

Optima # 18-0001 Sheet 14 of 73

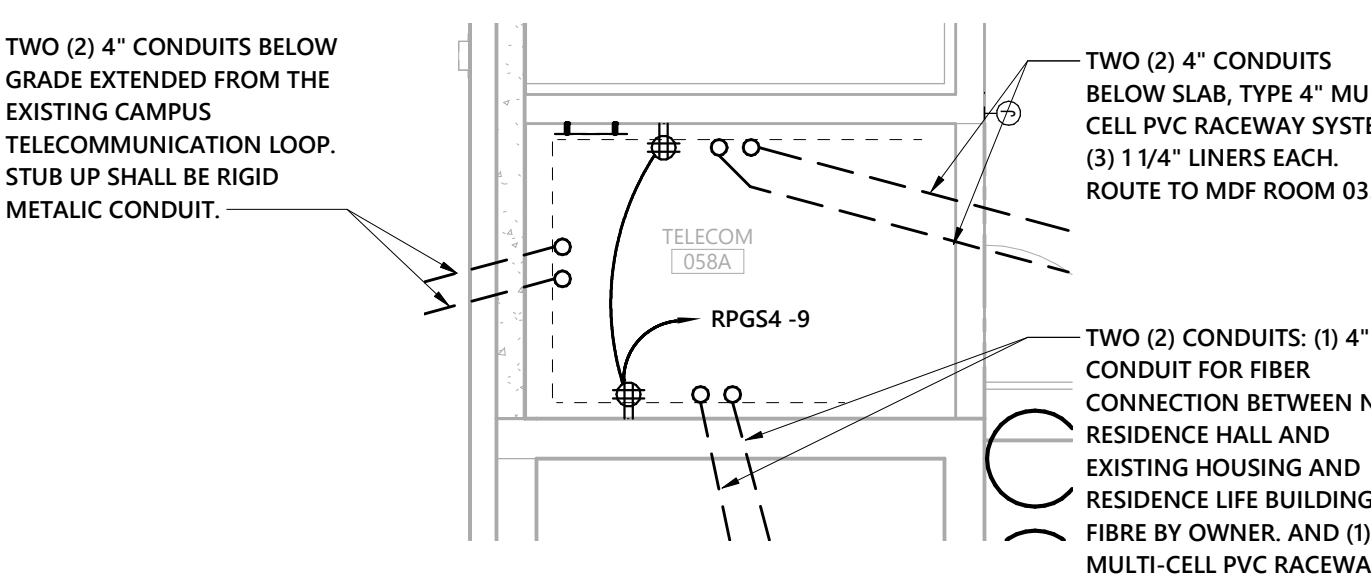


2 ENLARGED MDF 035
 1/4" = 1'-0"

- GENERAL AND KEYED NOTES:
- SEE SHEET E-817 FOR MECHANICAL AND PLUMBING EQUIPMENT BRANCH CIRCUITS.
 - TYPICAL - FOR ALL TV OUTLETS IN THIS CLASSROOM PROVIDE A QUAD OUTLET IN LIEU OF A DUPLEX OUTLET.
 - TYPICAL - FOR ALL FLOOR BOXES IN THIS ROOM, PROVIDE A 1.25" CONDUIT FROM THE FLOOR BOX TO THE ASSOCIATED TV BOX.
 - PROVIDE A 1.25" CONDUIT FROM THE PODIUM FLOOR BOX TO IT ROOM 056A. STUB UP 9" AFF IN THE CORNER OF THE ROOM.
 - VERIFY EXACT LOCATION OF FLOOR BOXES WITH THE OWNER PRIOR TO ROUGH-IN.
 - AT THIS LOCATION PROVIDE THE TV BACK BOX, DUPLEX RECEPTACLE PER THE TV DETAIL. COORDINATE THE EXACT MOUNTING HEIGHT OF THIS DEVICE WITH UNC CHARLOTTE PRIOR TO ROUGH-IN.
 - HOOD AND EXHAUST SYSTEM FOR KITCHEN 050A. PROVIDE COMPLETE WIRING OF DENLAR 1000 RANGE HOOD, EXHAUST FAN AND MECHANICAL FIRE SUPPRESSION SYSTEM. PROVIDE FIRE ALARM CONNECTION AND 120 VOLT POWER FOR THE HOOD LIGHTS AND EXHAUST FAN. EXHAUST FAN IS REMOTE FROM HOOD AND ABOVE THE CEILING. FAN POWER IS FROM HOOD SYSTEM. WIRE FROM FAN TO HOOD CONTROLS PER MANUFACTURERS WIRING DIAGRAM. INSTALL REMOTE SWITCHES FOR THE ADA FAN SWITCH AND THE ADA LIGHT SWITCH. SWITCHES PROVIDED WITH EQUIPMENT. VERIFY LOCATION OF SWITCHES WITH THE GENERAL CONTRACTOR PRIOR TO ROUGH-IN. PROVIDE INTERFACE WIRING TO ELECTRIC RANGE ELEMENT DISCONNECT SHUT DOWN SYSTEM POWER TO THE RANGE IN THE EVENT THE FIRE SUPPRESSION SYSTEM REQUIREMENTS PROVIDED BY THE MANUFACTURER.
 - ELECTRIC SHADES, 120 VOLTS, 2.3 AMPS PER MOTOR. COORDINATE ALL WIRING AND INSTALLATION OF WALL SWITCHES, BUS INTERFACE, BUS POWER SUPPLY AND CONNECTION TO MOTORS. EACH MOTOR HAS A SEPARATE ELECTRONIC ADDRESS FOR CONTROL BY SWITCH OR REMOTE SOURCE SWITCH, BUS INTERFACE, AND LOW VOLTAGE BUS POWER SUPPLY ARE PROVIDED BY THE SHADE SUPPLIER. VERIFY ALL INSTALLATION REQUIREMENTS PRIOR TO ROUGH-IN. PROVIDE ALL POWER AND LOW VOLTAGE WIRING AS REQUIRED BY THE SHADE MANUFACTURER.

ROOM NUMBER	CIRCUIT #1	CIRCUIT #2
2BD DOUBLE 037	RPGN3-12	RPGN3-13
2BD DOUBLE 039	RPGN3-14	RPGN3-15
2BD DOUBLE 041	RPGN3-16	RPGN3-17
2BD DOUBLE 043	RPGN3-18	RPGN3-19
2BD DOUBLE 044	RPGN3-20	RPGN3-21
2BD DOUBLE 045	RPGN3-22	RPGN3-23
2BD DOUBLE 046	RPGN3-24	RPGN3-25
2BD DOUBLE 047	RPGN3-26	RPGN3-27
2BD DOUBLE 048	RPGN3-28	RPGN3-29

- THE BACK SIDE OF ALL CONDUITS/RACEWAYS STUB UP TO BE LOCATED AT 4" OFF THE WALL AND SOLIDLY SUPPORTED BY UNSTRUT OFF THE WALL. STUB UP 36" AFF. CONDUITS SHALL BE STRAIGHT AND VERTICAL FROM FLOOR TO 36" AFF.
- ALL UNDERGROUND CONDUITS/RACEWAYS SHALL BE CONCRETE ENCASED IN A DUCT BANK.
- SEE SITE PLAN FOR CONTINUATION OF UNDERGROUND CONDUITS/RACEWAYS.



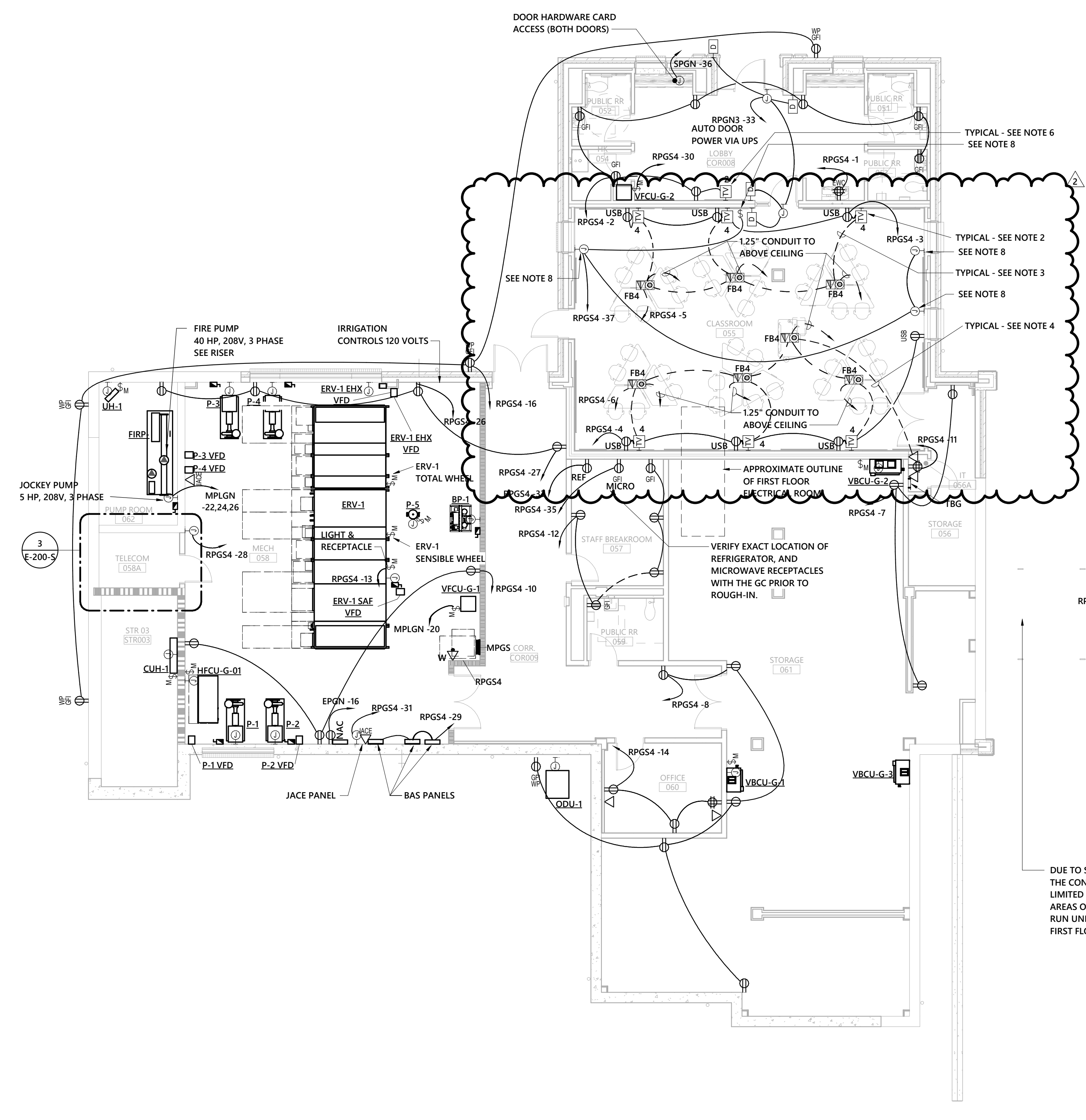
3 ENLARGED TELECOM ROOM 058A
 1/4" = 1'-0"

D

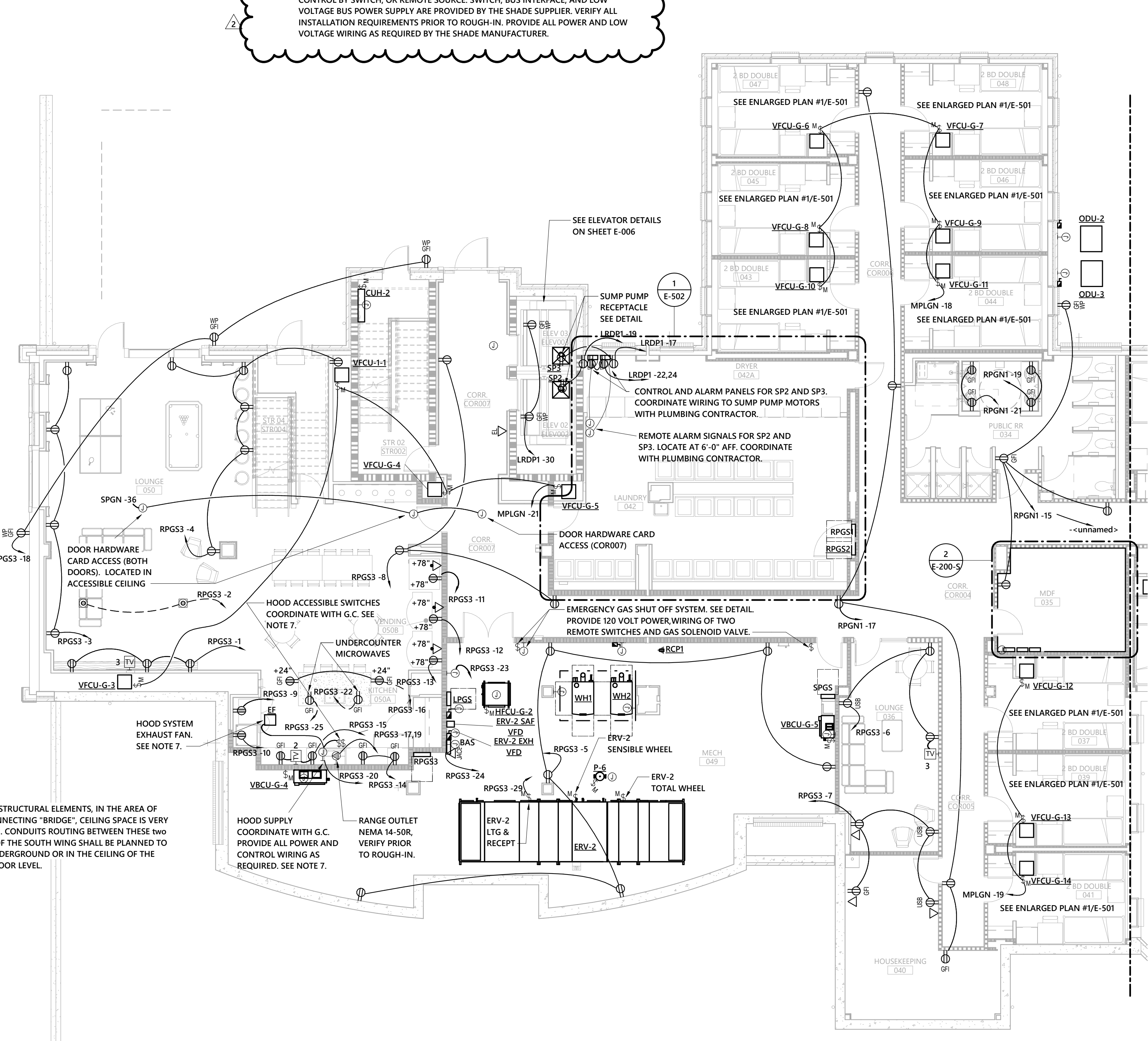
C

B

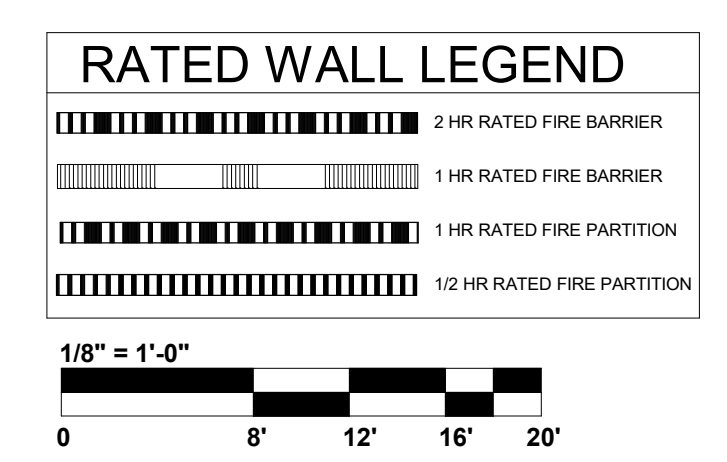
A



1 LOWER LEVEL POWER PLAN - SOUTH
 1/8" = 1'-0"



DUE TO STRUCTURAL ELEMENTS, IN THE AREA OF THE CONNECTING "BRIDGE", CEILING SPACE IS VERY LIMITED. CONDUITS ROUTING BETWEEN THESE TWO AREAS OF THE SOUTH WING SHALL BE PLANNED TO RUN UNDERGROUND OR IN THE CEILING OF THE FIRST FLOOR LEVEL.

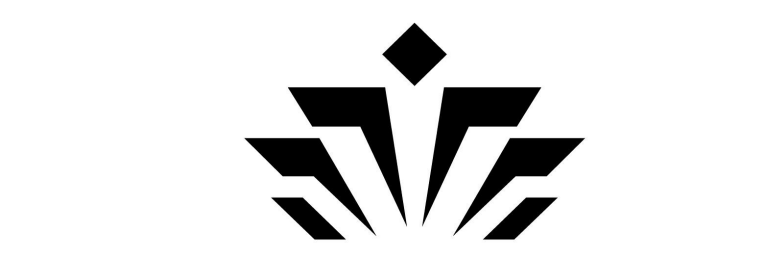


1/8" = 1'-0"





11/12/2019



UNC CHARLOTTE

Charlotte, NC

RESIDENCE HALL
PHASE XVI

SCO ID: 18-18333-02A

TAG DESCRIPTION DATE

1	no revision	2019
2	Addendum 2	11/12/2019

Project: 18NCC016

Drawn By: MH

Designed By: JR

Checked By: MM

Date: 10/23/19

Jenkins • Peer Architects © copyright 2018

PANEL SCHEDULES -
LOWER LEVEL SOUTH

PANEL: RPGS1 FED FROM: DPGN
VOLTAGE: 208Y/120 MOUNTING: SURFACE MAIN: 225 A
MAIN TYPE: MCB PHASE: 3 WIRE: 4
MFR: TYE AIC: 14,000

LOAD SERVED	Wire Size	TRIP	CKT NO	POLE S	A (LOAD KVA)	B (LOAD KVA)	C (LOAD KVA)	POLE S	CKT NO	TRIP	Wire Size	LOAD SERVED		
WASHER	12	20 A	1	1	0.5	0.5		1	2	20 A	12	WASHER		
WASHER	12	20 A	3	1		0.5	0.5	1	6	20 A	12	WASHER		
WASHER	12	20 A	5	1			0.5	0.5	1	8	20 A	12	WASHER	
WASHER	12	20 A	7	1	0.5	0.5		1	10	20 A	12	WASHER		
WASHER	12	20 A	9	1		0.5	0.5	1	10	20 A	12	WASHER		
WASHER	12	20 A	11	1			0.5	0.5	1	12	20 A	12	WASHER	
WASHER	12	20 A	13	1	0.5	0.5		1	14	20 A	12	WASHER		
WASHER	12	20 A	15	1		0.5	0.5	1	16	20 A	12	WASHER		
WASHER	12	20 A	17	1			0.5	0.5	1	18	20 A	12	WASHER	
WASHER	12	20 A	19	1	0.5	0.5		1	20	20 A	12	WASHER		
WASHER	12	20 A	21	1		0.5	0.5	1	22	20 A	12	WASHER		
WASHER	12	20 A	23	1			0.5	0.5	1	24	20 A	12	WASHER	
WASHER	12	20 A	25	1	0.5	0.5		1	26	20 A	12	WASHER		
LAUNDRY READER	12	15 A	27	1		0.2	0.5	1	28	20 A	12	RECEPTACLES LAUNDRY 050		
RECEPTACLES LAUNDRY 050	12	20 A	29	1			0.5	0.5	1	30	30 A	10	DRYER	
DRYER	10	30 A	31	2	3.0	3.0		2	32	30 A	10	DRYER		
DRYER	10	30 A	33	2		3.0	3.0	2	34	30 A	10	DRYER		
DRYER	10	30 A	35	2			3.0	3.0	2	36	30 A	10	DRYER	
DRYER	10	30 A	37	2				3.0	3.0	2	38	30 A	10	DRYER
DRYER	10	30 A	39	2					40	20 A	--	SPARE		
DRYER	10	30 A	41	2					42	20 A	--	SPARE		

LOAD Connected Load Demand Factor Estimated Demand NOTES:

LIGHTS 0 VA 0.00% 0 VA 1. BREAKER FRAME SHALL BE AS REQ'D PER PANEL AIC RATING.
HEATING 0 VA 0.00% 0 VA 2. SHALL BE FULLY RATED - SERIES RATINGS NOT ALLOWED.
COOLING 0 VA 0.00% 0 VA 3. ALL BUSSING, INCL GND AND NEUTRAL, SHALL BE COPPER.
VENTILATION 0 VA 0.00% 0 VA 4. ALL INCOMING PANEL & BRKR LUGS SHALL MATCH FEEDERS.
MOTORS 0 VA 0.00% 0 VA 5. PROVIDE HINGED DOOR-IN-DOOR WITH OUTER DOOR LOCK.
KITCHEN 0 VA 0.00% 0 VA 6. PROVIDE METAL DIRECTORY FRAME.
RECEPTACLES 37980 VA 63.48% 23540 VA
WATER HEATER 0 VA 0.00% 0 VA
MISC. 13180 VA 100.00% 13180 VA
Spare 0 VA 0.00% 0 VA

TOTAL KVA (CONNECTED): 50.3 KVA TOTAL PER PHASE: (CONNECTED)
TOTAL KVA (DEMAND): 36.7 KVA 141.9 A 139.6 A 137.8 A
TOTAL AMP (CONNECTED): 140 A
TOTAL AMP (DEMAND): 102 A

PANEL: RPGS2 FED FROM: DPGN
VOLTAGE: 208Y/120 MOUNTING: SURFACE MAIN: 400 A
MAIN TYPE: MCB PHASE: 3 WIRE: 4
MFR: TYE AIC: 14,000

LOAD SERVED	Wire Size	TRIP	CKT NO	POLE S	A (LOAD KVA)	B (LOAD KVA)	C (LOAD KVA)	POLE S	CKT NO	TRIP	Wire Size	LOAD SERVED		
DRYER	10	30 A	1	2	3.0	3.0		2	2	30 A	10	DRYER		
DRYER	10	30 A	3	2		3.0	3.0	2	4	30 A	10	DRYER		
DRYER	10	30 A	5	2	3.0	3.0		2	6	30 A	10	DRYER		
DRYER	10	30 A	7	2			3.0	3.0	2	8	30 A	10	DRYER	
DRYER	10	30 A	9	2			3.0	3.0	2	10	30 A	10	DRYER	
DRYER	10	30 A	11	2				3.0	3.0	2	12	30 A	10	DRYER
DRYER	10	30 A	13	2	3.0	3.0		2	14	30 A	10	DRYER		
DRYER	10	30 A	15	2				3.0	3.0	2	16	30 A	10	DRYER
DRYER	10	30 A	17	2				3.0	3.0	2	18	30 A	10	DRYER
DRYER	10	30 A	19	2	3.0	3.0		2	20	30 A	10	DRYER		
DRYER	10	30 A	21	2				3.0	3.0	2	22	30 A	10	DRYER
DRYER	10	30 A	23	2				3.0	3.0	2	24	30 A	10	DRYER
DRYER	10	30 A	25	2	3.0	3.0		2	26	30 A	10	DRYER		
DRYER	10	30 A	27	2				3.0	3.0	2	28	30 A	10	DRYER
DRYER	10	30 A	29	2				3.0	3.0	2	30	30 A	10	DRYER
DRYER	10	30 A	31	2	3.0	3.0		2	32	30 A	10	DRYER		
DRYER	10	30 A	33	2				3.0	3.0	2	34	30 A	10	DRYER
DRYER	10	30 A	35	2				3.0	3.0	2	36	30 A	10	DRYER
DRYER	10	30 A	37	2	3.0	3.0		2	38	30 A	10	DRYER		
DRYER	10	30 A	39	2					40	30 A	10	DRYER		
DRYER	10	30 A	41	2					42	30 A	10	DRYER		
SPACE ONLY	--	--	--	--	--	--	--	0.0	0.0	--	--	SPACE ONLY		

LOAD Connected Load Demand Factor Estimated Demand NOTES:

LIGHTS 0 VA 0.00% 0 VA 1. BREAKER FRAME SHALL BE AS REQ'D PER PANEL AIC RATING.
HEATING 0 VA 0.00% 0 VA 2. SHALL BE FULLY RATED - SERIES RATINGS NOT ALLOWED.
COOLING 0 VA 0.00% 0 VA 3. ALL BUSSING, INCL GND AND NEUTRAL, SHALL BE COPPER.
VENTILATION 0 VA 0.00% 0 VA 4. ALL INCOMING PANEL & BRKR LUGS SHALL MATCH FEEDERS.
MOTORS 0 VA 0.00% 0 VA 5. PROVIDE HINGED DOOR-IN-DOOR WITH OUTER DOOR LOCK.
KITCHEN 0 VA 0.00% 0 VA 6. PROVIDE METAL DIRECTORY FRAME.
RECEPTACLES 120000 VA 54.17% 65000 VA
WATER HEATER 0 VA 0.00% 0 VA
MISC. 0 VA 0.00% 0 VA
Spare 0 VA 0.00% 0 VA

TOTAL KVA (CONNECTED): 120.0 KVA TOTAL PER PHASE: (CONNECTED)
TOTAL KVA (DEMAND): 65.0 KVA 357.7 A 357.7 A 300.0 A
TOTAL AMP (CONNECTED): 333 A
TOTAL AMP (DEMAND): 180 A

PANEL: RPGS3 FED FROM: DPGN
VOLTAGE: 208Y/120 MOUNTING: SURFACE MAIN: 100 A
MAIN TYPE: MCB PHASE: 3 WIRE: 4
MFR: TYE AIC: 10,000

LOAD SERVED	Wire Size	TRIP	CKT NO	POLE S	A (LOAD KVA)	B (LOAD KVA)	C (LOAD KVA)	POLE S	CKT NO	TRIP	Wire Size	LOAD SERVED		
RECEPTACLES LOUNGE 051	12	20 A	1	1	0.5	0.7		1	2	20 A	12	RECEPTACLES LOUNGE 051		
RECEPTACLES LOUNGE 051	12	20 A	3	1		0.7	1.1	1	4	20 A	12	RECEPTACLES LOUNGE 051		
RECEPTACLES LOUNGE 051	12	20 A	5	1			1.1	0.6	1	6	20 A	12	RECEPTACLES LOUNGE 051	
RECEPTACLES LOUNGE 051	12	20 A	7	1	0.7	0.5		1	8	20 A	12	RECEPTACLES LOUNGE 051		
RECEPTACLES STUDY 038	12	20 A	9	1		0.2	0.2	1	10	20 A	12	RECEPTACLES LOUNGE 051		
REFRIGERATOR KITCHEN 050A (8)	12	20 A	9	1		0.2	0.2	1	10	20 A	12	REFRIGERATOR KITCHEN 050A (8)		
VENDING MACHINE 050B (8)	12	20 A	11	1			1.0	0.2	1	12	20 A	12	VENDING MACHINE KITCHEN 050A (8)	
VENDING MACHINE KITCHEN 050A (8)	12	20 A	13	1	0.2	0.4		1	14	20 A	12	RECEPTACLES KITCHEN 050A		
RECEPTACLES KITCHEN 050A	12	20 A	15	1			0.5	0.4	1	16	20 A	12	RECEPTACLES LOUNGE 051	
RANGE KITCHEN 050A (7)	8	50 A	17	2	3.2	0.2		3.2	0.5	1	20	20 A	12	RECEPTACLES EXTERIOR
SHUNT TRIP POWER	--	20 A	21	1		0.0	1.0		1	22	20 A	12	MICROWAVE KITCHEN 050A	
JACE MECH 049	12	20 A	23	1			0.1	1.2	1	24	20 A	12	BAS MECH 049	
MICROWAVE KITCHEN 050A	12	20 A	25	1	1.0	0.0			1	26	20 A	--	SPARE	
SMOKE DAMPER CONTROLS	12	20 A	27	1			0.1	0.0	1	28	20 A	--	SPARE	
ERV-1 LTS AND RECEPT_MECH 049	12	20 A	29	1			0.4	0.0	1	30	20 A	--	SPARE	
SPARE	--	20 A	31	1	0.0	0.0		0.0	0.0	1	32	20 A	--	SPARE
SPARE	--	20 A	33	1			0.0	0.0	1	34	20 A	--	SPARE	
SPARE	--	20 A	35	1			0.0	0.0	1	36	20 A	--	SPARE	
SPARE	--	20 A	37	1	0.0	0.0		0.0	0.0	1	38	20 A	--	SPARE
SPARE	--	20 A	39	1			0.0	0.0	1	40	20 A	--	SPARE	
SPARE	--	20 A	41	1			0.0	0.0	1	42	20 A	--	SPARE	

LOAD Connected Load Demand Factor Estimated Demand NOTES:

LIGHTS 0 VA 0.00% 0 VA 1. BREAKER FRAME SHALL BE AS REQ'D PER PANEL AIC RATING.
HEATING 0 VA 0.00% 0 VA 2. SHALL BE FULLY RATED - SERIES RATINGS NOT ALLOWED.
COOLING 0 VA 0.00% 0 VA 3. ALL BUSSING, INCL GND AND NEUTRAL, SHALL BE COPPER.
VENTILATION 0 VA 0.00% 0 VA 4. ALL INCOMING PANEL & BRKR LUGS SHALL MATCH FEEDERS.
MOTORS 0 VA 0.00% 0 VA 5. PROVIDE HINGED DOOR-IN-DOOR WITH OUTER DOOR LOCK.
KITCHEN 200 VA 100.00% 200 VA 6. PROVIDE METAL DIRECTORY FRAME.
RECEPTACLES 19040 VA 76.26% 14620 VA 7. PROVIDE BREAKER WITH SHUNT TRIP.
WATER HEATER 0 VA 0.00% 0 VA 8. PROVIDE GFCI CIRCUIT BREAKER.
MISC. 147 VA 100.00% 147 VA
Spare 0 VA 0.00% 0 VA

TOTAL KVA (CONNECTED): 19.8 KVA TOTAL PER PHASE: (CONNECTED)
TOTAL KVA (DEMAND): 15.3 KVA 66.5 A 33.8 A 73.3 A
TOTAL AMP (CONNECTED): 55 A
TOTAL AMP (DEMAND): 42 A

PANEL: RPGS4 FED FROM: DPGN
VOLTAGE: 208Y/120 MOUNTING: SURFACE MAIN: 100 A
MAIN TYPE: MCB PHASE: 3 WIRE: 4
MFR: TYE AIC: 10,000

LOAD SERVED	Wire Size	TRIP	CKT NO	POLE S	A (LOAD KVA)	B (LOAD KVA)	C (LOAD KVA)	POLE S	CKT NO	TRIP	Wire Size	LOAD SERVED	
EWG LOBBY 052 (7)	10	20 A	1	1	0.3	0.8		1	2	20 A	10	RECEPTACLES ROOM 052	
RECEPTACLES CLASSROOM 055	12	20 A	3	1		0.9	1.2	1	4	20 A	12	RECEPTACLES CLASSROOM 055	
RECEPTACLES CLASSROOM 055	12	20 A	5	1			1.1	1.4	1	6	20 A	12	RECEPTACLES CLASSROOM 055
RECEPTACLES STOR. 064	12	20 A	7	1	0.5	0.9		1	8	20 A	12	RECEPTACLES ROOM 064, 058	
RECEPTACLES ROOM 058A	12	20 A	9	1		0.7	0.5	1	10	20 A	12	RECEPTACLES MECH 059	
RECEPTACLES ROOM 058A	12	20 A	11	1			0.4	0.7	1	12	20 A	12	RECEPTACLES STORAGE 056
ERV-1 LTS AND RECEPT_MECH 059	12	20 A	13	1	0.4	0.7		1	14	20 A	12	RECEPTACLES ROOM 056	
CART CHARGING STATION	10	20 A	15	1		0.8	0.7	1	16	20 A	12	RECEPTACLES ROOM 060	
CART CHARGING STATION	10	20 A	17	1			0.8	0.8	1	18	20 A	10	CART CHARGING STATION
CART CHARGING STATION	10	20 A	19	1	0.8	0.8		1	20	20 A	10	CART CHARGING STATION	
CART CHARGING STATION	10	20 A	21	1		0.8	0.8	1	22	20 A	10	CART CHARGING STATION	
CART CHARGING STATION	10	20 A	23	1			0.8	0.8	1	24	20 A	10	CART CHARGING STATION
CART CHARGING STATION	10	20 A	25	1	0.8	0.0		1	26	20 A	12	RECEPTACLES MECH 059	
RECEPTACLES ROOM 058	12	20 A	27	1		0.7	1.2	1	28	20 A	12	JACE MECH 059	
BAS_MECH 059	12	20 A	29	1			0.9	0.2	1	30	20 A	12	HEATING LOBBY 052
JACE MECH 059	12	20 A	31	1	0.1	0.0		1	32	20 A	--	SPARE	
REFRIGERATOR ROOM 057 (7)	12	20 A	33	1		0.7	0.0	1	34	20 A	--	SPARE	
MICROWAVE ROOM 057	12	20 A	35	1			0.7	0.0	1	36	20 A	--	SPARE
CLASSROOM 055 ELEC SHADES	12	20 A	37	1	0.8	0.0		1	38	20 A	--	SPARE	
SPARE	12	20 A	39	1			0.0	0.0	1	40	20 A	--	SPARE
SPARE	12	20 A	41	1			0.0	0.0	1	42	20 A	--	SPARE

LOAD Connected Load Demand Factor Estimated Demand NOTES:

LIGHTS 0 VA 0.00% 0 VA 1. BREAKER FRAME SHALL BE AS REQ'D PER PANEL AIC RATING.
HEATING 165 VA 100.00% 165 VA 2. SHALL BE FULLY RATED - SERIES RATINGS NOT ALLOWED.
COOLING 0 VA 0.00% 0 VA 3. ALL BUSSING, INCL GND AND NEUTRAL, SHALL BE COPPER.
VENTILATION 0 VA 0.00% 0 VA 4. ALL INCOMING PANEL & BRKR LUGS SHALL MATCH FEEDERS.
MOTORS 0 VA 0.00% 0 VA 5. PROVIDE HINGED DOOR-IN-DOOR WITH OUTER DOOR LOCK.
KITCHEN 0 VA 0.00% 0 VA