

Outdoor Events Shelter

Pre-Proposal Conference

December 9, 2014, 2:00 PM

Cone Center - Room 208

Meeting Agenda

PART I - General

- Welcome
- Introductions
- **Questions:**
dschauble@uncc.edu
- **Updates:**
facilities.uncc.edu/advertisements
- HUB and Small Business Enterprises are encouraged to participate.

PART II - Submittal

- Submittal and Selection Dates
- CM@R Qualifications

PART III - Project

- Budget
- Schedule
- Project Overview
- CM@R Questions

Selection Schedule

- Proposal Due Date December 18 at **2:00 PM**
- Shortlisting planned for January, 6, 2015
- CM@R Interviews planned for January 9, 2015
- CM@R Selection anticipated on January 12, 2015

CM@R Qualifications

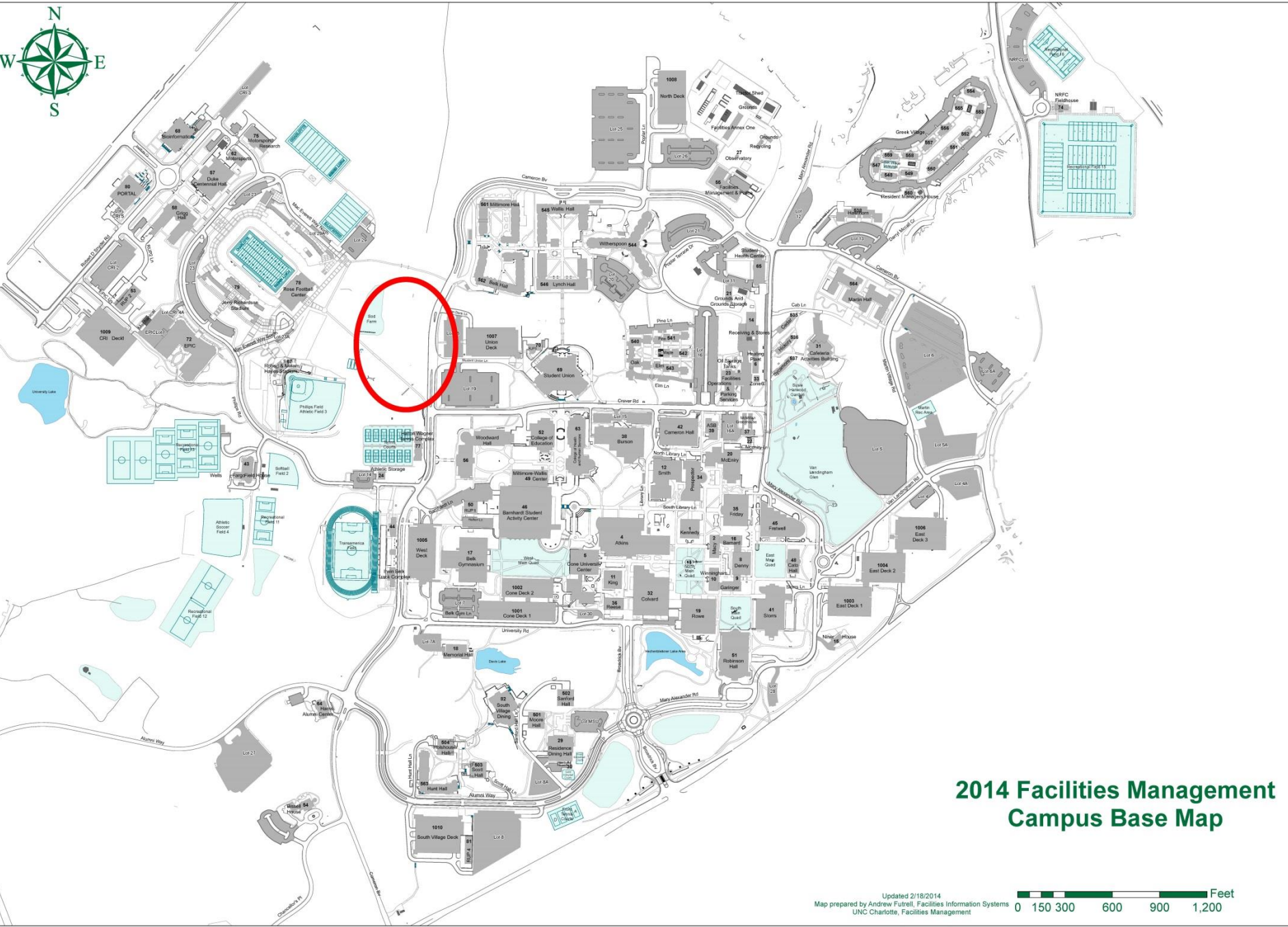
- Experience with Pre-engineered buildings
- Experience with Fast Track Delivery
- Project Completion by mid-August 2015

Project Budget

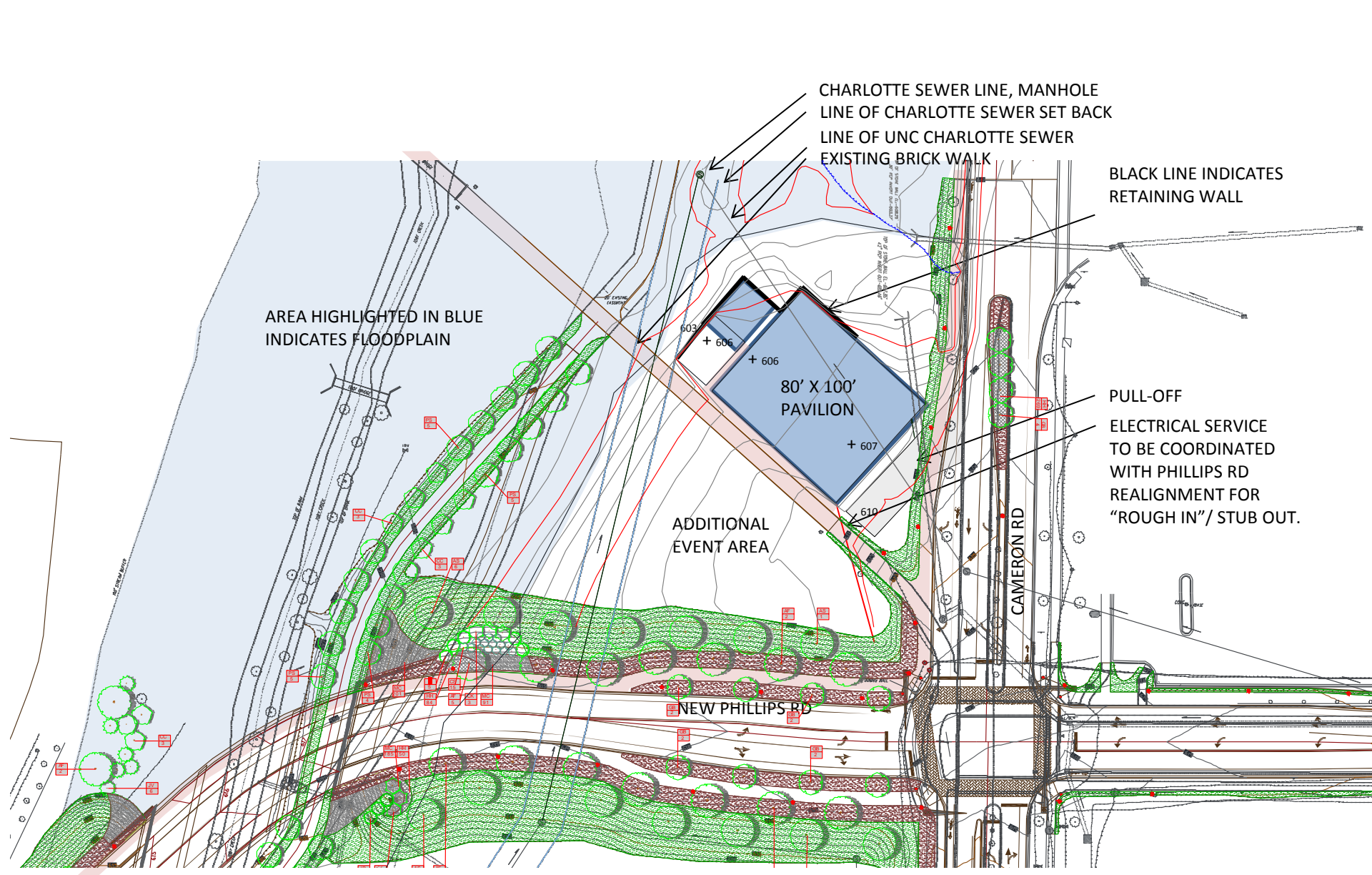
- Project Budget: \$1,000,000 including soft costs
- COW: \$886,000

Project Overview

- 8,000 s.f. Pre-Engineered Shelter
- Pre-Engineered Brick Clad Restroom Building
- Site Work:
 - Retaining Walls
 - Paved Drive



2014 Facilities Management Campus Base Map



CHARLOTTE SEWER LINE, MANHOLE
LINE OF CHARLOTTE SEWER SET BACK
LINE OF UNC CHARLOTTE SEWER
EXISTING BRICK WALK

BLACK LINE INDICATES
RETAINING WALL

AREA HIGHLIGHTED IN BLUE
INDICATES FLOODPLAIN

80' X 100'
PAVILION

ADDITIONAL
EVENT AREA

PULL-OFF
ELECTRICAL SERVICE
TO BE COORDINATED
WITH PHILLIPS RD
REALIGNMENT FOR
"ROUGH IN"/ STUB OUT.

NEW PHILLIPS RD

CAMERON RD

QUESTIONS ?