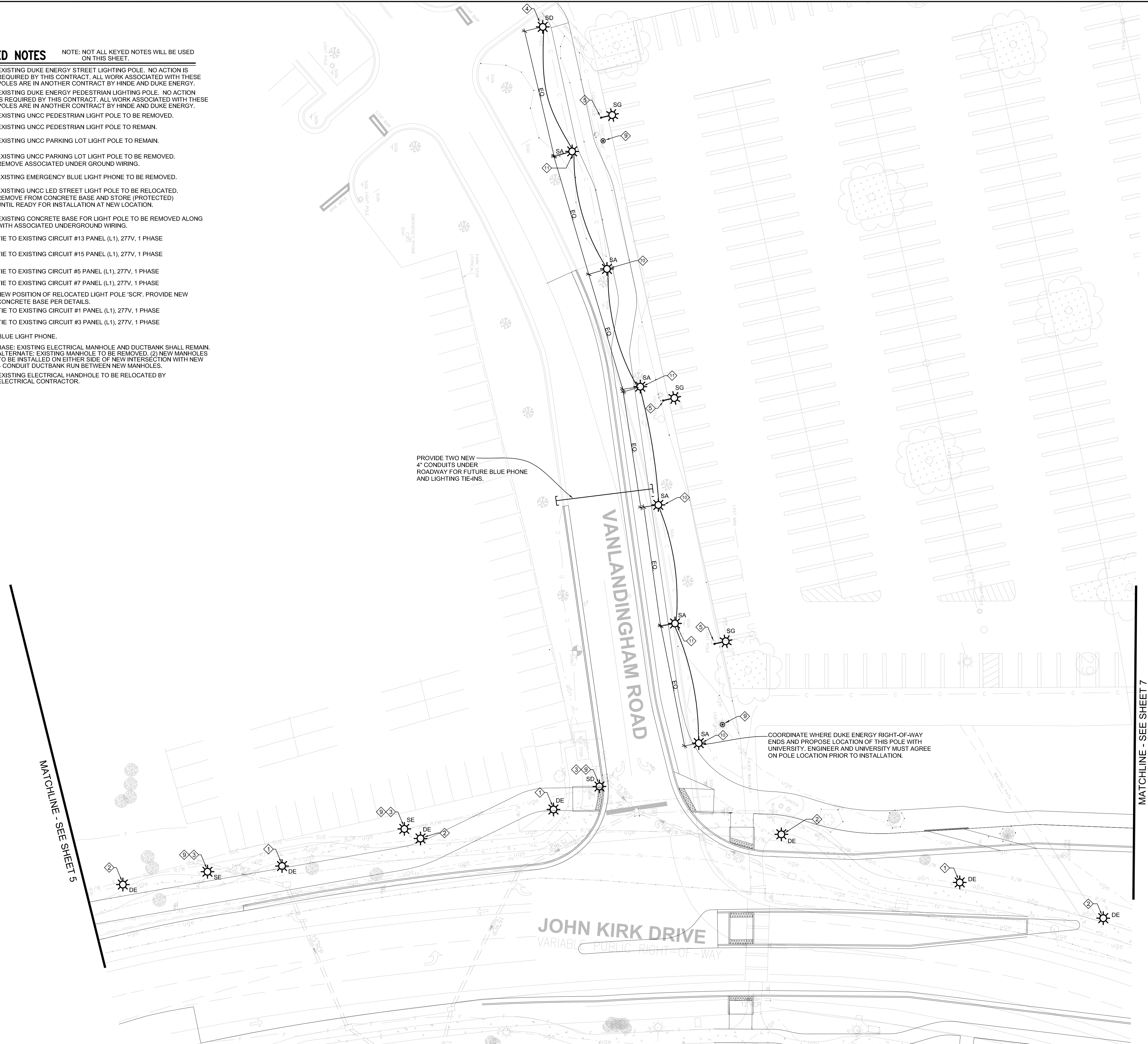
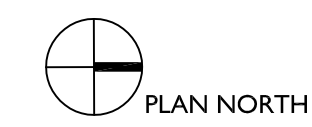
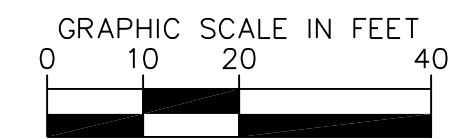


**KEYED NOTES** NOTE: NOT ALL KEYED NOTES WILL BE USED ON THIS SHEET.

- ◇ EXISTING DUKE ENERGY STREET LIGHTING POLE. NO ACTION IS REQUIRED BY THIS CONTRACT. ALL WORK ASSOCIATED WITH THESE POLES ARE IN ANOTHER CONTRACT BY HINDE AND DUKE ENERGY.
- ◇ EXISTING DUKE ENERGY PEDESTRIAN LIGHTING POLE. NO ACTION IS REQUIRED BY THIS CONTRACT. ALL WORK ASSOCIATED WITH THESE POLES ARE IN ANOTHER CONTRACT BY HINDE AND DUKE ENERGY.
- ◇ EXISTING UNCC PEDESTRIAN LIGHT POLE TO BE REMOVED.
- ◇ EXISTING UNCC PEDESTRIAN LIGHT POLE TO REMAIN.
- ◇ EXISTING UNCC PARKING LOT LIGHT POLE TO REMAIN.
- ◇ EXISTING UNCC PARKING LOT LIGHT POLE TO BE REMOVED. REMOVE ASSOCIATED UNDER GROUND WIRING.
- ◇ EXISTING EMERGENCY BLUE LIGHT PHONE TO BE REMOVED.
- ◇ EXISTING UNCC LED STREET LIGHT POLE TO BE RELOCATED. REMOVE FROM CONCRETE BASE AND STORE (PROTECTED) UNTIL READY FOR INSTALLATION AT NEW LOCATION.
- ◇ EXISTING CONCRETE BASE FOR LIGHT POLE TO BE REMOVED ALONG WITH ASSOCIATED UNDERGROUND WIRING.
- ◇ TIE TO EXISTING CIRCUIT #13 PANEL (L1), 277V, 1 PHASE
- ◇ TIE TO EXISTING CIRCUIT #15 PANEL (L1), 277V, 1 PHASE
- ◇ TIE TO EXISTING CIRCUIT #5 PANEL (L1), 277V, 1 PHASE
- ◇ TIE TO EXISTING CIRCUIT #7 PANEL (L1), 277V, 1 PHASE
- ◇ NEW POSITION OF RELOCATED LIGHT POLE 'SCR'. PROVIDE NEW CONCRETE BASE PER DETAILS.
- ◇ TIE TO EXISTING CIRCUIT #1 PANEL (L1), 277V, 1 PHASE
- ◇ TIE TO EXISTING CIRCUIT #3 PANEL (L1), 277V, 1 PHASE
- ◇ BLUE LIGHT PHONE.
- ◇ BASE: EXISTING ELECTRICAL MANHOLE AND DUCTBANK SHALL REMAIN. ALTERNATE: EXISTING MANHOLE TO BE REMOVED. (2) NEW MANHOLES TO BE INSTALLED ON EITHER SIDE OF NEW INTERSECTION WITH NEW 4 CONDUIT DUCTBANK RUN BETWEEN NEW MANHOLES.
- ◇ EXISTING ELECTRICAL HANDHOLE TO BE RELOCATED BY ELECTRICAL CONTRACTOR.



PROVIDE TWO NEW 4" CONDUITS UNDER ROADWAY FOR FUTURE BLUE PHONE AND LIGHTING TIE-INS.

COORDINATE WHERE DUKE ENERGY RIGHT-OF-WAY ENDS AND PROPOSE LOCATION OF THIS POLE WITH UNIVERSITY. ENGINEER AND UNIVERSITY MUST AGREE ON POLE LOCATION PRIOR TO INSTALLATION.

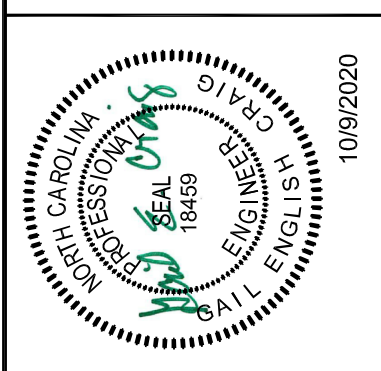
MATCHLINE - SEE SHEET 5

MATCHLINE - SEE SHEET 7

No.	REVISIONS	DATE	BY

**CMTA**  
 8801 Lark Meadow Dr. Suite 200, Charlotte, NC 28226  
 704.276.9072 cmta.com  
 C-4556

BID SET



MC&L PROJECT	217,069
DATE	10/9/2020
SCALE AS SHOWN	DESIGNED BY JRM
DRAWN BY	GEJ
CHECKED BY	GEC

**UNC CHARLOTTE**  
 9201 UNIVERSITY CITY BOULEVARD  
 CHARLOTTE, NC 28223

**ELECTRICAL PLANS**

THE UNIVERSITY OF NORTH CAROLINA AT CHARLOTTE  
 EAST VILLAGE  
 INFRASTRUCTURE  
 PROJECT ID #13-11004-02A

