

Campus Circulation Improvements



Thursday, March 17, 2016
Pre-Proposal Conference

Meeting Agenda

Part I: General, Part II: Submittal, Part III: Project

I. General

- Welcome
- Introductions
- **Questions:** efrere@uncc.edu
- **Updates:** facilities.uncc.edu/advertisements
- Last date to submit questions is March 22nd at noon
- Final Addendum posted no later than March 24th
- HUB & Small Business Enterprise are not considerations for designer selection



Meeting Agenda

II. Submittal

- Schedule
- Format
 - Organization
- Selection Criteria

III. Project Overview

- Project Budget & Intent
- General Information & Program
- Key Challenges
- Site
- Designer Questions
- Optional Site Visit



Submittal

Schedule

- Proposal Due Date March 31st at **2:00 PM**
- Shortlisting to be complete by early-April, interviews with selected firms will be on the morning of April 14, 2016
- Projected Notice to Proceed Date April 21, 2016
- Complete of Advance Planning by mid-June 2016
- Completion of all Design approvals and contract documents by November 15, 2016
- Construction Schedule: December 2016 – July 2017
- Note: This is an Advance Planning Submittal with option to retain firm for full design services



Submittal

Format

- No larger than 12 ½” in height x 9 ½” in width
- Provide five (5) printed copies & one (1) digital copy
- 40 page limit (20 double sided)
 - Page limit includes all printed pages, but not covers, tabs, clear covers, blank pages, cardstock backs, etc.
 - Page count will be derived from digital copy, so omit all blank pages from the digital version



Submittal

Organization

- Provide Information in the following Order:
 - A. Required Submittal Cover Sheet
 - B. Designer's Supplemental Information Form (or Designer's Staffing Information Form)
 - C. Cover letter (optional)
 - D. SF330 Part I & II (Make sure to fully complete and submit both parts!)

NOTE: PLEASE USE **BOLD FONT** FOR ALL **SQUARE FOOTAGE COSTS!**
 - E. Supplemental Information organized into ten categories with subheadings matching the ten Designer Selection Criteria



Submittal

Selection Criteria

- Submittals must clearly provide information for each category below utilizing the numbering system and categories for the submittal subtitles.
 - (1) Specialized or appropriate expertise in this type of project.
 - (2) Past performance on similar projects.
 - (3) Adequate staff and proposed design or consultant team for the project.
 - (4) Current workload and State projects awarded.
 - (5) Proposed design approach for the project including design team and consultants.
 - (6) Recent experience with project costs and schedules.
 - (7) Construction administration capabilities.
 - (8) Proximity to and familiarity with the area where project is located.
 - (9) Record of successfully completed projects without major legal or technical problems.
 - (10) Other factors that may be appropriate for the project.



LESS IS MORE



Project Overview

Budget

- Total Budget: \$1M including soft costs (this includes the AP & Design)
- Construction Cost: \$865,000

Intent

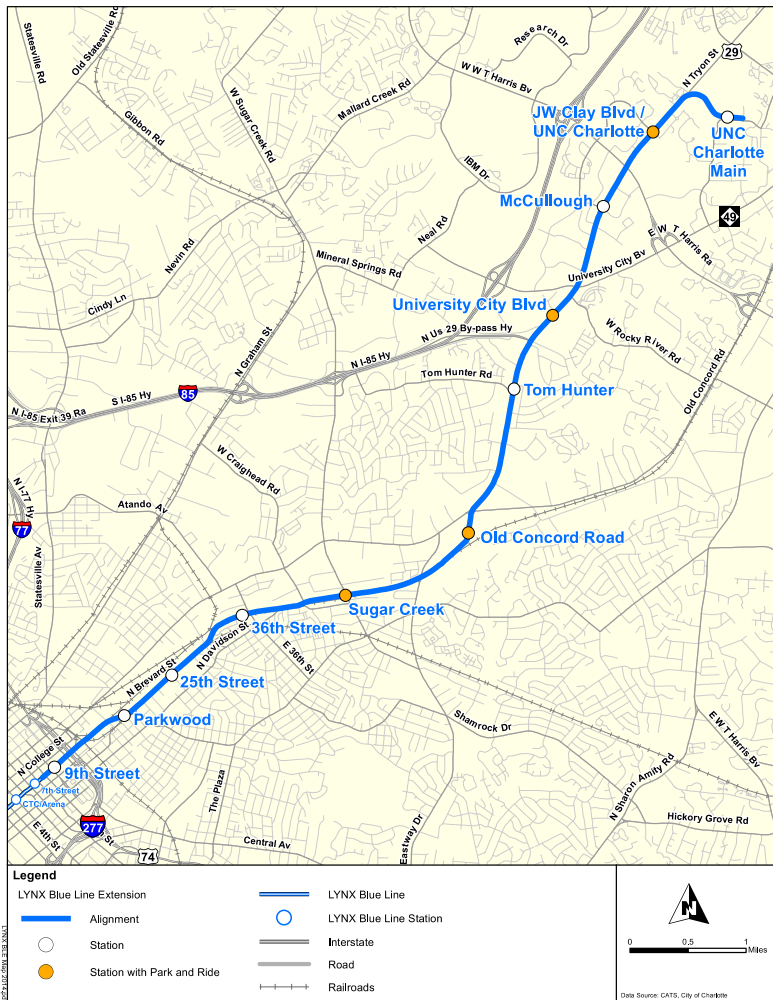
- Improve multimodal access and connections required for Charlotte Area Transit System's (CATS) LYNX Blue Line Extension (BLE) stations that provide direct access to UNC Charlotte
- Wayfinding for preferred routes



Project Overview

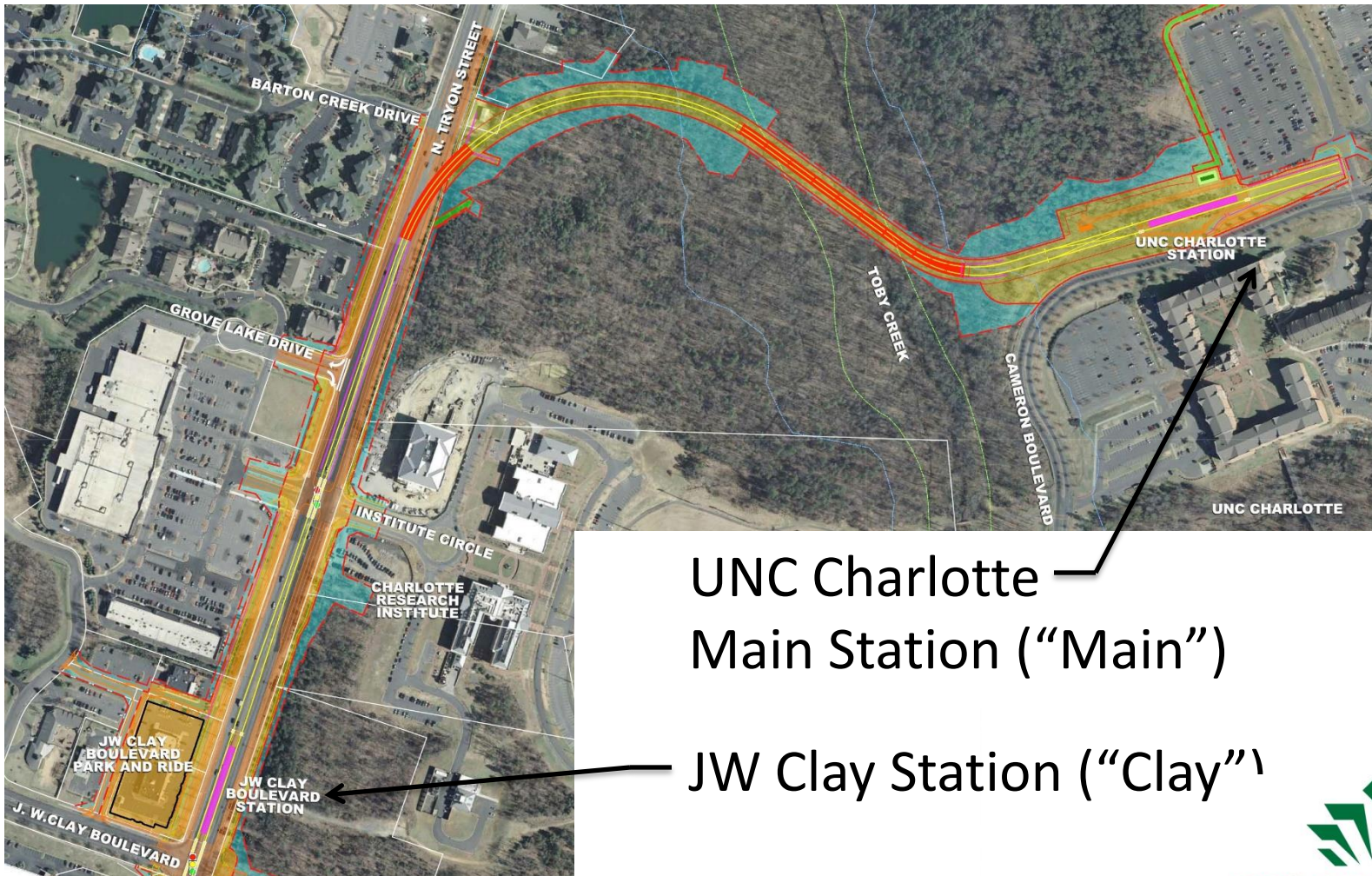
General Information: CATS LYNX Blue Line Extension

- 9.3 mile light rail extension, 11 stations, will provide continuous travel from I-485/South Blvd through Center City to UNC Charlotte
- Currently under construction, scheduled to be operational in 2017



Project Overview

General Information: LYNX BLE Stations



UNC Charlotte
Main Station (“Main”)

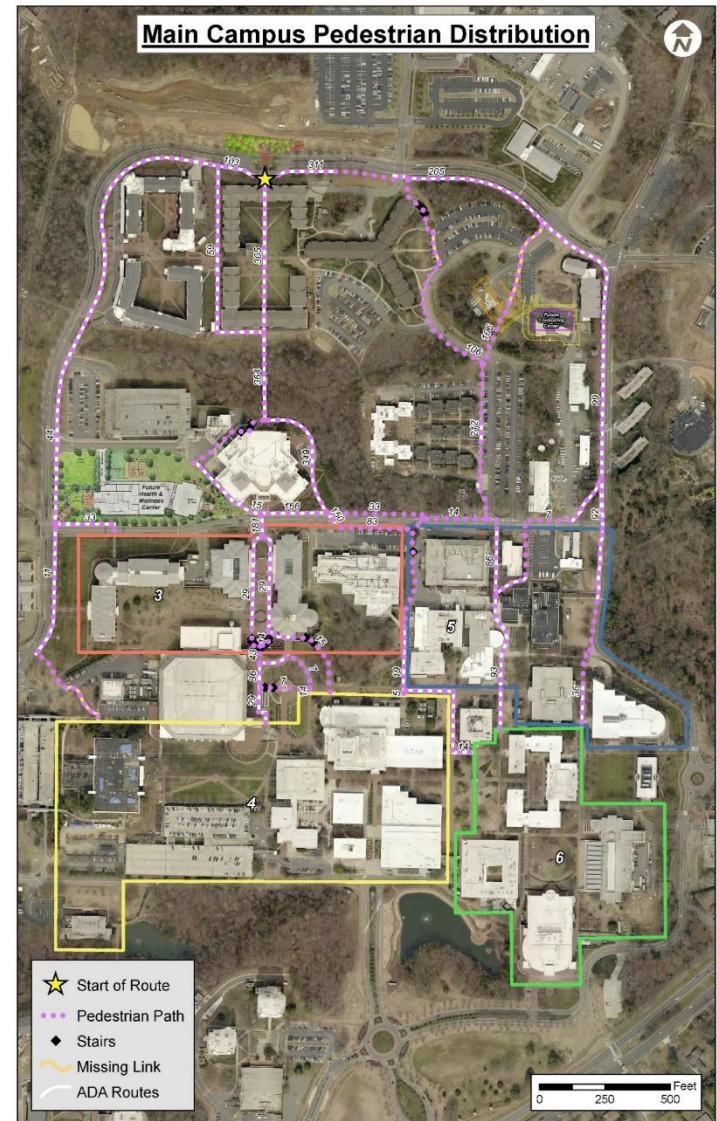
JW Clay Station (“Clay”)



Project Overview

Program: Main Station

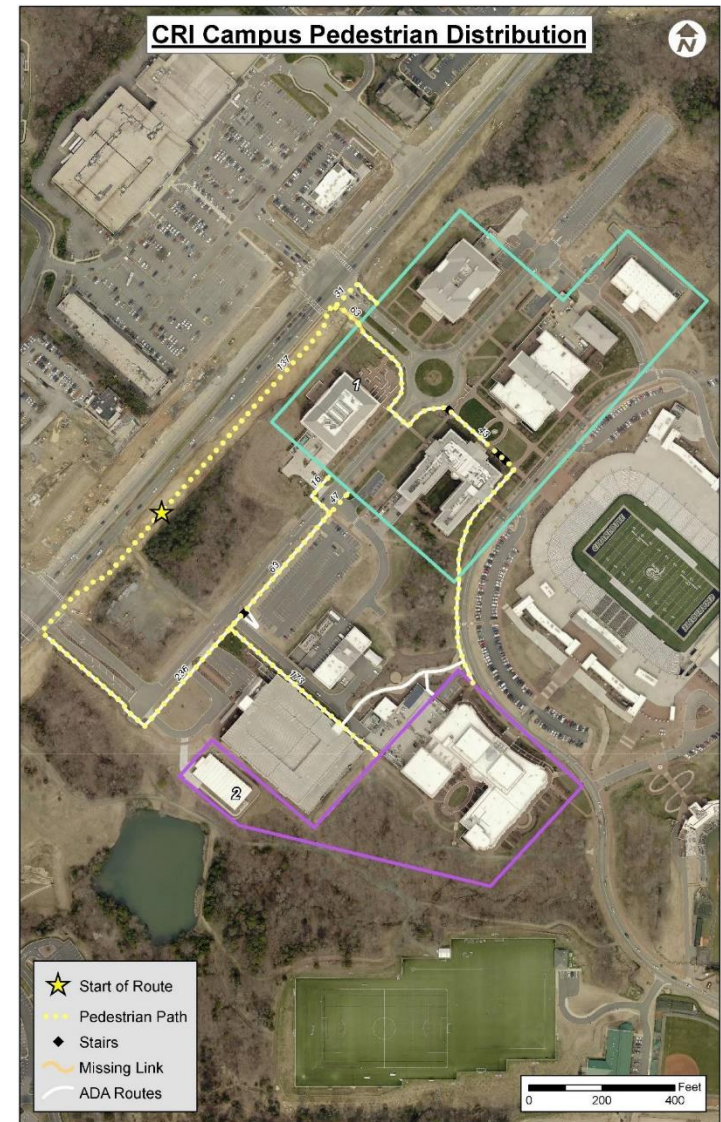
- Total Ridership Anticipation: 4,000 daily riders
- Stairs and ramp system to Lot 25
- Bus pull-off serving both CATS and UNC Charlotte bus lines
- Multiple existing paths with various widths, ranging between 5' and 7' with 24' width at crossing to Wallis



Project Overview

Program: Clay Station

- Total Ridership Anticipation: 2,000 daily riders
- Pedestrian bridge access over N. Tryon St
- Routes are fixed between JW Clay Deck, the Clay platform, and the Campus Tower
- Clay platform has access to N. Tryon St to cross at grade at JW Clay signalized intersection



Project Overview

Key Challenges

- Construction completion to coincide with CATS LYNX Blue Line Extension anticipated completion, in the summer of 2017
- Wayfinding system that guides pedestrian traffic from the Main station to University preferred routes, especially sensitive to deter through traffic in the adjacent residence hall quad spaces
- Site improvements to area in front of Wallis Hall and the Main station to delineate transition between public space , semi-public space, and semi-private spaces
- Pathway upgrades and integration into existing campus circulation, including ADA compliance



QUESTIONS ?

Campus Map

