

# Charlotte Research Institute (CRI) Entrance Improvements



Tuesday, June 21, 2016  
Pre-Proposal Conference

---

# Meeting Agenda

Part I: General, Part II: Submittal, Part III: Project

## I. General

- Welcome
- Introductions
- **Questions:** [efrere@uncc.edu](mailto:efrere@uncc.edu), cc: [jbachtel@uncc.edu](mailto:jbachtel@uncc.edu)
- **Updates:** [facilities.uncc.edu/advertisements](https://facilities.uncc.edu/advertisements)
- Last date to submit questions is June 28<sup>th</sup> at noon
- HUB & Small Business Enterprise are not considerations for designer selection



# Meeting Agenda

## II. Submittal

- Schedule
- Format & Organization
- Selection Criteria

## III. Project Overview

- Project Budget & Intent
- General Information & Program
- Key Challenges
- Designer Questions
- Optional Site Visit



# Submittal

## Schedule

- Proposal Due Date July 7<sup>th</sup> at **2:00 PM**
- Shortlisting to be complete by end of July
- Interviews with selected firms will be in late July
- Projected Notice to Proceed Date: August 2016
- Completion of all Design approvals and contract documents by March 2017
- Construction Schedule: May 2017 – December 2017



# Submittal

## Format

- No larger than 12 ½” in height x 9 ½” in width
- Provide five (5) printed copies & one (1) digital copy
- 40 page limit (20 double sided)
  - Page limit includes all printed pages, but not covers, tabs, clear covers, blank pages, cardstock backs, etc.
  - Page count will be derived from digital copy, so omit all blank pages from the digital version



# Submittal

## Organization

- Provide Information in the following Order:
  - A. Required Submittal Cover Sheet
  - B. Designer's Supplemental Information Form (or Designer's Staffing Information Form)
  - C. Cover letter (optional)
  - D. SF330 Part I & II (Make sure to fully complete and submit both parts!)
  - E. Supplemental Information organized into ten categories with subheadings matching the ten Designer Selection Criteria



# Submittal

## Selection Criteria

- Submittals must clearly provide information for each category below utilizing the numbering system and categories for the submittal subtitles.
  - (1) Specialized or appropriate expertise in this type of project.
  - (2) Past performance on similar projects.
  - (3) Adequate staff and proposed design or consultant team for the project.
  - (4) Current workload and State projects awarded.
  - (5) Proposed design approach for the project including design team and consultants.
  - (6) Recent experience with project costs and schedules.
  - (7) Construction administration capabilities.
  - (8) Proximity to and familiarity with the area where project is located.
  - (9) Record of successfully completed projects without major legal or technical problems.
  - (10) Other factors that may be appropriate for the project.



**LESS IS MORE**



---

UNC CHARLOTTE



# Project Overview

## Budget

- Total Budget: \$1.5M including soft costs (this includes the Design)
- Construction Cost: \$1.1M

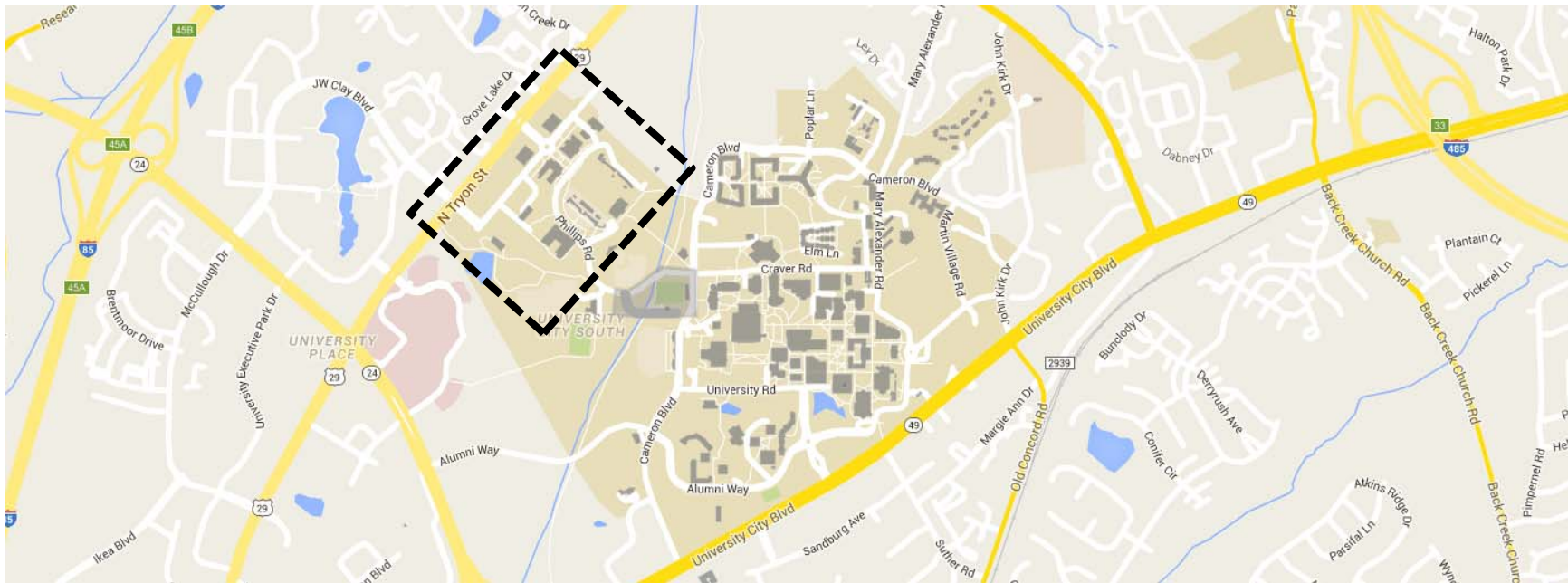
## Intent

- Gateway for UNC Charlotte with a strong presence on N. Tryon St. that is easily identifiable



# Project Overview

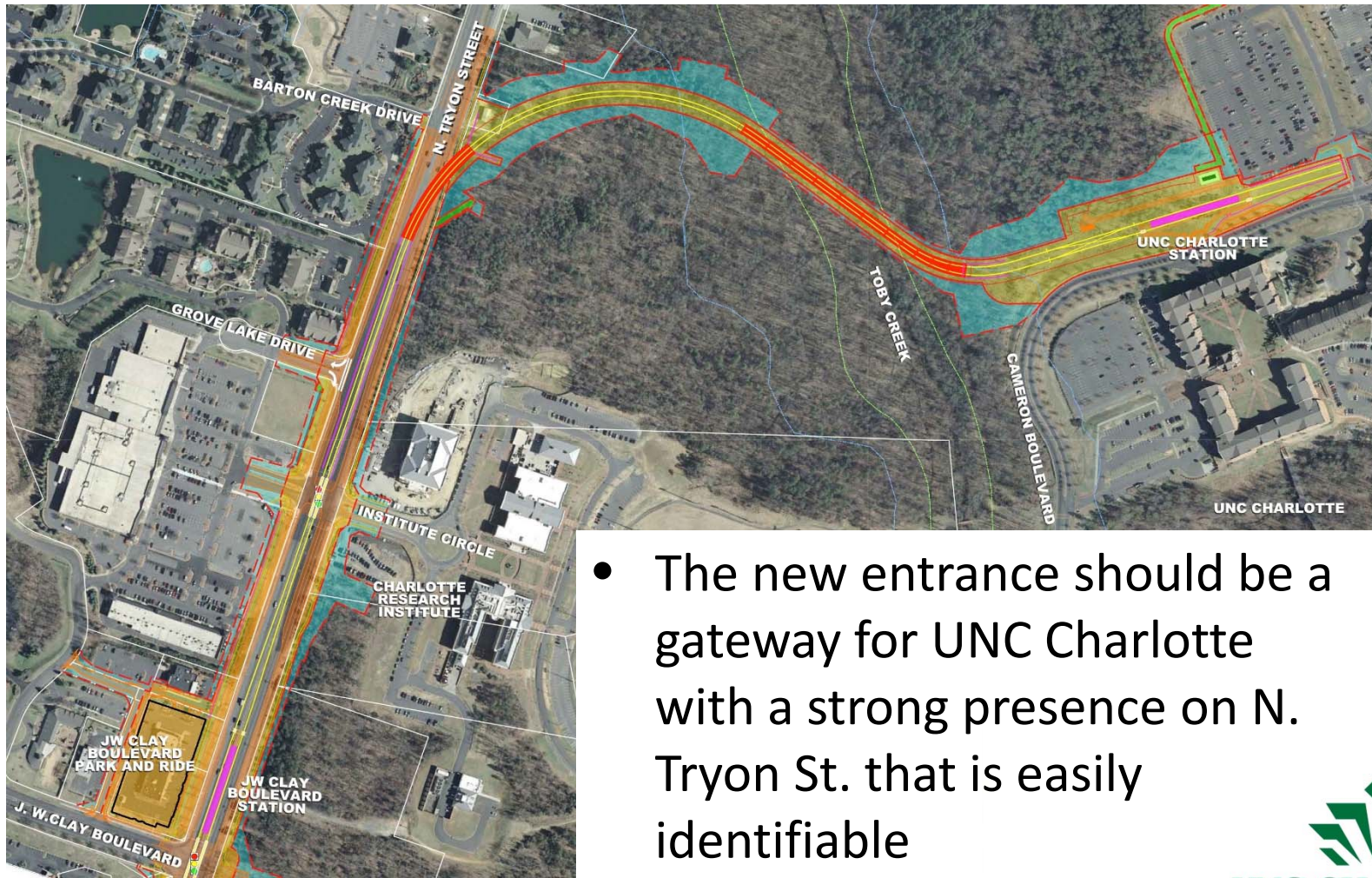
## General Information: Charlotte Research Institute



- The entrance serves as the face of the University for the new piece of public infrastructure (BLE)
  - Cohesive incorporation of a grand entrance monument, major grade changes, and various site features will require a timeless design approach
  - The project is located on a high-profile edge of campus that will be viewed from all directions and create an identity for the University
-

# Project Overview

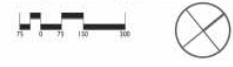
## General Information: BLE Proximity



- The new entrance should be a gateway for UNC Charlotte with a strong presence on N. Tryon St. that is easily identifiable

# Project Overview

## Program: Major Site Axis



# Project Overview

## Program: Concept Diagram



# Project Overview

## Key Challenges

- Construction completion by December 2017
- Improvements including site structures and monuments must be designed with project budget in mind
- 360 degree views
- Pathway upgrades and integration into existing campus circulation, including ADA compliance



**QUESTIONS ?**