



Popp Martin Student Dining Renovation Construction Manager at Risk

CMR PRE-SUBMITTAL CONFERENCE 10.21.2021



UNC CHARLOTTE

MEETING AGENDA

PART I: GENERAL INFORMATION

PART II: SUBMITTAL REQUIREMENTS

PART III: PROJECT OVERVIEW

PART IV: QUESTIONS



GENERAL

- WELCOME
- INTRODUCTIONS

Amanda Caudle

OFFICE PHONE: 704-687-0534

EMAIL: AFELOCK@UNCC.EDU

- UPDATES & THIS PRESENTATION WILL BE POSTED AT THIS WEBSITE -

[HTTP://FACILITIES.UNCC.EDU/ADVERTISEMENTS](http://FACILITIES.UNCC.EDU/ADVERTISEMENTS)



SCHEDULE

- **SUBMITTAL DUE:** NOVEMBER 4, 2021 AT 2:00 PM
- **SHORTLISTING COMPLETE:** mid NOVEMBER 2021
- **INTERVIEWS SCHEDULED:** early DECEMBER 2021
- **PRECONSTRUCTION SERVICES BEGIN:** DECEMBER 15, 2021



SUBMITTAL FORMAT

- NO LARGER THAN 12 ½" HEIGHT X 9 ½" WIDTH
 - PROVIDE **FIVE (5)** PRINTED COPIES & **ONE (1)** DIGITAL
 - **40 PAGE LIMIT** (OR 20 DOUBLE SIDED PAGES)
 - DOES NOT INCLUDE: COVERS, TABS, BLANK PAGES, CARDSTOCK BACKS, ETC.
 - PAGE COUNT DERIVED FROM DIGITAL COPY, OMIT ALL BLANK PAGES FROM DIGITAL VERSION
 - SF 330 IS REQUIRED FOR PORTIONS OF THE SUBMITTAL
DOWNLOAD AT [HTTP://WWW.GSA.GOV/PORTAL/FORMS/DOWNLOAD/116486](http://www.gsa.gov/portal/forms/download/116486)
-

SUBMITTAL FORMAT (con't)

I. OPTIONAL COVER LETTER

II. TABLE OF CONTENTS

III. QUALIFICATIONS QUESTIONNAIRE

✓ PROFILE OF PROPOSER

✓ PROJECT EXPERIENCE

✓ KEY PERSONNEL – USE SF 330

✓ PROJECT PLANNING

✓ ATTACHMENTS – PROVIDE IN THE FOLLOWING
ORDER;



SUBMITTAL FORMAT (con't)

ATTACHMENT A – COPY OF NC CONTRACTOR'S LICENSE

ATTACHMENT B – LETTER FROM SURETY COMPANY

ATTACHMENT C – SWORN STATEMENT (LISTED PERSONNEL WILL BE EXCLUSIVELY ASSIGNED TO THIS PROJECT FOR THE DURATION)

ATTACHMENT D – RESUMES (USE SF 330)

ATTACHMENT E – ORGANIZATIONAL CHART

FINANCIALS – TO BE SUBMITTED SEPARATELY IN A SEALED ENVELOPE AS A SINGLE COPY



CMR REQUIREMENTS

SUB-CONTRACTOR PRE-QUALIFICATION – TWO (2) FORM PROCESS -

[HTTPS://NCADMIN.NC.GOV/BUSINESSES/CONSTRUCTION/FOR
MS-DOCUMENTS](https://ncadmin.nc.gov/businesses/construction/form-process)

- APPEALS PROCEDURE REQUIRES PRE-QUALIFICATION TO BE MOVED FURTHER AHEAD IN THE SCHEDULE (TO ALLOW ADEQUATE TIME FOR APPEALS PRIOR TO BIDDING)

HUB PARTICIPATION

- CMR WILL ESTABLISH THE GOAL FOR THIS PROJECT PER THEIR ASSESSMENT OF THE SUBCONTRACTOR MARKET AND AVAILABILITY (MINIMUM IS 10%)



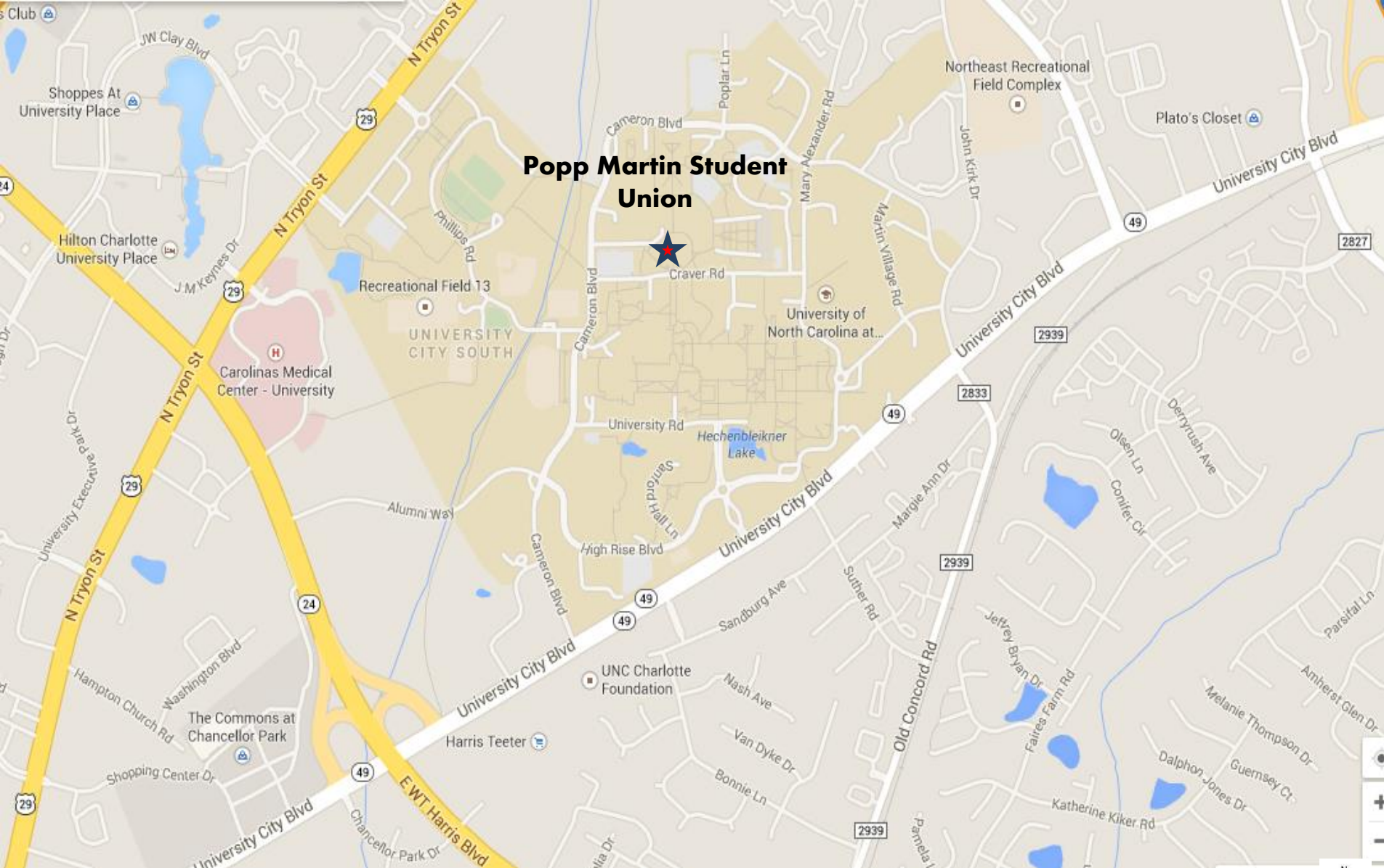
PROJECT OVERVIEW

BUDGET – \$7,500,000 ANTICIPATED CONSTRUCTION COSTS

SCOPE –

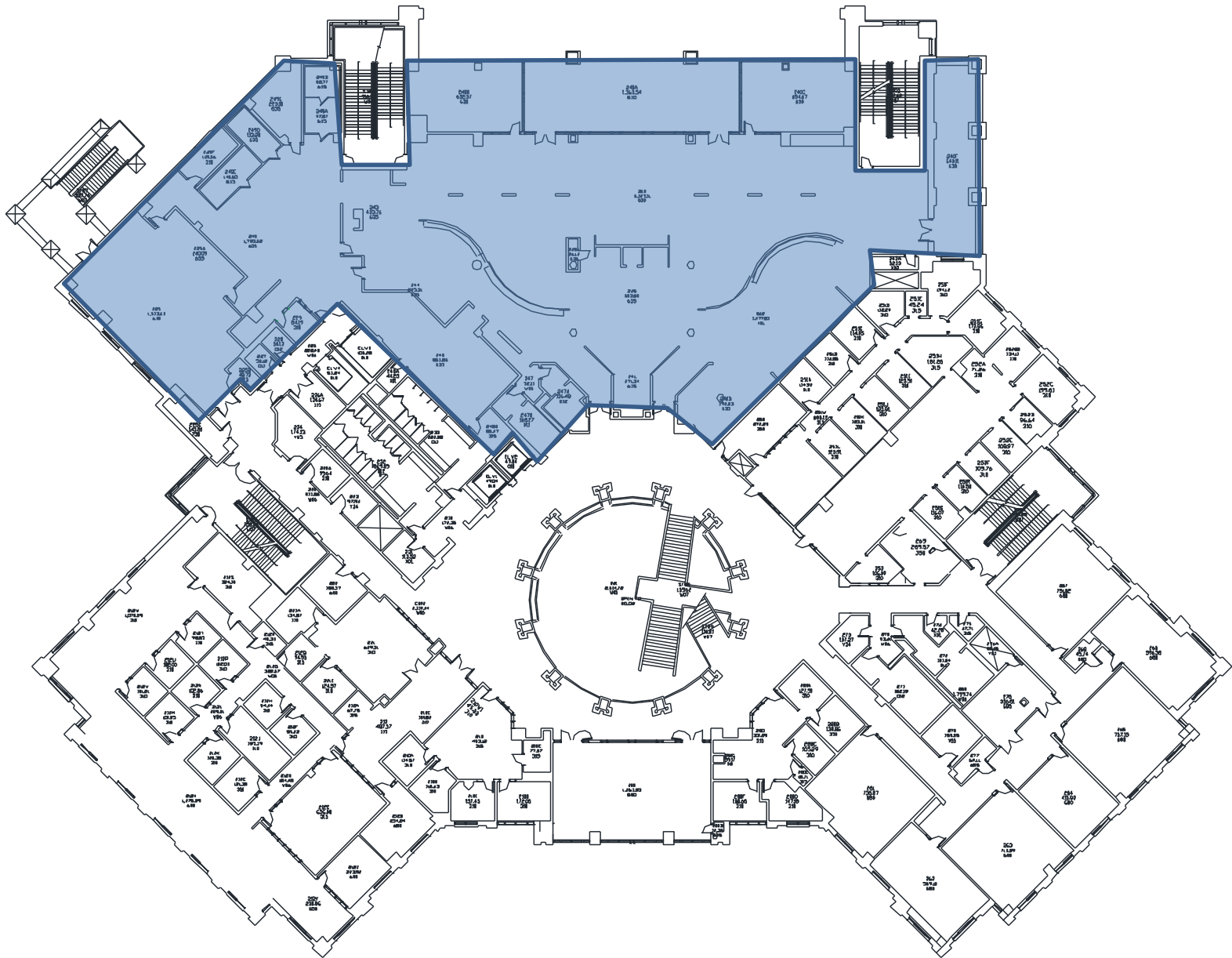
- Crown Commons is an all-you-care-to-eat dining venue in the Popp Martin Student Union. The project will replace food service equipment, finishes, lighting, and furniture. This is a complete renovation to the space with utilities relocated to accommodate the new layout.
- Phase 1 construction over 6 weeks between December 2022/January 2023.
- Phase 2 construction over summer 2023 (May, June, July).





Popp Martin Student Union

SITE LOCATION



Popp Martin Student Union - LEVEL 2

QUESTIONS?



UNC CHARLOTTE