

C design Inc.

1000 West Morehead Street
Suite 170
Charlotte, NC 28208
t 704.333.0093
f 704.333.0083
www.cdesigninc.com



BELK GYMNASIUM
RENOVATION

9201 University City Blvd.
Charlotte, NC 28223

Donia Schauble
704-687-0520

PROJECT INFORMATION

CONSULTANTS

C DESIGN INC. MAKES NO REPRESENTATION AS TO THE ACCURACY OF THE INFORMATION CONTAINED HEREIN AS THESE DRAWINGS ARE BASED IN PART UPON THE REPRESENTATIONS OF OTHERS AND ARE NOT FOR BIDDING, PROCUREMENT, PERMIT OR CONSTRUCTION PURPOSES

L. JOSEPH HUMPHREY, AIA
copyright 2016, C design Inc.

REV.	DATE	DESCRIPTION
1	05.13.2014	ADDENDUM 1
2	06.20.2014	BULLETIN 1
3	10.14.2014	BULLETIN 6
4	12.05.2014	BULLETIN 8
5	01.02.2015	BULLETIN 9
6	05.18.2015	BULLETIN 11

SEALS

REVISIONS

KEY PLAN

Plan North
SCO ID# 12-09471-03A
PROJECT NUMBER 0604-0278
DATE 09.30.2016

GROUND FLOOR
DIMENSION PLAN

RECORD DOCUMENTS

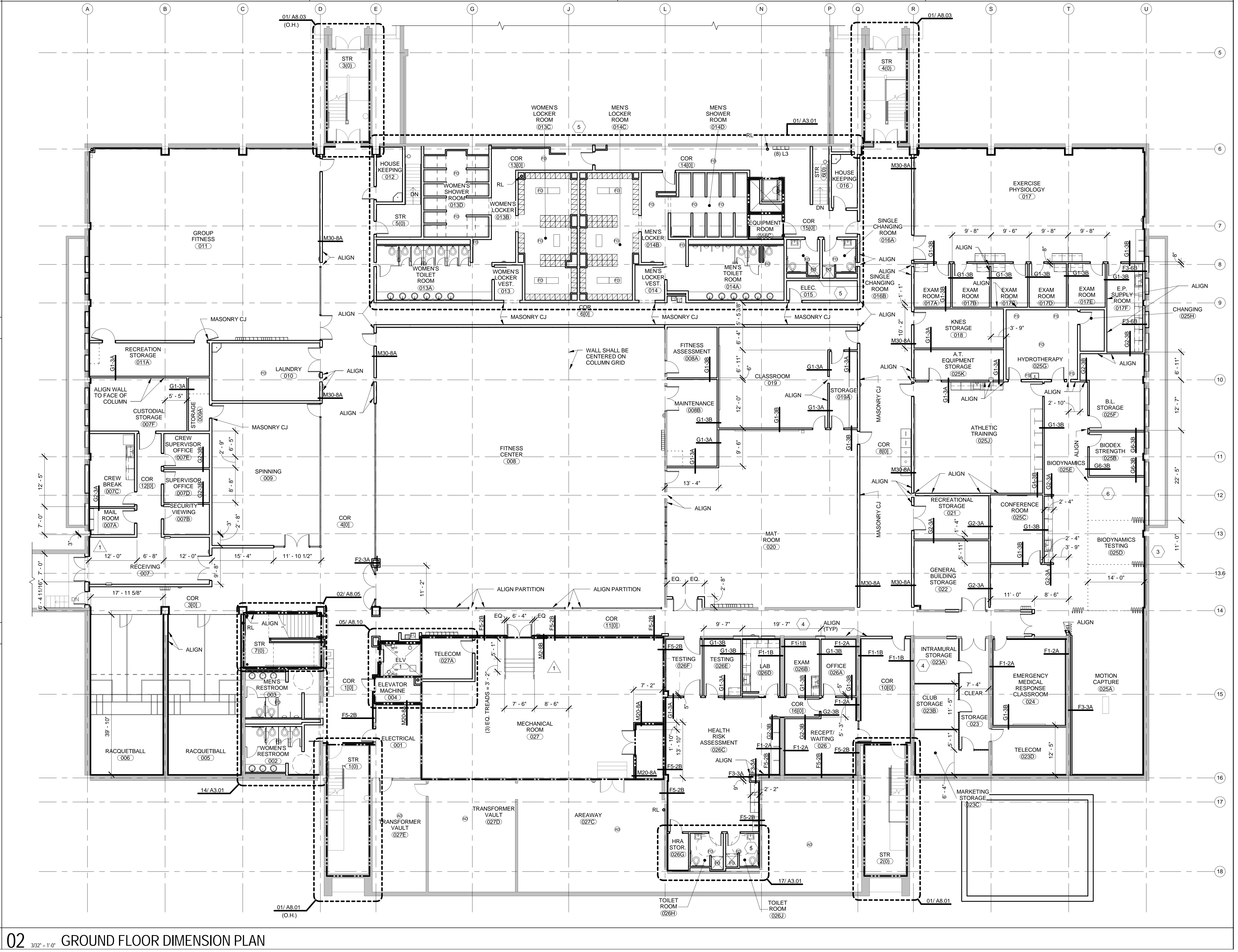
A1.00-1

1. PARTITIONS ARE DIMENSIONED FROM GRID LINE TO FINISH FACE OR FROM FINISH FACE TO FINISH FACE (U.N.O.)
2. ALL DIMENSIONS SHALL BE FIELD VERIFIED
3. ALL PARTITIONS TO BE M2-8B. (U.N.O.)
4. ALL INTERIOR COLUMN ENCLOSURES TO BE F3-3A. (U.N.O.)
5. ALL PERIMETER WALLS TO RECEIVE F5-2B PARTITION (U.N.O.)

	EXISTING CONSTRUCTION / PARTITION TO REMAIN
	NEW CONSTRUCTION / PARTITION
	1 HOUR RATED SEPARATION
	2 HOUR RATED SEPARATION
	WIRE MESH PARTITION

19 NTS GROUND FLOOR DIM. PLAN NOTES

20 NTS GROUND FLOOR DIM. PLAN LEGEND



02 332'-11"0" GROUND FLOOR DIMENSION PLAN