

RESIDENCE HALL PHASE XVI

The University of North Carolina at Charlotte

PRE-PROPOSAL CONFERENCE | 11.13.2017



UNC CHARLOTTE

M E E T I N G A G E N D A

PART I: GENERAL INFORMATION

PART II: SUBMITTAL REQUIREMENTS

PART III: PROJECT OVERVIEW

PART IV: QUESTIONS

PRE-PROPOSAL CONFERENCE | 11.13.2017



UNC CHARLOTTE

G E N E R A L

- WELCOME

- INTRODUCTIONS

- QUESTIONS:

ELIZABETH FRERE, PROJECT MANAGER

OFFICE PHONE: 704-687-0558

EMAIL: EFRE@UNCC.EDU

- UPDATES:

FACILITIES.UNCC.EDU/ADVERTISEMENTS



S U B M I T T A L

SCHEDULE

- PROPOSAL DUE DATE: NOVEMBER 28TH AT 2:00 PM
- SHORTLISTING TO BE COMPLETE BY EARLY DECEMBER
- INTERVIEWS WITH SELECTED FIRMS ARE SCHEDULED FOR MID-DECEMBER 15TH - 20TH 2017
- PROJECTED NOTICE TO PROCEED DATE FOR RESIDENCE HALL PHASE XVI ADVANCE PLANNING JANUARY 2018
- COMPLETE ADVANCE PLANNING, SD, DD, & CD SUBMITTALS BY JANUARY 2019

NOTE: THIS IS AN ADVANCE PLANNING SUBMITTAL WITH OPTION TO RETAIN FIRM FOR FULL DESIGN SERVICES



S U B M I T T A L

FORMAT

- NO LARGER THAN 12 ½” HEIGHT X 9 ½” WIDTH
- PROVIDE FIVE (5) PRINTED COPIES & ONE (1) DIGITAL COPY
- 50 PAGE LIMIT (OR 25 DOUBLE SIDED PAGES)
- PAGE LIMIT INCLUDES ALL PRINTED PAGES (BUT NOT COVERS, TABS, CLEAR COVERS, BLANK PAGES, CARDSTOCK BACKS, ETC.)
- PAGE COUNT IS DERIVED FROM DIGITAL COPY, SO PLEASE OMIT ALL BLANK PAGES FROM THE DIGITAL VERSION



S U B M I T T A L

ORGANIZATION

PROVIDE INFORMATION IN THE FOLLOWING ORDER:

- REQUIRED SUBMITTAL COVER SHEET
- DESIGNER'S SUPPLEMENTAL INFORMATION FORM (OR DESIGNER'S STAFFING INFORMATION FORM)
- COVER LETTER (OPTIONAL)
- SF330 PART I & II (MAKE SURE TO FULLY COMPLETE AND SUBMIT BOTH PARTS)

NOTE: PLEASE USE **BOLD FONT** FOR ALL PROJECT COSTS

- SUPPLEMENTAL INFORMATION ORGANIZED INTO TEN CATEGORIES WITH SUBHEADINGS MATCHING THE TEN DESIGNER SELECTION CRITERIA



S U B M I T T A L

SELECTION CRITERIA

SUBMITTALS MUST CLEARLY PROVIDE INFORMATION FOR EACH CATEGORY BELOW UTILIZING THE NUMBERING SYSTEM AND CATEGORIES FOR THE SUBMITTAL SUBTITLES:

- (1) SPECIALIZED OR APPROPRIATE EXPERTISE IN THIS TYPE OF PROJECT.
- (2) PAST PERFORMANCE ON SIMILAR PROJECTS, PREFERABLY NEW CONSTRUCTION OF RESIDENCE HALLS FOR HIGHER EDUCATION.
- (3) ADEQUATE STAFF AND PROPOSED DESIGN OR CONSULTANT TEAM FOR THE PROJECT.
- (4) CURRENT WORKLOAD AND STATE PROJECTS AWARDED.
- (5) PROPOSED DESIGN APPROACH FOR THE PROJECT INCLUDING DESIGN TEAM AND CONSULTANTS.
- (6) RECENT EXPERIENCE WITH PROJECT COSTS AND SCHEDULES.
- (7) CONSTRUCTION ADMINISTRATION CAPABILITIES.
- (8) PROXIMITY TO AND FAMILIARITY WITH THE AREA WHERE PROJECT IS LOCATED.
- (9) RECORD OF SUCCESSFULLY COMPLETED PROJECTS WITHOUT MAJOR LEGAL OR TECHNICAL PROBLEMS.
- (10) OTHER FACTORS THAT MAY BE APPROPRIATE FOR THE PROJECT, FOR EXAMPLE EXPERIENCE WITH DESIGN OF HIGH RISE DEMOLITION AND ABATEMENT.



PROJECT OVERVIEW

BUDGET

- THE TOTAL BUDGET IS \$55.4M, WHICH INCLUDES DESIGN SUPPORT SERVICES FOR DEMO & ABATEMENT, DESIGN FEES, FURNISHINGS, LANDSCAPING, CONSTRUCTION, AND ANY OFF-SITE UTILITY INFRASTRUCTURE
- ESTIMATED CONSTRUCTION BUDGET IS \$45M
- 750-800 TOTAL BEDS
- 5-6 FLOORS (PER BUILDING)
- PROJECT WILL BE CONNECTED TO RUP 4
- FIRMS NEED TO INDICATE STAFF PRIME PROJECT MANAGER AND TEAM WHO WILL BE WORKING ON DEMO PLANS AND AP CONSECUTIVELY



PROJECT OVERVIEW

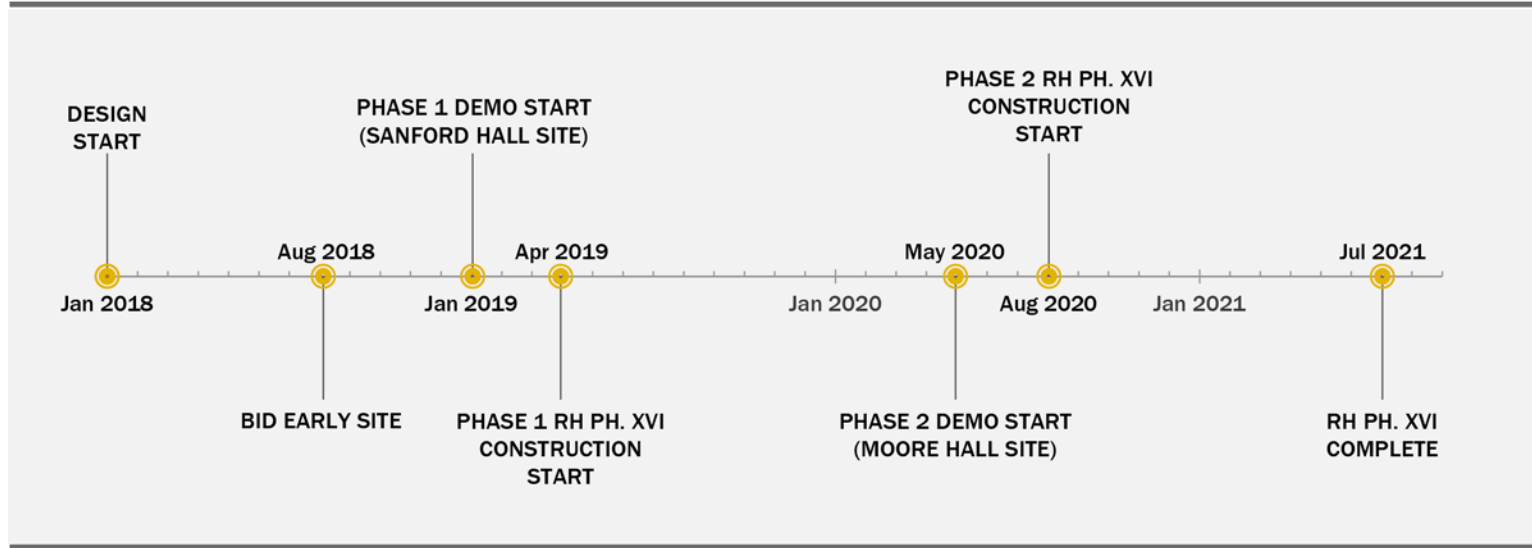
SCHEDULE

- AP & DEMO DESIGN BEGIN JANUARY 2018
- EARLY SITE PACKAGE FOR DEMO & ABATEMENT:
 - BID AUGUST 2018
 - PHASE 1 DEMO (SANFORD HALL SITE) JANUARY 2019 – APRIL 2019
 - PHASE 2 DEMO (MOORE HALL SITE) MAY 2020 – AUGUST 2020
- PH XVI CD'S COMPLETE JANUARY 2019
- PHASE 1 RH PH XVI CONSTRUCTION (SANFORD HALL SITE) APRIL 2019 – JULY 2020
- PHASE 2 RH PH XVI CONSTRUCTION (MOORE HALL SITE) AUGUST 2020 – JULY 2021



P R O J E C T O V E R V I E W

PROJECT TIMELINE



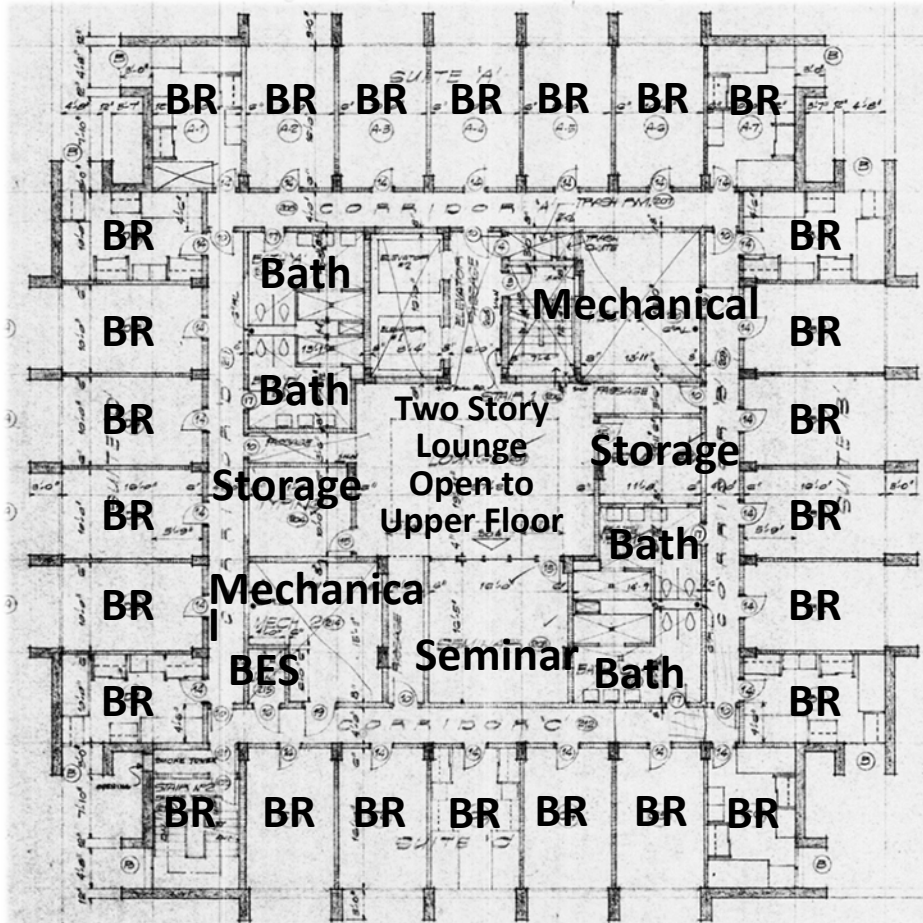
PROJECT DETAILS

DATE	MILESTONE
Jan 2018	Design Start (AP & Demo/Abatement Design)
Aug 2018	Bid Early Site Package (Phase 1 & 2 Demo)
Jan 2019 - Apr 2019	Phase 1 Demo (Sanford Hall)
Jan 2019	RH Ph. XVI CDs Complete
Apr 2019 - Jul 2020	Phase 1 RH Ph. XVI Construction
May 2020 - Aug 2020	Phase 2 Demo (Moore Hall)
Aug 2020 - Jul 2021	Phase 2 RH Ph. XVI Construction
Jul 2021	RH Ph. XVI Complete



PROJECT OVERVIEW

EXISTING INFORMATION



EXISTING PLAN

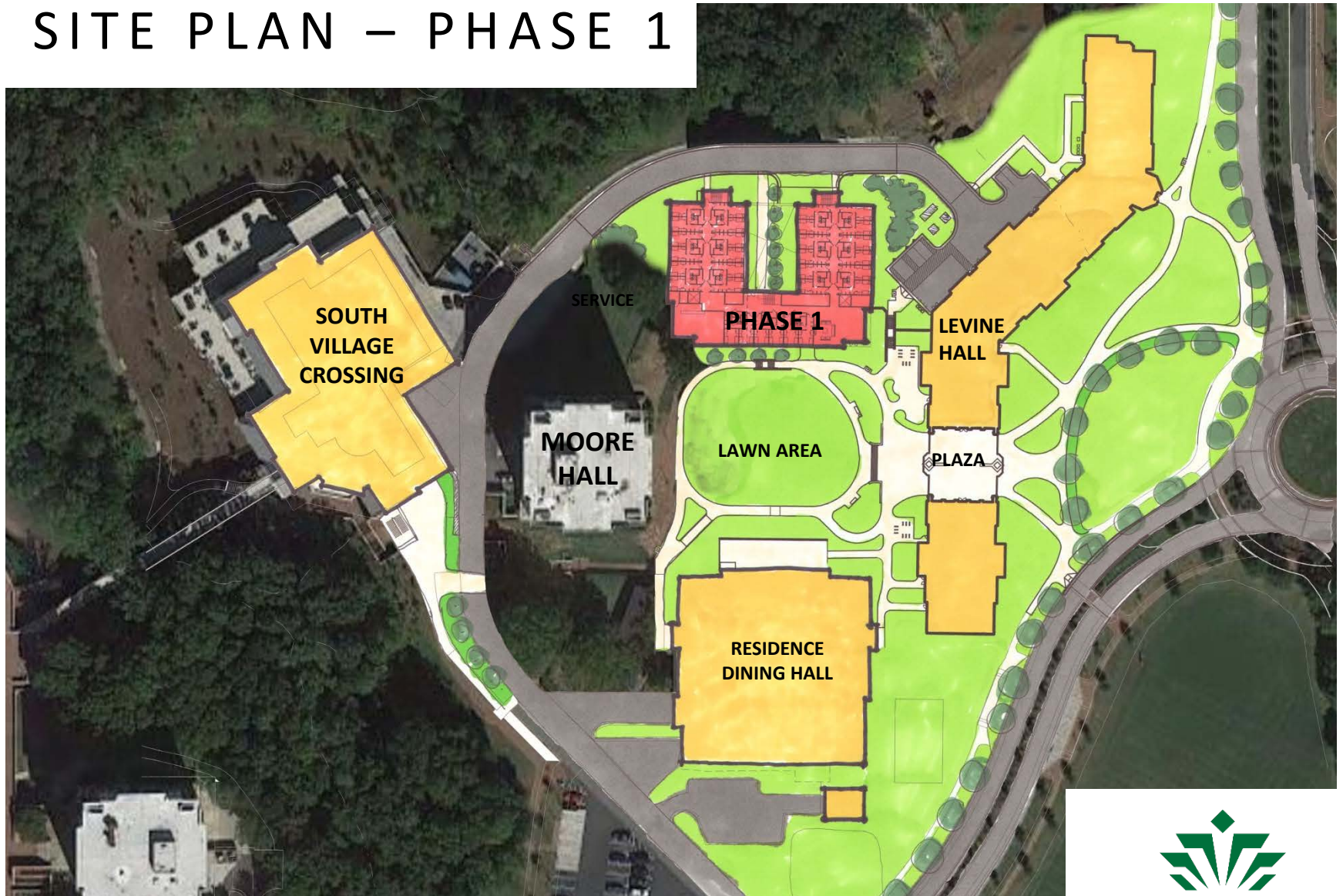


SCOPE OF WORK TO INCLUDE:
MOORE HALL & SANFORD HALL
DEMOLITION AND
ABATEMENT DESIGN



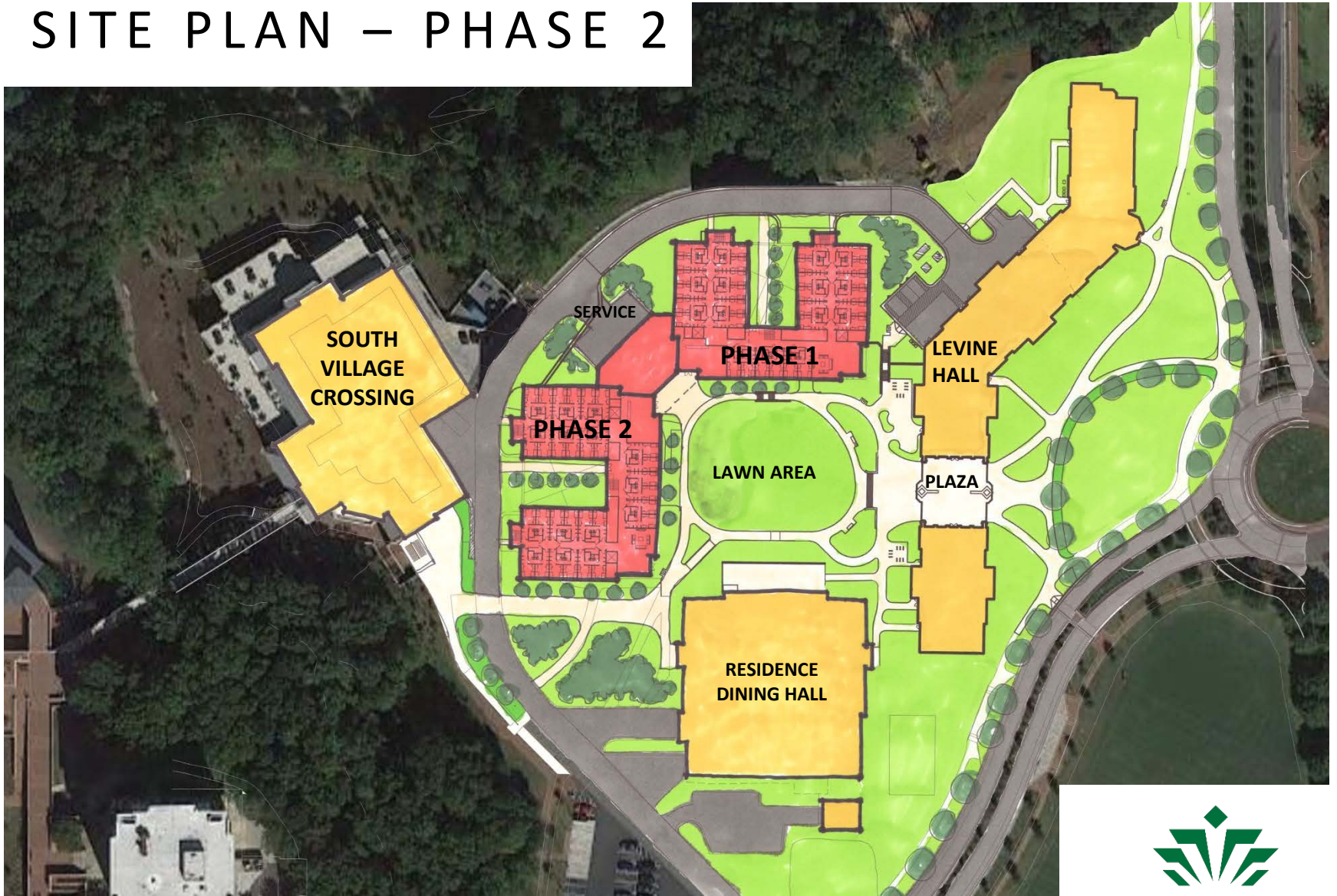
PROJECT OVERVIEW

SITE PLAN – PHASE 1



PROJECT OVERVIEW

SITE PLAN – PHASE 2



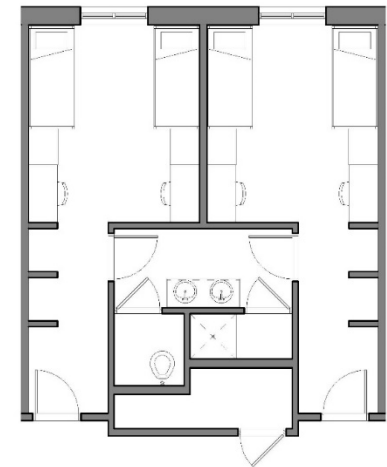
UNC CHARLOTTE

PROJECT OVERVIEW

TYPICAL FLOOR PLAN



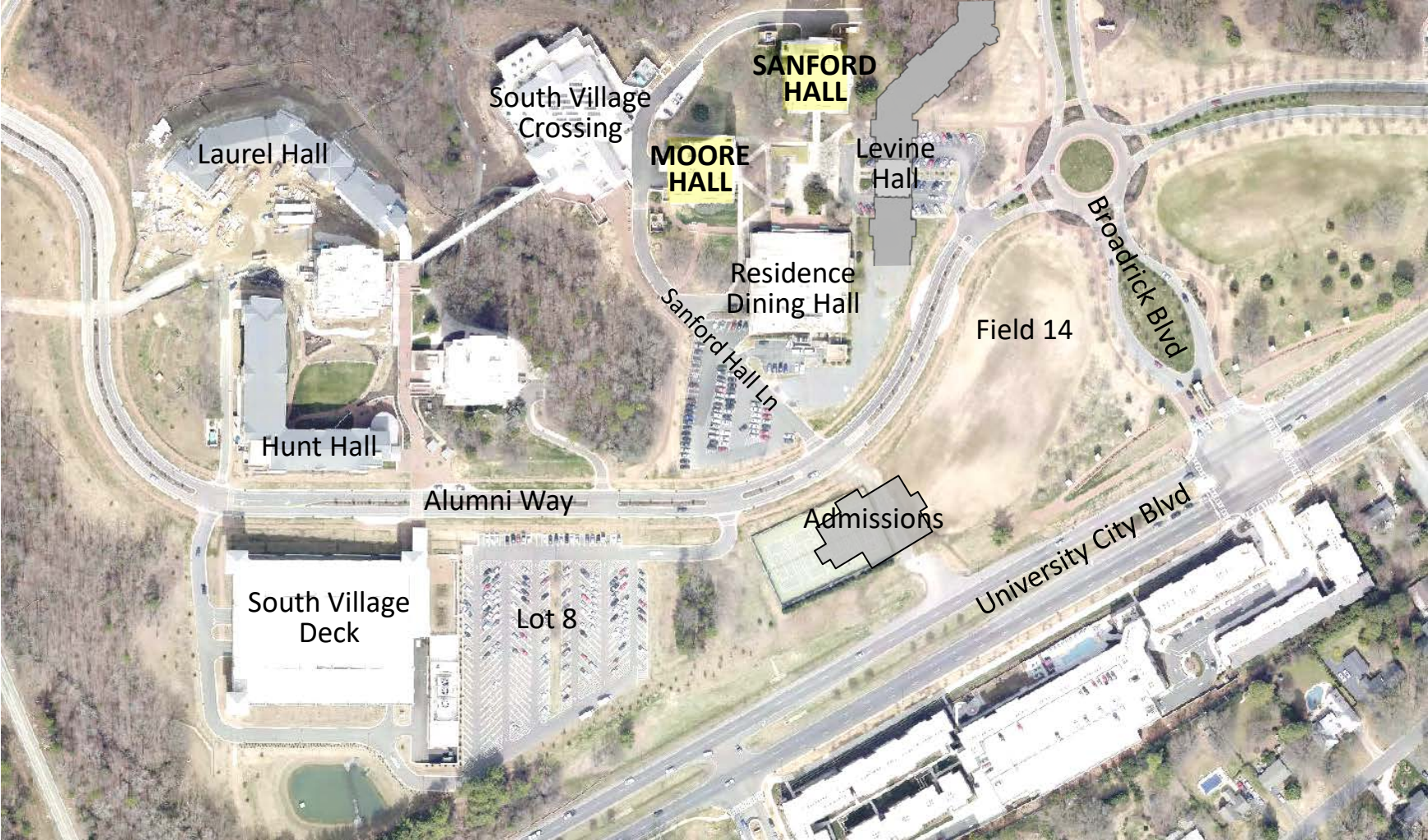
TYPICAL FLOOR PLAN: FLOORS 2-5



TYPICAL UNIT PLAN



P R O J E C T O V E R V I E W



SOUTH VILLAGE

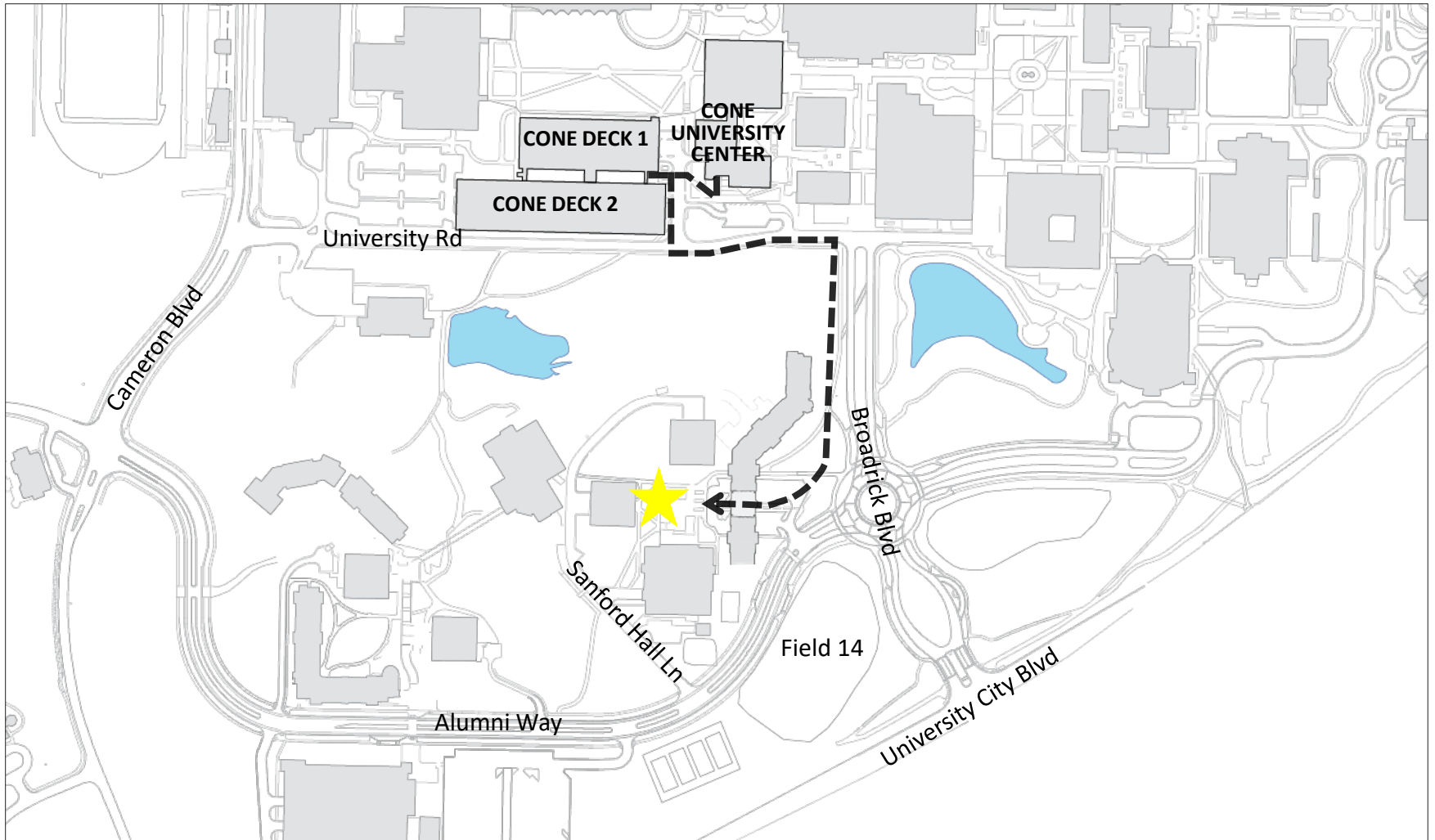


Q U E S T I O N S ?



UNC CHARLOTTE

CAMPUS MAP



SITE VISIT



UNC CHARLOTTE