

Facilities Operations/Parking Services Complex



11:00am June 9, 2016

McEniry Room 127

Meeting Agenda

PART I - General

- Welcome
- Introductions
- **Questions:**
bhkugler@uncc.edu
- **Updates:**
facilities.uncc.edu/advertisements
- HUB and Small Business Enterprise are not considerations for designer selection

PART II - Submittal

- Schedule
- Submittal Format
- Selection Criteria

PART III - Project

- Overview
- General Project Information
- Key Qualifications
- Designer Questions
- Project Site
- Project Timeline



Submittal Schedule

Proposal Due Date June 23rd at 2:00 PM

Shortlisting to be completed in early July
Interviews for selected firms will be in the
afternoon of July 27, 2016



Submittal Format

No larger than 12 ½” in height x 9 ½” in width

Provide 5 printed copies & 1 digital copy

40 page limit (20 double sided)

Page limit includes all printed pages, but not covers, tabs, clear covers, blank pages, cardstock backs, etc.

Page count will be derived from digital copy, so omit all blank pages from the digital version.



Submittal Organization

Provide Information in the following Order:

- A. Required Submittal Cover Sheet
- B. Designer's Supplemental Information Form (or Designer's Staffing Information Form)
- C. Cover letter (optional)
- D. SF330 Part I & II (Make sure to fully complete and submit both parts!)
 - **Note: please list square foot cost for projects shown in bold print!**
- E. Supplemental Information organized into 10 categories with subheadings matching the 10 Designer Selection Criteria



Selection Criteria

Submittals must clearly provide information for each category below utilizing the numbering system and categories for the submittal subtitles.

- (1) Specialized or appropriate expertise in the type of project.
- (2) Past performance on similar projects.
- (3) Adequate staff for the proposed project design team.
- (4) Current workload and State projects awarded.
- (5) Proposed design approach for the project.
- (6) Recent experience with project costs and schedules.
- (7) Construction administration capabilities.
- (8) Proximity to and familiarity with the area where project is located.
- (9) Record of successfully completed projects without major legal or technical problems.
- (10) Other factors that may be appropriate for the project.

Note:

The current workload and past performance of sub-consultants on the designer's team will also be considered when evaluating qualifications.

For all relevant project examples submitted, provide a matrix indicating which design team members worked on the project(s).



Project Overview

Project Budget

Total Project - \$22.8M incl. soft costs

Construction Cost - ~\$16M

Project Size

32,000 gsf – Facilities Operations

23,700 gsf – Receiving & Stores facility &
warehouse

4,000 gsf – Storage Sheds (x3)

6,800 gsf – Metal Canopy

7,000 gsf – Parking Services

81,500 gsf – Total



General Project Information

- You will need to work with us and our stakeholders to determine the most effective use of our new space.
- Facility will need to serve various user groups and a wide range of vehicles
- Project will include an Early Site Package
- Construction Manager at Risk delivery method.



Design Team Qualifications

- Experience with **North Carolina State Construction Office**
- History of projects with **multiple end users**
- Knowledge of **Construction Manager at Risk** delivery method
- Experience with **Early Site Package** development
- Experience with **multi-use facilities**
- Experience with **traffic & transportation** design



General Design Team Qualifications

Show us **Sample Projects and Details that were designed by the proposed project team**

Firm experience is much less relevant if the individuals on the design team did not participate in the project

Show us Sample Projects that demonstrate prior collaboration of the entire design team –

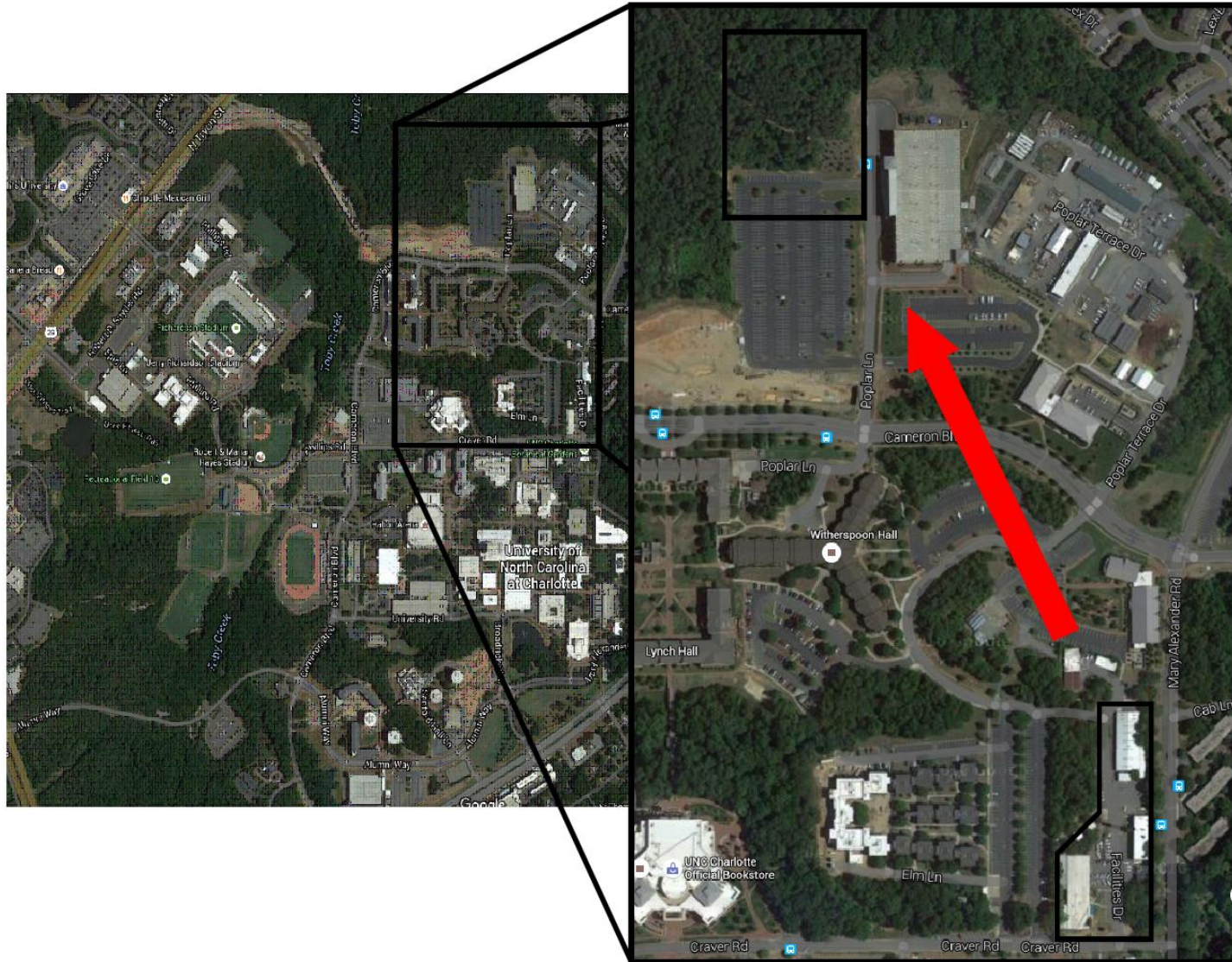
TEAM EXPERIENCE

SF330-Section G Matrix

Team experience is important between Lead Designer and proposed consultants



Proposed Move



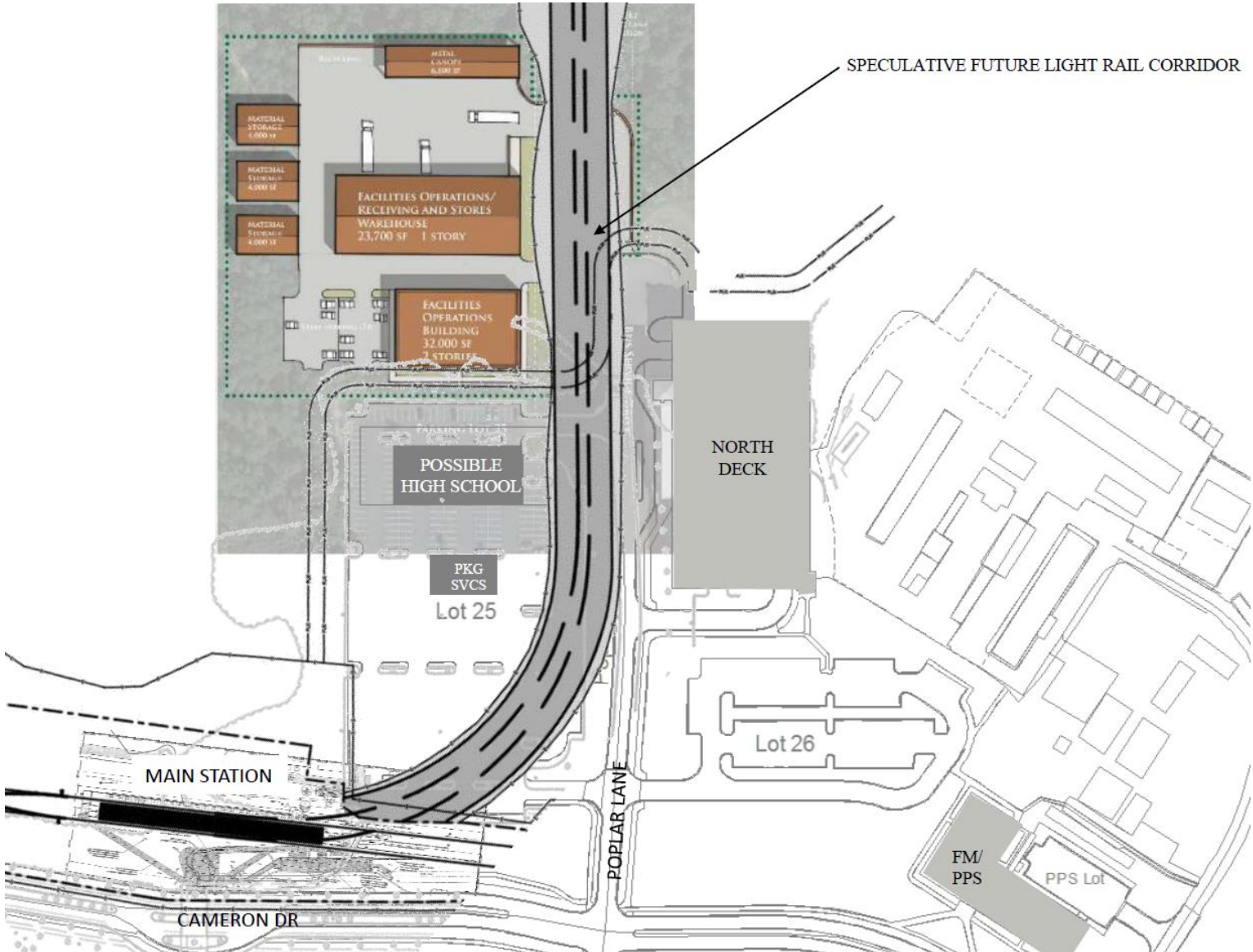
Existing Facilities



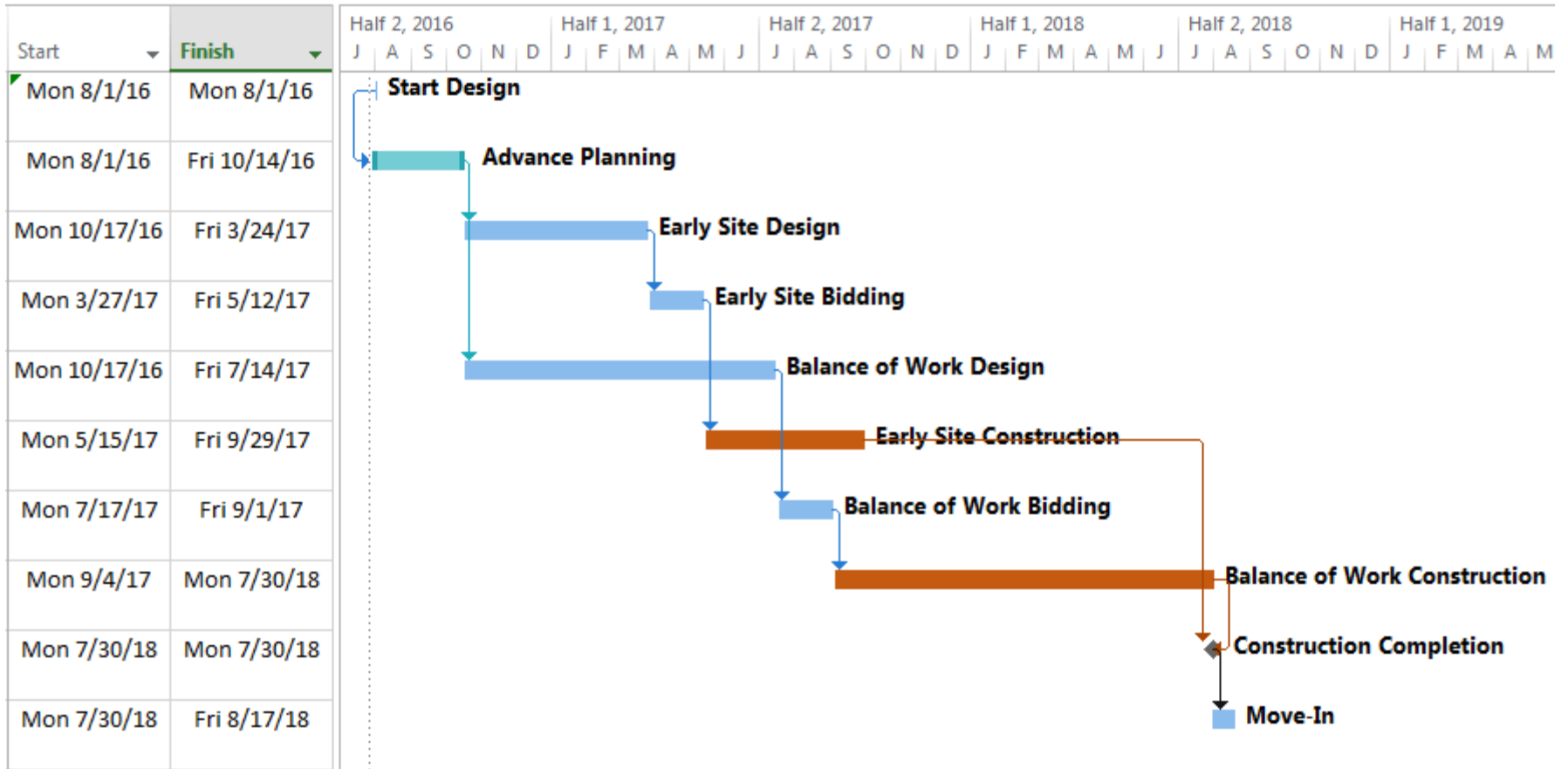
Existing Project Site



Proposed Project Site



Project Timeline



QUESTIONS ?



