

**ADDENDUM NUMBER:** 1  
**PROJECT:** UNC Charlotte Residence Hall Phase XIV - Elevator Bid Package

---

**DATE:** May 22, 2015  
**OWNER:** UNC Charlotte  
**ARCHITECT:** FWA Group

---

**NOTICE TO BIDDERS:**

This addendum is issued prior to receipt of bids, proposals, and its contents do hereby become a part of the pricing documents for the above referenced project.

All subcontractor bidders are responsible for assuring that their subcontractors and vendors are properly apprised of the contents of this Addendum.

All information contained in this Addendum supersedes and takes precedence over any conflicting information in the original pricing documents.

All bidders must acknowledge receipt of this Addendum in the space provided on the Form of Proposal for their bid package.

---

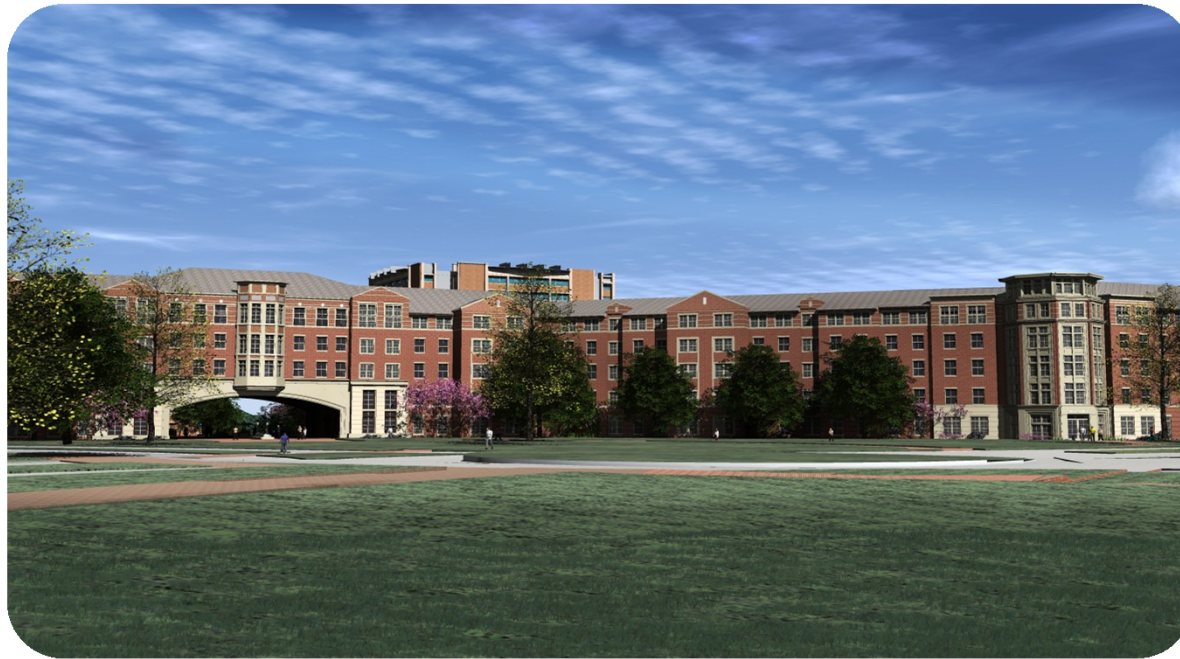
**GENERAL REVISIONS TO BID INFORMATION**

- 1 PreBid Meeting Powerpoint Presentation Dated May 20, 2015 - See Attached
- 2 PreBid Meeting Sign In Sheet - See Attached
- 3 The following Addendums previously issued with the Early Site Package to be included:
  - Addendum #1 - Issued 1/27/15
  - Addendum #2 - Issued 1/30/15
  - Addendum #3 - Issued 2/5/15
  - Addendum #4 - Issued 2/25/15
  - Addendum #5 - Issued 3/4/15
  - Addendum #6 - Issued 3/13/15
  - Addendum #7 - Issued 3/20/15
  - Addendum #8 - Issued 3/31/15
  - Addendum #9 - Issued 4/10/15/15
  - Addendum #10 - Issued 4/14/15

**REVISIONS TO DESIGN DOCUMENTS**

- 1 N/A

**END OF ADDENDUM**



**UNC Charlotte  
Residence Hall Phase XIV - Elevators**

**Prebid Meeting  
May 20, 2015**

**RODGERS**  
Our Passion is Building®

## Introduction of Team Members

### Owner: UNC Charlotte

- Phil Jones, P.E. – Associate Vice Chancellor
- John Neilson – Associate Director Capital Construction
- Brian Kugler, Sr. Project Manager
- Dorothy Vick, HUB Coordinator

### Design Team: The FWA Group

- Jim Palmieri, AIA – Project Architect

### Optima Engineering

- Ron Almond, P.E.,

### Bulla Smith Design Engineering

- Jeff Smith, P.E.
- William Bulla III, P.E.

### Construction Manager: Rodgers

- Eric Reichard, OIC
- John Taylor, Construction Manager
- Jason Money, Preconstruction
- James Clayton, HUB Program Manager



---

## Project Overview

---

- The new facility is approximately 159,493 square foot facility consisting of 440 beds in-suite configuration. The residence hall will also include meeting, laundry and multi-purpose rooms on each level. The building exterior will utilize brick and pre-cast concrete as is typical for this campus.
- Project located in the area of MSU Lot and Sanford Hall in South Village.
- Construction Manager at Risk delivery method
- Located at the UNCC Main Campus, Charlotte, NC
- \$38,500,000 Total Construction Budget

---

## Project Scope – Early Site Bid Packages

---

### Early Site Package(s):

- 14A - Elevators

---

## Project Scope – Early Site Bid Schedule

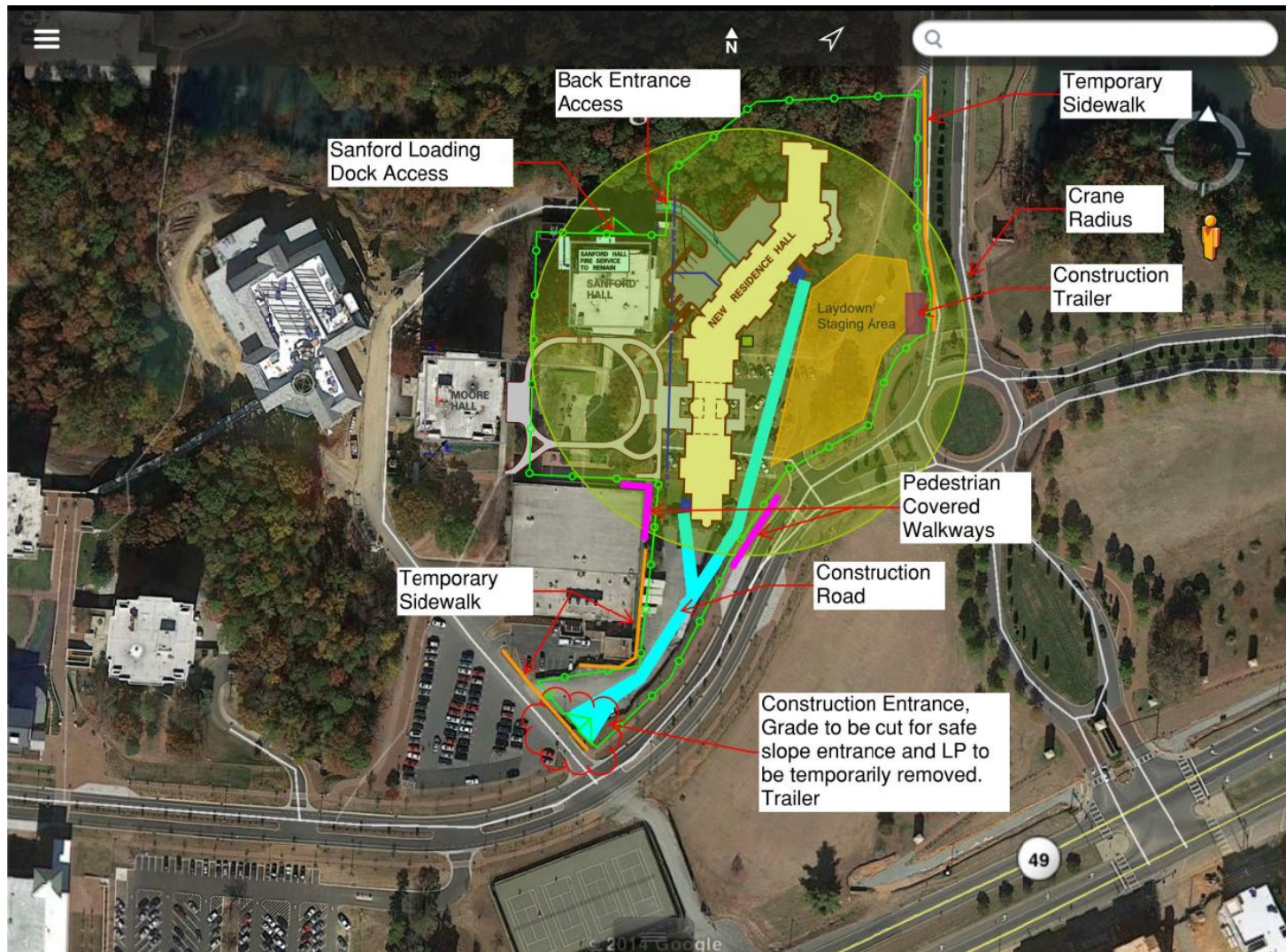
---

- Project Info/Outreach Session Completed
- Prequalification Due Date Completed
- Project Bid Date June 2, 2015  
2:00PM  
Location: Cone Center  
Room 320
- Request For Information Deadline May 22, 2015  
5:00PM
- Construction Start Date May 2015
- Completion Date July 2016

## Project Scope – Site Logistics



# Project Scope – Site Logistics





---

## Project Scope – Bid Documents

---

### Pricing Documents

- Bid Package Manual
  - General Summary of Work
  - Specific Summary of Work
  - Form of Proposal
  
- Construction Plans

### Rodgers Online Plan Room

- Pricing Documents will be available via online plan room
  
- Accessing planroom
  - Go to [www.rodgersbuilders.com](http://www.rodgersbuilders.com)
  - Click the “Plan Room” link

---

## Bid Package Manual - Form of Proposal

---

- Only accepting bids on the Bid Package Manual Form of Proposal
- Sealed originals (no faxes or emails)
- Lump sum base bid
- Alternates as affecting scope of work
  - No price entered on FOP = \$0.00
- Unit prices
- Acknowledge all addenda
- No alterations, exclusions, or clarifications
- Round base bid and alternates to whole numbers

---

## Prequalification

---

- Prequalification for this project in accordance with NC Session Law 201-42 – State Construction Office required to establish a prequalification policy and to make modifications to the existing prequalification forms and matrix.
- A project specific prequalification form has been created for this project and can be accessed at UNC Facilities website (<http://facilities.uncc.edu/advertisements>) or [www.rodgersbuilders.com](http://www.rodgersbuilders.com)
- Do not use the prequalification form from the State Construction Office, use the one that has been populated for this project as previously mentioned.
- Must complete new prequalification form even if you are currently prequalified with Rodgers.
- Mail or hand deliver original prequal forms to Attn: William Satterfield.
- Prequalification applicants must be duly licensed in the State of North Carolina
- The CM and Owner reserve the right to reject any and all prequalification applications.

---

## HUB Participation

---

- Rodgers strongly encourages 1<sup>st</sup> Tier Contractors to use certified HUB contractors and suppliers.
- 30% Minimum HUB Participation at 1<sup>st</sup> Tier Level
- \$500,000 Payment & Performance Bond Threshold – Unless part of Bldg. Envelope
- \$500,000 Bid Bond Threshold – Unless part of Bldg. Envelope
- State Construction Guidelines for Recruitment and Selection of Minority Businesses for Participation in State Construction Contracts – In Accordance with G.S. 143-128.2
  - Guidelines can be accessed at <http://www.nc-sco/documents/guidelines/MBGuidelines2002R.pdf>

### Obtaining Minority Business Participation Forms

- Rodgers Bid Package Manual
- UNC Charlotte Facilities Website (<http://facilities.uncc.edu/advertisements>)
- State Construction Office Website (<http://www.nc-sco.com/default.aspx>)
- Office for Historically Underutilized Businesses (<http://www.doa.nc.gov/hub/legislation.aspx#Forms>)

---

## Questions & Answers

---

**Q&A**

**Thank You**

