

11/01/19



**UNC CHARLOTTE
IT INFRASTRUCTURE
UPGRADES - STORRS,
ROWE & REESE
BUILDINGS**

SCO ID #: 18-19671-02A

TAG	DESCRIPTION	DATE
△	ADDENDUM #03	12/09/2019

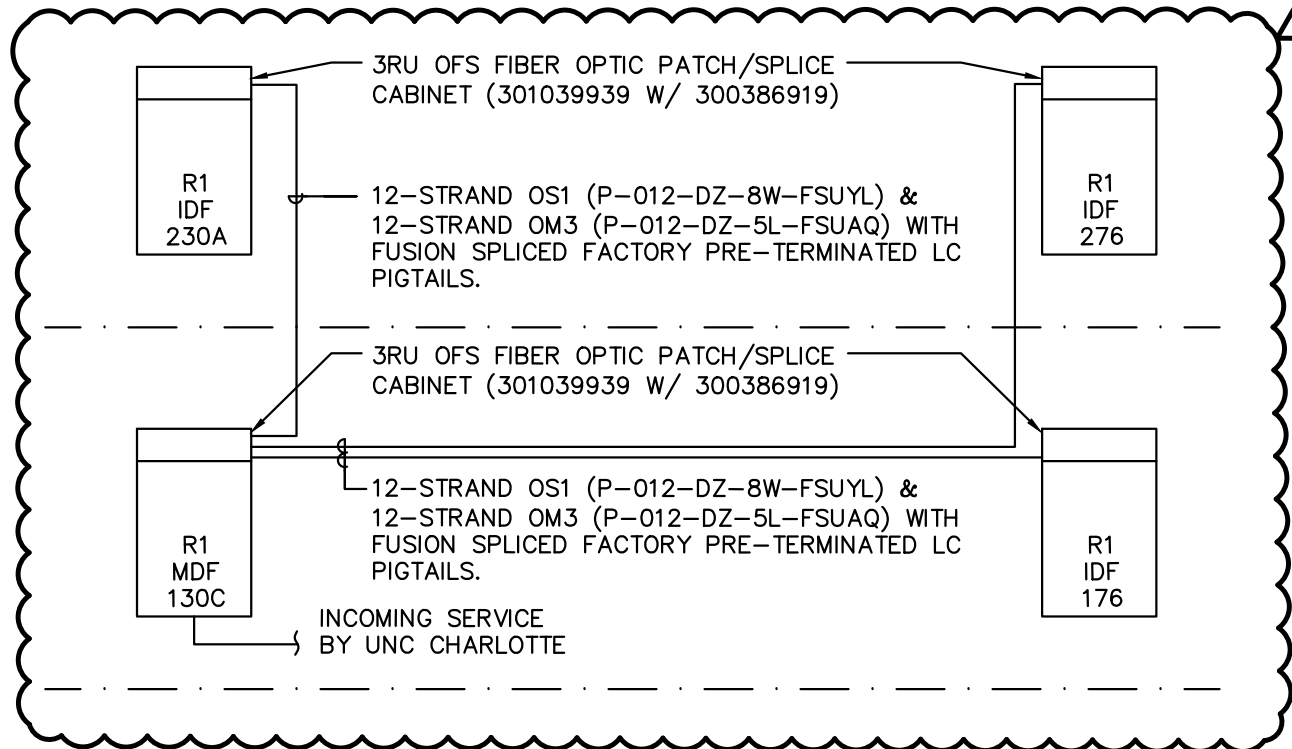
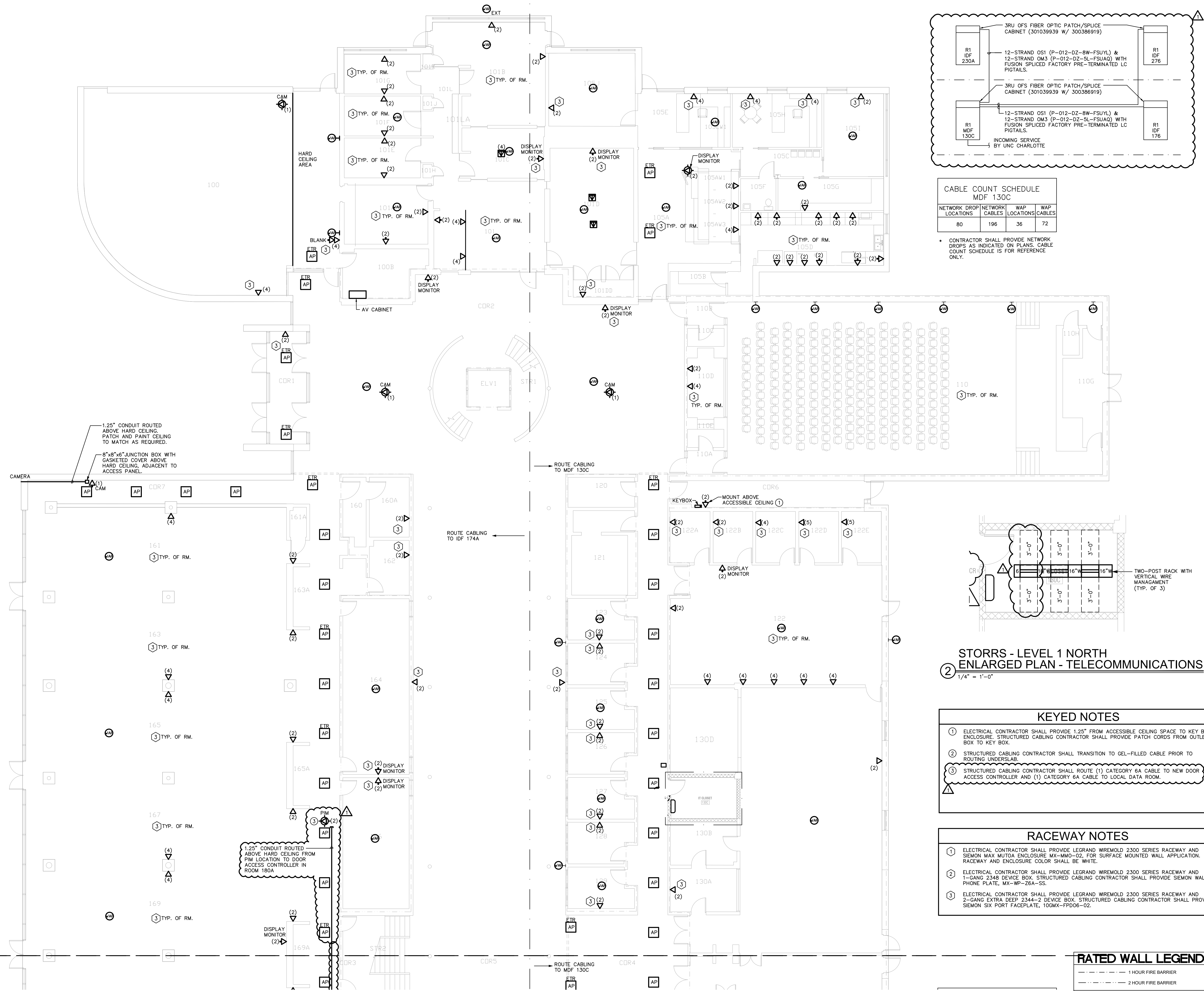
Project: 19-0016
Drawn By: TMC
Checked By: BLM

11-01-2019

**STORRS - LEVEL 1
NORTH FLOOR
PLAN - TELECOM**

CONSTRUCTION
DOCUMENTS

TC1.01



**CABLE COUNT SCHEDULE
MDF 130C**

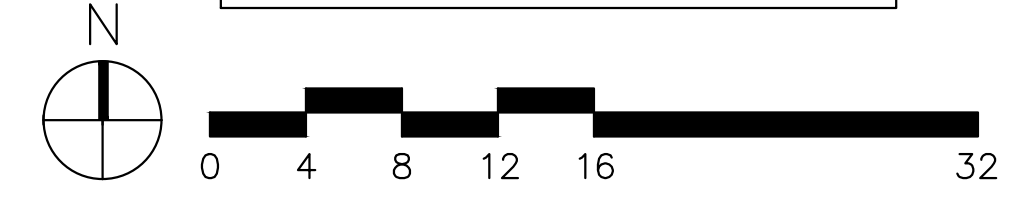
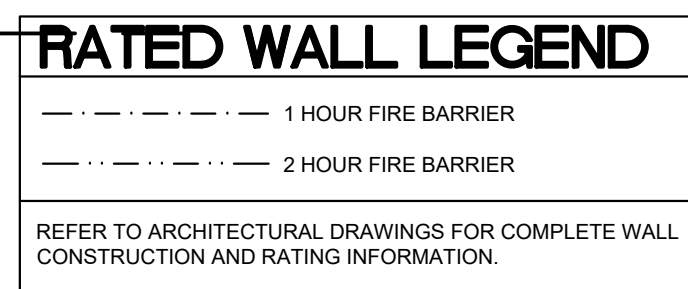
NETWORK LOCATIONS	DROP NETWORK CABLES	WAP LOCATIONS	WAP CABLES
80	196	36	72

* CONTRACTOR SHALL PROVIDE NETWORK DROPS AS INDICATED ON PLANS. CABLE COUNT SCHEDULE IS FOR REFERENCE ONLY.

**STORRS - LEVEL 1 NORTH
ENLARGED PLAN - TELECOMMUNICATIONS**
1/4" = 1'-0"

- KEYED NOTES**
- ELECTRICAL CONTRACTOR SHALL PROVIDE 1.25" FROM ACCESSIBLE CEILING SPACE TO KEY BOX ENCLOSURE. STRUCTURED CABLING CONTRACTOR SHALL PROVIDE PATCH CORDS FROM OUTLET BOX TO KEY BOX.
 - STRUCTURED CABLING CONTRACTOR SHALL TRANSITION TO GEL-FILLED CABLE PRIOR TO ROUTING UNDERSLAB.
 - STRUCTURED CABLING CONTRACTOR SHALL ROUTE (1) CATEGORY 6A CABLE TO NEW DOOR ACCESS CONTROLLER AND (1) CATEGORY 6A CABLE TO LOCAL DATA ROOM.

- RACEWAY NOTES**
- ELECTRICAL CONTRACTOR SHALL PROVIDE LEGRAND WIREMOLD 2300 SERIES RACEWAY AND SIMON MAX MUTOA ENCLOSURE MX-MMO-02, FOR SURFACE MOUNTED WALL APPLICATION. RACEWAY AND ENCLOSURE COLOR SHALL BE WHITE.
 - ELECTRICAL CONTRACTOR SHALL PROVIDE LEGRAND WIREMOLD 2300 SERIES RACEWAY AND 1-GANG 2348 DEVICE BOX. STRUCTURED CABLING CONTRACTOR SHALL PROVIDE SIMON WALL PHONE PLATE, MX-WP-26A-SS.
 - ELECTRICAL CONTRACTOR SHALL PROVIDE LEGRAND WIREMOLD 2300 SERIES RACEWAY AND 2-GANG EXTRA DEEP 2344-2 DEVICE BOX. STRUCTURED CABLING CONTRACTOR SHALL PROVIDE SIMON SIX PORT FACEPLATE, 100MX-FPD06-02.



**STORRS - LEVEL 1 NORTH
FLOOR PLAN - TELECOMMUNICATIONS**
1/8" = 1'-0"

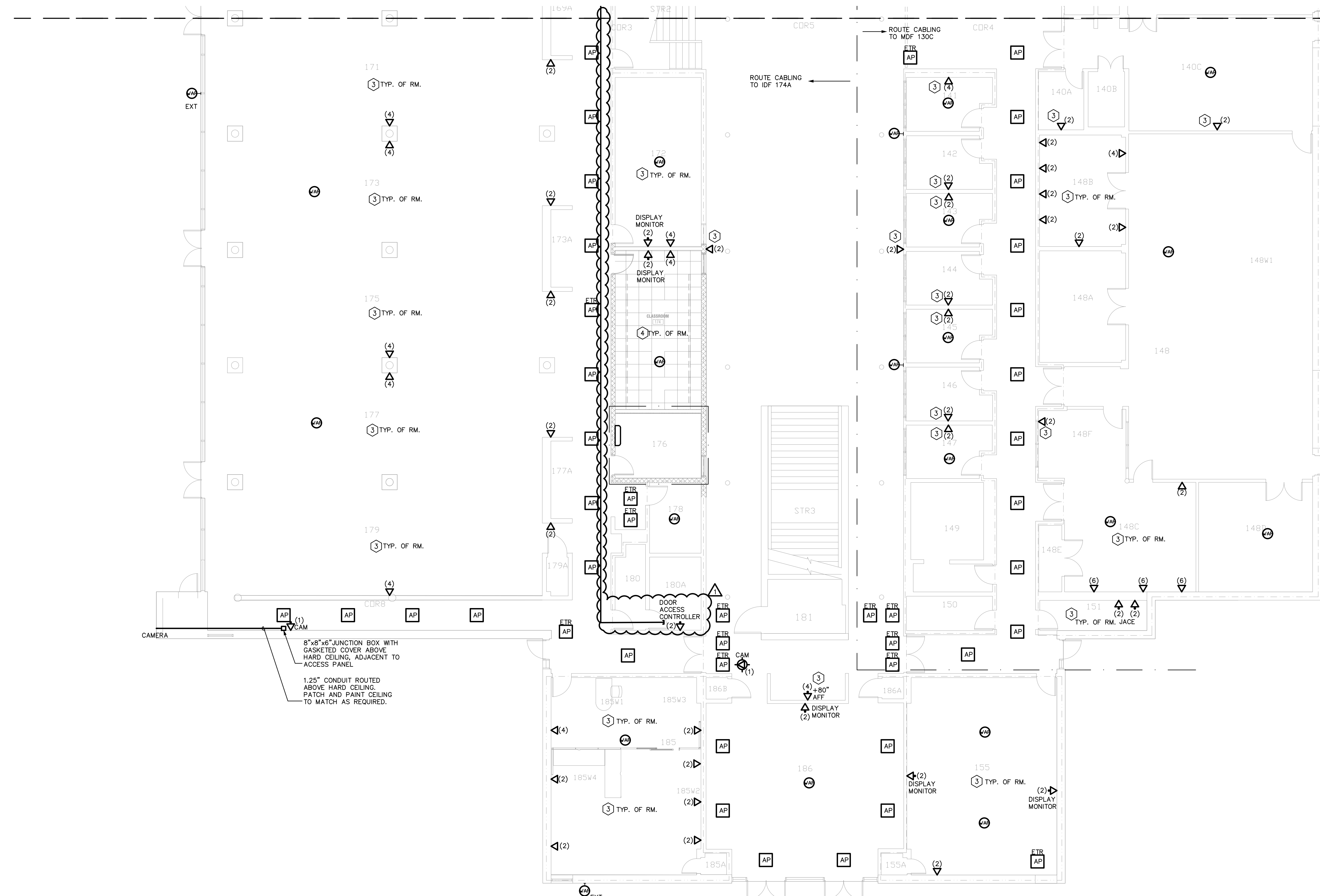


D

C

B

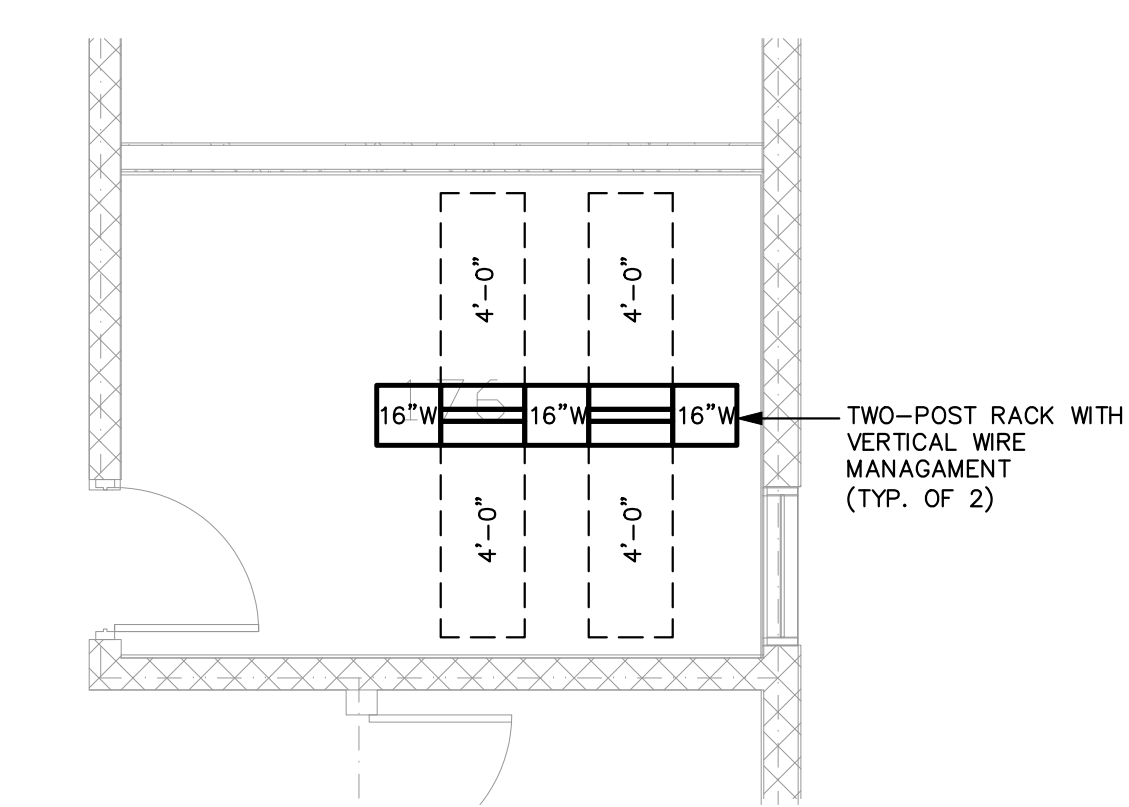
A



CABLE COUNT SCHEDULE
IDF 174A

NETWORK LOCATIONS	DROP CABLES	WAP LOCATIONS	WAP CABLES
44	114	22	42

CONTRACTOR SHALL PROVIDE NETWORK DROPS AS INDICATED ON PLANS. CABLE COUNT SCHEDULE IS FOR REFERENCE ONLY.



STORRS - LEVEL 1 SOUTH ENLARGED PLAN - TELECOMMUNICATIONS
1/4" = 1'-0"

RACEWAY NOTES

- ELECTRICAL CONTRACTOR SHALL PROVIDE LEGRAND WIREMOLD 2300 SERIES RACEWAY AND SIEMON MAX MUTDA ENCLOSURE MX-MMO-02, FOR SURFACE MOUNTED WALL APPLICATION. RACEWAY AND ENCLOSURE COLOR SHALL BE WHITE.
- ELECTRICAL CONTRACTOR SHALL PROVIDE LEGRAND WIREMOLD 2300 SERIES RACEWAY AND 1-GANG 2349 DEVICE BOX. STRUCTURED CABLING CONTRACTOR SHALL PROVIDE SIEMON WALL PHONE PLATE, MX-WP-Z8A-SS.
- ELECTRICAL CONTRACTOR SHALL PROVIDE LEGRAND WIREMOLD 2300 SERIES RACEWAY AND 2-GANG EXTRA DEEP 2344-2 DEVICE BOX. STRUCTURED CABLING CONTRACTOR SHALL PROVIDE SIEMON SIX PORT FACEPLATE, 10GMX-PP006-02.
- ELECTRICAL CONTRACTOR SHALL PROVIDE JUNCTION BOX AND CONDUIT AS NOTED ON SYMBOL SCHEDULE.

RATED WALL LEGEND

(Symbol)	1 HOUR FIRE BARRIER
(Symbol)	2 HOUR FIRE BARRIER

REFER TO ARCHITECTURAL DRAWINGS FOR COMPLETE WALL CONSTRUCTION AND RATING INFORMATION.



STORRS - LEVEL 1 - AREA B FLOOR PLAN - TELECOMMUNICATIONS
1/8" = 1'-0"



UNC CHARLOTTE IT INFRASTRUCTURE UPGRADES - STORRS, ROWE & REESE BUILDINGS

SCO ID #: 18-19671-02A

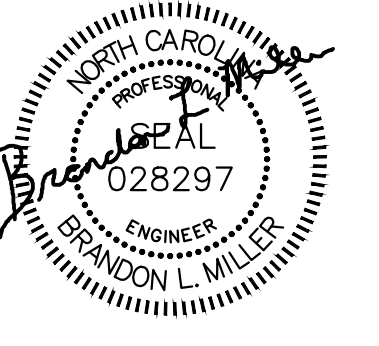
TAG	DESCRIPTION	DATE
△	ADDENDUM #03	12/09/2019

Project: 19-0016
Drawn By: TMC
Checked By: BLM

11-01-2019
STORRS - LEVEL 1 SOUTH FLOOR PLAN - TELECOM

CONSTRUCTION DOCUMENTS

TC1.02



11/01/19



UNC CHARLOTTE
IT INFRASTRUCTURE
UPGRADES - STORRS,
ROWE & REESE
BUILDINGS

SCO ID #: 18-19671-02A

TAG	DESCRIPTION	DATE
△	ADDENDUM #03	12/09/2019

Project: 19-0016
 Drawn By: TMC
 Checked By: BLM

11-01-2019

STORRS - LEVEL 2
NORTH FLOOR
PLAN - TELECOM

CONSTRUCTION
DOCUMENTS

TC1.03

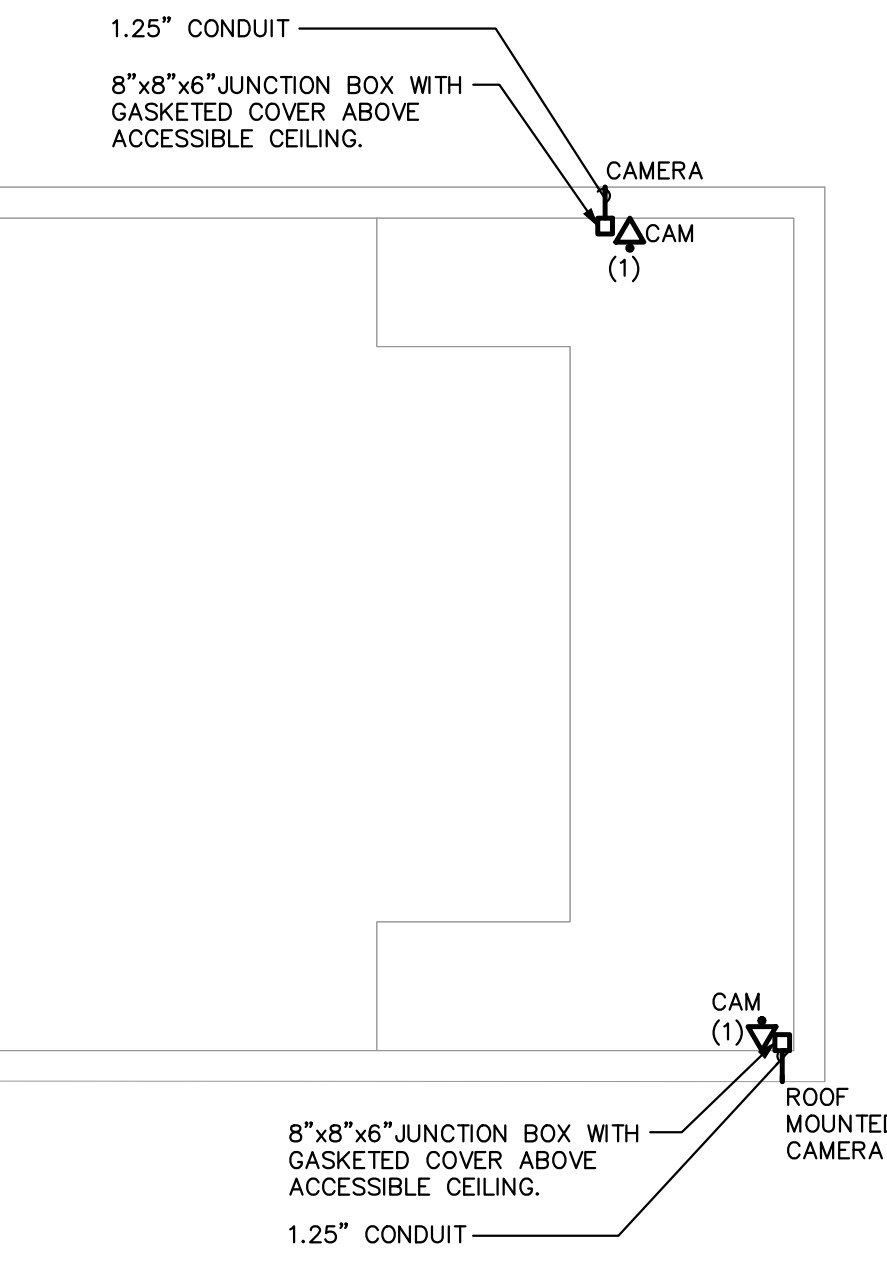
KEYED NOTES

① STRUCTURED CABLING CONTRACTOR SHALL ROUTE (1) CATEGORY 6A CABLE TO NEW DOOR ACCESS CONTROLLER AND (1) CATEGORY 6A CABLE TO LOCAL DATA ROOM.

CABLE COUNT SCHEDULE
IDF 230A

NETWORK DROPS LOCATIONS	NETWORK CABLES	WAP LOCATIONS	WAP CABLES
54	89	19	38

CONTRACTOR SHALL PROVIDE NETWORK DROPS AS INDICATED ON PLANS. CABLE COUNT SCHEDULE IS FOR REFERENCE ONLY.



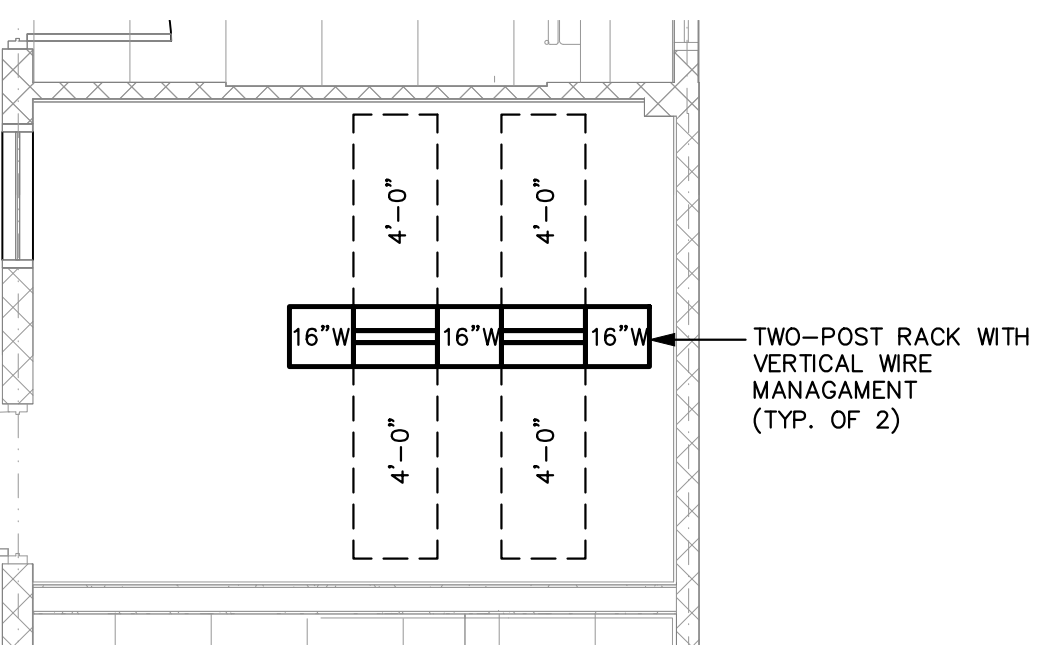
RACEWAY NOTES

① ELECTRICAL CONTRACTOR SHALL PROVIDE LEGRAND WIREMOLD 2300 SERIES RACEWAY AND SIEMON MAX MUTOA ENCLOSURE MX-MMO-02, FOR SURFACE MOUNTED WALL APPLICATION. RACEWAY AND ENCLOSURE COLOR SHALL BE WHITE.

② ELECTRICAL CONTRACTOR SHALL PROVIDE LEGRAND WIREMOLD 2300 SERIES RACEWAY AND 1-GANG 234B DEVICE BOX. STRUCTURED CABLING CONTRACTOR SHALL PROVIDE SIEMON WALL PHONE PLATE, MX-WP-26A-SS.

③ ELECTRICAL CONTRACTOR SHALL PROVIDE LEGRAND WIREMOLD 2300 SERIES RACEWAY AND 2-GANG EXTRA DEEP 2344-2 DEVICE BOX. STRUCTURED CABLING CONTRACTOR SHALL PROVIDE SIEMON SIX PORT FACEPLATE, 10GMX-FPD06-02.

④ ELECTRICAL CONTRACTOR SHALL PROVIDE JUNCTION BOX AND CONDUIT AS NOTED ON SYMBOL SCHEDULE.

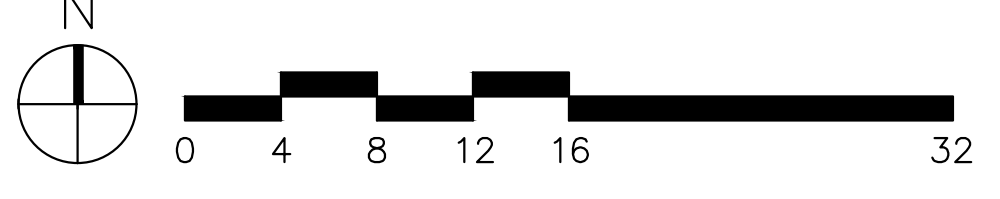


STORRS - LEVEL 2 NORTH
FLOOR PLAN - TELECOMMUNICATIONS
 ② 1/4" = 1'-0"

RATED WALL LEGEND

--- 1 HOUR FIRE BARRIER
 --- 2 HOUR FIRE BARRIER

REFER TO ARCHITECTURAL DRAWINGS FOR COMPLETE WALL CONSTRUCTION AND RATING INFORMATION.



STORRS - LEVEL 2 NORTH
FLOOR PLAN - TELECOMMUNICATIONS
 ① 1/8" = 1'-0"

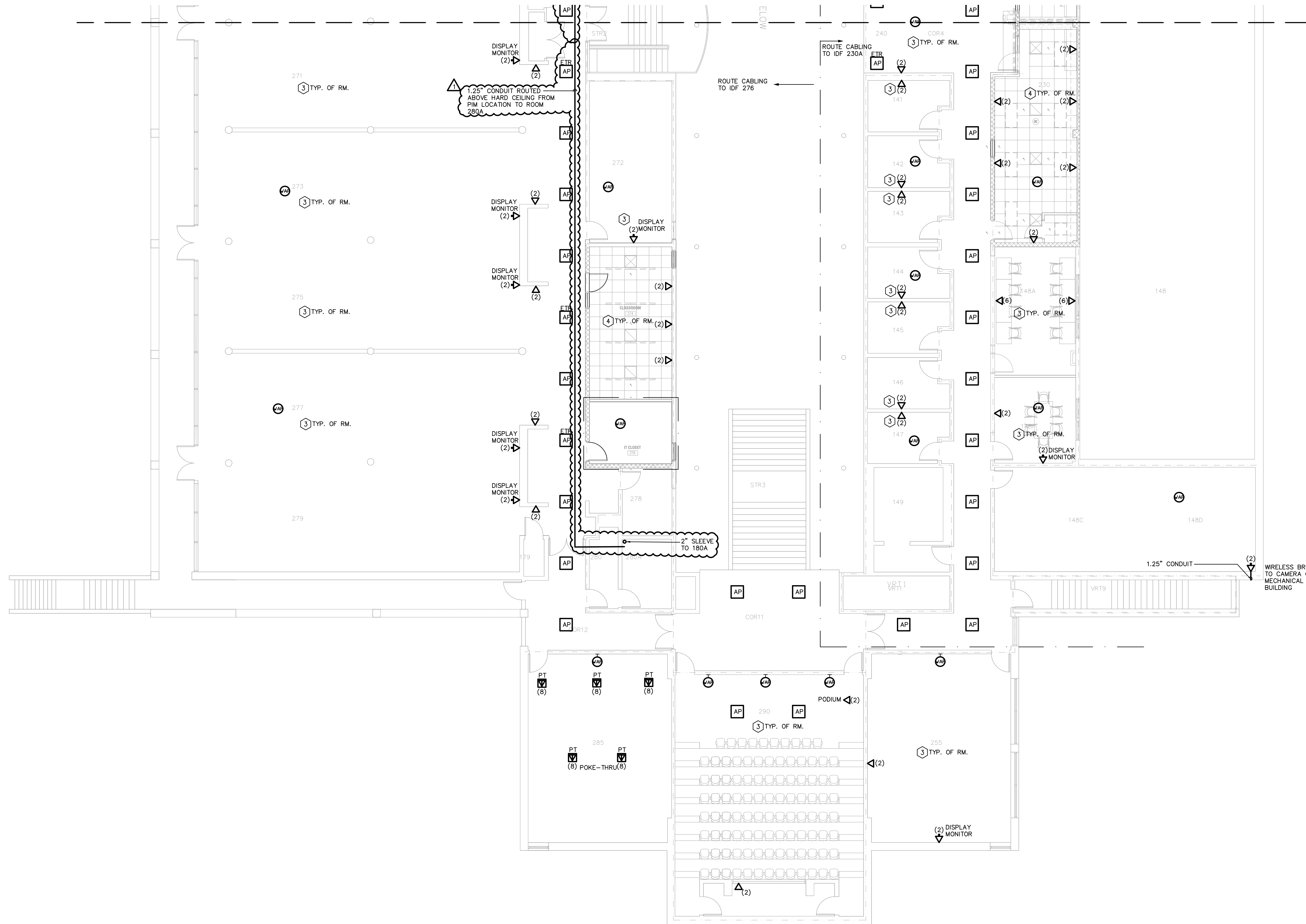


D

C

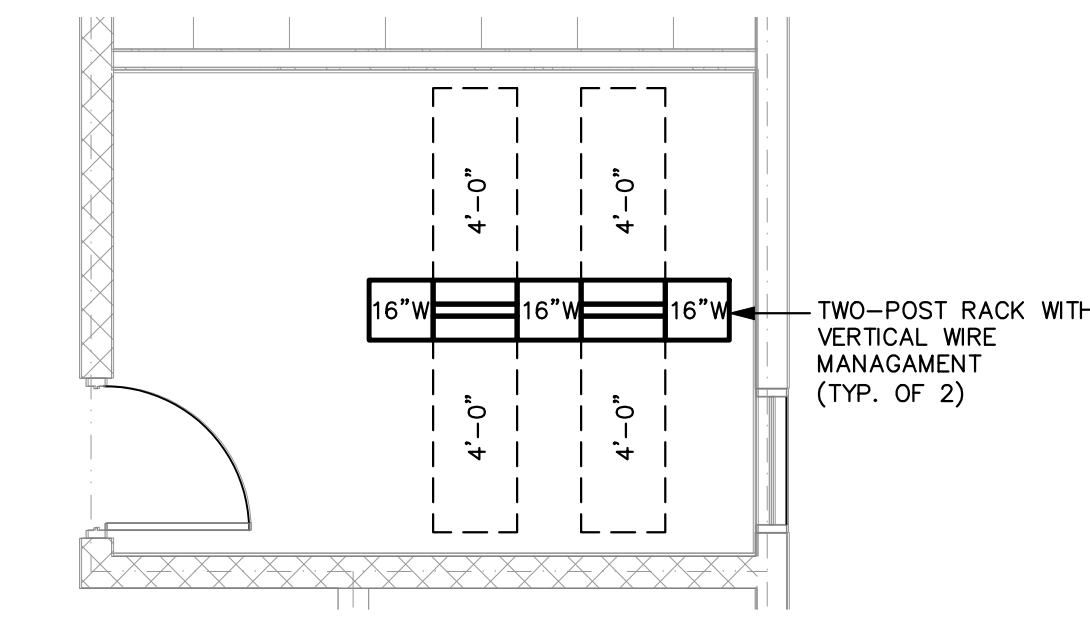
B

A



NETWORK LOCATIONS	DROP CABLES	NETWORK LOCATIONS	WAP LOCATIONS	WAP CABLES
38	128	16	16	31

CONTRACTOR SHALL PROVIDE NETWORK DROPS AS INDICATED ON PLANS. CABLE COUNT SCHEDULE IS FOR REFERENCE ONLY.

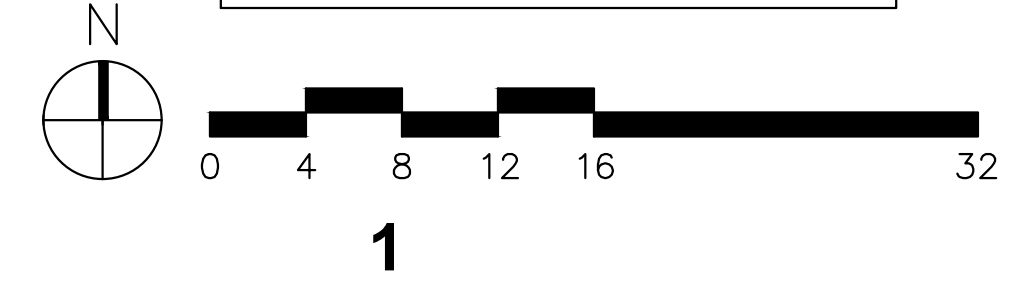


STORRS - LEVEL 2 SOUTH ENLARGED PLAN - TELECOMMUNICATIONS
1/4" = 1'-0"

1	ELECTRICAL CONTRACTOR SHALL PROVIDE LEGRAND WIREMOLD 2300 SERIES RACEWAY AND SIMON MAX MUTOA ENCLOSURE MX-MMO-02, FOR SURFACE MOUNTED WALL APPLICATION. RACEWAY AND ENCLOSURE COLOR SHALL BE WHITE.
2	ELECTRICAL CONTRACTOR SHALL PROVIDE LEGRAND WIREMOLD 2300 SERIES RACEWAY AND 1-GANG 2348 DEVICE BOX. STRUCTURED CABLING CONTRACTOR SHALL PROVIDE SIEMON WALL PHONE PLATE, MX-WP-26A-SS.
3	ELECTRICAL CONTRACTOR SHALL PROVIDE LEGRAND WIREMOLD 2300 SERIES RACEWAY AND 2-GANG EXTRA DEEP 2344-2 DEVICE BOX. STRUCTURED CABLING CONTRACTOR SHALL PROVIDE SIEMON SIX PORT FACEPLATE, 100MA-FR06-02.
4	ELECTRICAL CONTRACTOR SHALL PROVIDE JUNCTION BOX AND CONDUIT AS NOTED ON SYMBOL SCHEDULE.

(Symbol: Dashed line)	1 HOUR FIRE BARRIER
(Symbol: Dotted line)	2 HOUR FIRE BARRIER

REFER TO ARCHITECTURAL DRAWINGS FOR COMPLETE WALL CONSTRUCTION AND RATING INFORMATION.



STORRS - LEVEL 2 SOUTH FLOOR PLAN - TELECOMMUNICATIONS
1/8" = 1'-0"



UNC CHARLOTTE IT INFRASTRUCTURE UPGRADES - STORRS, ROWE & REESE BUILDINGS

SCO ID #: 18-19671-02A

TAG	DESCRIPTION	DATE
△	ADDENDUM #03	12/09/2019

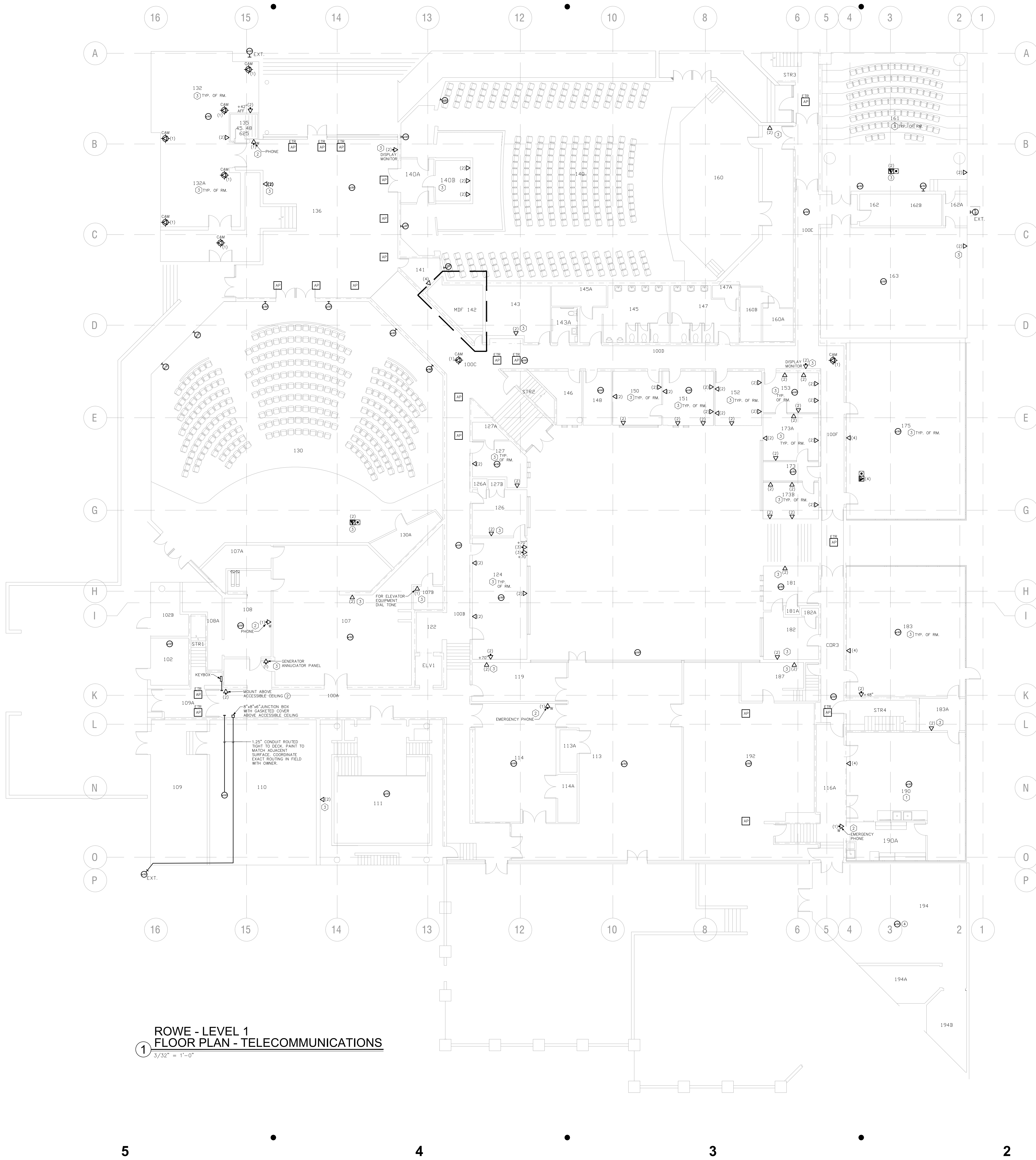
TAG	DESCRIPTION	DATE

Project: 19-0016
Drawn By: TMC
Checked By: BLM

11-01-2019
STORRS - LEVEL 2 SOUTH FLOOR PLAN - TELECOM

CONSTRUCTION DOCUMENTS

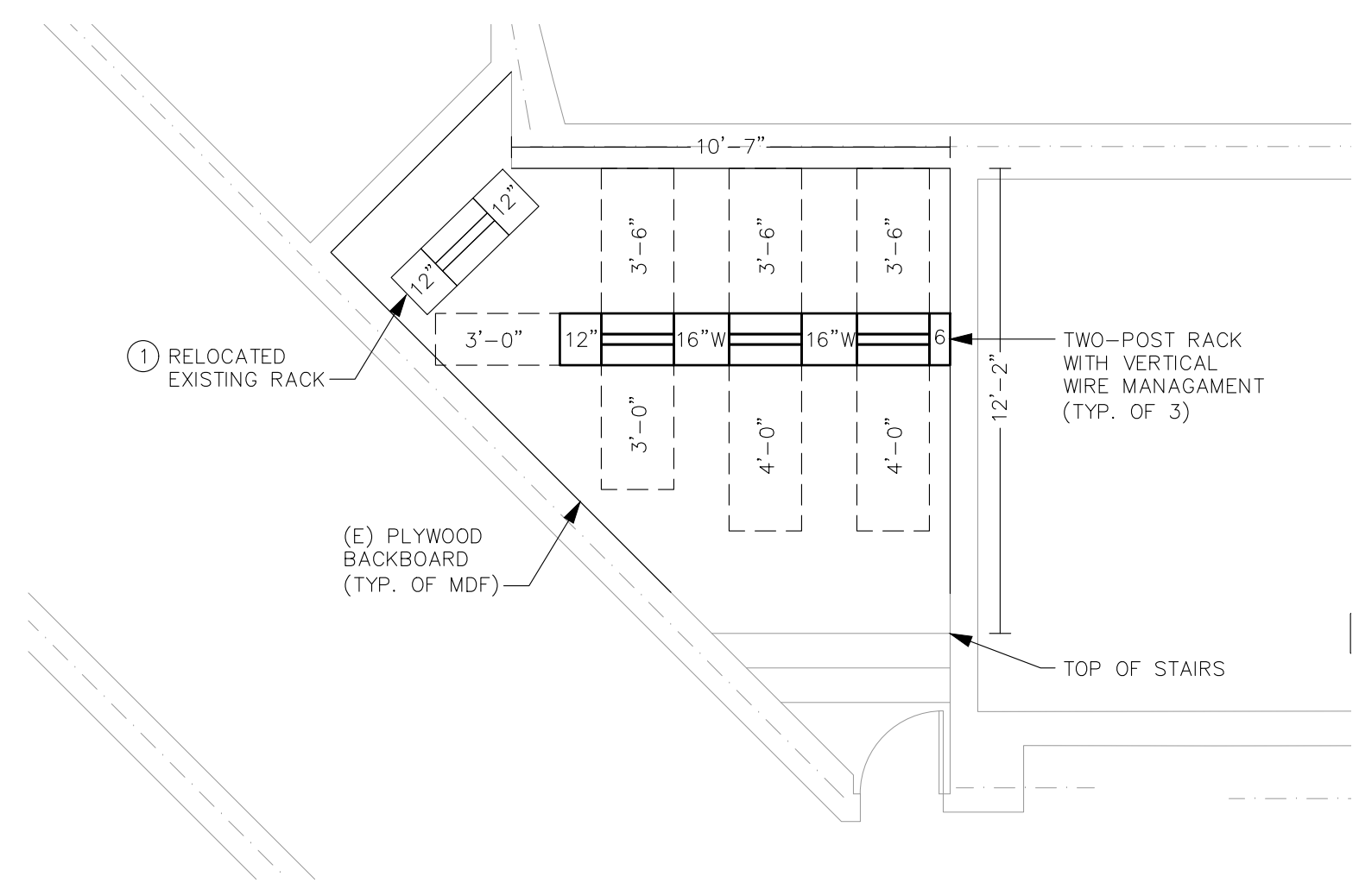
TC1.04



1 ROWE - LEVEL 1
FLOOR PLAN - TELECOMMUNICATIONS
3/32" = 1'-0"

- KEYED NOTES**
- EXISTING TELECOMMUNICATIONS EQUIPMENT AND CABLING SHALL BE CONSOLIDATED INTO A SINGLE RACK BY OWNER. RACK SHALL BE TEMPORARILY LOCATED OUTSIDE FOOTPRINT OF NEW EQUIPMENT. STRUCTURED CABLING CONTRACTOR SHALL PROVIDE A PARALLEL NETWORK AS INDICATED ON THE FLOOR PLANS.
 - ELECTRICAL CONTRACTOR SHALL PROVIDE 1.25" CONDUIT FROM ACCESSIBLE CEILING SPACE TO KEY BOX ENCLOSURE. STRUCTURED CABLING CONTRACTOR SHALL PROVIDE PATCH CORDS FROM OUTLET BOX TO KEY BOX.
 - STRUCTURED CABLING CONTRACTOR SHALL TRANSITION TO GEL-FILLED CABLE PRIOR TO ROUTING UNDERSLAB.
 - STRUCTURED CABLING CONTRACTOR SHALL PROVIDE OUTSIDE PLANT CABLE FOR WIRELESS ACCESS POINT IN ROOM 194. TRANSITION TO PLENUM RATED CABLE WHEN ENTERING BUILDING.

- RACEWAY NOTES**
- ELECTRICAL CONTRACTOR SHALL PROVIDE LEGRAND WIREMOLD 2300 SERIES RACEWAY AND SIEMEN MAX MUTDA ENCLOSURE MX-MMO-02, FOR SURFACE MOUNTED WALL APPLICATION. RACEWAY AND ENCLOSURE COLOR SHALL BE WHITE.
 - ELECTRICAL CONTRACTOR SHALL PROVIDE LEGRAND WIREMOLD 2300 SERIES RACEWAY AND 1-GANG 2348 DEVICE BOX. STRUCTURED CABLING CONTRACTOR SHALL PROVIDE SIEMEN WALL PHONE PLATE, MX-WP-26A-SS.
 - ELECTRICAL CONTRACTOR SHALL PROVIDE LEGRAND WIREMOLD 2300 SERIES RACEWAY AND 2-GANG EXTRA DEEP 2344-2 DEVICE BOX. STRUCTURED CABLING CONTRACTOR SHALL PROVIDE SIEMEN SIX PORT FACEPLATE, 100MX-FPD06-02.

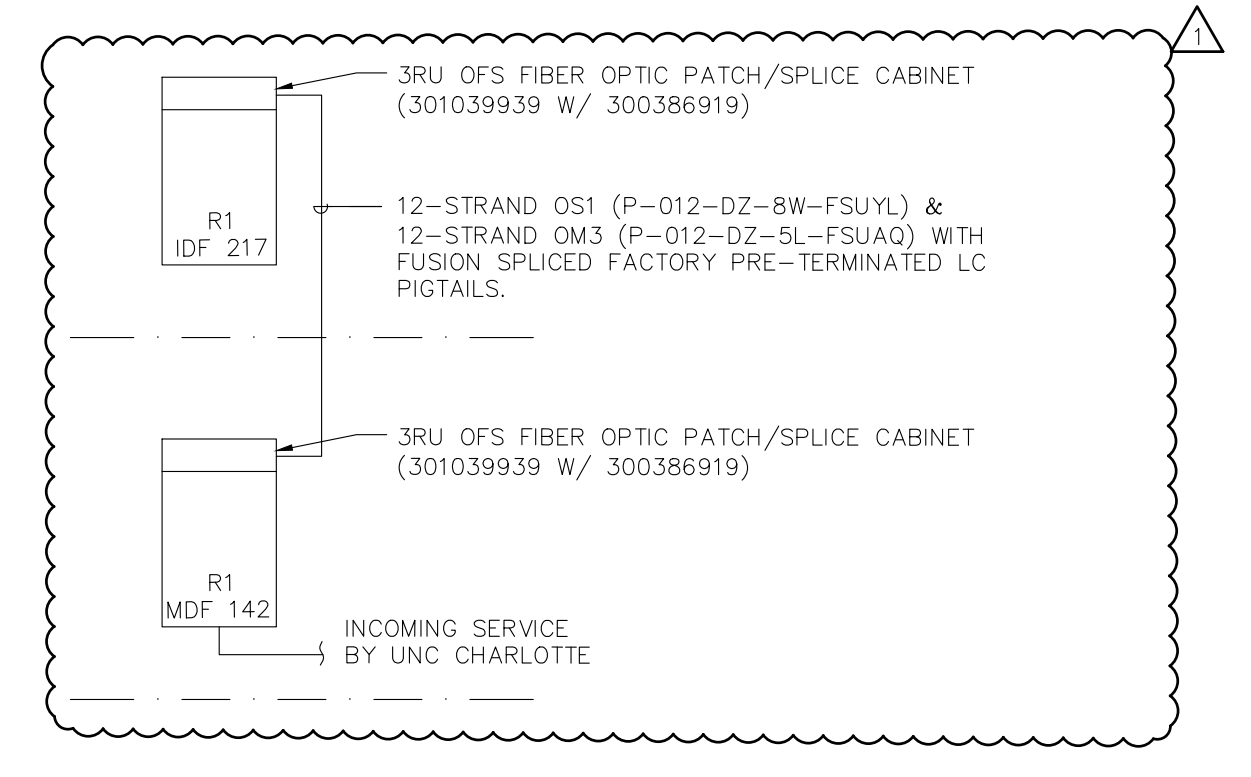


2 ROWE - LEVEL 1
ENLARGED PLAN - TELECOMMUNICATIONS
1/4" = 1'-0"

CABLE COUNT SCHEDULE
MDF 142

NETWORK LOCATIONS	DROP NETWORK CABLES	WAP LOCATIONS	WAP CABLES
75	146	41	82

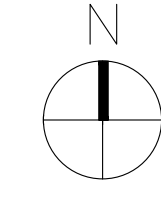
* CONTRACTOR SHALL PROVIDE NETWORK DROPS AS INDICATED ON PLANS. CABLE COUNT SCHEDULE IS FOR REFERENCE ONLY.



RATED WALL LEGEND

(Symbol: Dashed line)	1 HOUR FIRE BARRIER
(Symbol: Solid line)	2 HOUR FIRE BARRIER

REFER TO ARCHITECTURAL DRAWINGS FOR COMPLETE WALL CONSTRUCTION AND RATING INFORMATION.



MEP:
OPTIMA ENGINEERING
1927 S. TRYON ST. SUITE 300
CHARLOTTE, NC 28203

ARCHITECT:
WATSON TATE SAVORY, INC.
1307 W. MOREHEAD ST. SUITE 101
CHARLOTTE, NC 28208



11/01/19



**UNC CHARLOTTE
IT INFRASTRUCTURE
UPGRADES - STORRS,
ROWE & REESE
BUILDINGS**

SCO ID #: 18-19671-02A

TAG	DESCRIPTION	DATE
△	ADDENDUM #03	12/09/2019

Project: 19-0016
Drawn By: TMC
Checked By: BLM

11-01-2019

**ROWE - LEVEL 1
FLOOR PLAN -
TELECOM**

**CONSTRUCTION
DOCUMENTS**

TC2.01



11/01/19



UNC CHARLOTTE
IT INFRASTRUCTURE
UPGRADES - STORRS,
ROWE & REESE
BUILDINGS

SCO ID #: 18-19671-02A

TAG	DESCRIPTION	DATE
▲	ADDENDUM #03	12/09/2019

Project: 19-0016
Drawn By: TMC
Checked By: BLM

11-01-2019

**REESE - FLOOR
PLANS - TELECOM**

**ALTERNATE #2 -
REESE BUILDING**
(9035 UNIVERSITY RD.)

**CONSTRUCTION
DOCUMENTS**

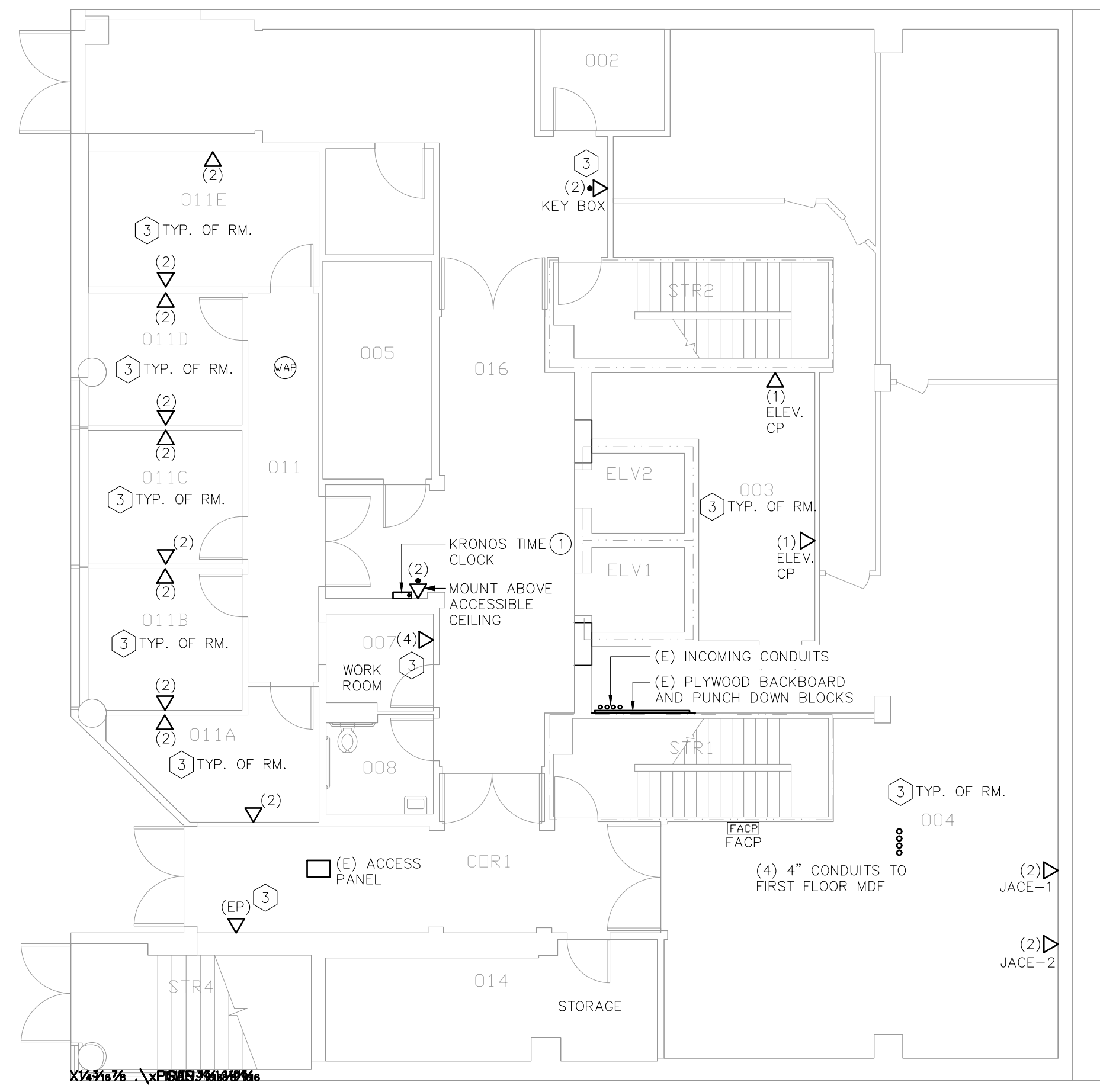
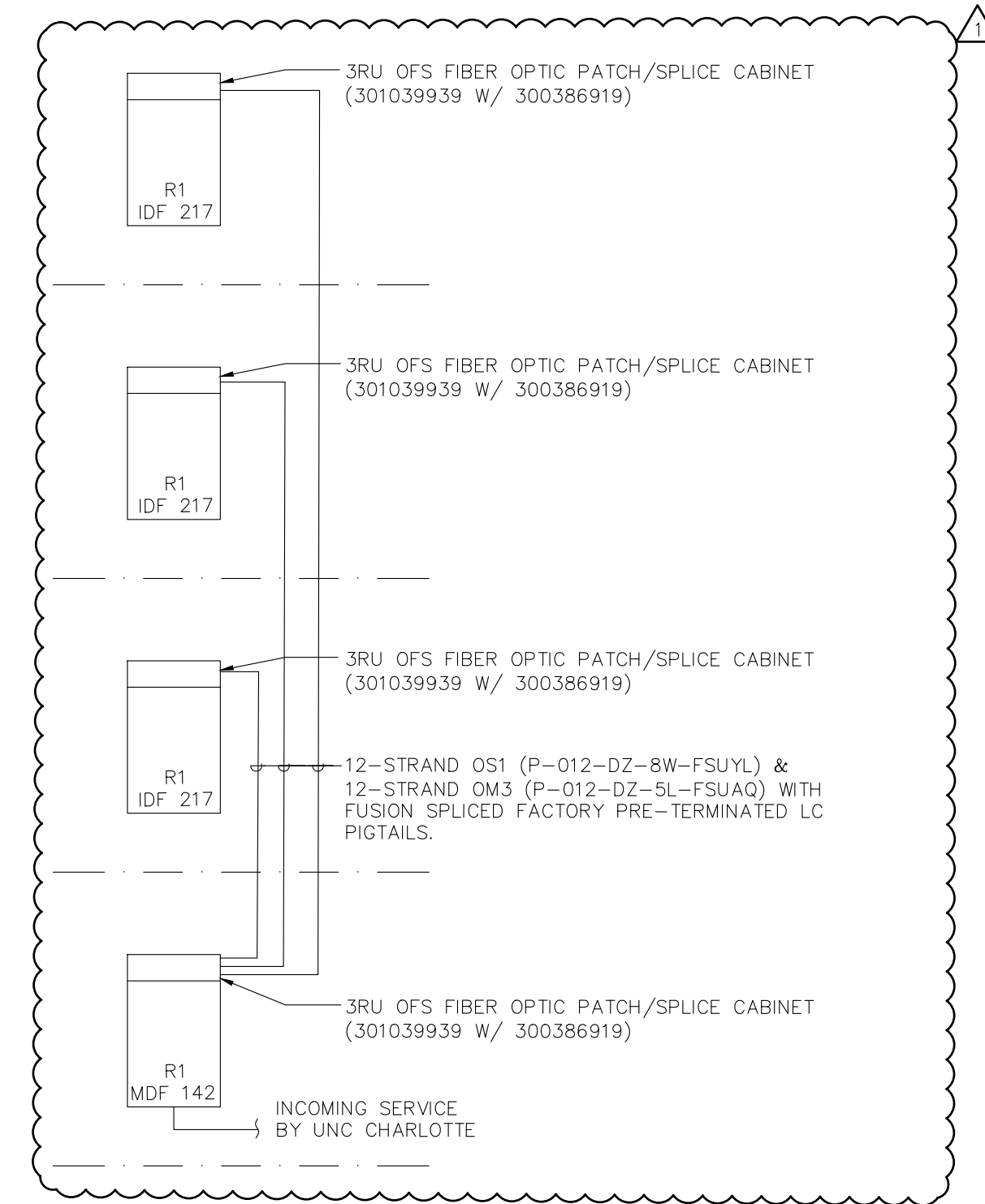
TC3.01

KEYED NOTES

- ELECTRICAL CONTRACTOR SHALL PROVIDE 1.25" FROM ACCESSIBLE CEILING SPACE TO TIME CLOCK ENCLOSURE. STRUCTURED CABLING CONTRACTOR SHALL PROVIDE PATCH CORDS FROM OUTLET BOX TO TIME CLOCK.

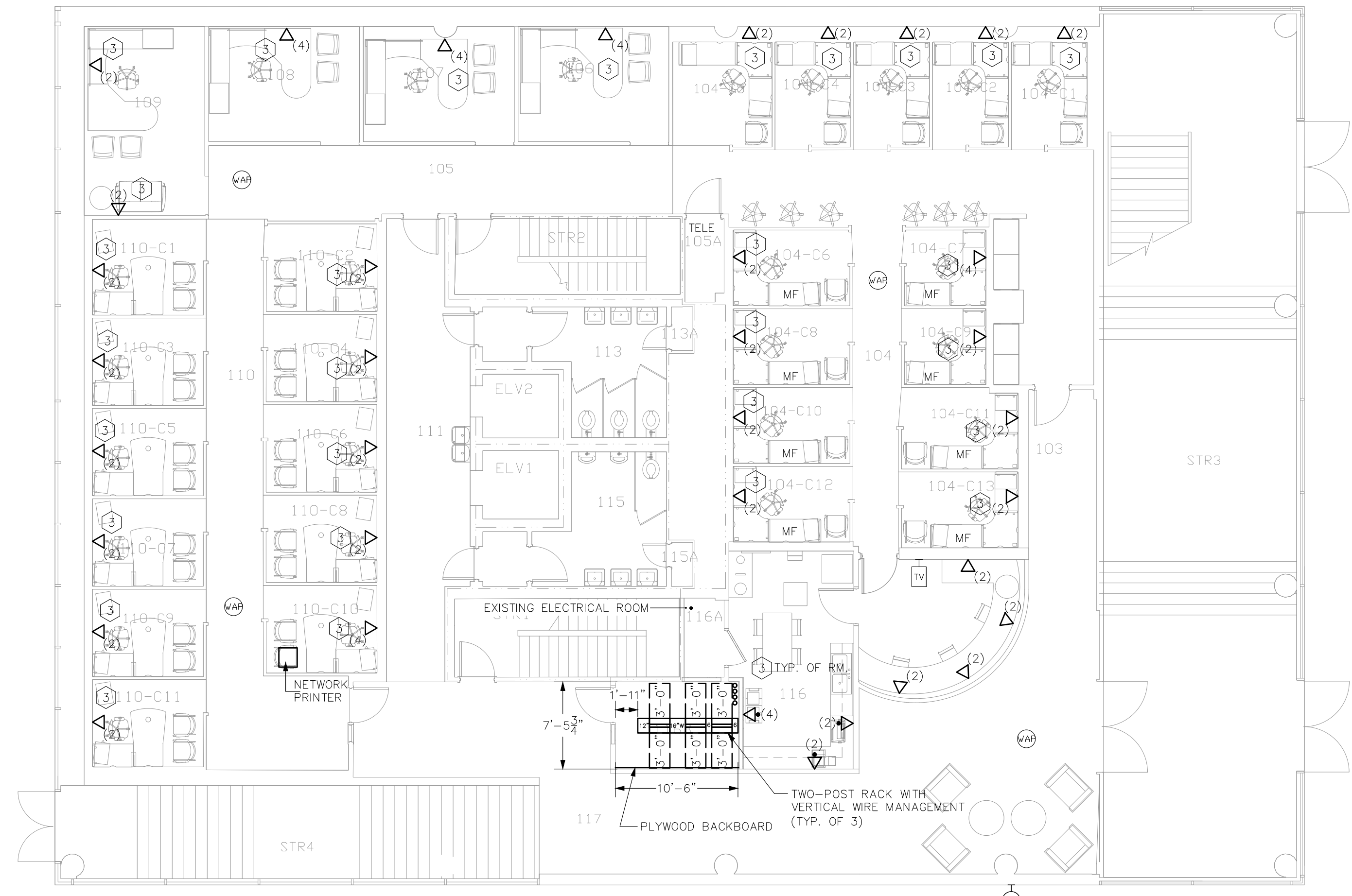
RACEWAY NOTES

- ELECTRICAL CONTRACTOR SHALL PROVIDE LEGRAND WIREMOLD 2300 SERIES RACEWAY AND SIMON MAX MULTIA ENCLOSURE MX-MMO-02, FOR SURFACE MOUNTED WALL APPLICATION. RACEWAY AND ENCLOSURE COLOR SHALL BE WHITE.
- ELECTRICAL CONTRACTOR SHALL PROVIDE LEGRAND WIREMOLD 2300 SERIES RACEWAY AND 1-GANG 2348 DEVICE BOX. STRUCTURED CABLING CONTRACTOR SHALL PROVIDE SIMON WALL PHONE PLATE, MX-WP-26A-SS.
- ELECTRICAL CONTRACTOR SHALL PROVIDE LEGRAND WIREMOLD 2300 SERIES RACEWAY AND 2-GANG EXTRA DEEP 2344-2 DEVICE BOX. STRUCTURED CABLING CONTRACTOR SHALL PROVIDE SIMON SIX PORT FACEPLATE, 10GM-FPD06-02.



GENERAL NOTE:
A. ROUTE ALL CABLING ON THIS LEVEL TO IDF 116A ON LEVEL 1.

1 REESE - GROUND FLOOR
1/8" = 1'-0"

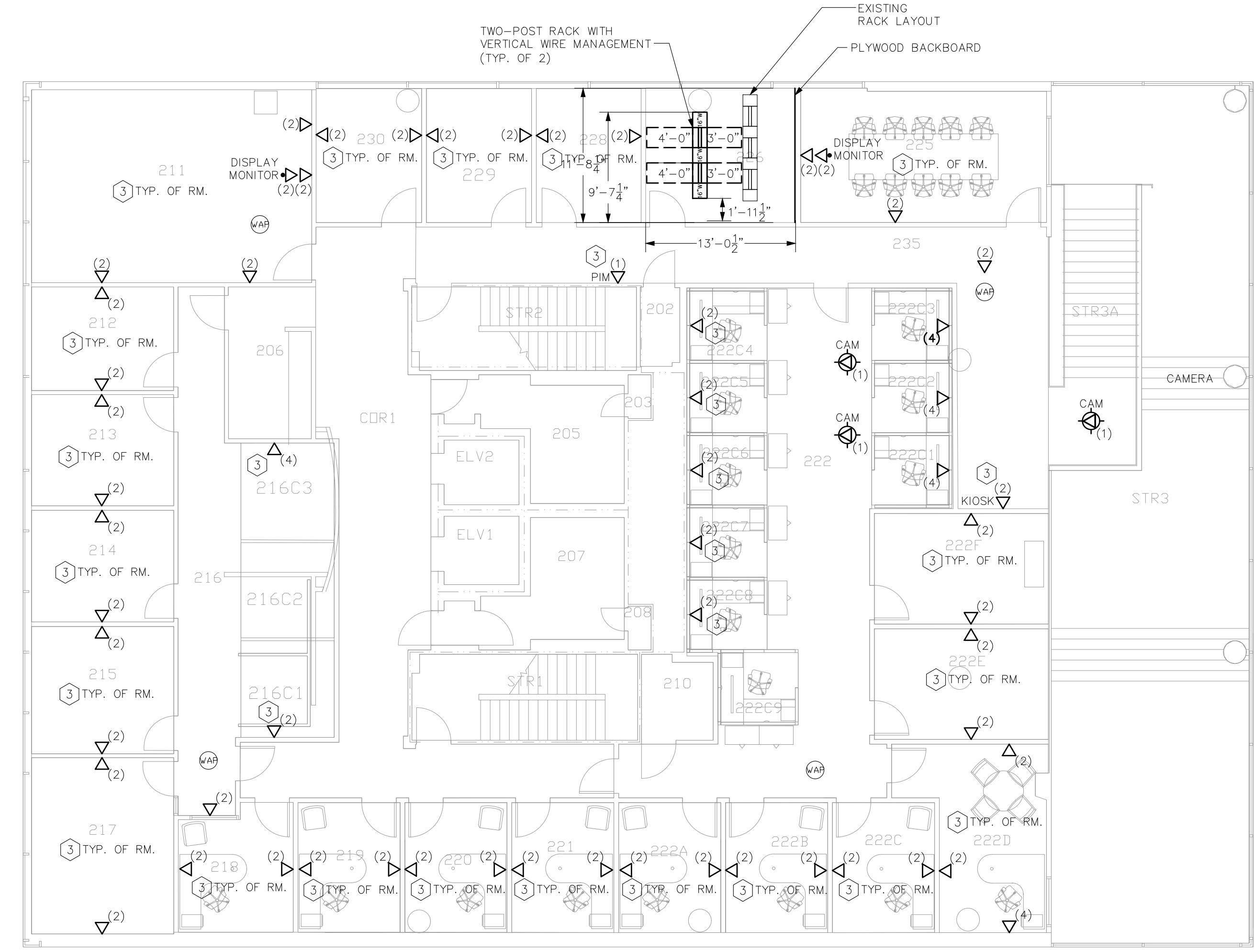


GENERAL NOTE:
A. ROUTE ALL CABLING ON THIS LEVEL TO IDF 116A.

1 REESE - LEVEL 1
1/8" = 1'-0"

NETWORK LOCATIONS	DROP NETWORK CABLES	WAP LOCATIONS	WAP CABLES
54	116	6	11

* ELECTRICAL CONTRACTOR SHALL PROVIDE JUNCTION BOX AND CONDUIT AS NOTED ON SYMBOL SCHEDULE.

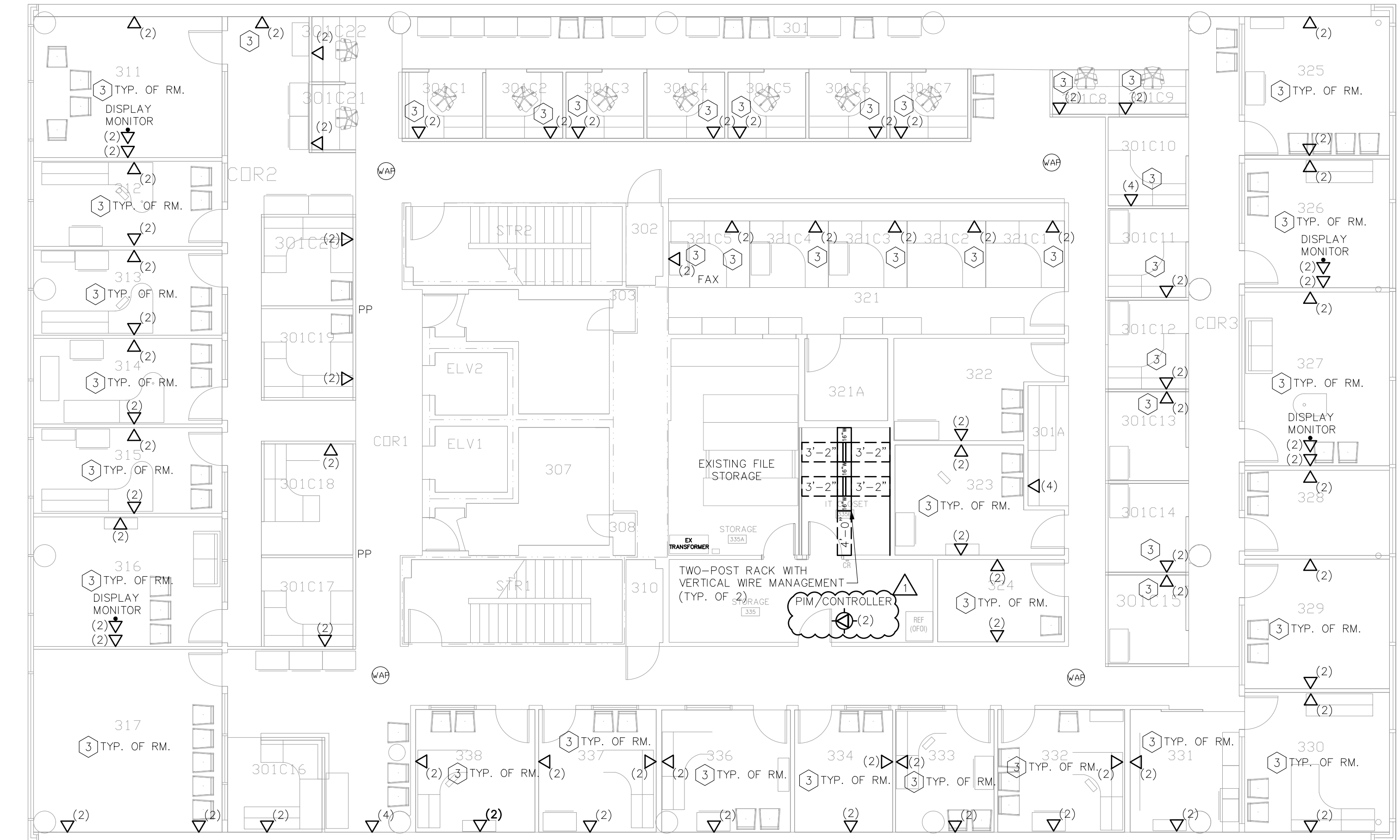


GENERAL NOTE:
A. ROUTE ALL CABLING ON THIS LEVEL TO MDF 226.

NETWORK LOCATIONS	DROP NETWORK CABLES	WAP LOCATIONS	WAP CABLES
56	109	4	8

* ELECTRICAL CONTRACTOR SHALL PROVIDE JUNCTION BOX AND CONDUIT AS NOTED ON SYMBOL SCHEDULE.

1 REESE - LEVEL 2
1/8" = 1'-0"



GENERAL NOTE:
A. ROUTE ALL CABLING ON THIS LEVEL TO IDF 335A.

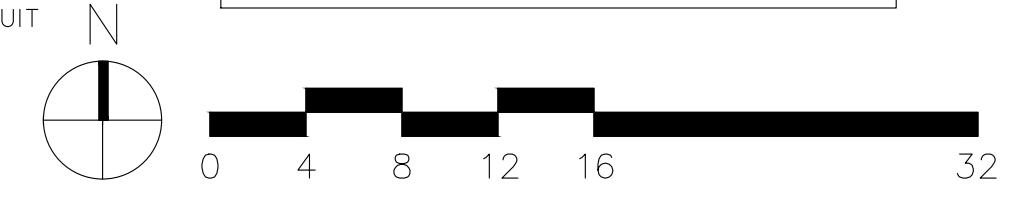
NETWORK LOCATIONS	DROP NETWORK CABLES	WAP LOCATIONS	WAP CABLES
78	158	4	8

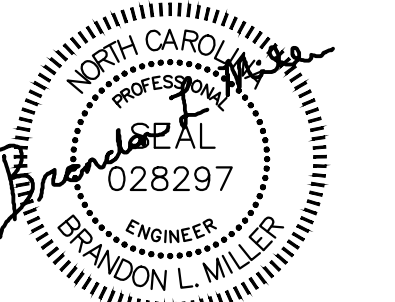
* ELECTRICAL CONTRACTOR SHALL PROVIDE JUNCTION BOX AND CONDUIT AS NOTED ON SYMBOL SCHEDULE.

1 REESE - LEVEL 3
1/8" = 1'-0"

---	1 HOUR FIRE BARRIER
---	2 HOUR FIRE BARRIER

REFER TO ARCHITECTURAL DRAWINGS FOR COMPLETE WALL CONSTRUCTION AND RATING INFORMATION.





11/01/19



**UNC CHARLOTTE
IT INFRASTRUCTURE
UPGRADES - STORRS,
ROWE & REESE
BUILDINGS**

SCO ID #: 18-19671-02A

TAG	DESCRIPTION	DATE
△	ADDENDUM #03	12/09/2019

Project: 19-0016
Drawn By: TMC
Checked By: BLM

11-01-2019

**REESE - FLOOR
PLANS - TELECOM**

ALTERNATE #2 -
REESE BUILDING
(9035 UNIVERSITY RD.)

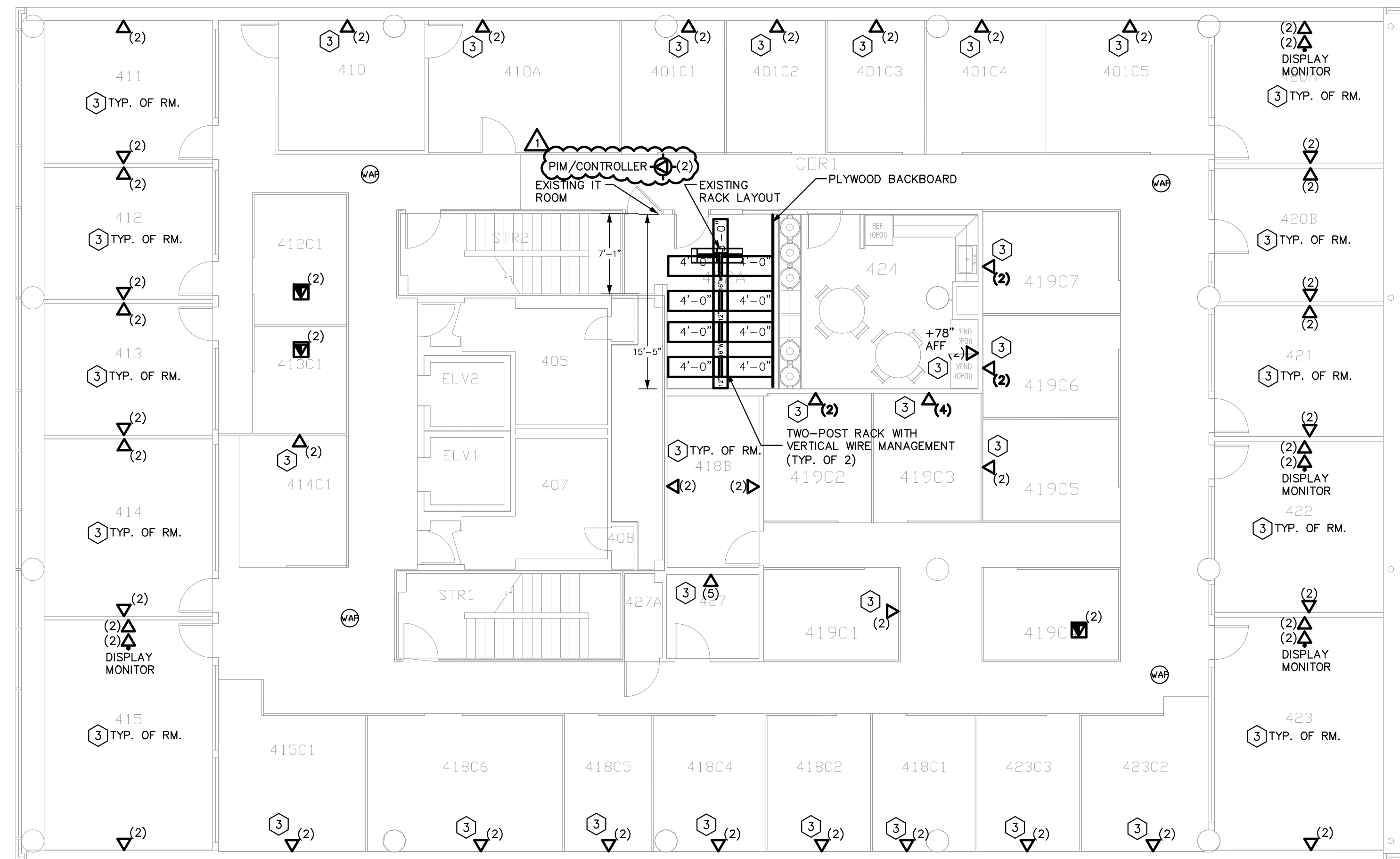
CONSTRUCTION
DOCUMENTS

TC3.02

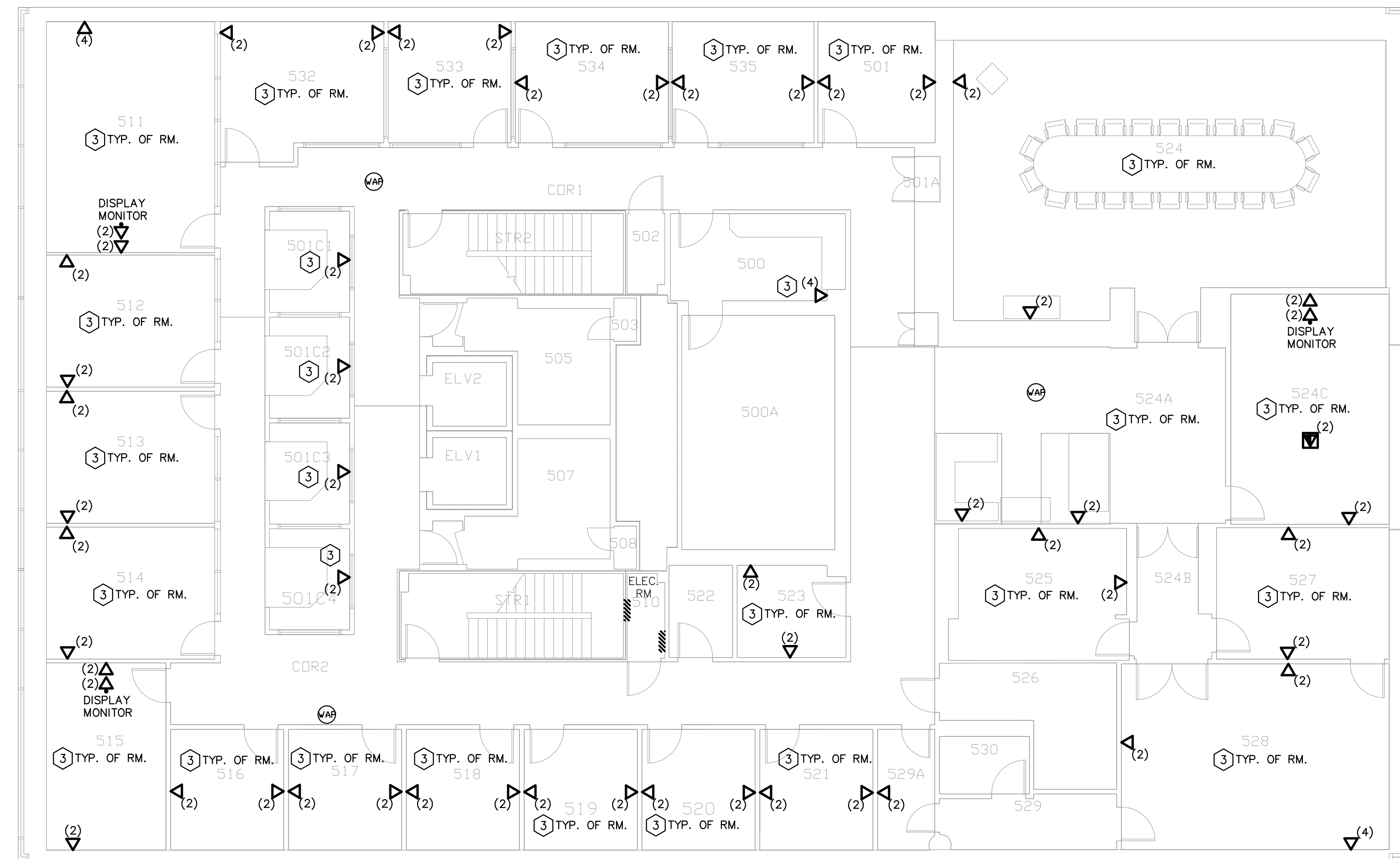
RATED WALL LEGEND

---	1 HOUR FIRE BARRIER
----	2 HOUR FIRE BARRIER

REFER TO ARCHITECTURAL DRAWINGS FOR COMPLETE WALL CONSTRUCTION AND RATING INFORMATION.



GENERAL NOTE:
A. ROUTE ALL CABLING ON THIS LEVEL TO IDF 402.



GENERAL NOTE:
A. ROUTE ALL CABLING ON THIS LEVEL TO IDF 402 ON LEVEL 4.

REESE - LEVEL 4
1/8" = 1'-0"

**CABLE COUNT SCHEDULE
IDF 402**

NETWORK LOCATIONS	DROP CABLES	NETWORK CABLES	WAP LOCATIONS	WAP CABLES
48		103	4	8

**CABLE COUNT SCHEDULE
FIFTH FLOOR**

NETWORK LOCATIONS	DROP CABLES	NETWORK CABLES	WAP LOCATIONS	WAP CABLES
55		112	3	8

CONTRACTOR SHALL PROVIDE NETWORK DROPS AS INDICATED ON PLANS. CABLE COUNT SCHEDULE IS FOR REFERENCE ONLY.

RACEWAY NOTES

- ELECTRICAL CONTRACTOR SHALL PROVIDE LEGRAND WIREMOLD 2300 SERIES RACEWAY AND SIMON MAX MOUNT ENCLOSURE MX-MMO-02, FOR SURFACE MOUNTED WALL APPLICATION. RACEWAY AND ENCLOSURE COLOR SHALL BE WHITE.
- ELECTRICAL CONTRACTOR SHALL PROVIDE LEGRAND WIREMOLD 2300 SERIES RACEWAY AND 1-GANG 2348 DEVICE BOX. STRUCTURED CABLING CONTRACTOR SHALL PROVIDE SIMON WALL PHONE PLATE, MX-WP-26A-SS.
- ELECTRICAL CONTRACTOR SHALL PROVIDE LEGRAND WIREMOLD 2300 SERIES RACEWAY AND 2-GANG EXTRA DEEP 2344-2 DEVICE BOX. STRUCTURED CABLING CONTRACTOR SHALL PROVIDE SIMON SIX PORT FACEPLATE, 10GMX-FPD06-02.

REESE - LEVEL 5
1/8" = 1'-0"