

# BIOINFORMATICS FOURTH FLOOR BUILD-OUT

The University of North Carolina at Charlotte

CMR PRE-SUBMITTAL CONFERENCE 01.21.2020



UNC CHARLOTTE

# MEETING AGENDA

**PART I: GENERAL INFORMATION**

**PART II: SUBMITTAL REQUIREMENTS**

**PART III: PROJECT OVERVIEW**

**PART IV: QUESTIONS**

CMR PRE-SUBMITTAL CONFERENCE 01.21.2020



UNC CHARLOTTE

# GENERAL

- WELCOME
- INTRODUCTIONS
- QUESTIONS:

**ELIZABETH FRERE**

OFFICE PHONE: **704-687-0558**

EMAIL: [EFRERE@UNCC.EDU](mailto:EFRERE@UNCC.EDU)

- **UPDATES:**

[HTTP://FACILITIES.UNCC.EDU/ADVERTISEMENTS](http://facilities.uncc.edu/advertisements)

- PRESENTATION WILL BE POSTED AT ABOVE LINK



# SUBMITTAL

## SCHEDULE

- SUBMITTAL DUE: **JANUARY 29, 2020 AT 2:00 PM**
- SHORTLISTING COMPLETE: MID FEBRUARY
- INTERVIEWS SCHEDULED: MARCH 2020
- FINAL SELECTION: END OF MARCH 2020
- PRE-CONSTRUCTION SERVICES BEGIN: MARCH 2020



# SUBMITTAL

## FORMAT

- NO LARGER THAN 12 ½” HEIGHT X 9 ½” WIDTH
- PROVIDE FIVE (5) PRINTED COPIES & ONE (1) DIGITAL
- 50 PAGE LIMIT (OR 25 DOUBLE SIDED PAGES)
  - DOES NOT INCLUDE: COVERS, TABS, BLANK PAGES, CARDSTOCK BACKS, ETC.
- PAGE COUNT DERIVED FROM DIGITAL COPY, OMIT ALL BLANK PAGES FROM DIGITAL VERSION
- SF 330 IS REQUIRED FOR PORTIONS OF THE SUBMITTAL.

**DOWNLOAD FORM AT:**

**[HTTP://WWW.GSA.GOV/PORTAL/FORMS/DOWNLOAD/116486](http://www.gsa.gov/portal/forms/download/116486)**

---

# SUBMITTAL

## ORGANIZATION

### I. OPTIONAL COVER LETTER

### II. TABLE OF CONTENTS

### III. QUALIFICATIONS QUESTIONNAIRE

- ✓ PROJECT TITLE
- ✓ PROPOSER NAME
- ✓ PROFILE OF PROPOSER
- ✓ PROJECT EXPERIENCE
- ✓ ATTACHMENTS



# SUBMITTAL

## QUALIFICATIONS QUESTIONNAIRE

- **PROJECT TITLE**
  - **PROPOSER NAME**
  - **PROFILE OF PROPOSER**
  - **PROJECT EXPERIENCE**
    - LIST AT LEAST 3 AND UP TO 10 PROJECTS OF SIMILAR SIZE AND COMPLEXITY
    - USE SF 330 PART I, SECTION F, SUB-SECTIONS 20-24 (OMIT SUB-SECTION 25). SEPARATE SECTION F FOR EACH PROJECT.
    - PROVIDE REQUESTED INFORMATION FOR ITEMS B-D IN SF 330 PART I, SECTION F, SUB-SECTION 24 (INCLUDE AT LEAST ONE PHOTO PER PROJECT)
    - PROVIDE ONE SF 330 PART I, SECTION G FORM, WITH SUB-SECTIONS 26-29
-

# SUBMITTAL SELECTION CRITERIA

SUBMITTALS MUST CLEARLY PROVIDE INFORMATION FOR EACH OF THE TEN CATEGORIES:

- 1) WORKLOAD THAT CAN ACCOMMODATE THE ADDITION OF THIS PROJECT.
  - 2) RECORD OF SUCCESSFULLY COMPLETED PROJECTS OF SIMILAR SIZE & SCOPE WITHOUT LEGAL OR TECHNICAL PROBLEMS.
  - 3) PREVIOUS EXPERIENCE WITH THE PUBLIC OWNER, A GOOD WORKING RELATIONSHIP WITH OWNER REPRESENTATIVES, PROJECTS COMPLETED IN A TIMELY MANNER AND AN ACCEPTABLE QUALITY OF WORK.
  - 4) KEY PERSONNEL THAT HAVE APPROPRIATE CONTRACT EXPERIENCE AND QUALIFICATIONS.
  - 5) RELEVANT AND EASILY UNDERSTOOD GRAPHIC OR TABULAR PRESENTATIONS.
  - 6) COMPLETION OF CONSTRUCTION MANAGER AT RISK PROJECTS IN WHICH THERE WERE FEW DIFFERENCES BETWEEN THE GUARANTEED MAXIMUM PRICE AND FINAL COST.
-



# SUBMITTAL SELECTION CRITERIA

SUBMITTALS MUST CLEARLY PROVIDE INFORMATION FOR EACH OF THE TEN CATEGORIES:

- 7) PROJECTS THAT WERE COMPLETED ON OR AHEAD OF SCHEDULE.
  - 8) RECENT EXPERIENCE SUCCESSFULLY MANAGING PROJECT COSTS AND SCHEDULES.
  - 9) CONSTRUCTION ADMINISTRATION CAPABILITIES.
  - 10) PROXIMITY TO AND FAMILIARITY WITH THE AREA WHERE THE PROJECT IS LOCATED.
  - 11) QUALITY OF COMPLIANCE PLAN FOR MINORITY BUSINESS PARTICIPATION AS REQUIRED BY G.S.143-128.2
  - 12) EXPERIENCE MANAGING PROJECTS IN OCCUPIED BUILDINGS.
  - 13) EXPERIENCE MANAGING ACADEMIC SCIENCE RESEARCH LABORATORIES.
  - 14) OTHER FACTORS THAT MAY BE APPROPRIATE FOR THE PROJECT,  
**FOR EXAMPLE: ACADEMIC SCIENCE RESEARCH LABS FACILITIES FOR HIGHER EDUCATION.**
-

# SUBMITTAL

## QUALIFICATIONS QUESTIONNAIRE

- **KEY PERSONNEL**

- PROVIDE INFORMATION REQUIRED IN ITEMS A-D
- USE SF 330 PART I, SECTION E TO PROVIDE RESUMES AND REFERENCE INFORMATION. INCLUDE SEPARATE SECTION E FORM FOR EACH RESUME (INCLUDE RESUMES IN ATTACHMENT D OF SUBMITTAL).
- FOR ITEM E PROVIDE ORGANIZATIONAL CHART (INCLUDE IN ATTACHMENT E OF SUBMITTAL)

- **PROJECT PLANNING**

- PROVIDE INFORMATION REQUIRED IN ITEMS A-B

- **ATTEST QUESTIONNAIRE**

- **VERIFICATION FORM**



# SUBMITTAL

## QUALIFICATIONS QUESTIONNAIRE

- **PROVIDE ATTACHMENTS IN THIS ORDER:**

- **ATTACHMENT A:** COPY OF STATE OF NC CONTRACTOR'S LICENSE
  - **ATTACHMENT B:** LETTER FROM SURETY COMPANY
  - **ATTACHMENT C:** SWORN STATEMENT (LISTED PERSONNEL WILL BE EXCLUSIVELY ASSIGNED TO THIS PROJECT FOR THE DURATION)
  - **ATTACHMENT D:** RESUMES (USE SF 330 PART I, SECTION E)
  - **ATTACHMENT E:** ORGANIZATIONAL CHART
  - **FINANCIALS** (BALANCE SHEET AND INCOME STATEMENT IF AVAILABLE)  
**TO BE SUBMITTED SEPARATELY IN A SEALED ENVELOPE AS A SINGLE COPY.**  
**WILL NOT COUNT TOWARDS THE 50 PAGES!**
-

# CMR

## REQUIREMENTS

### **SUB-CONTRACTOR PRE-QUALIFICATION**

- NC STATE PRE-QUALIFICATION PROCEDURES AND FORMS:  
[HTTPS://NCADMIN.NC.GOV/BUSINESSES/CONSTRUCTION/FORMS-DOCUMENTS](https://ncadmin.nc.gov/businesses/construction/forms-documents)
- APPEALS PROCEDURE REQUIRES PRE-QUALIFICATION TO BE MOVED FURTHER AHEAD IN THE SCHEDULE (TO ALLOW ADEQUATE TIME FOR APPEALS PRIOR TO BIDDING)

### **HUB PARTICIPATION**

- GOAL FOR THIS PROJECT IS 10%



# PROJECT OVERVIEW

## BUDGET

- **THE TOTAL BUDGET IS \$10.5M, WHICH INCLUDES:**
  - a. DESIGN FEES
  - b. FURNISHINGS (FURNITURE, AV EQUIPMENT, TELECOM, AND FIXED EQUIPMENT)
  - c. IT INFRASTRUCTURE
  - d. CONSTRUCTION
  - e. SOFT COSTS
  - f. ASSOCIATED UTILITY INFRASTRUCTURE AND CONTROLS INTEGRATION, IMPROVEMENTS, AND COMMISSIONING
- **ESTIMATED CONSTRUCTION BUDGET: \$7.4M**



# PROJECT OVERVIEW

## SCOPE

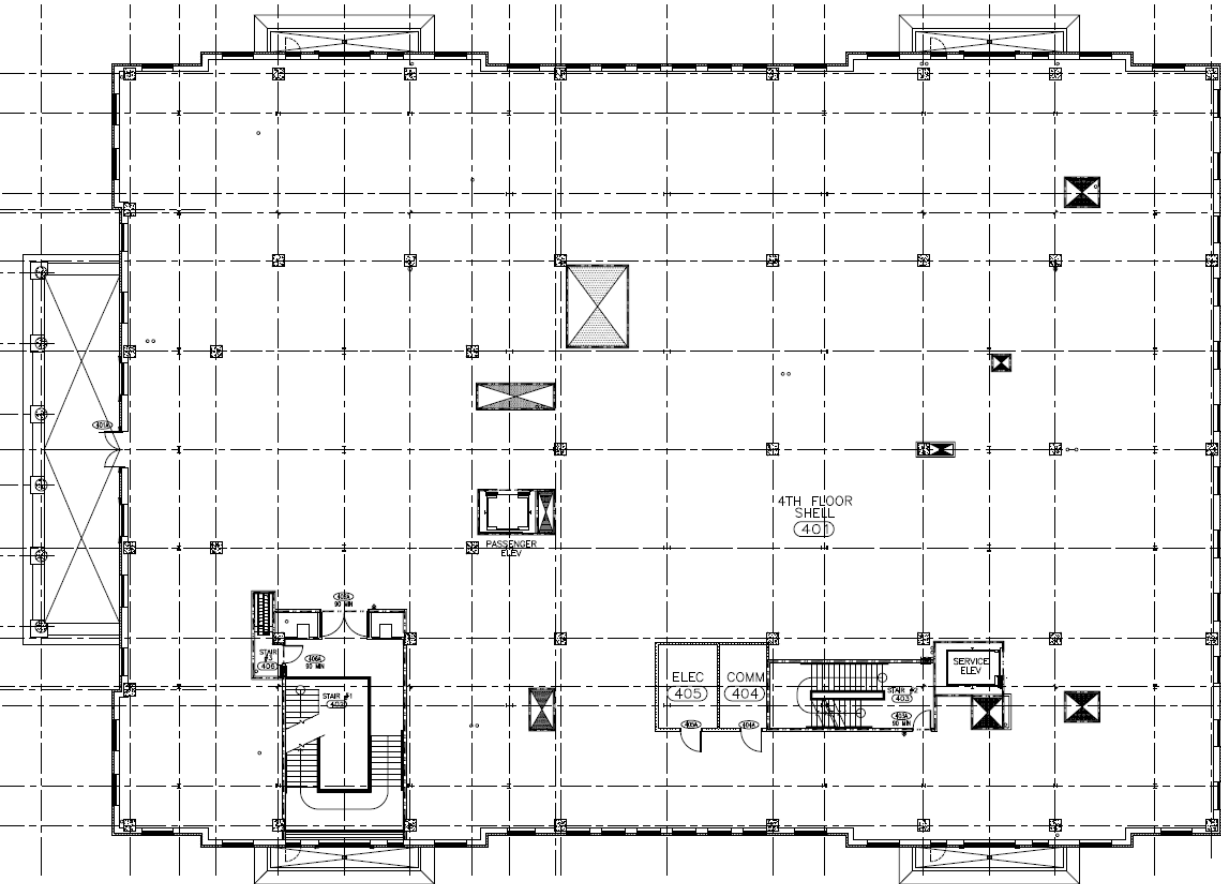
- PROJECT: BUILD-OUT APPROXIMATELY 24,000 SF OF BIOINFORMATICS 4TH FLOOR SHELL SPACE
- PURPOSES:
  1. PROVIDE INTERDISCIPLINARY RESEARCH SPACE TO SUPPORT UNC CHARLOTTE'S NEED FOR LABS AND FACULTY OFFICES.
  2. BUILD-OUT SHALL INCLUDE COMPUTATIONAL AND EXPERIMENTAL RESEARCH LABS, LAB SUPPORT SPACE, FACULTY OFFICES, AND SPACE FOR GRADUATE RESEARCH ASSISTANTS.
  3. AP WILL REQUIRE CONFIRMATION OF BUDGET AS IDENTIFIED IN AP REPORT.



# PROJECT OVERVIEW

## SCOPE

- Plan for the disruption of an occupied classroom and research building.
- Coordinate tie-ins to existing laboratory systems. Plumbing connections require new penetrations through existing slab, encroaching on a heavily occupied research space on 3<sup>rd</sup> Floor below.
- Plan for impact and logistics of material delivery and construction on a constricted site.



Bioinformatics 4<sup>th</sup> Floor - Existing Plan

# PROJECT OVERVIEW

## SCHEDULE

- AP COMPLETE: DECEMBER 2019
  - DESIGN COMBINED SD/DD'S AND CD'S COMPLETE: OCTOBER 2020
  - CONSTRUCTION: DECEMBER 2020 – NOVEMBER 2021
-



# QUESTIONS?



UNC CHARLOTTE