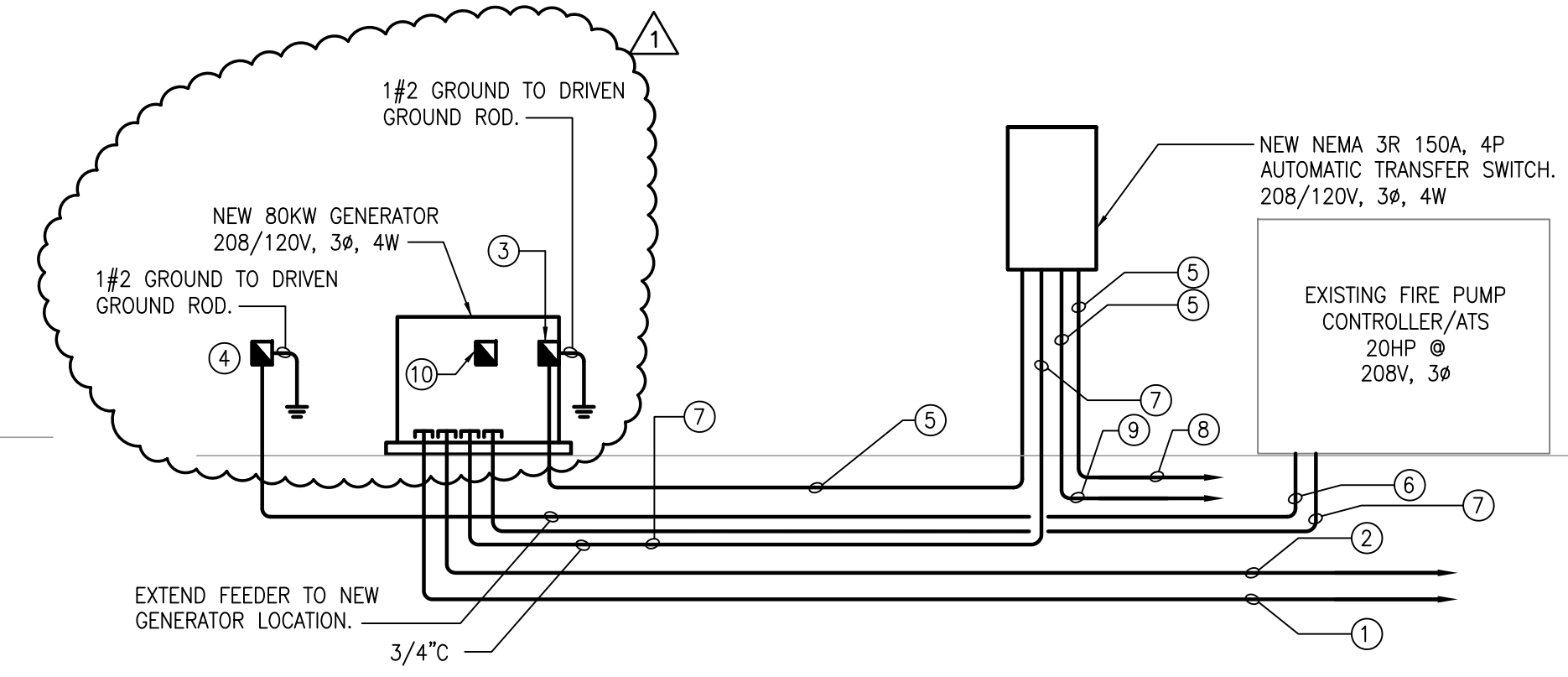
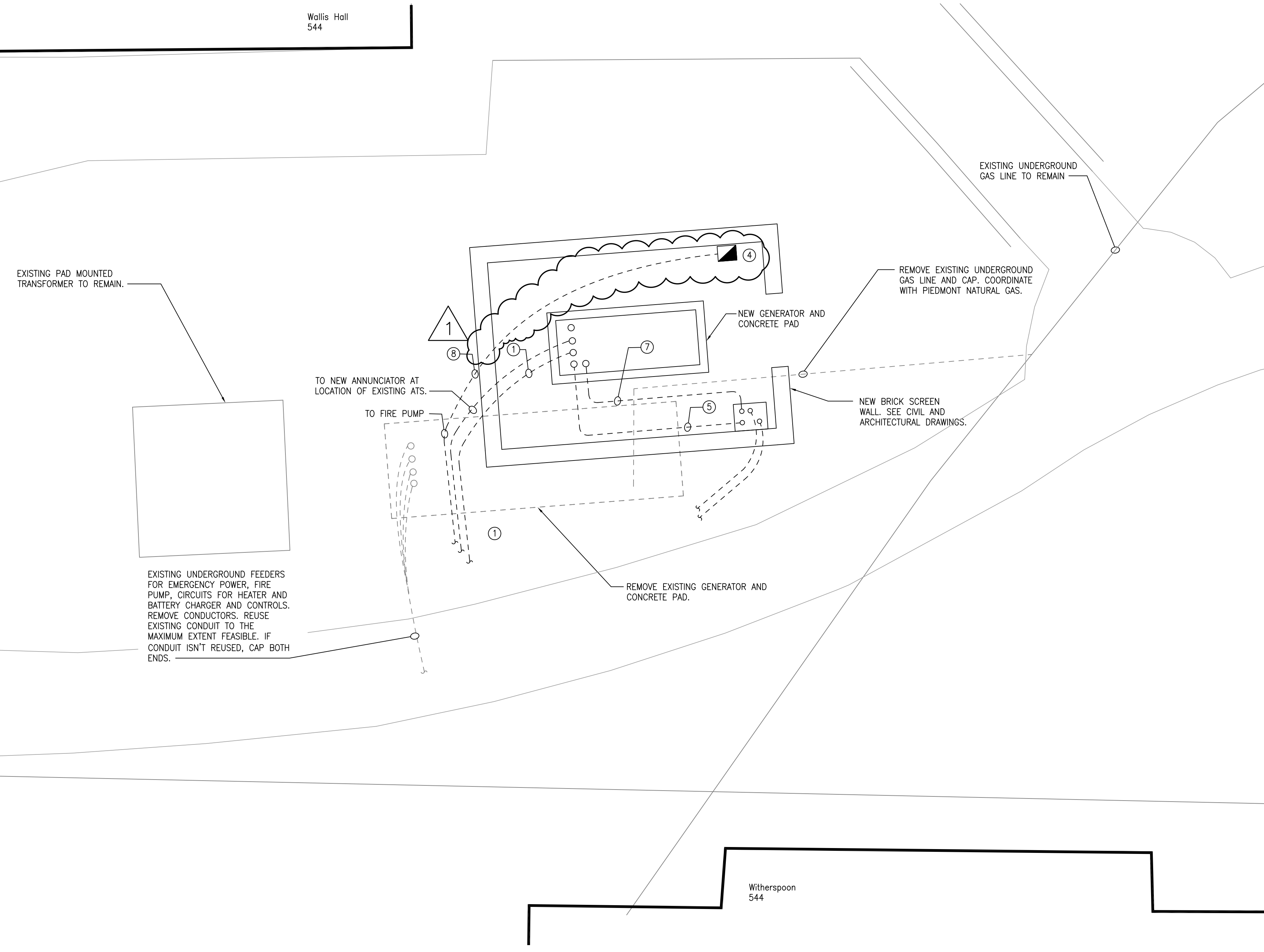


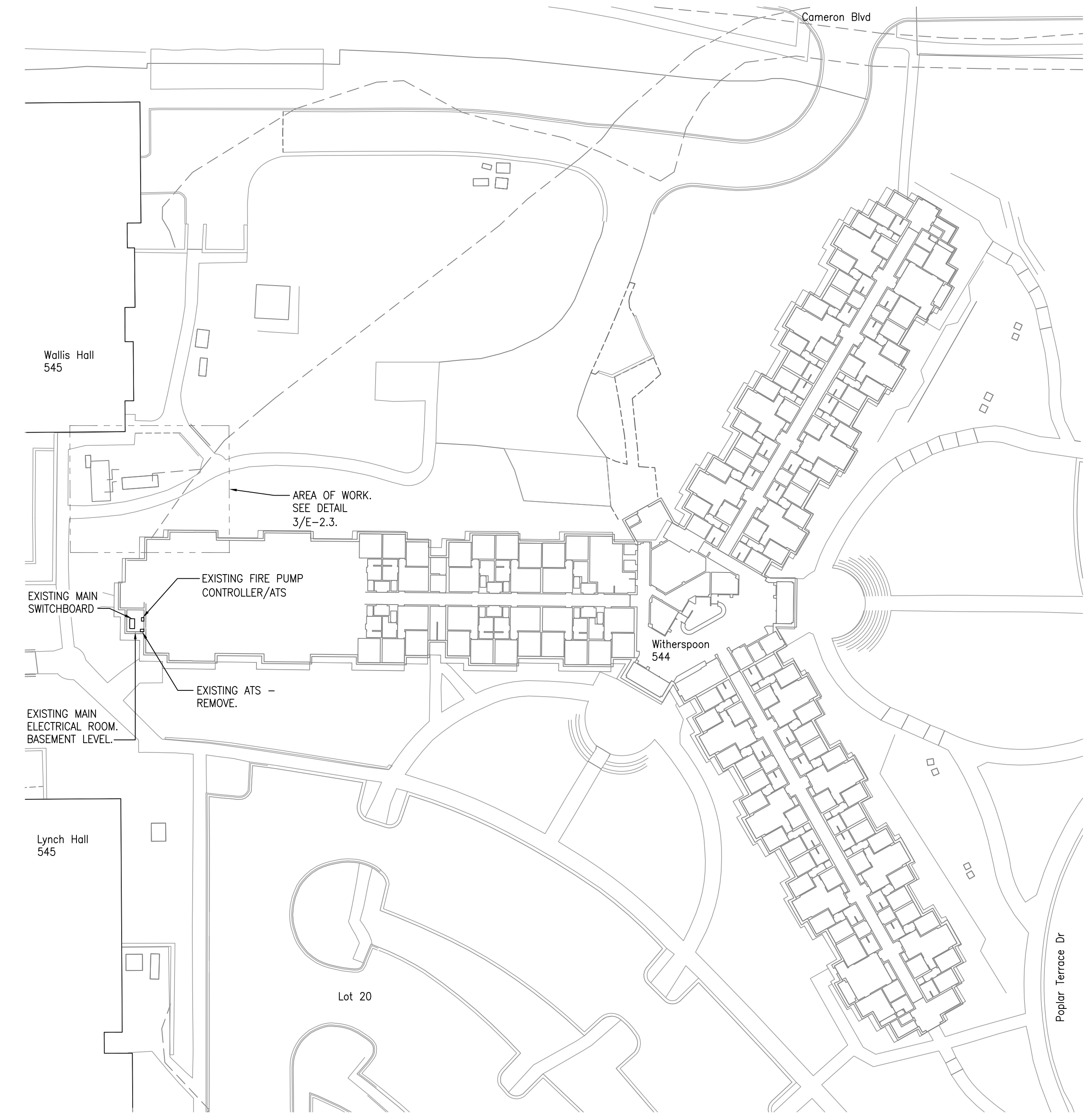
4 WITHERSPOON - DEMOLITION RISER DIAGRAM
E-2.3 SCALE: NTS



2 WITHERSPOON - NEW WORK RISER DIAGRAM
E-2.3 SCALE: NTS



3 WITHERSPOON - DEMOLITION/NEW WORK
E-2.3 SCALE: 1/4" = 1'



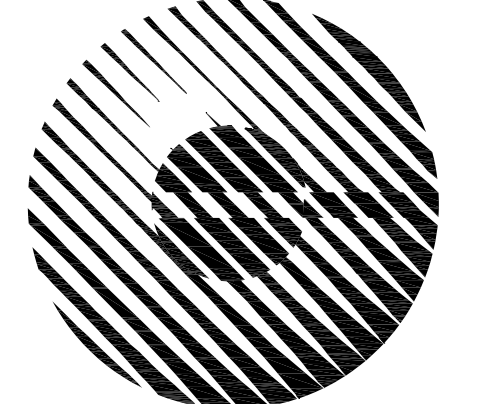
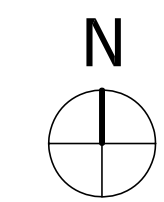
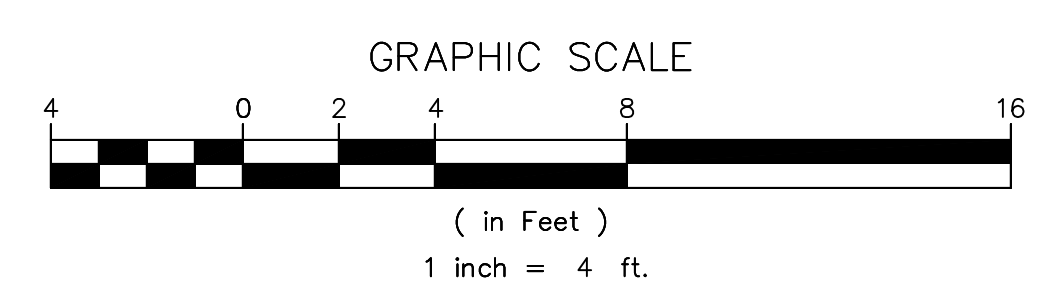
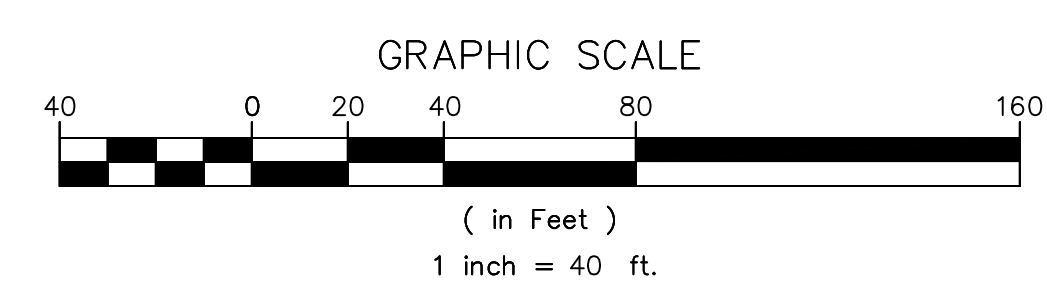
1 LOCATION PLAN
E-2.3 SCALE: 1" = 40'-0"

GENERAL NOTES

- A. PROVIDE AN ENGRAVED SIGN AT EXISTING SERVICE PANEL/SWITCHBOARD STATING: THIS IS SERVICE #1 OF 2 TOTAL. SERVICE #2 OF 2 IS LOCATED AT GENERATOR OUTSIDE ON NORTH SIDE OF BUILDING.
- B. PROVIDE A LABEL AT EMERGENCY GENERATOR THAT READS: THIS IS SERVICE #2 OF 2. SERVICE #1 OF 2 IS LOCATED IN THE MAIN ELECTRICAL ROOM.
- C. COORDINATE ALL WORK AT EACH SITE WITH THE BUILDING NAMES.
- D. ALL GENERATORS, AUTOMATIC TRANSFER SWITCHES, WIRE, CONDUIT, ETC. SHOWN ON THESE DRAWINGS SHALL BE PROVIDED BY THE CONTRACTOR.
- E. NO WORK CAN BE PERFORMED AT WITHERSPOON UNTIL AFTER 8:00AM.
- F. GENERATOR DIMENSIONS ARE SHOWN FOR REFERENCE ONLY. DIMENSIONS MAY VARY FOR DIFFERENT MANUFACTURERS. COORDINATE ACTUAL SIZE WITH MANUFACTURER.
- G. ALL EMERGENCY CIRCUITS (FEEDERS FROM GENERATOR AND ATS) SHALL BE RUN IN SEPARATE RACEWAY SYSTEM (INCLUDING PULL BOXES) FROM CONTROLS, NORMAL FEEDERS, REMOTE ANNUNCIATOR CABLES, BATTERY AND JACKET HEATER CIRCUITS, ETC.

KEYED NOTES

- 1 2#10, 1#10G, TO BATTERY CHARGER AND 2#10, 1#10G, 1" C. TO EXISTING BASIN HEATER CIRCUIT BREAKERS.
- 2 TO NEW GENERATOR REMOTE ANNUNCIATOR NEAR THE LOCATION OF THE EXISTING ATS.
- 3 NEW 150A, 3P ENCLOSED CIRCUIT BREAKER INSIDE THE GENERATOR ENCLOSURE.
- 4 NEW 200A, 3P ENCLOSED CIRCUIT BREAKER IN WEATHER PROOF ENCLOSURE FOR THE FIRE PUMP.
- 5 NEW 4#5/0, 1#6G, 2" C.
- 6 NEW 3#3/0, 1#6G, 2" C. FOR FIRE PUMP. REUSE CONDUIT TO MAXIMUM EXTENT POSSIBLE.
- 7 8#10, 1#10G, 1" C. FOR CONTROLS. REUSE CONDUIT TO MAXIMUM EXTENT POSSIBLE.
- 8 TO EXISTING MAIN SWITCHBOARD.
- 9 TO EXISTING EMERGENCY PANEL.
- 10 NEW 350A ENCLOSED CIRCUIT BREAKER FOR CONNECTION TO LOAD BANK. MOUNT INSIDE GENERATOR ENCLOSURE.
- 11 PROVIDE 1" C. WITH CONTROL WIRING FOR FIRE PUMP (NO OTHER WIRING IS PERMITTED IN THIS CONDUIT).



Charlotte Engineers, LLP
5838 Monroe Road, Suite 100
Charlotte, NC 28212
704 531 3000
NC Firm License Number:
F-0674

This document cannot be reproduced, copied, or used without written authority from Charlotte Engineers, LLP.

BS&E
BULLA SMITH
DESIGN ENGINEERING
NC Certificate of Licensure C-1863
1347 Harding Place Suite 201
Charlotte, NC 28204
704.333.3122 704.333.8252



UNC CHARLOTTE
CAMPUS WIDE EMERGENCY
GENERATOR UPGRADES
9201 UNIVERSITY CITY BLVD, CHARLOTTE, NC

Bid Documents

SCO ID #:	131210701A
CE PROJECT #:	3456
DATE:	4/20/2016
REVISIONS	DATE
ADDENDUM #1	05/03/16

THIS DRAWING IS NOT TO BE SCALED FOR CONSTRUCTION PURPOSES. THE SCALE WHEN INDICATED, IS FOR GENERAL REFERENCE ONLY.

WITHERSPOON -
ALTERNATE -
PLANS AND
PARTIAL RISER
DIAGRAM

DWN BY	MMF
CHKD BY	CRM
E-2.3	