

ADDENDUM NUMBER: 1 (One)
PROJECT: UNC Charlotte Residence Hall Phase XIV - Early Site Packages

DATE: January 27, 2015
OWNER: UNC Charlotte
ARCHITECT: FWA Group

NOTICE TO BIDDERS:

This addendum is issued prior to receipt of bids, proposals, and its contents do hereby become a part of the pricing documents for the above referenced project.

All subcontractor bidders are responsible for assuring that their subcontractors and vendors are properly apprised of the contents of this Addendum.

All information contained in this Addendum supersedes and takes precedence over any conflicting information in the original pricing documents.

All bidders must acknowledge receipt of this Addendum in the space provided on the Form of Proposal for their bid package.

GENERAL REVISIONS TO BID INFORMATION

- 1 Bid Date, Time, and Location remain the same.

REVISIONS TO DESIGN DOCUMENTS

- 1 Refer to Architect Addendum Number One (1) dated January 27, 2015 - Attached.

END OF ADDENDUM

ADDENDUM NO. 1
Residence Hall Phase XIV
University of North Carolina at Charlotte
January 27, 2015



ADDENDUM NUMBER ONE (1)

DATE: January 27, 2015

PROJECT: Resident Hall Phase XIV
University of North Carolina at Charlotte
Early Site Package
SCO ID# 12-10117-03C
Code 41026 Item 307

FWA PROJECT NUMBER: 2420.02.3

This Addendum Number One (1) forms a part of the Contract Documents, clarifies and/or modifies the original Documents for the above referenced project and subsequent Addenda, and shall take precedence over the original Contract Document drawings, specifications, schedules and other documents dated December 1, 2014 as issued by The FWA Group.

This Addendum consists of two (2) pages of written text, one (1) specification section and five (5) full size drawings.

CHANGES TO PRIOR ADDENDA:

- NA

CHANGES TO PROCUREMENT AND CONTRACTING REQUIREMENTS:

Revise the following section

00 01 10 TABLE OF CONTENTS (Add the following)

01 23 00 ALTERNATES

CHANGES TO SPECIFICATIONS GROUP

- NA

Add the following Specification Section:

a. 01 23 00 ALTERNATES

ADDENDUM NO. 1
Residence Hall Phase XIV
University of North Carolina at Charlotte
January 27, 2015

CHANGES TO DRAWINGS:

The sheets listed below (Revised by Addendum No. 1) are hereby revised and made part of the Contract Documents:

VOLUME 1 DRAWINGS

- NA

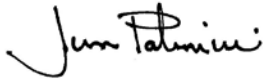
VOLUME 2 DRAWINGS

- a. S101-N NORTH FOUNDATION PLAN
- b. S201-N 1ST FLOOR NORTH FRAMING PLAN
- c. S201-S 1ST FLOOR SOUTH FONDATION AND FRAMING PLAN
- d. S202-N 2ND FLOOR NORTH FRAMING PLAN
- e. S401 FLOOR FRAMING DETAILS

VOLUME 1 DRAWINGS

- NA

END OF ADDENDUM NO. 1



Jim Palmieri, AIA
The FWA Group

SECTION 01 23 00 - ALTERNATES

PART 1 - GENERAL

1.1 RELATED DOCUMENTS

- A. Drawings and general provisions of the Contract, including General and Supplementary Conditions and other Division 01 Specification Sections, apply to this Section.

1.2 SUMMARY

- A. Section includes administrative and procedural requirements for alternates.

1.3 DEFINITIONS

- A. Alternate: An amount proposed by bidders and stated on the Bid Form for certain work defined in the bidding requirements that may be added to or deducted from the base bid amount if Owner decides to accept a corresponding change either in the amount of construction to be completed or in the products, materials, equipment, systems, or installation methods described in the Contract Documents.
 - 1. Alternates described in this Section are part of the Work only if enumerated in the Agreement.
 - 2. The cost or credit for each alternate is the net addition to or deduction from the Contract Sum to incorporate alternate into the Work. No other adjustments are made to the Contract Sum.

1.4 PROCEDURES

- A. Coordination: Revise or adjust affected adjacent work as necessary to completely integrate work of the alternate into Project.
 - 1. Include as part of each alternate, miscellaneous devices, accessory objects, and similar items incidental to or required for a complete installation whether or not indicated as part of alternate.
- B. Notification: Immediately following award of the Contract, notify each party involved, in writing, of the status of each alternate. Indicate if alternates have been accepted, rejected, or deferred for later consideration. Include a complete description of negotiated revisions to alternates.
- C. Execute accepted alternates under the same conditions as other work of the Contract.

- D. Schedule: A schedule of alternates is included at the end of this Section. Specification Sections referenced in schedule contain requirements for materials necessary to achieve the work described under each alternate.

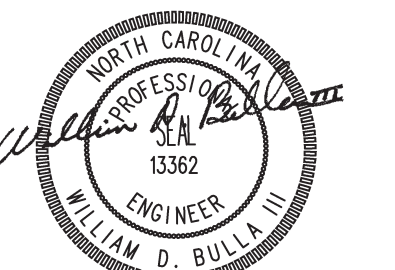
PART 2 - PRODUCTS (Not Used)

PART 3 - EXECUTION

3.1 SCHEDULE OF ALTERNATES

- A. Alternate No. 1: Floor @ Room #033 (non-occupied space/storage)
1. Base Bid: Vapor Barrier on 4" compacted granular fill.
 2. Alternate: 4" concrete slab w/reinforcing on base bid vapor barrier on 4" compacted granular fill.
- B. Alternate No. 2: Service Elevators
1. Base Bid: Elevator #1 (North) and Elevator #2 (Central) to have a 3,500 lb. passenger style cab at 150 fpm as indicated on Sheet A-700 and as specified in Section 14 21 00 "Electric Traction Elevators".
 2. Alternate: Elevator #1 (North) and Elevator #2 (Central) to have a 4,000 lb. service style cab at 200 fpm.
- C. Alternate No. 3: Hydraulic MRL Elevator @ #3 (South)
1. Base Bid: Elevator #3 (South) to be an electric traction passenger elevator with a 2500 lb. capacity at 150 fpm as indicated on Sheet A-700 and as specified in Section 14 21 00 "Electric Traction Elevators".
 2. Alternate: Elevator #3 (South) to be a machine room-less (MRL) hydraulic elevator with hydraulic fluid that is vegetable-base, non-petroleum. Size, capacity, speed, finishes, operating systems, security features, hoistway entrance, car enclosure, signal equipment, etc. to be similar to base bid.

END OF SECTION 01 23 00



FOR CONSTRUCTION

CONSTRUCTION DOCUMENTS

UNC CHARLOTTE
RESIDENCE HALL
PHASE XIV
EARLY SITE PACKAGE

UNIVERSITY OF NORTH
CAROLINA CHARLOTTE
9201 UNIVERSITY CITY BLVD.
CHARLOTTE, NC 28223

DATE	DESCRIPTION
2015-01-06	BID DOCUMENTS
2015-01-26	ADDENDUM #1

FWA PROJECT NO: 2420.02
SCO PROJECT NO: #12-10117-03C

DRAWN BY: KPM
APPROVED BY: WDB

THESE DRAWINGS AND THE PROJECT MANUAL ARE INSTRUMENTS OF SERVICE AND REMAIN THE PROPERTY OF THE FWA GROUP ARCHITECTS. UNAUTHORIZED DUPLICATION OR REUSE WITHOUT WRITTEN CONSENT IS PROHIBITED.

SHEET TITLE

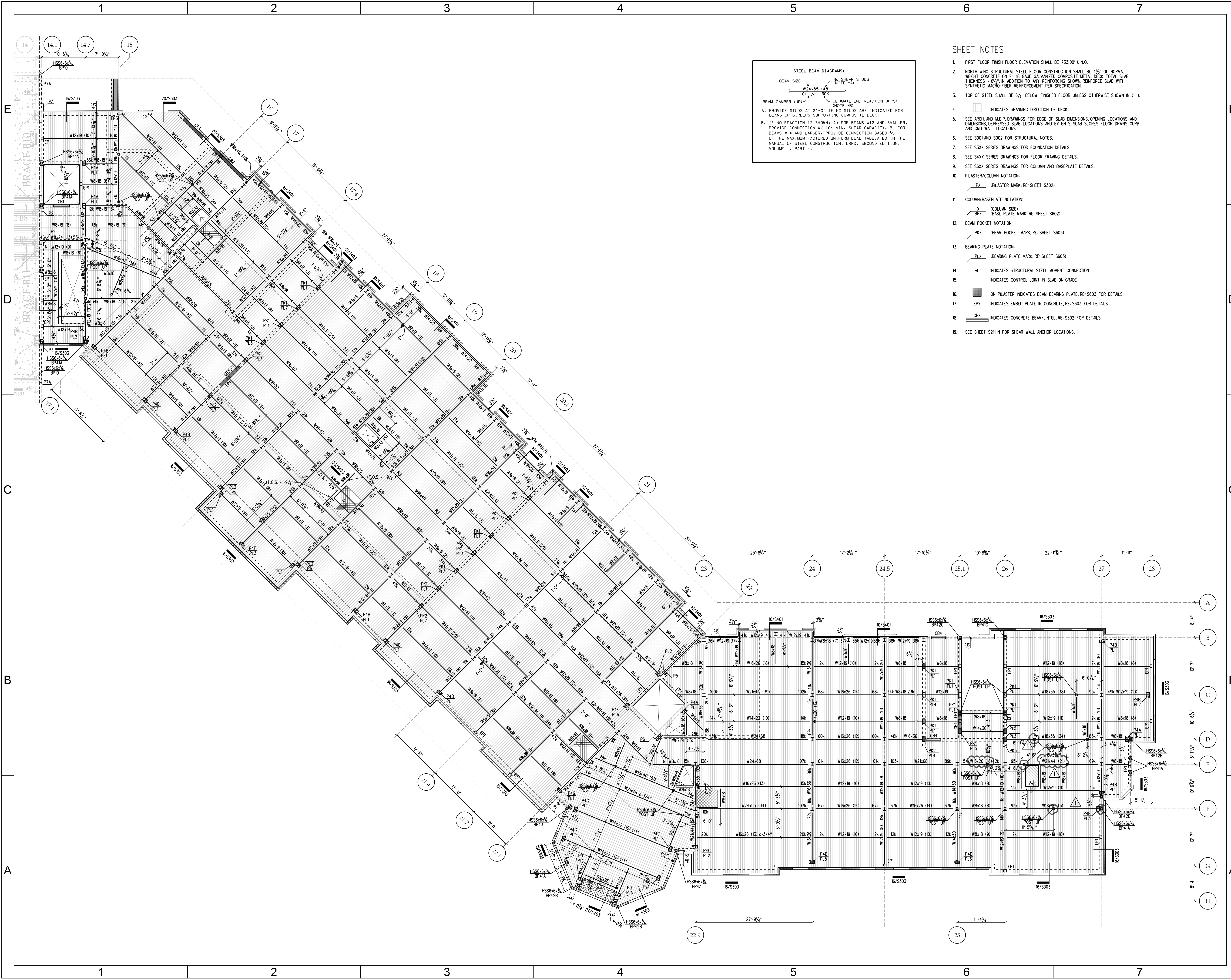
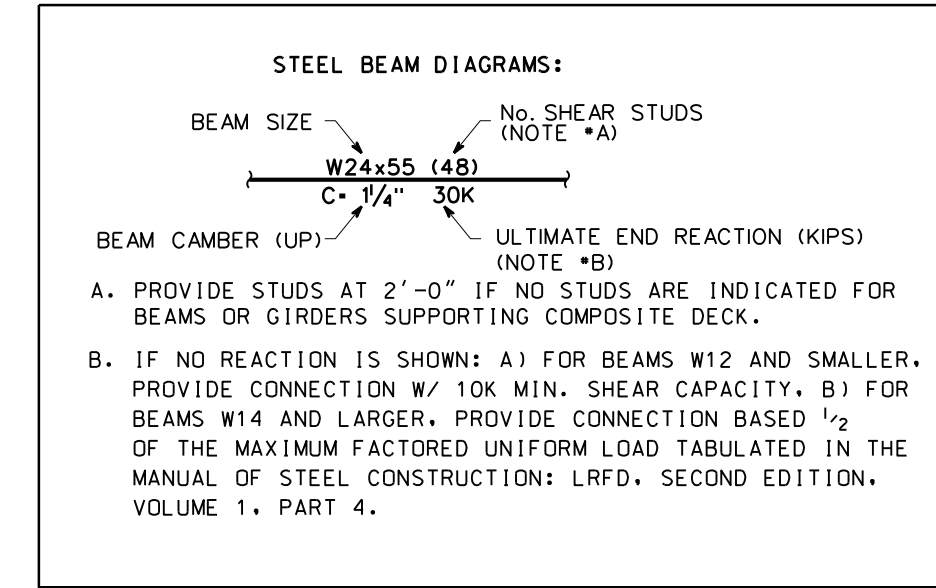
**1ST FLOOR
NORTH
FRAMING PLAN**

SHEET NUMBER

S201-N

SHEET NOTES

- FIRST FLOOR FINISH FLOOR ELEVATION SHALL BE 733.00' U.N.O.
- NORTH WING STRUCTURAL STEEL FLOOR CONSTRUCTION SHALL BE 4 1/2" OF NORMAL WEIGHT CONCRETE ON 2" 18 GAGE GALVANIZED COMPOSITE METAL DECK. TOTAL SLAB THICKNESS = 6 1/2". IN ADDITION TO ANY REINFORCING SHOWN, REINFORCE SLAB WITH SYNTHETIC MACRO-FIBER REINFORCEMENT PER SPECIFICATION.
- TOP OF STEEL SHALL BE 6/2" BELOW FINISHED FLOOR UNLESS OTHERWISE SHOWN IN ().
- INDICATES SPANNING DIRECTION OF DECK.
- SEE ARCH. AND M.E.P. DRAWINGS FOR EDGE OF SLAB DIMENSIONS, OPENING LOCATIONS AND DIMENSIONS, DEPRESSED SLAB LOCATIONS AND EXTENTS, SLAB SLOPES, FLOOR DRAINS, CURB AND CMU WALL LOCATIONS.
- SEE S001 AND S002 FOR STRUCTURAL NOTES.
- SEE S3XX SERIES DRAWINGS FOR FOUNDATION DETAILS.
- SEE S4XX SERIES DRAWINGS FOR FLOOR FRAMING DETAILS.
- SEE S6XX SERIES DRAWINGS FOR COLUMN AND BASEPLATE DETAILS.
- PLASTER/COLUMN NOTATION:
PX (PLASTER MARK, RE: SHEET S302)
- COLUMN/BASEPLATE NOTATION:
BX (COLUMN SIZE)
CBX (COLUMN SIZE)
- BEAM POCKET NOTATION:
PKX (BEAM POCKET MARK, RE: SHEET S603)
- BEARING PLATE NOTATION:
PLX (BEARING PLATE MARK, RE: SHEET S603)
- INDICATES STRUCTURAL STEEL MOMENT CONNECTION
- INDICATES CONTROL JOINT IN SLAB-ON-GRADE
- ON PLASTER INDICATES BEAM BEARING PLATE, RE: S603 FOR DETAILS
- EPX INDICATES EMBED PLATE IN CONCRETE, RE: S603 FOR DETAILS
- CBX INDICATES CONCRETE BEAM/LINTEL, RE: S302 FOR DETAILS
- SEE SHEET S211-N FOR SHEAR WALL ANCHOR LOCATIONS.



26 JAN 2015 13:48
\\BS&E02\Projects\2013\2013.23 UNCC Phase XIV\ACADD Files\ESP\SS201M.dgn

DATE	DESCRIPTION
2015-01-06	BID DOCUMENTS
2015-01-26	ADDENDUM #1

FWA PROJECT NO: 2420.02
SCO PROJECT NO: #12-10117-03C

DRAWN BY: KPM
APPROVED BY: WDB

THESE DRAWINGS AND THE PROJECT MANUAL ARE INSTRUMENTS OF SERVICE AND REMAIN THE PROPERTY OF THE FWA GROUP ARCHITECTS. UNAUTHORIZED DUPLICATION OR REUSE WITHOUT WRITTEN CONSENT IS PROHIBITED.

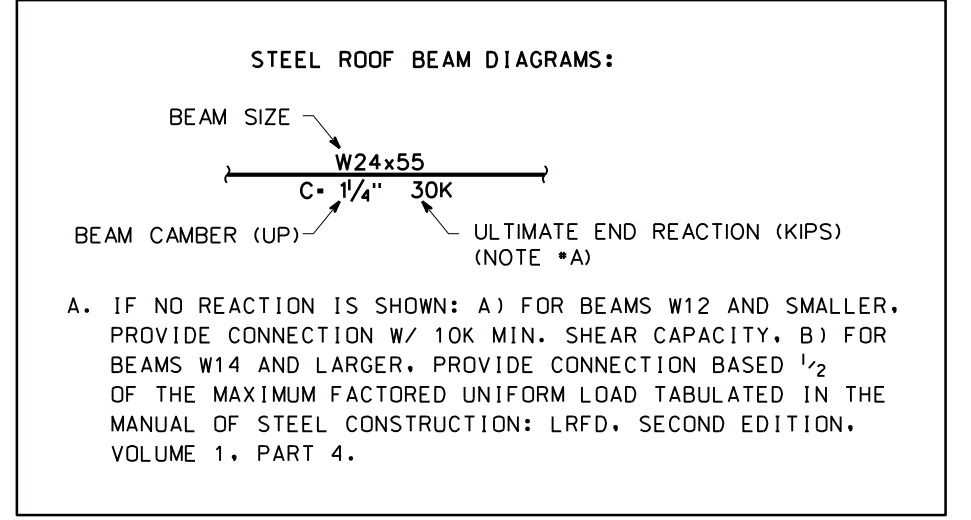
SHEET TITLE

2ND FLOOR NORTH FRAMING PLAN

SHEET NUMBER
S202-N

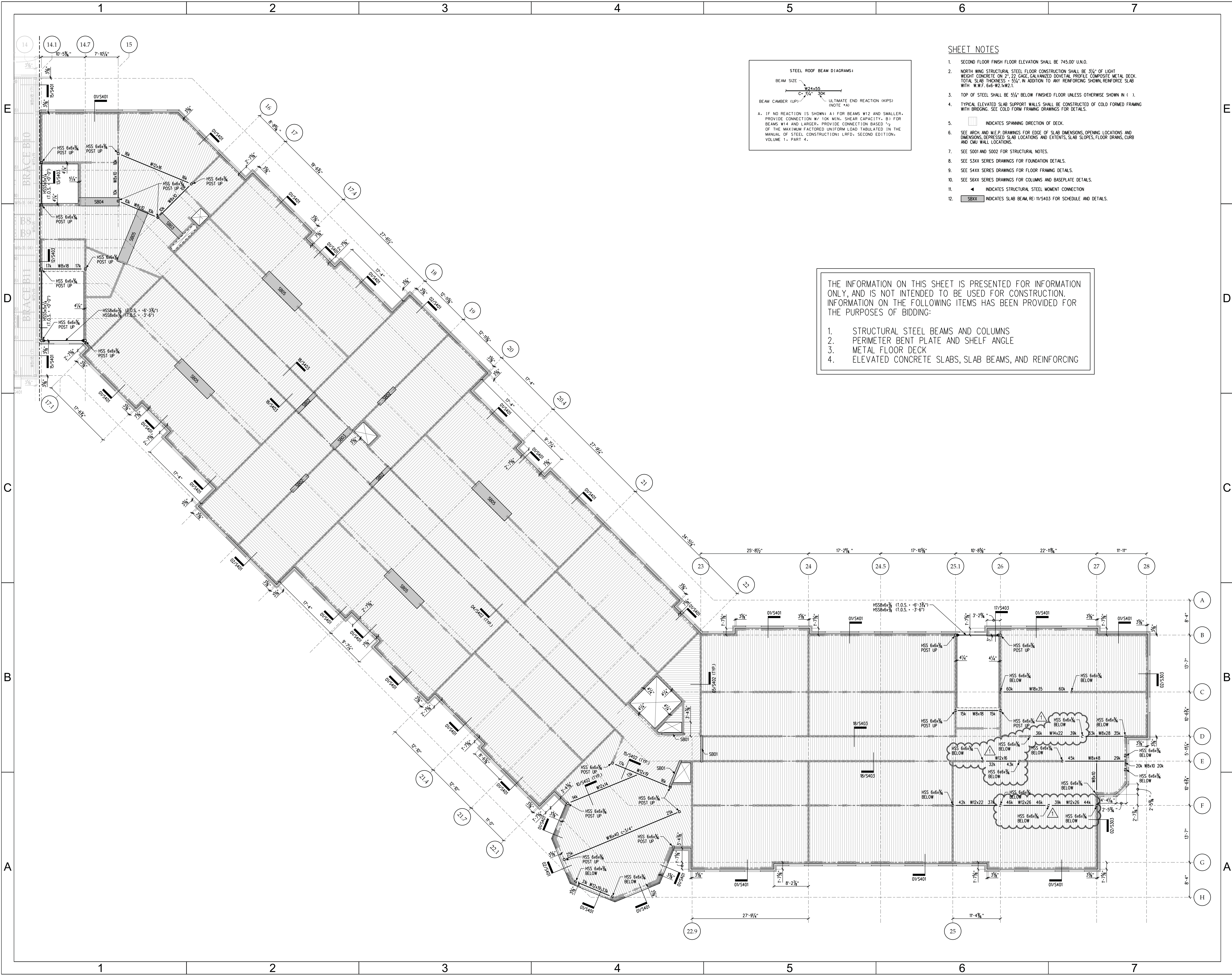
SHEET NOTES

- SECOND FLOOR FINISH FLOOR ELEVATION SHALL BE 745.00' U.N.O.
- NORTH WING STRUCTURAL STEEL FLOOR CONSTRUCTION SHALL BE 3/4" OF LIGHT WEIGHT CONCRETE ON 2" ZIG ZAG GALVANIZED DOVETAIL PROFILE COMPOSITE METAL DECK. TOTAL SLAB THICKNESS = 5/4" IN ADDITION TO ANY REINFORCING SHOWN. REINFORCE SLAB WITH W.W.F. 6x6-W2xW2.
- TOP OF STEEL SHALL BE 3/4" BELOW FINISHED FLOOR UNLESS OTHERWISE SHOWN IN ().
- TYPICAL ELEVATED SLAB SUPPORT WALLS SHALL BE CONSTRUCTED OF COLD FORMED BRICK WITH BRIDGING. SEE COLD FORM FRAMING DRAWINGS FOR DETAILS.
- INDICATES SPANNING DIRECTION OF DECK.
- SEE ARCH. AND M.E.P. DRAWINGS FOR EDGE OF SLAB DIMENSIONS, OPENING LOCATIONS AND DIMENSIONS, DERESSED SLAB LOCATIONS AND EXTENTS, SLAB SLOPES, FLOOR DRAINS, CURB AND CMU WALL LOCATIONS.
- SEE S001 AND S002 FOR STRUCTURAL NOTES.
- SEE S3XX SERIES DRAWINGS FOR FOUNDATION DETAILS.
- SEE S4XX SERIES DRAWINGS FOR FLOOR FRAMING DETAILS.
- SEE S6XX SERIES DRAWINGS FOR COLUMNS AND BASEPLATE DETAILS.
- INDICATES STRUCTURAL STEEL MOMENT CONNECTION
- INDICATES SLAB BEAM, RE: 11/S403 FOR SCHEDULE AND DETAILS.



THE INFORMATION ON THIS SHEET IS PRESENTED FOR INFORMATION ONLY, AND IS NOT INTENDED TO BE USED FOR CONSTRUCTION. INFORMATION ON THE FOLLOWING ITEMS HAS BEEN PROVIDED FOR THE PURPOSES OF BIDDING:

- STRUCTURAL STEEL BEAMS AND COLUMNS
- PERIMETER BENT PLATE AND SHELF ANGLE
- METAL FLOOR DECK
- ELEVATED CONCRETE SLABS, SLAB BEAMS, AND REINFORCING



26 JAN 2015 13:49
\\BS&E02\Projects\2013\2013.23 UNCC Phase 4\XAC\ADD Files\ESP\HS202N.dgn

DATE	DESCRIPTION
2015-01-06	BID DOCUMENTS
2015-01-26	ADDENDUM #1

FWA PROJECT NO: 2420.02
SCO PROJECT NO: #12-1017-03C

DRAWN BY: KPM
APPROVED BY: WDB

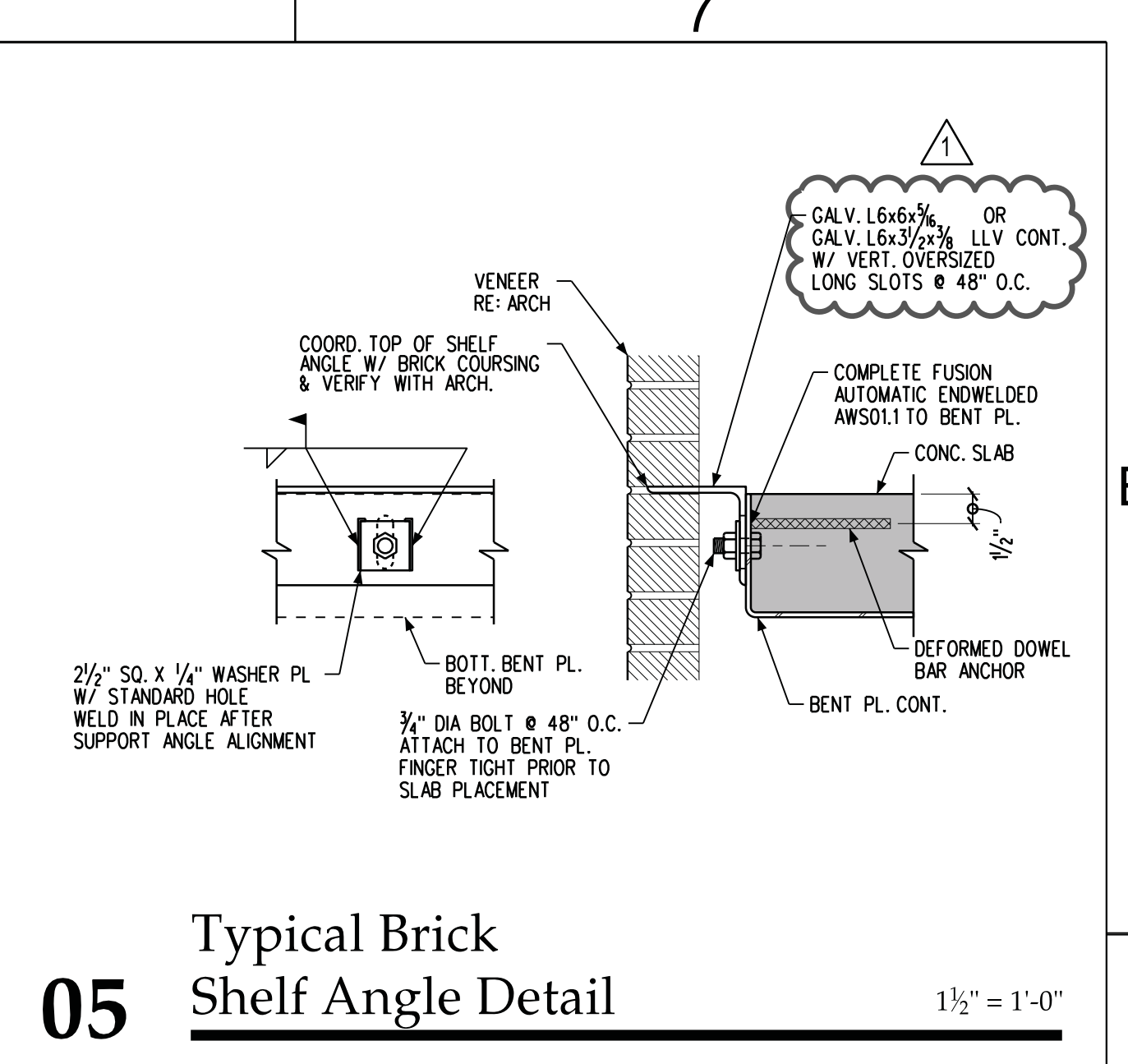
THESE DRAWINGS AND THE PROJECT MANUAL ARE INSTRUMENTS OF SERVICE AND REMAIN THE PROPERTY OF THE FWA GROUP ARCHITECTS. UNAUTHORIZED DUPLICATION OR REUSE WITHOUT WRITTEN CONSENT IS PROHIBITED.

SHEET TITLE

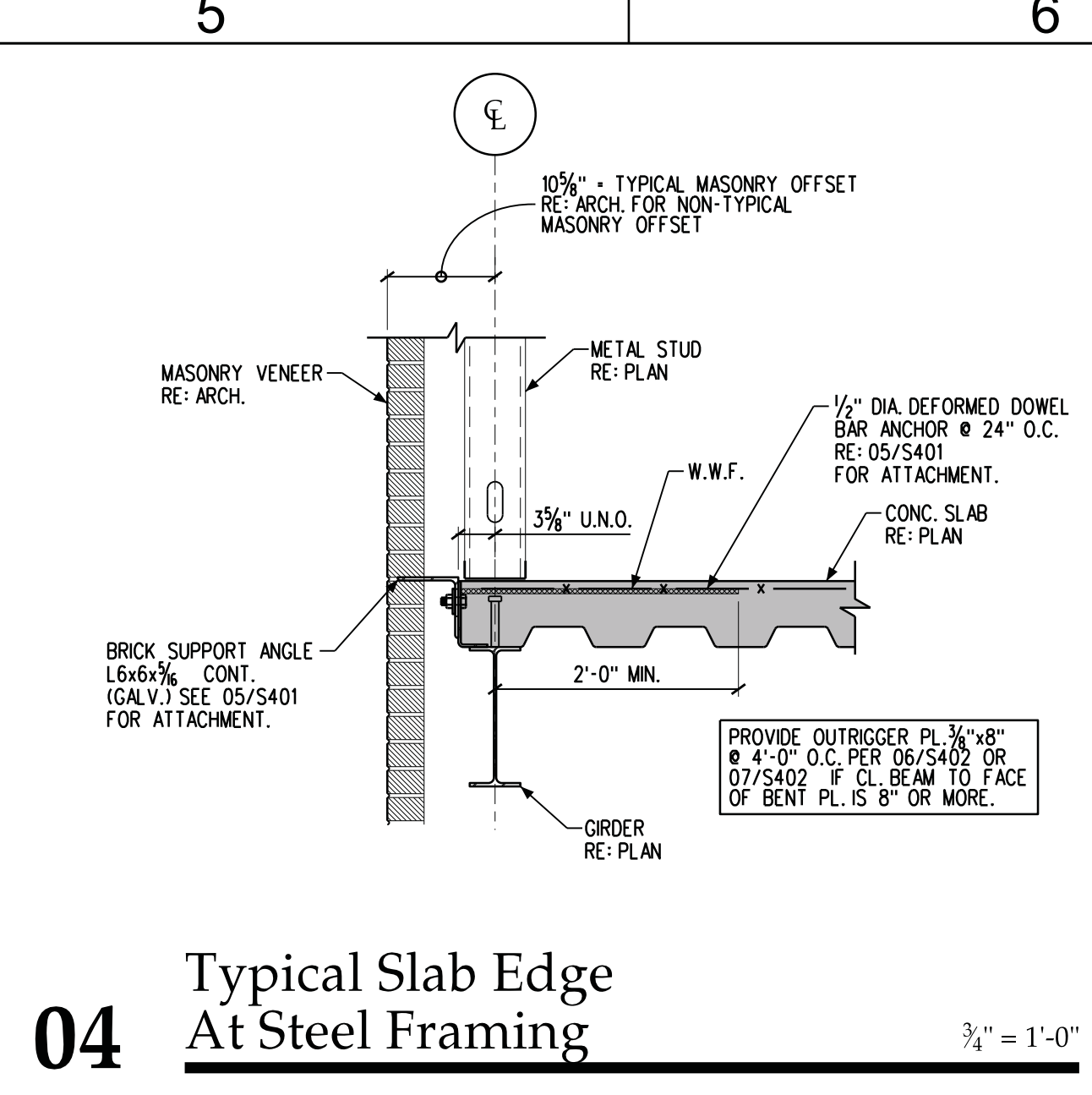
FLOOR FRAMING DETAILS

SHEET NUMBER

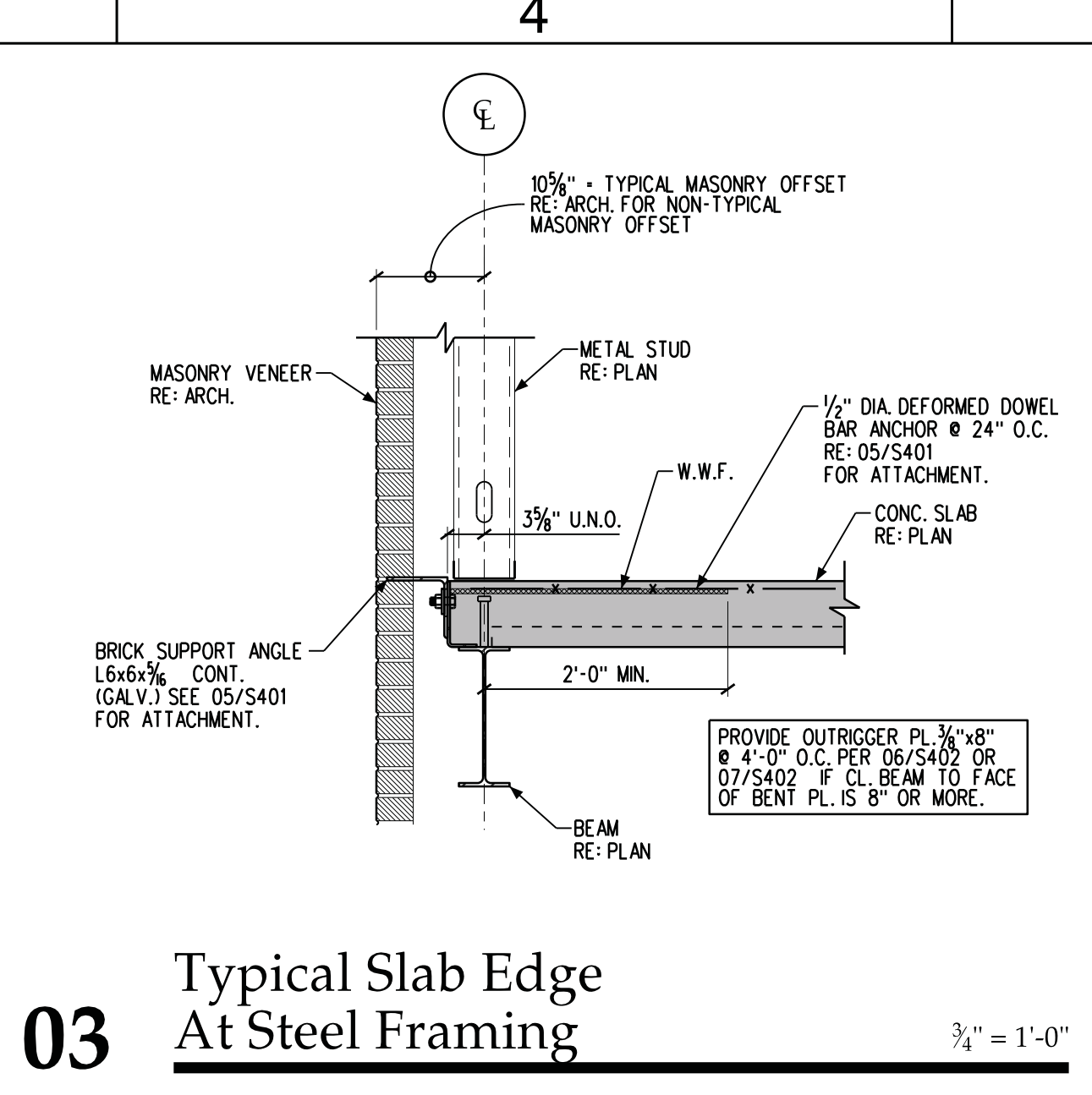
S401



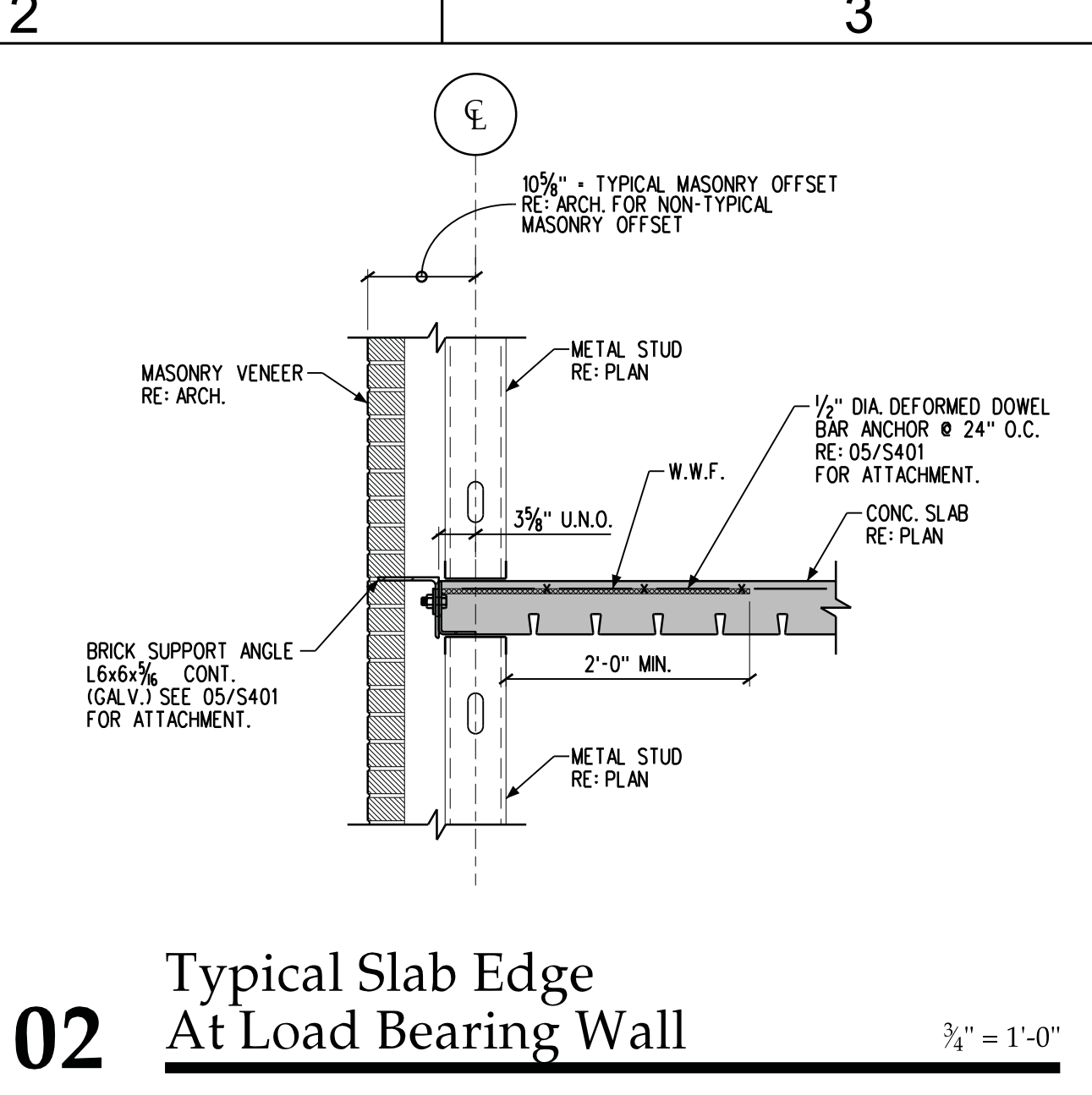
05 Typical Brick Shelf Angle Detail 1/2" = 1'-0"



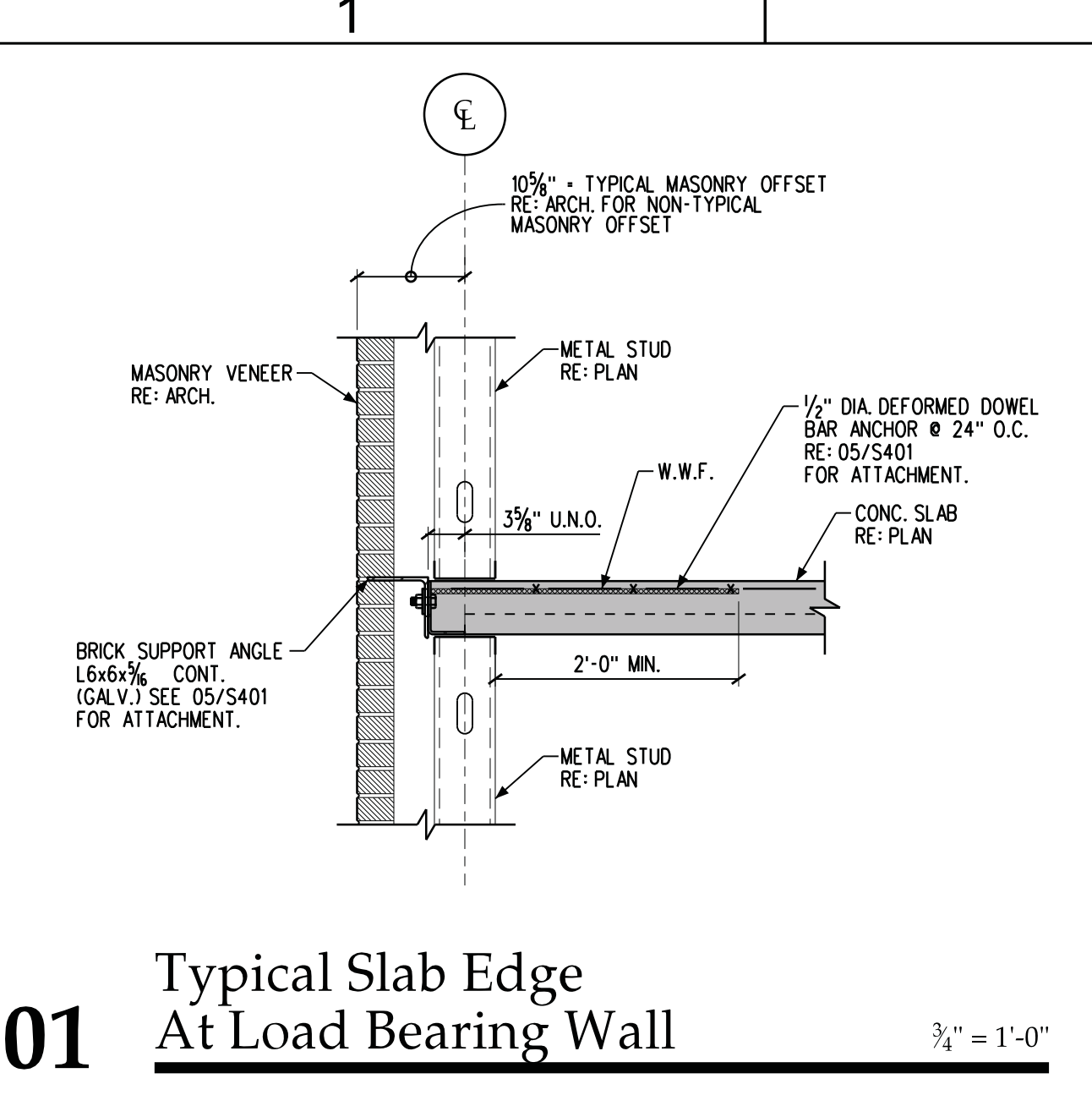
04 Typical Slab Edge At Steel Framing 3/4" = 1'-0"



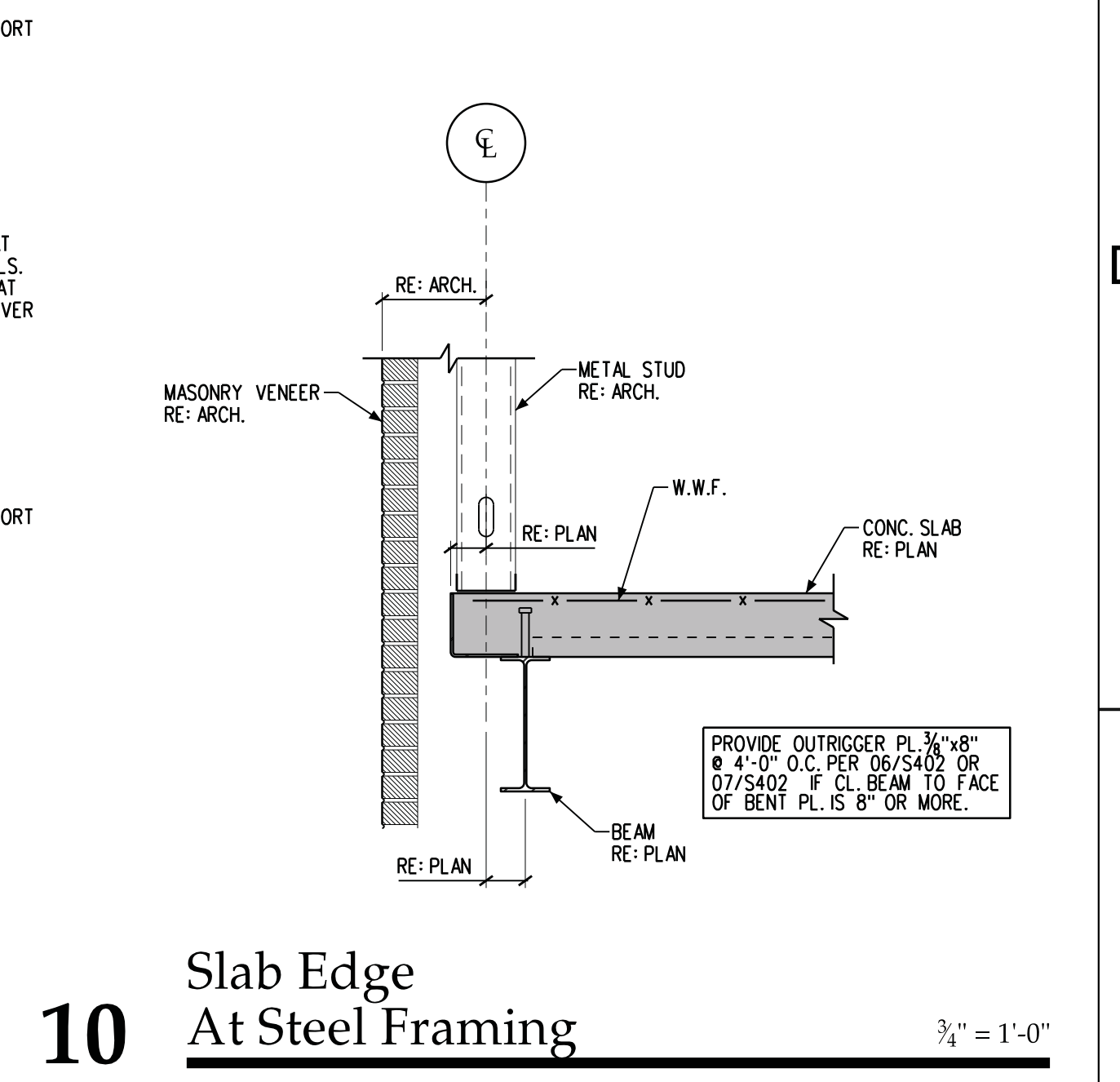
03 Typical Slab Edge At Steel Framing 3/4" = 1'-0"



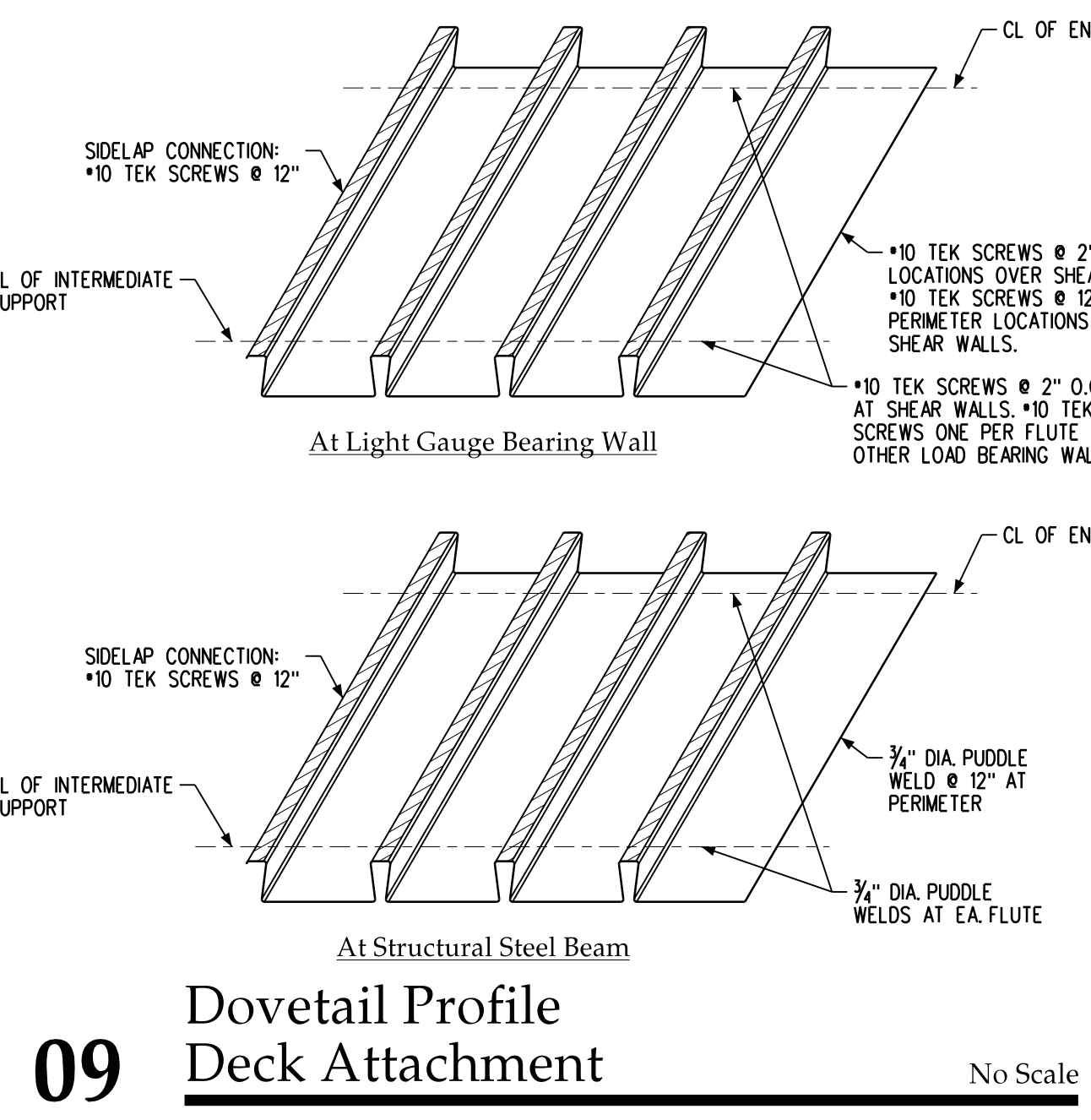
02 Typical Slab Edge At Load Bearing Wall 3/4" = 1'-0"



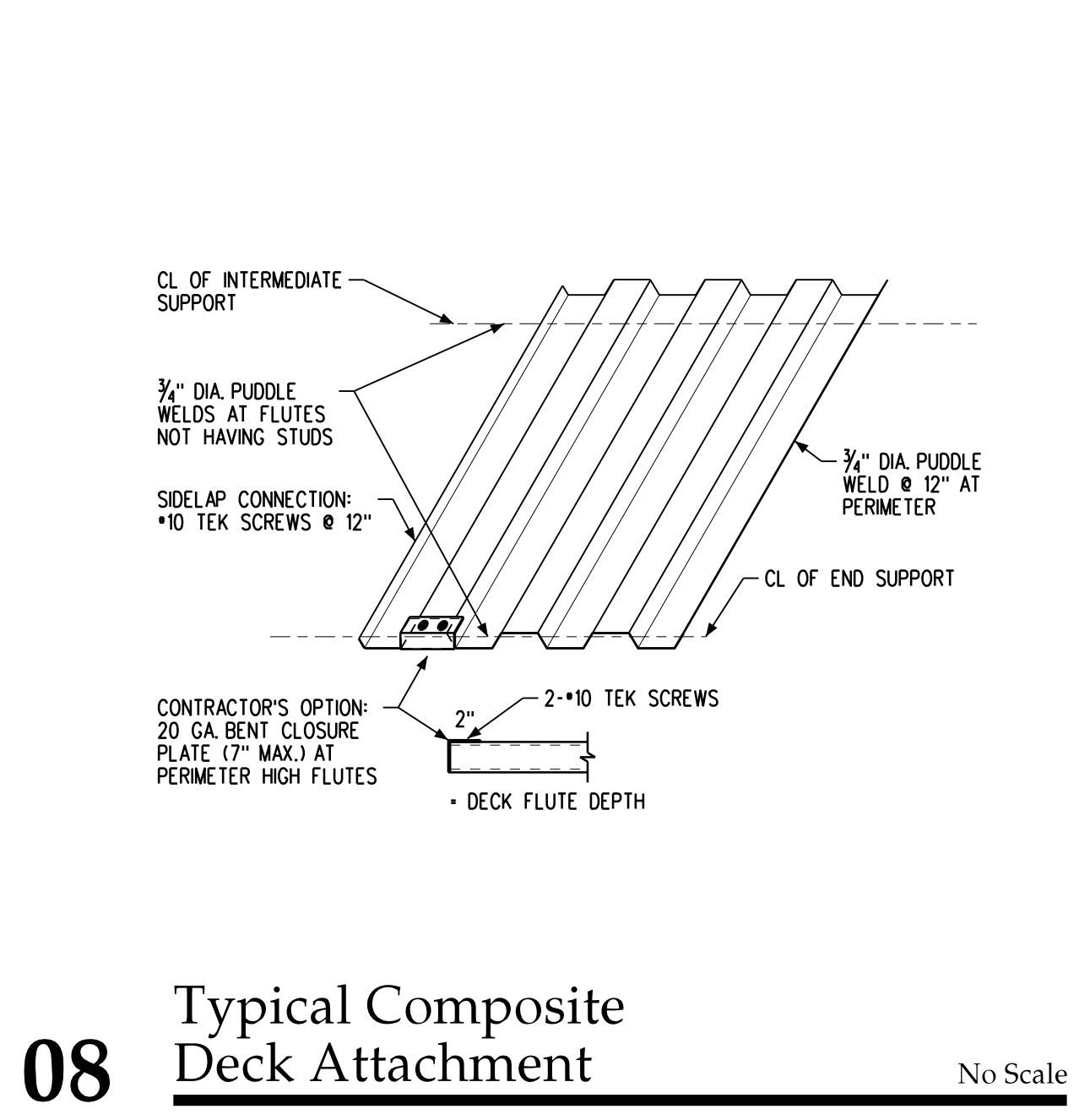
01 Typical Slab Edge At Load Bearing Wall 3/4" = 1'-0"



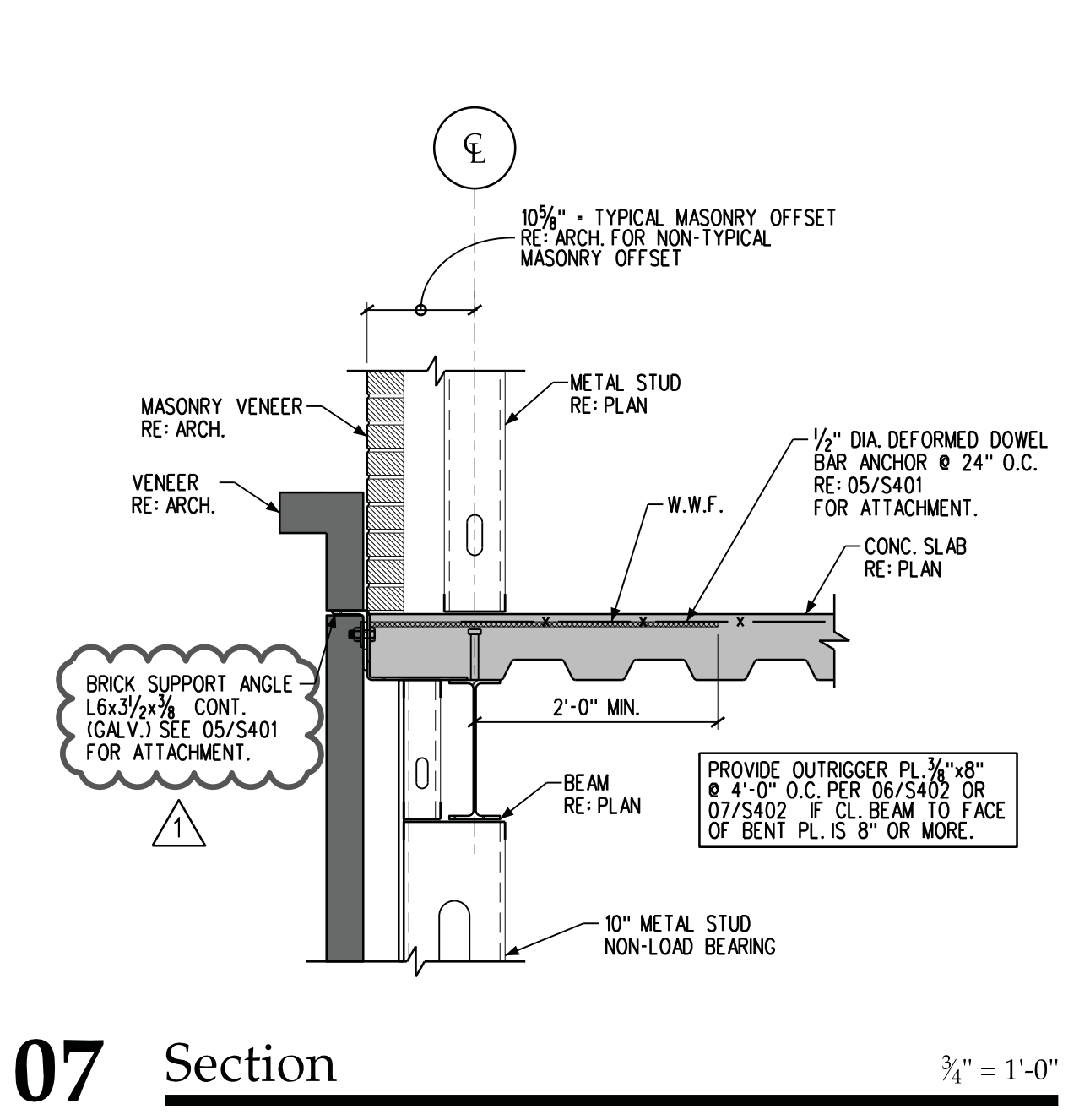
10 Slab Edge At Steel Framing 3/4" = 1'-0"



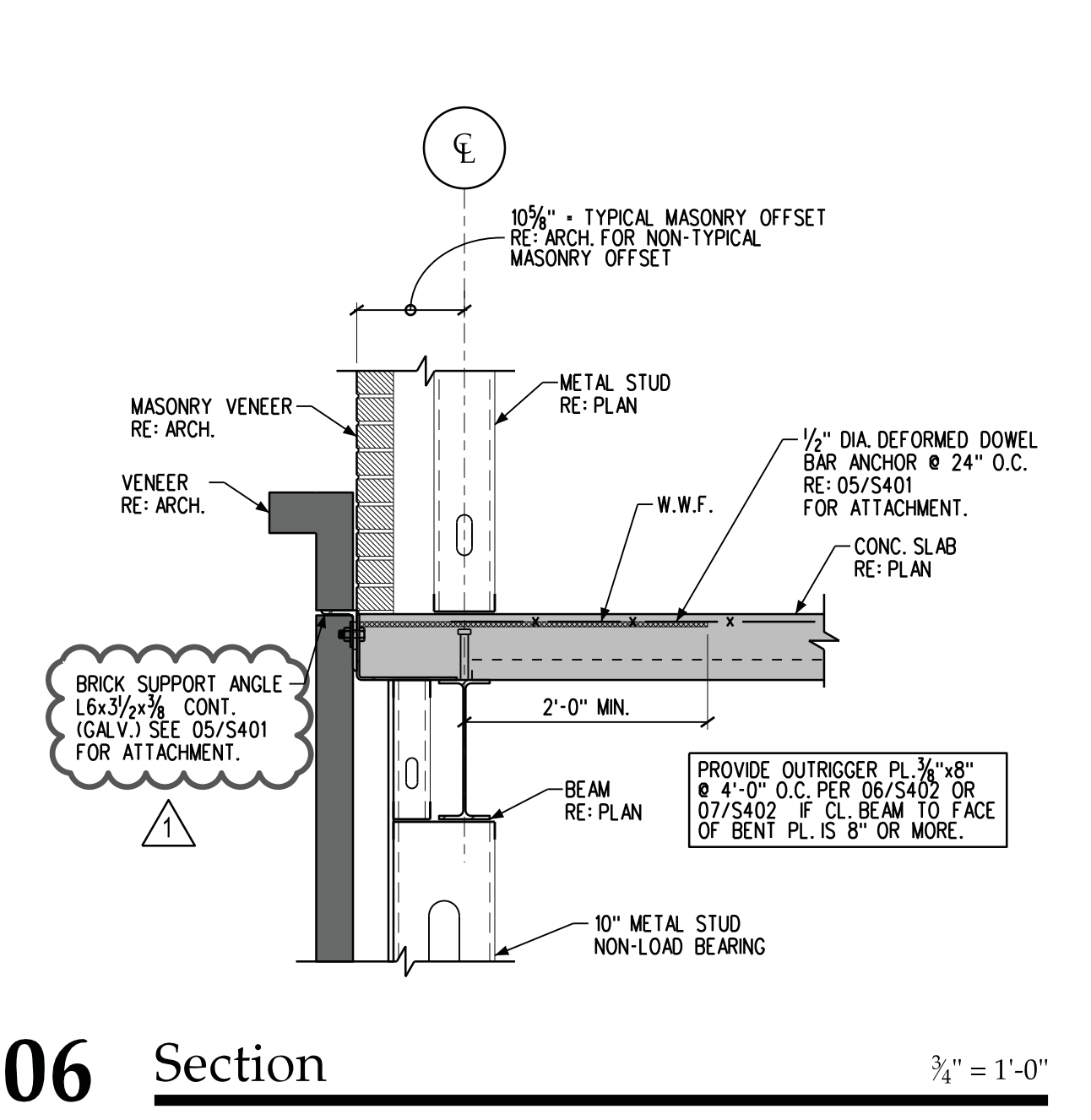
09 Dovetail Profile Deck Attachment No Scale



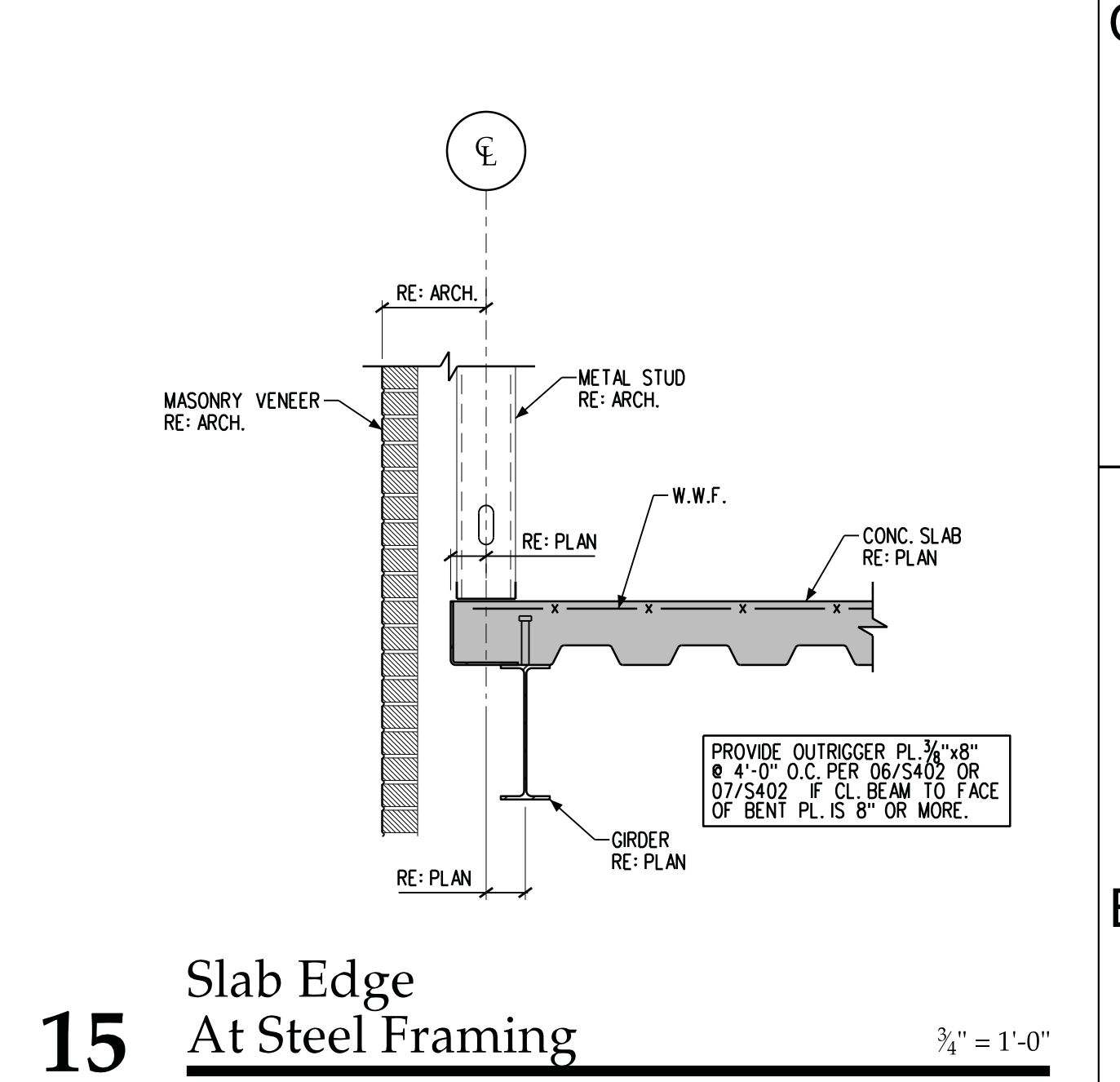
08 Typical Composite Deck Attachment No Scale



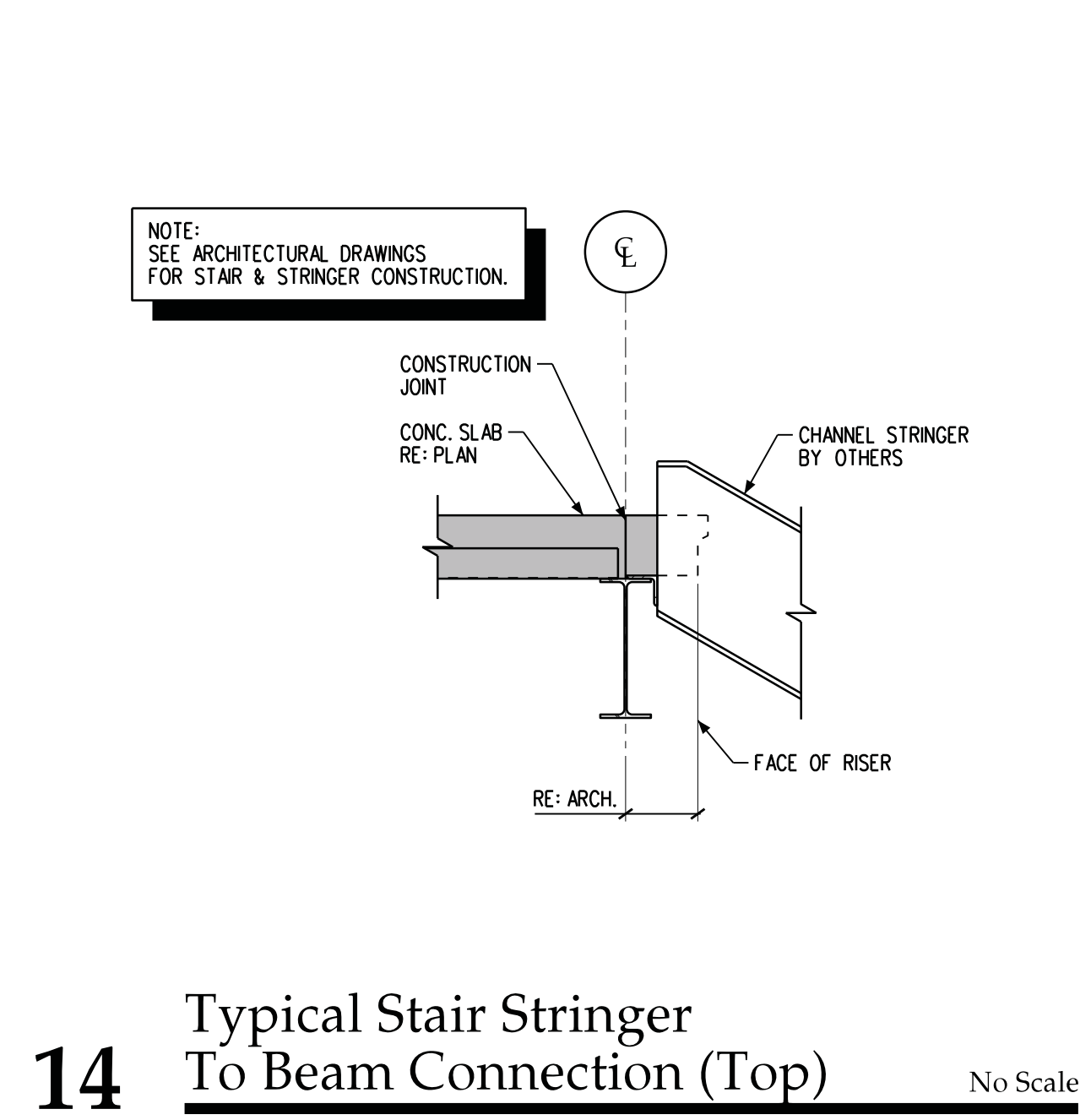
07 Section 3/4" = 1'-0"



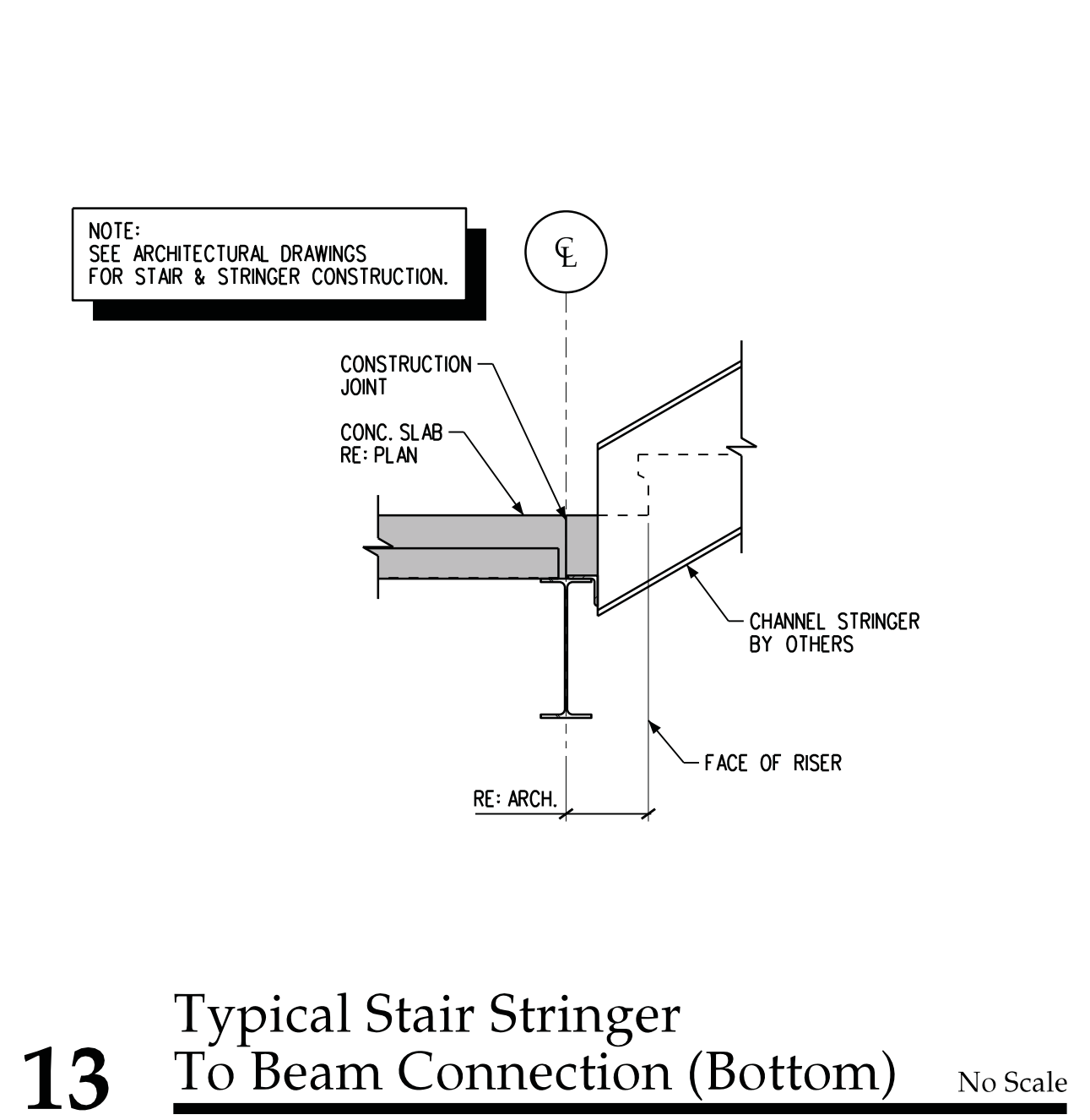
06 Section 3/4" = 1'-0"



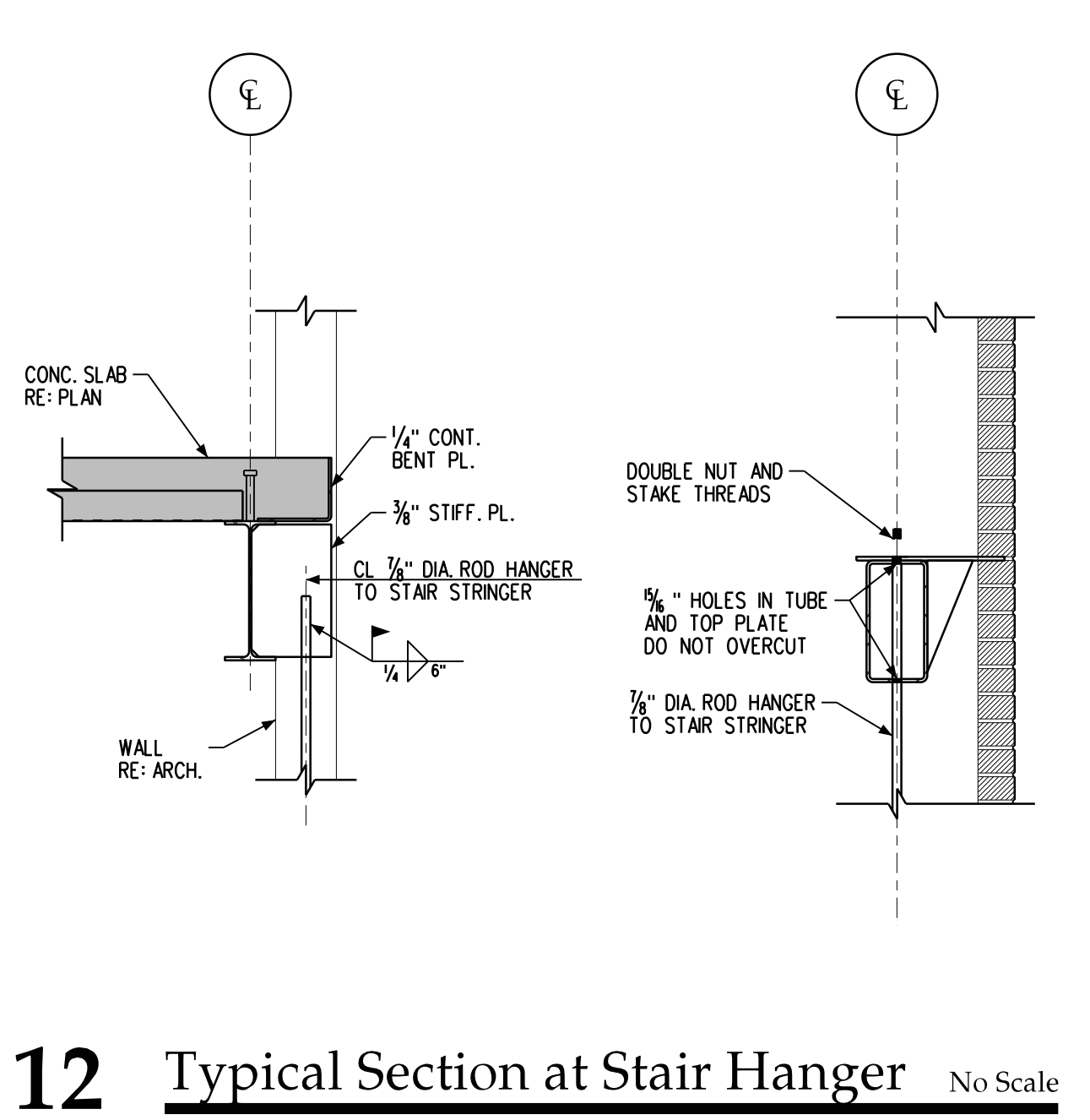
15 Slab Edge At Steel Framing 3/4" = 1'-0"



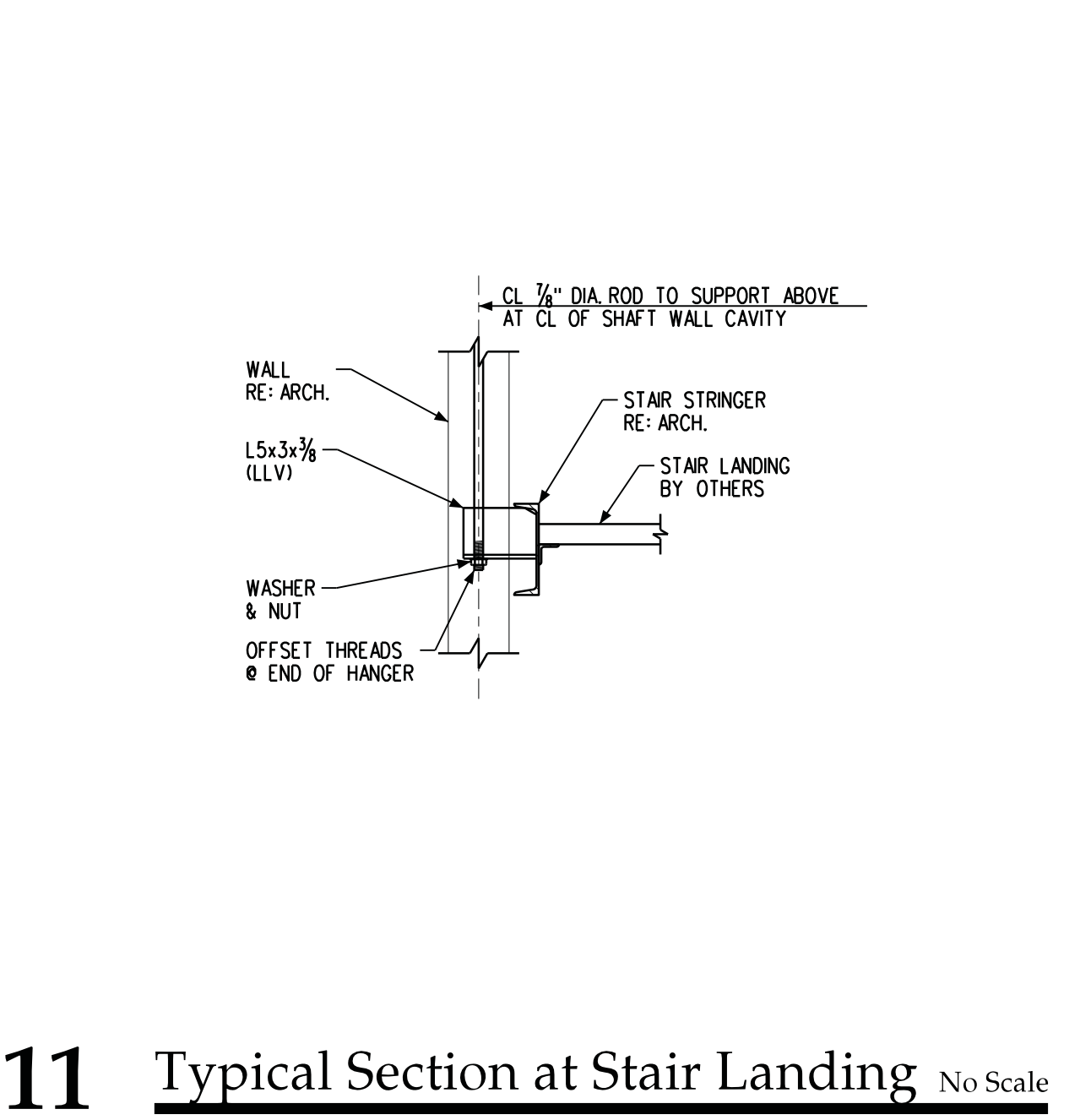
14 Typical Stair Stringer To Beam Connection (Top) No Scale



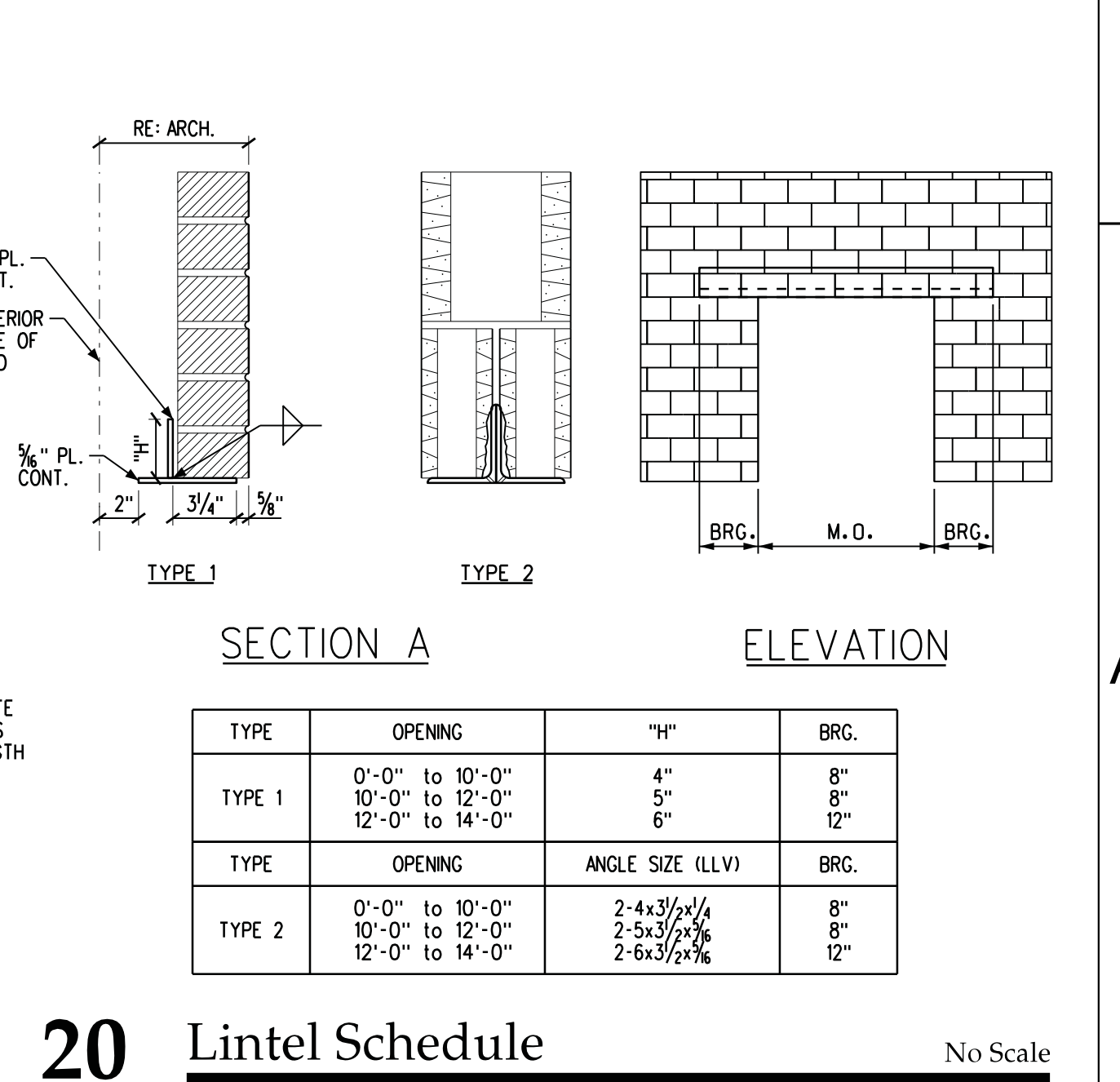
13 Typical Stair Stringer To Beam Connection (Bottom) No Scale



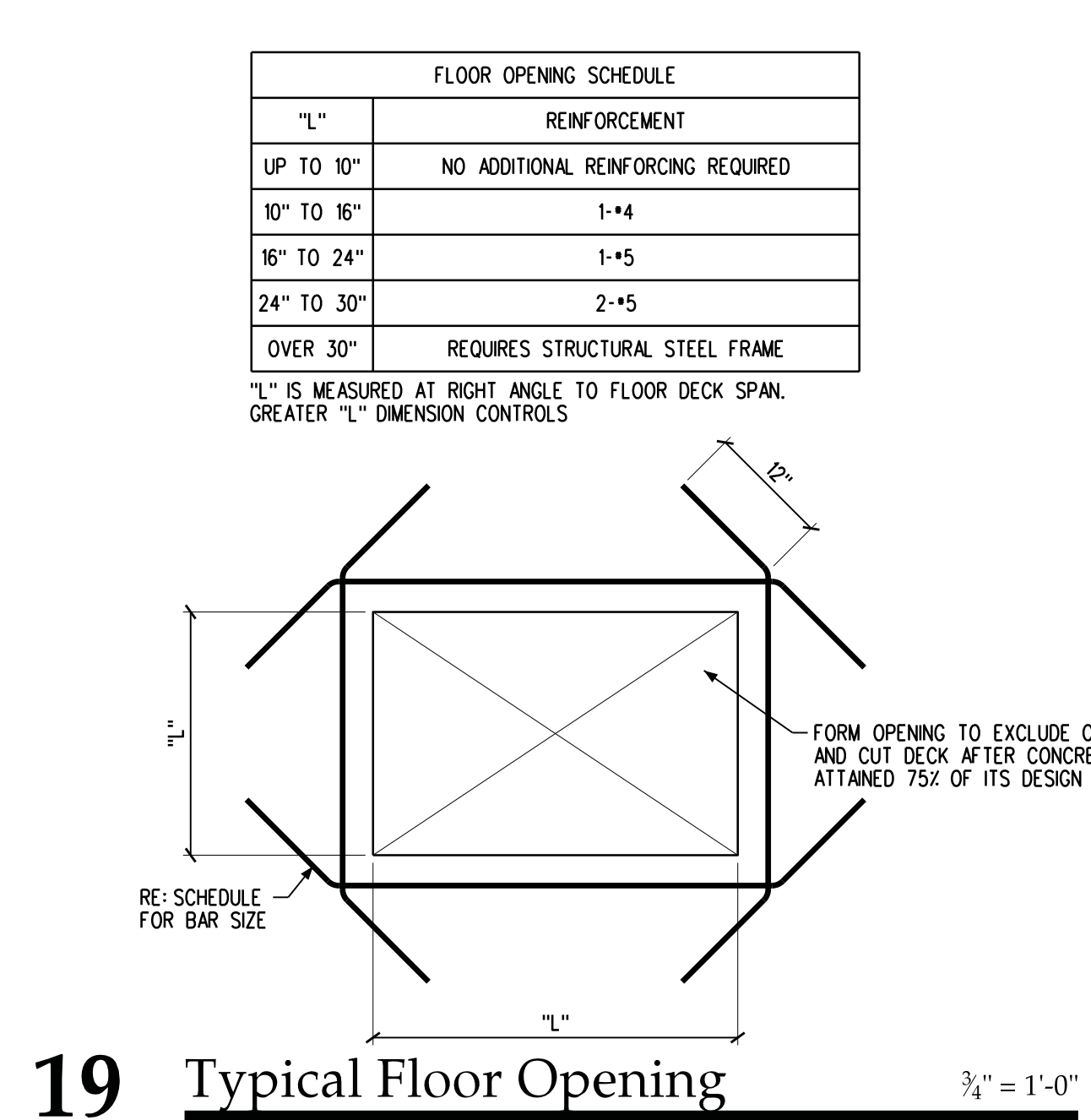
12 Typical Section at Stair Hanger No Scale



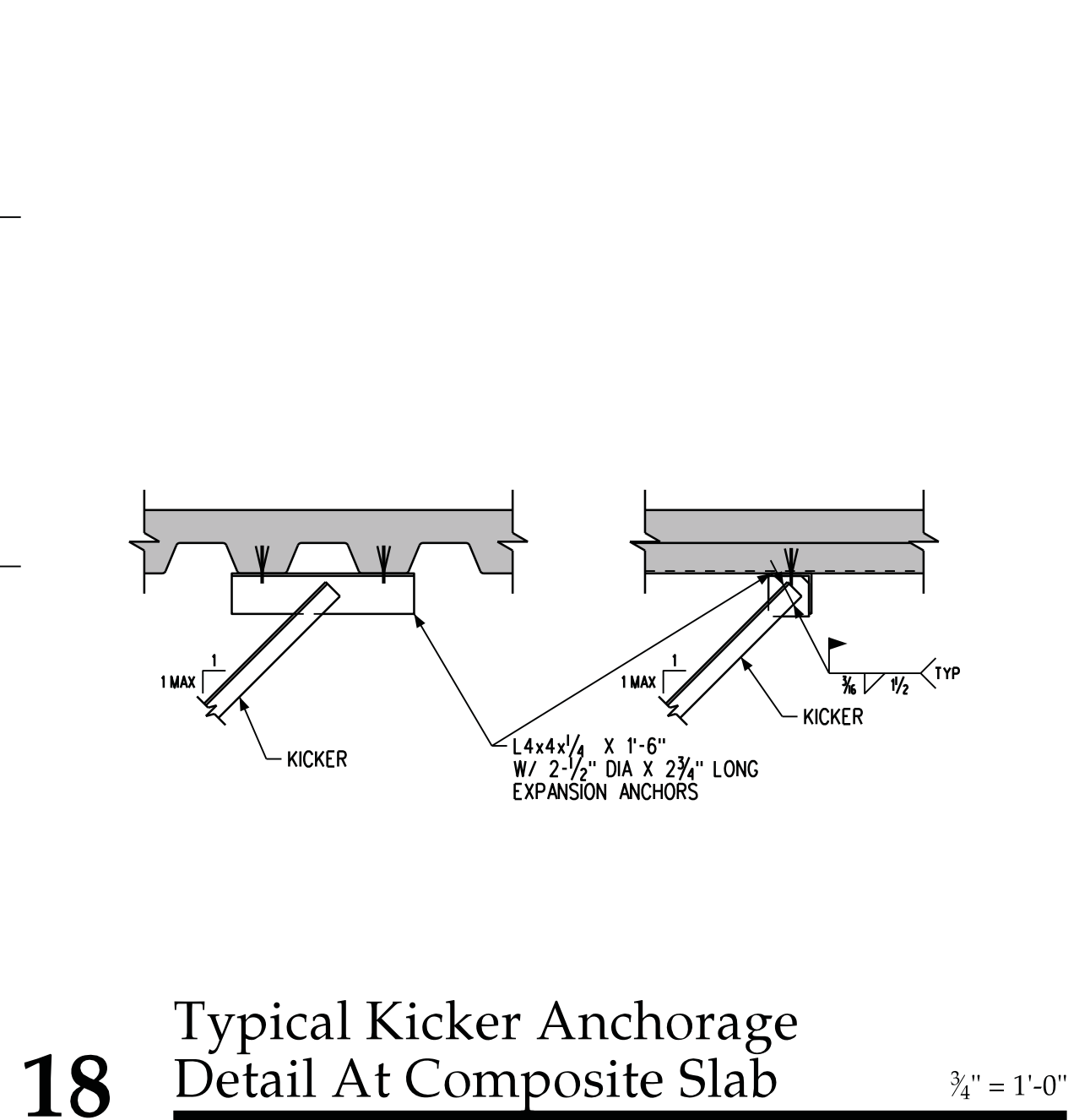
11 Typical Section at Stair Landing No Scale



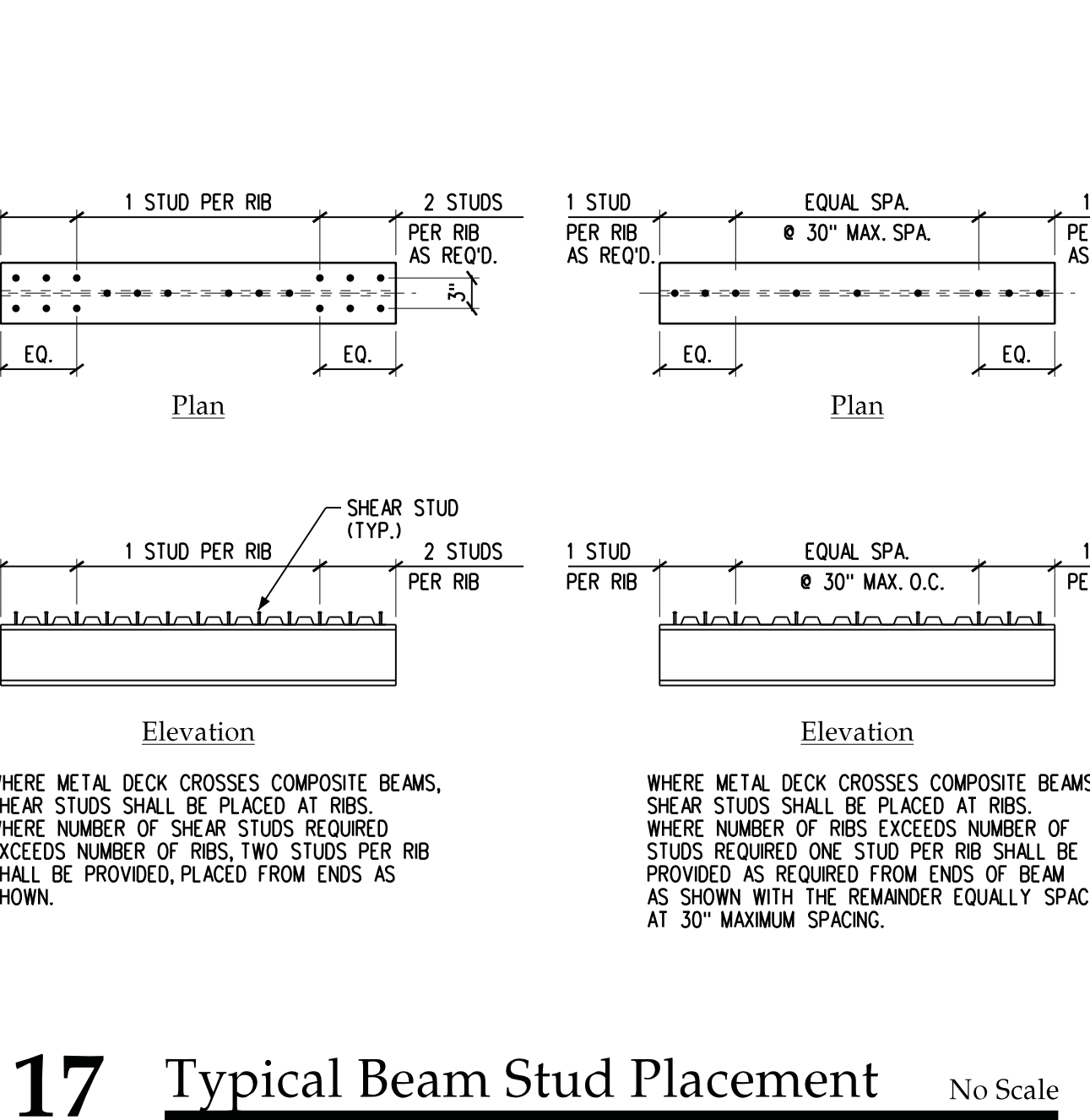
20 Lintel Schedule No Scale



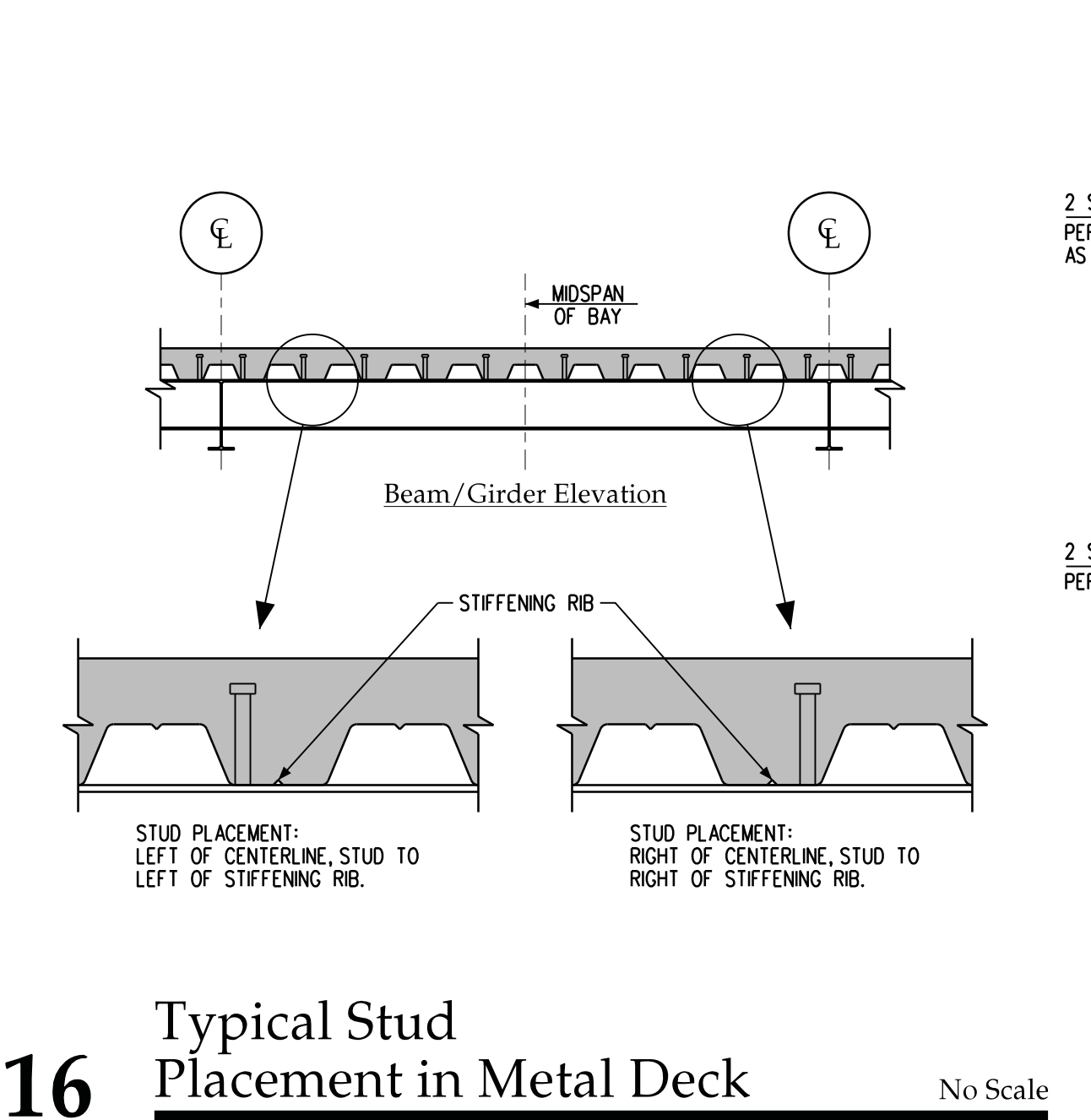
19 Typical Floor Opening 3/4" = 1'-0"



18 Typical Kicker Anchorage Detail At Composite Slab 3/4" = 1'-0"



17 Typical Beam Stud Placement No Scale



16 Typical Stud Placement in Metal Deck No Scale

23-JUN-2015 15:39 \\BS&E02\Projects\2013\2013.23 UNC Phase 4\XACADD Files\ESP\S401.dgn