

ADDENDUM NUMBER: 2 (One)
PROJECT: UNC Charlotte Residence Hall Phase XIV - Early Site Packages

DATE: January 30, 2015
OWNER: UNC Charlotte
ARCHITECT: FWA Group

NOTICE TO BIDDERS:

This addendum is issued prior to receipt of bids, proposals, and its contents do hereby become a part of the pricing documents for the above referenced project.

All subcontractor bidders are responsible for assuring that their subcontractors and vendors are properly apprised of the contents of this Addendum.

All information contained in this Addendum supersedes and takes precedence over any conflicting information in the original pricing documents.

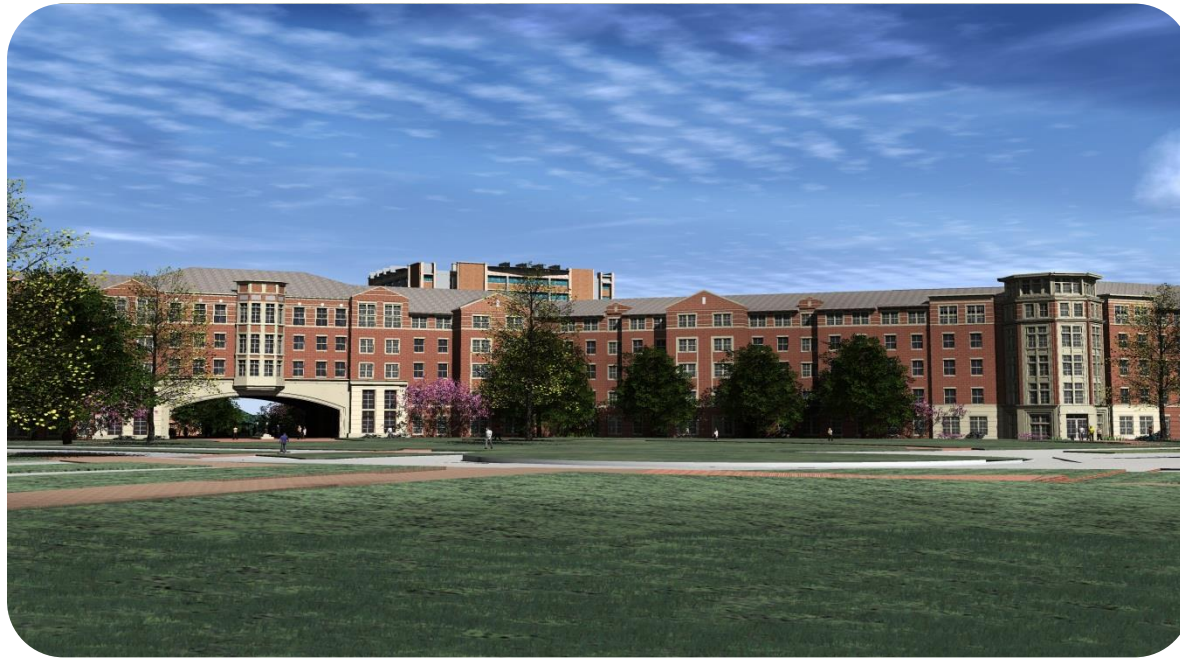
All bidders must acknowledge receipt of this Addendum in the space provided on the Form of Proposal for their bid package.

GENERAL REVISIONS TO BID INFORMATION

- 1 Bid Date, Time, and Location remain the same.
- 2 Pre-Bid Meeting Sign-In Sheet - Attached.
- 3 Pre-Bid Meeting Presentation - Attached.
- 4 Early Site Prequalified Subcontractor List - Attached.

END OF ADDENDUM

Name	Initials	Company	Phone	Email
Butch Yazibrough	ZBY	STARR ELECTRIC	704 565 6611	byazbrough2@starr-electric.net
Jonathan Sexton	JS	Falconer Construction	919 821 3295	jsexton@falconerconstruction.com
DAVE BREELE	DB	Southern Pan Structures	704-622-5799	DAVID.B@SOUTHERNPAN.COM
Kenna Brown	KB	MARTINEZ Co	919 724 7611	Louis 342 E BallSouth MIT
GARY BRENDLE	GLB	SITENWORKS	980-722-2104	GORENDOLE@SITENWORKS-LLC.COM
GARY McCORPHE	GM	WATSON ELECT CONST	704-393-0920	gmcorspie@watsonelec.com
Mike Wise	MW	Christopher Bryan	704-552-1860	mike.wise@christopherbryancompany.com
Juliana Ballard	JB	Eastern Industrial	704-302-6907	juliana.ballard@easternfirst.com
Chad Evans	CWE	IKES Construction	704 785 2139	Brian@IKESConstruction.com
KENDAL McATEER	KPM	BSDE	704-333-3122	kmcateer@bullasmith.com
Jim PALMIERI	JP	FWS	704.995.4020	j.palmieri@fwagroup.com
John Taylor	JT	Rodgers	704 913 1222	john.taylor@rodgersbuilders.com
JEFF Collespe		Rodgers		
Josh Schlechty		Rodgers		
COLIN O'BRIEN	CO	Stowalter	704.926.7176	ColinOBrien@stowalterconstruction.com
Brian Kugler	BK	UNC Charlotte	704 687 0522	bkugler@unc.edu
Donny Edwards	DE	UNC Charlotte	704-687-5020	d.edwards@unc.edu
Randy Thomas	RT	Triangle Grading & Paving	336-516-3949	rthomas@trianglegradingpaving.com
JESSE SOSSAMON	JS	EXCEL ELECTRICAL	704.795.0060	JESSE.SOSSAMON@EXCELELECTRICAL.COM
MARVIN REYES	M-R	STARLIGHT PAINTING	704-453-1441	MARVIN.REYES@STARLIGHTPAINTINGNC.COM
STEVE PRIMM	SP	GRANITE CONTRACTING	(704) 634-1966	STEVEPRIMM@GRANITECONTRACTING.COM
CARY RHODES	CR	Camps Construction	(704) 609-9736	crhodes@campconstruction.com
Kevin Orr	KO	Camps Construction	541 602-9520	KOrr@campconstruction.com
John Neilson	JN	UNC Charlotte	704 687-0524	JNeilson@unc.edu



**UNC Charlotte
Residence Hall Phase XIV – Early Site**

**Prebid Meeting
January 28, 2015**

RODGERS
Our Passion is Building®

Introduction of Team Members

Owner: UNC Charlotte

- Phil Jones, P.E. – Associate Vice Chancellor
- John Neilson – Associate Director Capital Construction
- Brian Kugler, Project Manager
- Dorothy Vick, HUB Coordinator

Design Team: The FWA Group

- Jim Palmeiri, AIA – Project Architect

Optima Engineering

- Ron Almond, P.E.,

Bulla Smith Design Engineering

- Jeff Smith, P.E.
- William Bulla III, P.E.

Construction Manager: Rodgers

- Eric Reichard, OIC
- John Taylor, Construction Manager
- Jason Money, Preconstruction
- James Clayton, HUB Program Manager



Project Overview

- The new facility is approximately 145,000 square foot facility consisting of 425 beds in suite configuration. The residence hall will also include meeting, laundry and multi-purpose rooms on each level. The building exterior will utilize brick and pre-cast concrete as is typical for this campus.
- Project located in the area of MSU Lot and Sanford Hall in South Village.
- Construction Manager at Risk delivery method
- Located at the UNCC Main Campus, Charlotte, NC
- \$38,500,000 Total Construction Budget

Project Scope – Early Site Bid Packages

Early Site Packages:

- 02A Sitework
- 02H Site Electrical
- 03C Complete Concrete Structures
- 05A Steel Structures

Project Scope – Early Site Bid Schedule

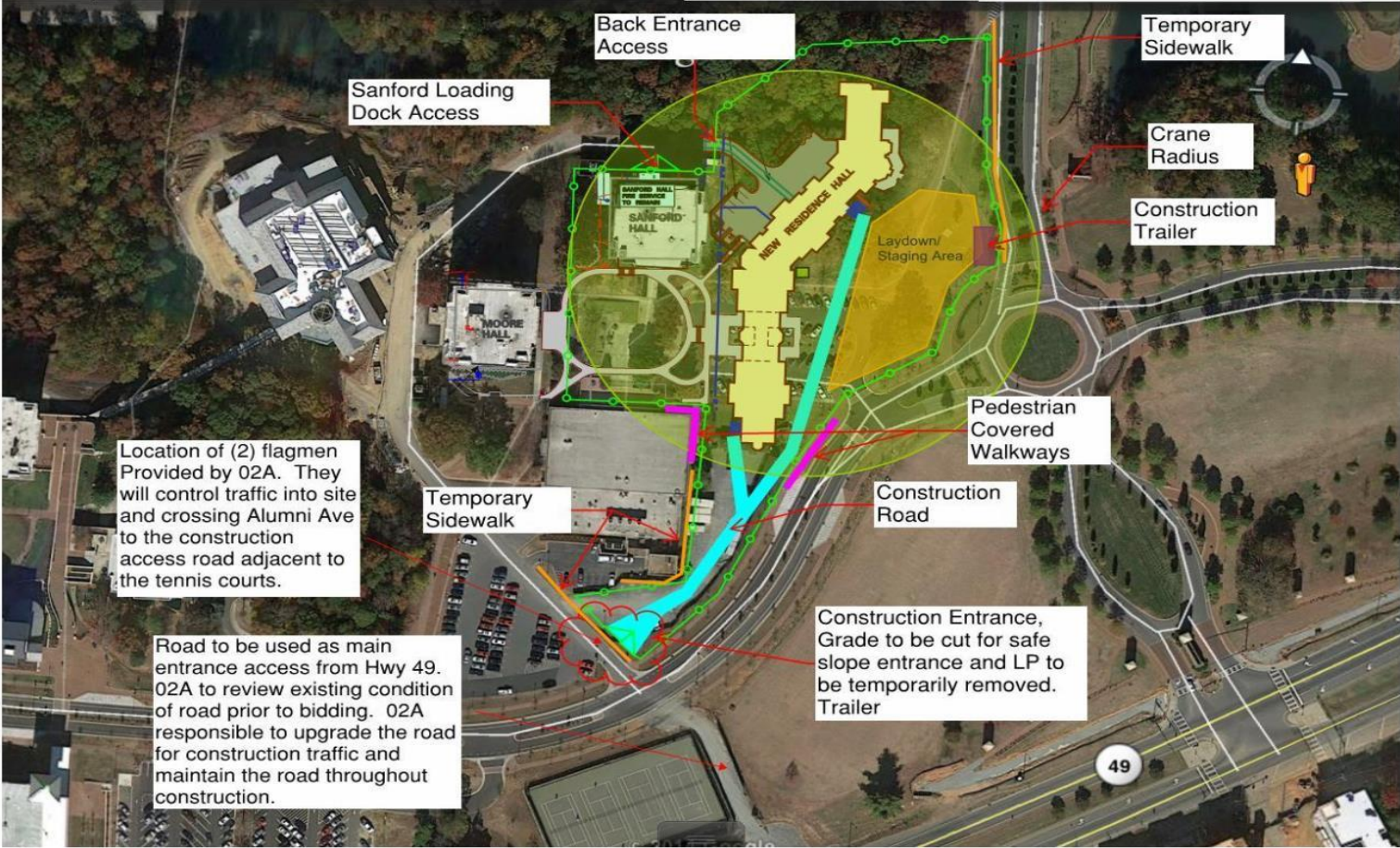
- Project Info/Outreach Session Completed
- Prequalification Due Date Completed
- Project Bid Date February 12, 2015
2:00PM
Location: Cone Center
Room 208
- Request For Information Deadline February 2, 2015
5:00PM
- Construction Start Date March 2015
- Completion Date June 2016

Project Scope – Site Logistics



Project Scope – Site Logistics

Phase 14 Site Logistics



Project Scope – Bid Documents

Pricing Documents

- Bid Package Manual
 - General Summary of Work
 - Specific Summary of Work
 - Form of Proposal
- Construction Plans

Rodgers Online Plan Room

- Pricing Documents will be available via online plan room
- Accessing planroom
 - Go to www.rodgersbuilders.com
 - Click the “Plan Room” link

Bid Package Manual - Form of Proposal

- Only accepting bids on the Bid Package Manual Form of Proposal
- Sealed originals (no faxes or emails)
- Lump sum base bid
- Alternates as affecting scope of work
 - No price entered on FOP = \$0.00
- Unit prices
- Acknowledge all addenda
- No alterations, exclusions, or clarifications
- Round base bid and alternates to whole numbers

HUB Participation

- Rodgers strongly encourages 1st Tier Contractors to use certified HUB contractors and suppliers.
- 30% Minimum HUB Participation at 1st Tier Level
- \$500,000 Payment & Performance Bond Threshold – Unless part of Bldg. Envelope
- \$500,000 Bid Bond Threshold – Unless part of Bldg. Envelope
- State Construction Guidelines for Recruitment and Selection of Minority Businesses for Participation in State Construction Contracts – In Accordance with G.S. 143-128.2
 - Guidelines can be accessed at <http://www.nc-sco/documents/guidelines/MBGuidelines2002R.pdf>

Obtaining Minority Business Participation Forms

- Rodgers Bid Package Manual
- UNC Charlotte Facilities Website (<http://facilities.uncc.edu/advertisements>)
- State Construction Office Website (<http://www.nc-sco.com/default.aspx>)
- Office for Historically Underutilized Businesses (<http://www.doa.nc.gov/hub/legislation.aspx#Forms>)

Questions & Answers

Q&A

Thank You

UNC Charlotte, Residence Hall Phase XIV

(Early Site package)

Subcontractors	Bid Packages
Pedulla Trucking	02A Sitework
Blythe Development	02A Sitework
Showalter	02A Sitework
Mid-Atlantic Infrastructure, Inc.	02A Sitework
Ike's Construction, Inc.	02A Sitework
Faulconer Construction Company	02A Sitework
Siteworks	02A Sitework
Granite	02A Sitework
Starr Electric	02H Site Electrical
Excel Electrical	02H Site Electrical
Watson Electrical Construction Co	02H Site Electrical
Watson Electric Co	02H Site Electrical
Lake Electric Co	02H Site Electrical
Camps Construction	03C Complete concrete structures
Martinez Company	03C Complete concrete structures
Procon, Inc.	03C Complete concrete structures
Christopher Bryan Company, Inc	03C Complete concrete structures
Briegan Concrete Constructors	03C Complete concrete structures
Southern Pan Services Company	03C Complete concrete structures
SteelFab	05A Steel Structures
Structural Steel of Carolina, LLC	05A Steel Structures
North State Steel	05A Steel Structures
SMI-Owen Steel Company, Inc	05A Steel Structures
Lyndon Steel	05A Steel Structures