

University of North Carolina at Charlotte

Student Counseling Center
Mandatory Pre-Bid Meeting

June 2, 2016



Introduction

UNC Charlotte –

Project Manager: Donia Schauble

Construction Manager: Jennifer Price

HUB Coordinator: Dorothy Vick

Architecture –

EYP/: Mark Sealy, Stephanie McArthur, Abigail Turner

Civil –

LandDesign: Marc Momsen

Structural –

Bulla Smith Design Engineering: Tripp Bulla

M/E/P/FP –

RMF Engineering: Avery Monroe

Commissioning –

McCracken & Lopez:

Project Conditions

/ Project Conditions

State Construction Project

Bid Document Availability

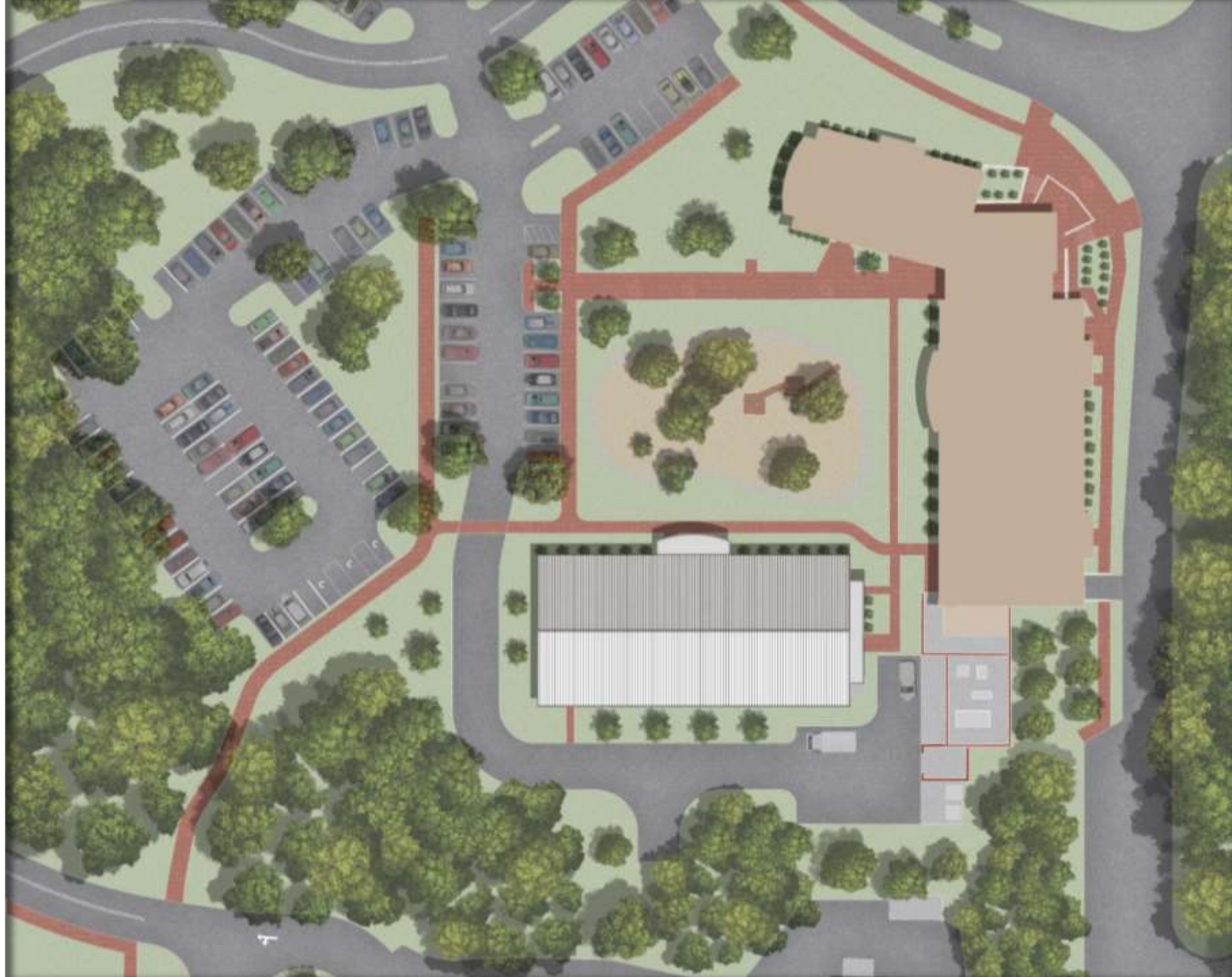
Bid Opening- June 16

Schedule-(334 days per contract)

Liquidated Damages

Work Restrictions

No LEED or Green Globe Requirements



Minority Business Participation

The Minority Participation Goal for this project is 15% or better

Assistance:

Email the UNC Charlotte HUB Coordinator, Dorothy Vick (704-687-0527), ***no later than 12:00 PM Friday, June 3, 2016*** at dlvick@uncc.edu (***Email Subject: Student Counseling Center***) for the following;

- 1. Assistance in finding certified minority firms who have worked on UNC Charlotte projects and who can perform the scopes of work (site work, concrete, electrical, etc.) you are seeking, and/or*
- 2. A list of minority trade, community or contractor organizations identified by the Office for Historically Underutilized Businesses that provide assistance in recruitment of minority businesses.*

Project Overview

/ Summary - Overview

Site

Connecting Utilities

Minor Demolition

1 Story Building

11,000 Square Feet

Steel Structure

Light-Gauge with Bar Joist

Brick Veneer

Aluminum Storefront

Standing Seam Metal Roof



/ Summary - Overview

Site

Connecting Utilities

Minor Demolition

1 Story Building

11,000 Square Feet

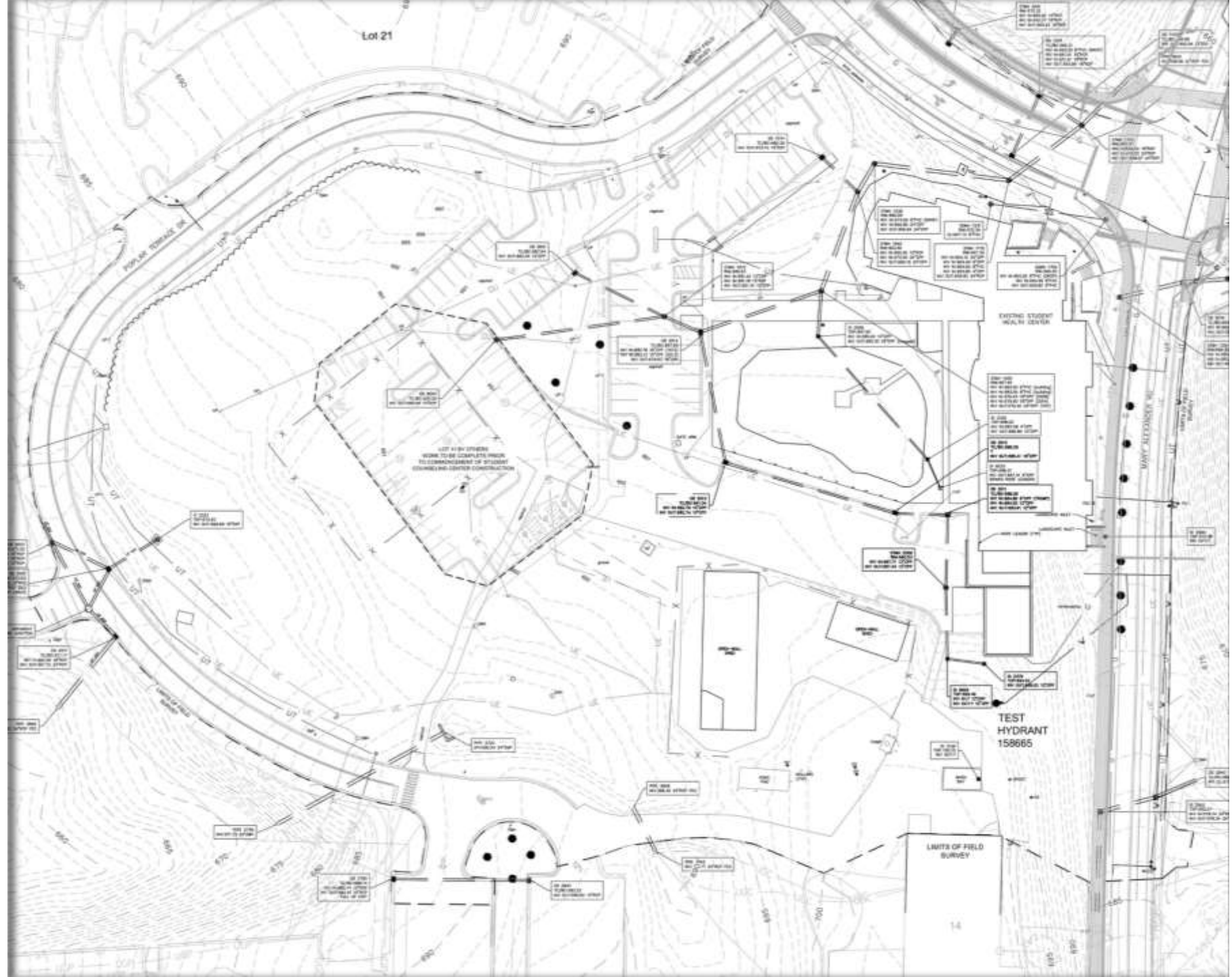
Steel Structure

Light-Gauge with Bar Joist

Brick Veneer

Aluminum Storefront

Standing Seam Metal Roof



/ Summary - Overview

Site

Connecting Utilities

Minor Demolition

1 Story Building

11,000 Square Feet

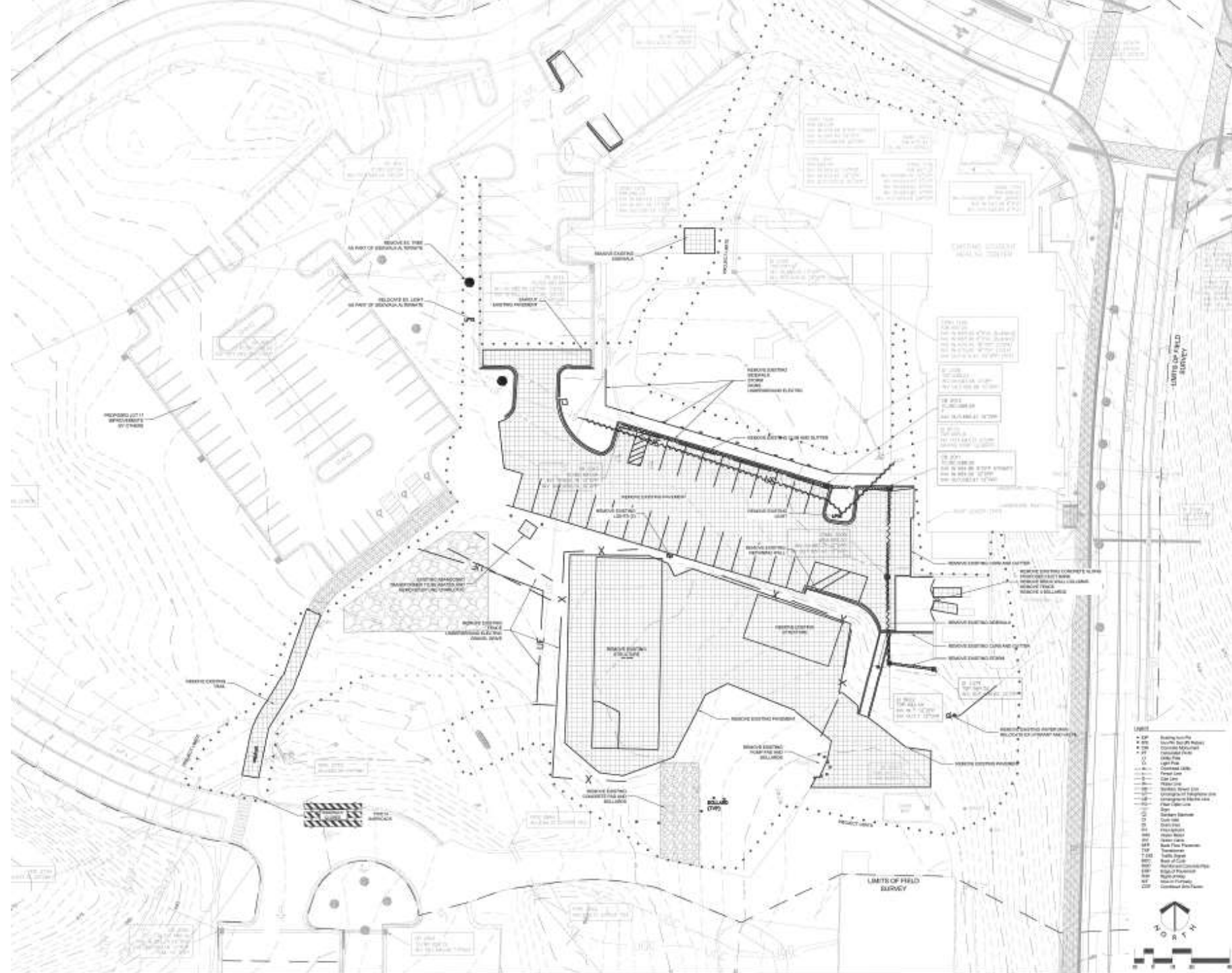
Steel Structure

Light-Gauge with Bar Joist

Brick Veneer

Aluminum Storefront

Standing Seam Metal Roof



/ Summary - Overview

Site

Connecting Utilities

Minor Demolition

1 Story Building

11,000 Square Feet

Steel Structure

Light-Gauge with Bar Joist

Brick Veneer

Aluminum Storefront

Standing Seam Metal Roof



/ Summary - Overview

Site

Connecting Utilities

Minor Demolition

1 Story Building

11,000 Square Feet

Steel Structure

Light-Gauge with Bar Joist

Brick Veneer

Aluminum Storefront

Standing Seam Metal Roof



/ Summary - Overview

Site

Connecting Utilities

Minor Demolition

1 Story Building

11,000 Square Feet

Steel Structure

Light-Gauge with Bar Joist

Brick Veneer

Aluminum Storefront

Standing Seam Metal Roof



/ Summary - Overview

Site

Connecting Utilities

Minor Demolition

1 Story Building

11,000 Square Feet

Steel Structure

Light-Gauge with Bar Joist

Brick Veneer

Aluminum Storefront

Standing Seam Metal Roof



/ Summary - Overview

Site

Connecting Utilities

Minor Demolition

1 Story Building

11,000 Square Feet

Steel Structure

Light-Gauge with Bar Joist

Brick Veneer

Aluminum Storefront

Standing Seam Metal Roof



/ Summary - Overview

Site

Connecting Utilities

Minor Demolition

1 Story Building

11,000 Square Feet

Steel Structure

Light-Gauge with Bar Joist

Brick Veneer

Aluminum Storefront

Standing Seam Metal Roof



/ Summary - Overview

Site

Connecting Utilities

Minor Demolition

1 Story Building

11,000 Square Feet

Steel Structure

Light-Gauge with Bar Joist

Brick Veneer

Aluminum Storefront

Standing Seam Metal Roof



Division 01

/ Division 01

Temporary Facilities

Utilities

Parking/Storage

Shipping Instructions

Decorum

Project Schedule (CPM)

Alternates

Unit Prices

Substitutions

Addendum – June 9!

Delegated Design

Commissioning



Dates to Remember

Dates to Remember:

June 6, 2016: Final questions, comments and clarification requests are due via email to EYP (smcarthur@eypae.com).

June 9, 2016: Final Addendum will be released.

June 16, 2016: Bid opening at 2:00 PM – 112B Cone University Center

Pre-Bid Site Visit - directly follow the Proprietary Alternate Meeting.
Anyone wishing to return at a later date must schedule an appointment with the University.

Proprietary Alternates

/ Proprietary Alternates

- A. Fire Alarm System: Simplex-Grinnell.
- B. Door hardware: Locksets/Interior Cylinders/Exterior Cylinders by Schlage of Ingersoll Rand, Closers by LCN of Ingersoll Rand, Card Reader System by Open Options Access Control, and Exit Devices by Von Duprin of Ingersoll Rand.
- C. Unit Paver: Pine Hall Brick, English Edge Pavers.